

UNITED STATES
DEPARTMENT OF THE INTERIOR
BUREAU OF LAND MANAGEMENT

30-045-28727

APPLICATION FOR PERMIT TO DRILL, DEEPEN, OR PLUG BACK

1a. TYPE OF WORK

DRILL ☒

DEEPEN ☐

PLUG BACK ☐

b. TYPE OF WELL

OIL
WELL ☐

GAS
WELL ☒

OTHER ☐

SINGLE
ZONE ☒

MULTIPLE
ZONE ☐

2. NAME OF OPERATOR

SG Interests I, Ltd.

3. ADDRESS OF OPERATOR

P.O. Box 421, Blanco, NM 87412-0421

4. LOCATION OF WELL (Report location clearly and in accordance with any State requirements.)*
At surface

1325' FNL, 1445' FEL

At proposed prod. zone

same

14. DISTANCE IN MILES AND DIRECTION FROM NEAREST TOWN OR POST OFFICE*

Approximately 2 miles southeast of Blanco

15. DISTANCE FROM PROPOSED*

LOCATION TO NEAREST
PROPERTY OR LEASE LINE, FT.
(Also to nearest drig. unit line, if any)

1246'

18. DISTANCE FROM PROPOSED LOCATION*

TO NEAREST WELL, DRILLING, COMPLETED,
OR APPLIED FOR, ON THIS LEASE, FT.

400'

16. NO. OF ACRES IN LEASE

944.77

19. PROPOSED DEPTH

2350'

17. NO. OF ACRES ASSIGNED
TO THIS WELL

312.8

20. ROTARY OR CABLE TOOLS

Rotary

21. ELEVATIONS (Show whether DF, RT, GR, etc.)
5688' GGL, 5700' KB

22. APPROX. DATE WORK WILL START*

July 30, 1992

23. PROPOSED CASING AND CEMENTING PROGRAM

SIZE OF HOLE	SIZE OF CASING	WEIGHT PER FOOT	SETTING DEPTH	QUANTITY OF CEMENT
12-1/4"	8-5/8"	24#, J-55	250'	200 sx Class B w/2% CaCl ₂
7-7/8"	5-1/2"	15.5#, J-55	2350'	250 sx 65/35 Pozmix w/6% gel
				100 sx Class B w/2% CaCl ₂ tail

SG Interests I, Ltd., is proposing to drill a vertical well to develop the Basin Fruitland Coal formation at the above described site in accordance with the drilling and surface use programs attached to this application.

BLM road right-of-way is not being applied for as the only off lease access needed to get to the location is provided by an existing county road.

RECEIVED

JUL 28 1992

OIL CON. DIV.

DIST. 3

IN ABOVE SPACE DESCRIBE PROPOSED PROGRAM: If proposal is to plug back, give data on present productive zone and proposed new productive zone. If proposal is to drill or deepen directionally, give pertinent data on subsurface locations and measured and true vertical depths. Give blowout preventer program, if any.

24.

SIGNED

[Signature]

TITLE

Agent for SG Interests I, Ltd.

DATE

6/24/92

(This space for Federal or State office use)

PERMIT NO.

APPROVAL DATE

APPROVED
AS AMENDED

APPROVED BY

TITLE

CONDITIONS OF APPROVAL, IF ANY:

NMOOD

*See Instructions On Reverse Side

DATE 2-3-1992
[Signature]
AREA MANAGER

Submit to Appropriate
District Office
State Lease - 4 copies
Fee Lease - 3 copies

State of New Mexico
Energy, Minerals and Natural Resources Department

Form C-102
Revised 1-1-89

OIL CONSERVATION DIVISION

P.O. Box 2088
Santa Fe, New Mexico 87504-2088

RECEIVED
BLM

DISTRICT I
P.O. Box 1980, Hobbs, NM 88240

DISTRICT II
P.O. Drawer DD, Artesia, NM 88210

DISTRICT III
1000 Rio Brazos Rd., Aztec, NM 87410

WELL LOCATION AND ACREAGE DEDICATION PLAT

All Distances must be from the outer boundaries of the section

92 JUN 25 PM 1:09

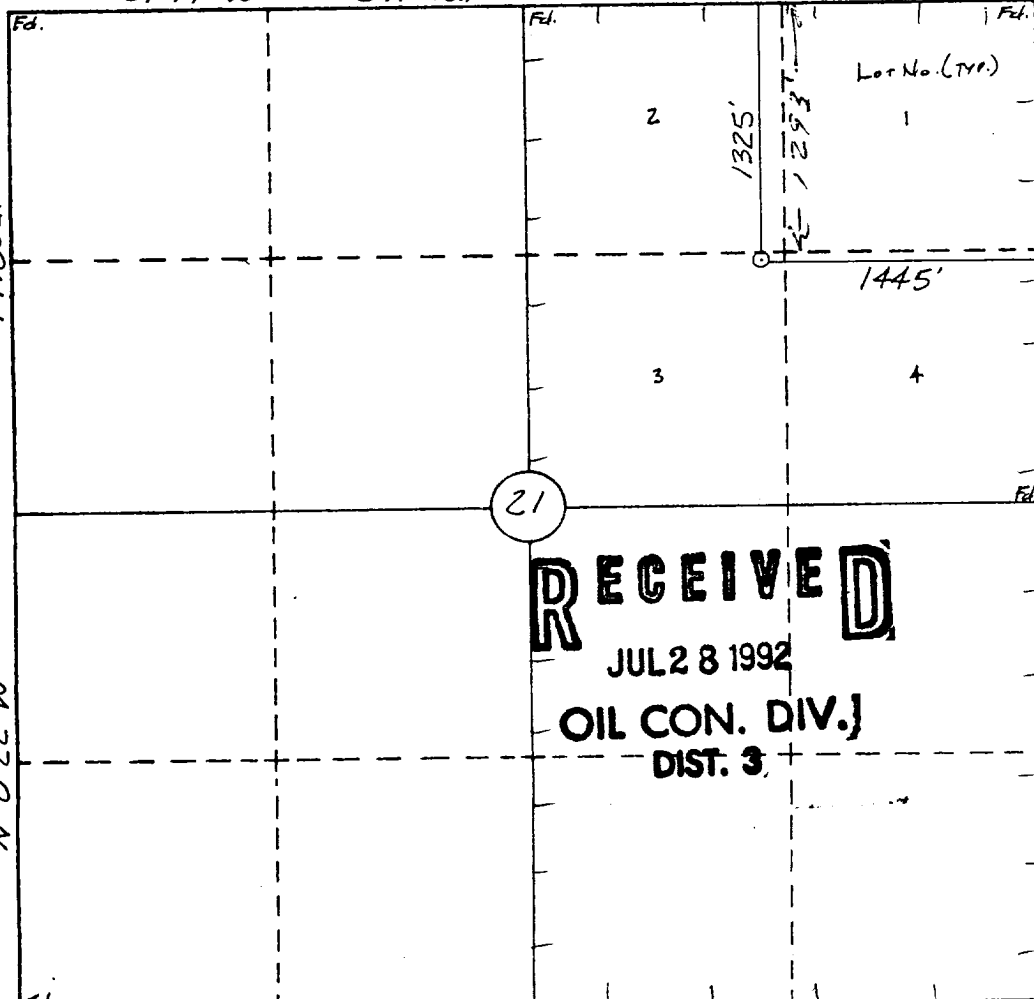
019 FARMINGTON, N.M.

Operator S G INTERESTS I, LTD.		Lease FEDERAL 29-9-21		Well No. 1
Unit Letter G	Section 21	Township 29 N	Range 9 W	County San Juan
Actual Footage Location of Well: 1325 feet from the North line and 1445 feet from the East line				
Ground level Elev. 5688	Producing Formation Fruitland Coal	Pool Basin Fruitland	Dedicated Acreage: 312.8 Acres	

1. Outline the acreage dedicated to the subject well by colored pencil or hatchure marks on the plat below.
2. If more than one lease is dedicated to the well, outline each and identify the ownership thereof (both as to working interest and royalty).
3. If more than one lease of different ownership is dedicated to the well, have the interest of all owners been consolidated by communitization, unitization, force-pooling, etc.?
☐ Yes ☐ No If answer is "yes" type of consolidation _____
If answer is "no" list the owners and tract descriptions which have actually been consolidated. (Use reverse side of this form if necessary.) _____
No allowable will be assigned to the well until all interests have been consolidated (by communitization, unitization, forced-pooling, or otherwise) or until a non-standard unit, eliminating such interest, has been approved by the Division.

0 330 660 990 1320 1650 1980 2310 2640 2970 3300 3630 3960 4290 4620 4950 5280 5610 5940 6270 6600

S 89°19' W 39.71 ch S 88°57' W 38.96 ch



OPERATOR CERTIFICATION

I hereby certify that the information contained herein is true and complete to the best of my knowledge and belief.

Signature
A. M. O'Hare
Printed Name
A. M. O'Hare

Position
President/Agent

Company
Maralex Resources, Inc
Agent for SG Interests I, Ltd

Date
6/24/92

SURVEYOR CERTIFICATION

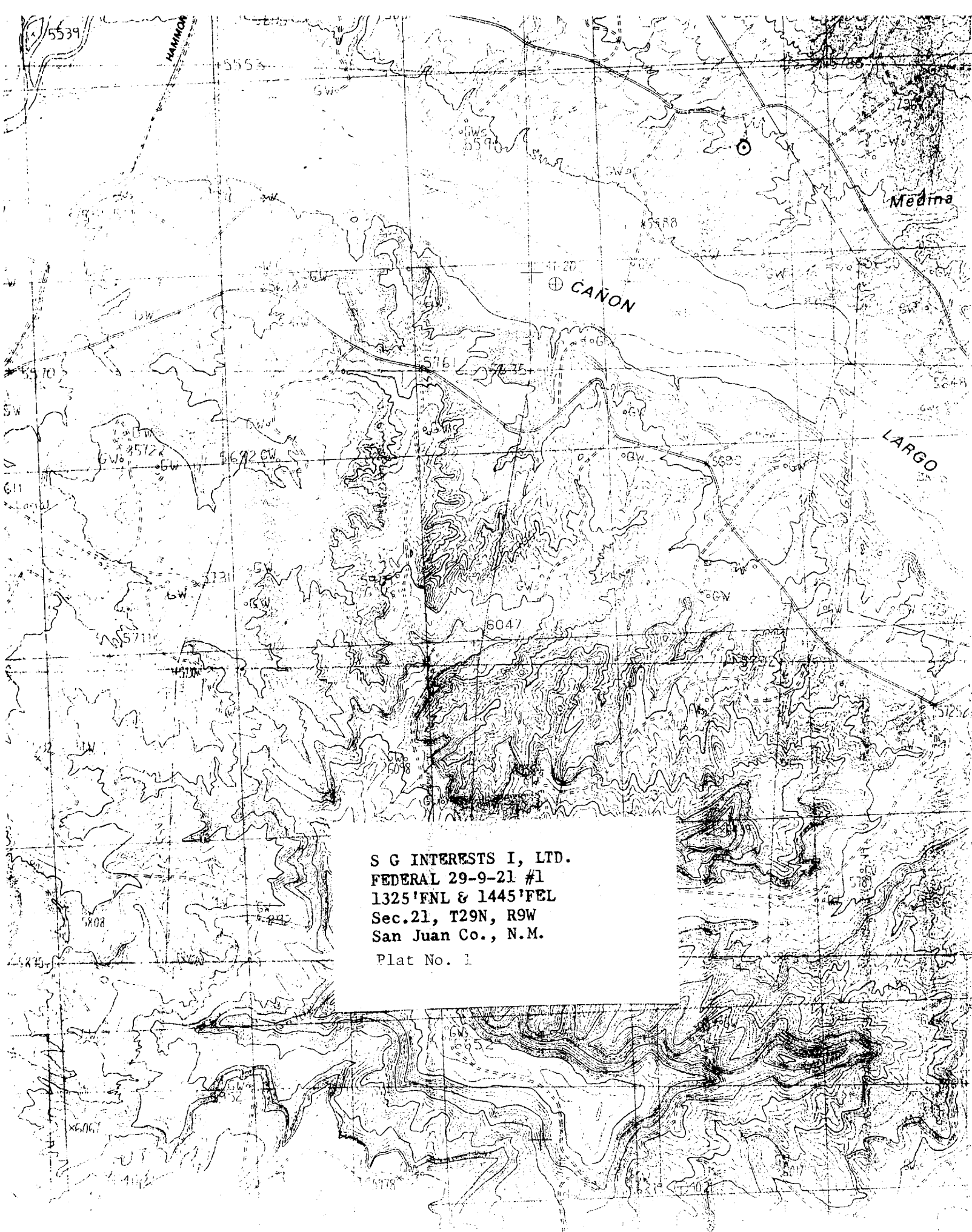
I hereby certify that the well location shown on this plat was plotted from field notes of actual surveys made by me or under my supervision, and that the same is true and correct to the best of my knowledge and belief.

6-18-92

Date Surveyed
William E. Mahnke II

Signature
William E. Mahnke II
Professional Surveyor

NEW MEXICO
#8466
PROFESSIONAL LAND SURVEYOR



S G INTERESTS I, LTD.
FEDERAL 29-9-21 #1
1325'FNL & 1445'FEL
Sec.21, T29N, R9W
San Juan Co., N.M.
Plat No. 1