

UNITED STATES  
DEPARTMENT OF THE INTERIOR  
BUREAU OF LAND MANAGEMENT

APPLICATION FOR PERMIT TO DRILL, DEEPEN, OR PLUG BACK

1a. Type of Work DRILL	5. Lease Number NM-0560422 Unit Reporting Number
1b. Type of Well GAS	6. If Indian, All. or Tribe
2. Operator <b>BURLINGTON RESOURCES</b> Oil & Gas Company	7. Unit Agreement Name
3. Address & Phone No. of Operator PO Box 4289, Farmington, NM 87499 (505) 326-9700	8. Farm or Lease Name El Paso 9. Well Number 1B
4. Location of Well 2165' FNL, 440' FWL Latitude 36° 42.7, Longitude 107° 48.5	10. Field, Pool, Wildcat Blanco Mesaverde 11. Sec., Twn, Rge, Mer. (NMPM) Sec. 20, T-29-N, R-9-W API # 30-045-29845
14. Distance in Miles from Nearest Town 2 miles from Blanco	12. County San Juan 13. State NM
15. Distance from Proposed Location to Nearest Property or Lease Line 440'	17. Acres Assigned to Well 320 W/2
16. Acres in Lease	
18. Distance from Proposed Location to Nearest Well, Drig, Compl, or Applied for on this Lease 200'	
19. Proposed Depth 4724'	20. Rotary or Cable Tools Rotary
21. Elevations (DF, FT, GR, Etc.) 5625'	22. Approx. Date Work will Start
23. Proposed Casing and Cementing Program See Operations Plan attached	DRILLING OPERATIONS AUTHORIZED ARE SUBJECT TO COMPLIANCE WITH ATTACHED "GENERAL REQUIREMENTS"
24. Authorized by: <u>[Signature]</u> Regulatory/Compliance Administrator	<u>2-1-99</u> Date

PERMIT NO. \_\_\_\_\_ APPROVAL DATE APR 19 1999  
APPROVED BY /S/ Duane W. Spencer TITLE Team Lead, Petroleum Management DATE \_\_\_\_\_

Archaeological Report to be submitted

Threatened and Endangered Species Report to be submitted

NOTE: This format is issued in lieu of U.S. BLM Form 3160-3

Title 18 U.S.C. Section 1001, makes it a crime for any person knowingly and willfully to make to any department or agency of the United States any false, fictitious or fraudulent statements or presentations as to any matter within its jurisdiction.

HOLD C104 FOR N.S.L. (E)

NMOCD

District I  
PO Box 1980, Hobbs, NM 88241-1980

District II  
PO Drawer 00, Artesia, NM 88211-0719

District III  
1000 Rio Brazos Rd., Aztec, NM 87410

District IV  
PO Box 2088, Santa Fe, NM 87504-2088

State of New Mexico  
Energy, Minerals & Natural Resources Department

Form C-10  
Revised February 21, 1998  
Instructions on back  
Submit to Appropriate District Office  
State Lease - 4 Copies  
Fee Lease - 3 Copies

OIL CONSERVATION DIVISION  
PO Box 2088  
Santa Fe, NM 87504-2088

33 FEB 21 1999 2:32 ☐ AMENDED REPORT

WELL LOCATION AND ACREAGE DEDICATION PLAT

*API Number 30-039-29845		*Pool Code 72319	*Pool Name Blanco Mesaverde
*Property Code 6966	*Property Name EL PASO		*Well Number 1B
*GRID No. 14538	*Operator Name BURLINGTON RESOURCES OIL & GAS COMPANY		*Elevation 5625'

<sup>10</sup> Surface Location

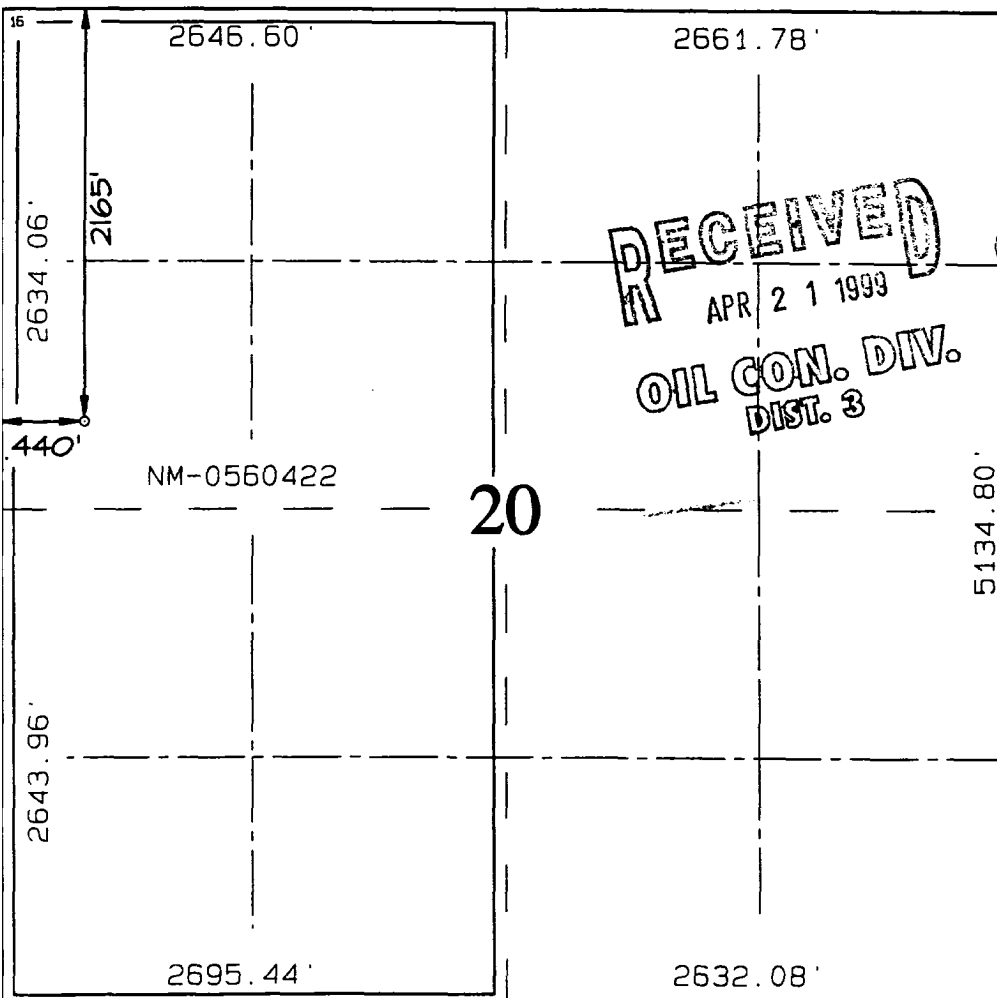
UL or lot no.	Section	Township	Range	Lot Idn	Feet from the	North/South line	Feet from the	East/West line	County
E	20	29N	9W		2165	NORTH	440	WEST	SAN JUAN

<sup>11</sup> Bottom Hole Location If Different From Surface

UL or lot no.	Section	Township	Range	Lot Idn	Feet from the	North/South line	Feet from the	East/West line	County

<sup>12</sup> Dedicated Acres W/320	<sup>13</sup> Joint or Infill	<sup>14</sup> Consolidation Code	<sup>15</sup> Order No.
--	-------------------------------	----------------------------------	-------------------------

NO ALLOWABLE WILL BE ASSIGNED TO THIS COMPLETION UNTIL ALL INTERESTS HAVE BEEN CONSOLIDATED OR A NON-STANDARD UNIT HAS BEEN APPROVED BY THE DIVISION



<sup>17</sup> OPERATOR CERTIFICATION  
I hereby certify that the information contained herein is true and complete to the best of my knowledge and belief.

*Peggy Bradfield*  
Signature  
Peggy Bradfield  
Printed Name  
Regulatory Administrator  
Title  
2-1-99  
Date

<sup>18</sup> SURVEYOR CERTIFICATION

I hereby certify that the well location shown on this plat was plotted from field notes of actual surveys made by me or under my supervision, and that the same is true and correct to the best of my belief.

DECEMBER 9, 1998

Date of Survey

Signature and Seal of Professional Surveyor

NEALE C. EDWARDS  
NEW MEXICO  
6857  
Certificate Number  
6857

# OPERATIONS PLAN

Well Name: El Paso #1B  
Surface Location: 2165' FNL, 440' FWL, Section 20, T-29-N, R-9-W  
San Juan County, New Mexico  
Latitude 36° 42.7, Longitude 107° 48.5

Formation: Blanco Mesa Verde  
Elevation: 5625' GL

<u>Formation Tops:</u>	<u>Top</u>	<u>Bottom</u>	<u>Contents</u>
Surface	San Jose	808'	aquifer
Ojo Alamo	808'	1014'	aquifer
Kirtland	1014'	1526'	gas
Fruitland	1526'	2025'	gas
Pictured Cliffs	2025'	2182'	gas
Lewis	2182'	2724'	gas
<b>Intermediate TD</b>	<b>2282'</b>		
Mesa Verde	2724'	3021'	gas
Chacra	3021'	3725'	gas
Massive Cliff House	3725'	3797'	gas
Menefee	3797'	4324'	gas
Point Lookout	4324'		gas
<b>Total Depth</b>	<b>4724'</b>		

## Logging Program:

Cased hole logging - Gamma Ray, Cement bond from surface to TD  
Mud Logs/Coring/DST - none

## Mud Program:

<u>Interval- MD</u>	<u>Type</u>	<u>Weight</u>	<u>Vis.</u>	<u>Fluid Loss</u>
0- 300'	Spud	8.4-9.0	40-50	no control
300- 2282'	LSND	8.4-9.0	30-60	no control
2282- 4724'	Air/Mist	n/a	n/a	n/a

Pit levels will be visually monitored to detect gain or loss of fluid control.

## Casing Program (as listed, the equivalent, or better):

<u>Hole Size</u>	<u>Measured Depth</u>	<u>Csg Size</u>	<u>Weight</u>	<u>Grade</u>
12 1/4"	0' - 300'	9 5/8"	32.3#	H-40
8 3/4"	0' - 2282'	7"	20.0#	J-55
6 1/4"	2182' - 4724'	4 1/2"	10.5#	J-55

Tubing Program: 0' - 4724' 2 3/8" 4.7# J-55

## BOP Specifications, Wellhead and Tests:

**Surface to Intermediate TD -**

11" 2000 psi minimum double gate BOP stack (Reference Figure #1).  
After nipple-up prior to drilling out surface casing, rams and casing will be tested to 600 psi for 30 minutes.

BURLINGTON RESOURCES OIL & GAS COMPANY EL PASO #1B

2165' FNL & 440' FWL, SECTION 20, T29N, R9W, N.M.P.M.  
SAN JUAN COUNTY, NEW MEXICO

APD MAP #1

200' NEW BLM CONSTRUCTION  
SWNW SECTION 20, T29N, R9W.

