

UNITED STATES
DEPARTMENT OF THE INTERIOR

BUREAU OF LAND MANAGEMENT

APPLICATION FOR PERMIT TO DRILL OR DEEPEN

Form approved.
Budget Bureau No. 1004-0136
Expires: December 31, 1991

1a. TYPE OF WORK b. TYPE OF WELL OIL WELL <input type="checkbox"/> GAS WELL <input checked="" type="checkbox"/> Other <input type="checkbox"/>		DEEPEN <input type="checkbox"/>		SINGLE ZONE <input checked="" type="checkbox"/> MULTIPLE ZONE <input type="checkbox"/>	
2. NAME OF OPERATOR AMOCO PRODUCTION COMPANY				Attention: Mary Corley	
3. ADDRESS AND TELEPHONE NO. P.O. BOX 3092 HOUSTON, TX 77253					
4. LOCATION OF WELL (Report location clearly and in accordance with any State requirements.) At surface 1880' FSL 2150' FWL At proposed prod. zone					
14. DISTANCE IN MILES AND DIRECTION FROM NEAREST TOWN OR POST OFFICE* 14 Miles from Bloomfield, NM					
15. DISTANCE FROM PROPOSED* LOCATION TO NEAREST PROPERTY OR LEASE LINE, FT. (Also to nearest drilg. unit line, if any)		16. NO. OF ACRES IN LEASE 281/356-4491		17. NO. OF ACRES ASSIGNED TO THIS WELL S/ 320	
18. DISTANCE FROM PROPOSED LOCATION* TO NEAREST WELL, DRILLING, COMPLETED, OR APPLIED FOR, ON THIS LEASE, FT.		19. PROPOSED DEPTH 4953'		20. ROTARY OR CABLE TOOLS	
21. ELEVATIONS (Show whether DF, RT, GR, etc.) This action is subject to technical and procedural review pursuant to 43 CFR 3165.35888' GR and appeal pursuant to 43 CFR 3165.4.				22. APPROX. DATE WORK WILL START* 02-01-2000	

PROPOSED CASING AND CEMENTING PROGRAM

SIZE OF HOLE	GRADE OF CASING	WEIGHT PER FOOT	SETTING DEPTH	QUANTITY OF CEMENT	DENSITY (lb/gal)	YIELD (ft ³ /sk)	WATER (gal/sk)	EXCESS %
12 1/4"	H 40 9 5/8"	32.3#	135'	125 SXS (149 CU.FT.) CLS B CIRC TO SURFACE	15.6	1.19	5.2	100%
8 3/4"	J-55 7"	20#	2161'	167 SXS (481 CU.FT.) CLS B - LEAD 134 SXS (159 CU.FT.) CLS B - TAIL	11.4 15.6	2.88 1.19	16.62 5.25	100%
6 1/4"	J-55 4 1/2"	10.5#	4953'	184 SXS (385 CU.FT.) CemPlus Blend (LiteCrete)	10	2.09	6.68	70%

NOTICE OF STAKING SUBMITTED 10/26/1999

OBJECTIVE: Drill 100' into the Mancos shale, set 4 1/2" Liner across MV, perf & stimulate Cliff House, Menefee, & Point Lookout.

METHOD OF DRILLING: Rotary/Top Drive	DEPTH OF DRILLING: 0' - TD
LOG PROGRAM TYPE: Cased Hole (GR-CCL-TDT)	DEPTH INTERVAL: TDT - PBTD to Top of Liner GR & CCL - PBTD to 0'
MUD PROGRAM: INTERVAL 0' - 135' (3 JTS) 135' - 2161' 2161' - TD	TYPE MUD Spud Water/LSND Gas/Air/Mist
	WEIGHT, #/GAL 8.6 - 9.2 8.6 - 9.2 Volume sufficient to maintain a stable and clean wellbore

(1) Circulate Cement to Surface (2) Set Casing 50' above Fruitland Coal

COMPLETION: Rigless, 2 -3 Stage Limited Entry Hydraulic Frac

(3) Liner Lap should be a minimum of 100'
DRILLING OPERATIONS AUTHORIZED ARE
SUBJECT TO COMPLIANCE WITH ATTACHED
"GENERAL REQUIREMENTS"

IN ABOVE SPACE DESCRIBE PROPOSED PROGRAM: If proposal is to deepen, give data on present productive zone and proposed new productive zone. If proposal is to drill or deepen directionally, give pertinent data on subsurface locations and measured and true vertical depths. Give blowout preventer program, if any.

24.

SIGNED

Mary Corley

TITLE SR BUSINESS ANALYST

DATE

01-12-2000

(This space for Federal or State office use)

PERMIT NO.

APPROVAL DATE

Application approval does not warrant or certify that the applicant holds legal or equitable title to those rights in the subject lease which would entitle the applicant to conduct operations thereon.

CONDITIONS OF APPROVAL, IF ANY:

APPROVED BY

/s/ Charlie Beecham

TITLE

DATE

FEB - 3

* See Instructions On Reverse Side

Title 18 U.S.C. Section 1001, makes it a crime for any person knowingly and willfully to make to any department or agency of the United States any false, fictitious or fraudulent statements or representations as to any matter within its jurisdiction.

NMOC

1. strict I
PO Box 1980, Hobbs NM 88241-1980
District II
PO Drawer KK, Artesia, NM 87211-0719
District III
1000 Rio Brazos Rd., Aztec, NM 87410
District IV
PO Box 2088, Santa Fe, NM 87504-2088

State of New Mexico
Energy, Minerals & Natural Resources Department

OIL CONSERVATION DIVISION
PO Box 2088
Santa Fe, NM 87504-2088

Form C-102
Revised February 21, 1994

Instructions on back
Submit to Appropriate District Office
State Lease - 4 Copies
Fee Lease - 3 Copies

2003 JAN 13 11:00 AM
070 RECEIVED
AMENDED REPORT

WELL LOCATION AND ACREAGE DEDICATION PLAT

1 API Number 30-045-30106		2 Pool Code 72319		3 Pool Name BLANCO Mesaverde		
4 Property Code 000460		5 Property Name A L ELLIOTT B			6 Well Number # 2B	
7 OGRID No. 000778		8 Operator Name AMOCO PRODUCTION COMPANY			9 Elevation 5888	

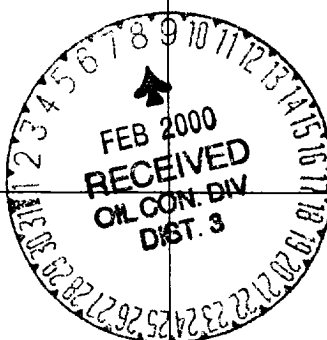
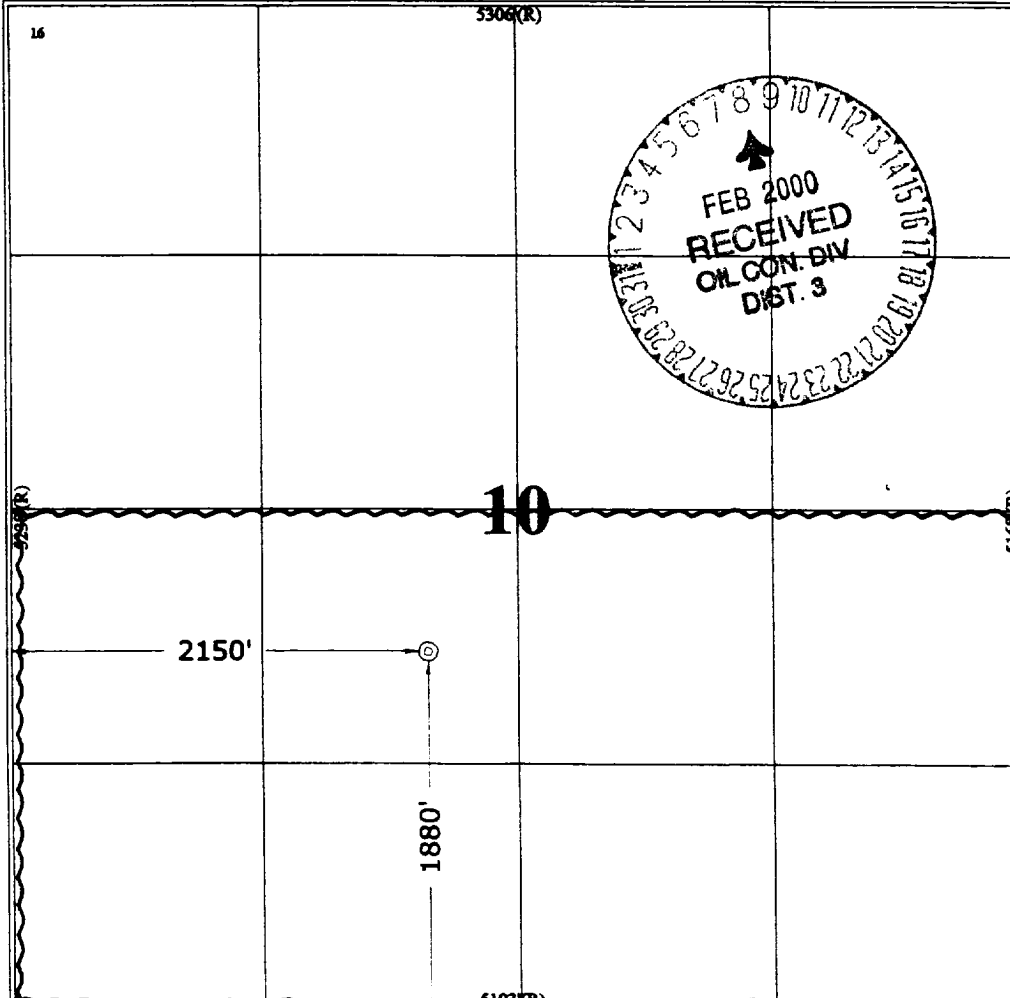
10 Surface Location

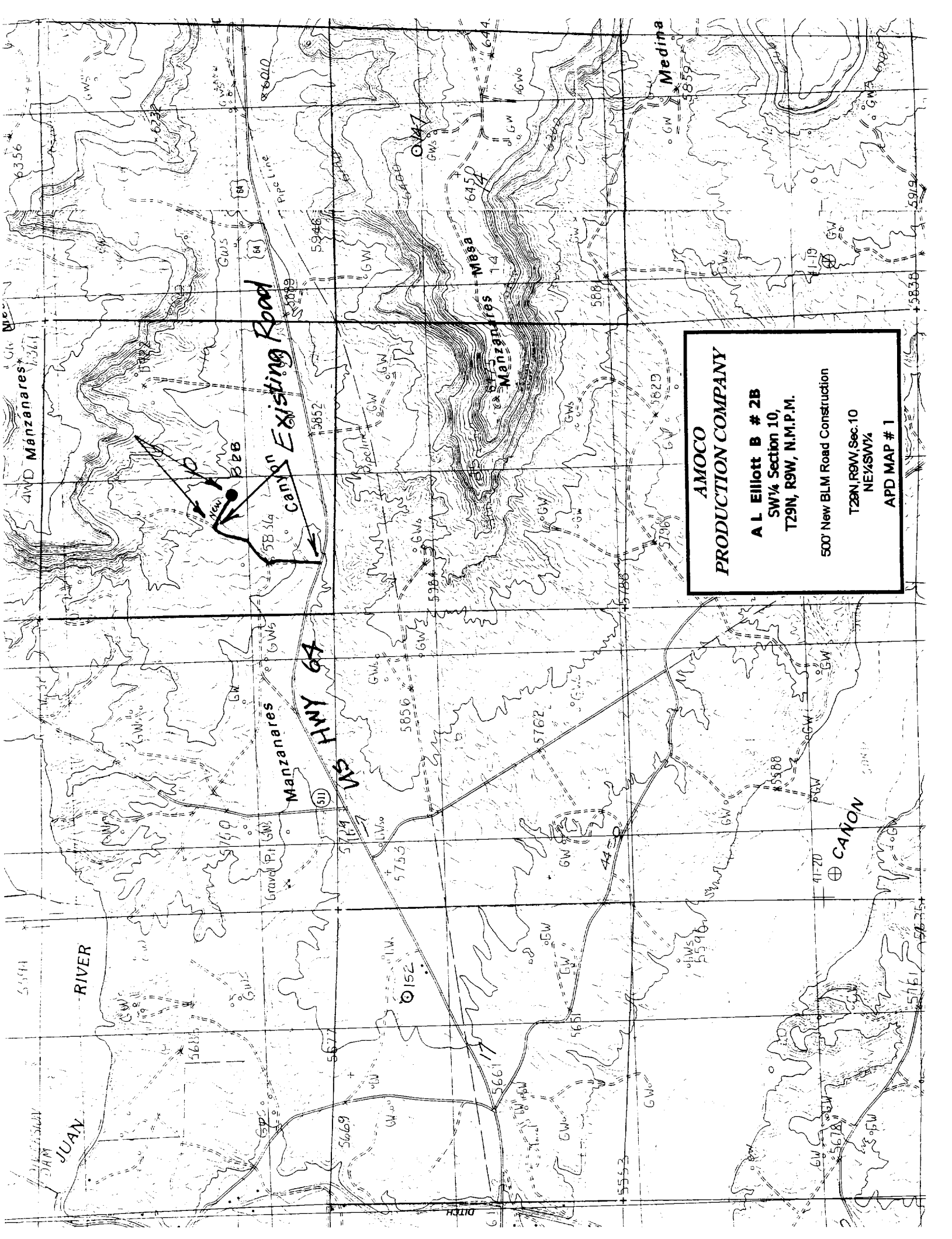
UL or Lot No.	Section	Township	Range	Lot Idn	Feet from the	North/South line	Feet from the	East/West line	County
K	10	29 N	9 W		1880	SOUTH	2150	WEST	SAN JUAN

11 Bottom Hole Location If Different From Surface

1 UL or lot no.	2 Section	3 Township	4 Range	5 Lot Idn	6 Feet from the	7 North/South line	8 Feet from the	9 East/West line	10 County
11 Dedicated Acres 320		12 Joint or Infill		13 Consolidation Code		14 Order No.			

NO ALLOWABLE WILL BE ASSIGNED TO THIS COMPLETION UNTIL ALL INTERESTS HAVE BEEN CONSOLIDATED
OR A NON-STANDARD UNIT HAS BEEN APPROVED BY THE DIVISION

16		5306(R)		17 OPERATOR CERTIFICATION I hereby certify that the information contained herein is true and complete to the best of my knowledge and belief. Signature: <i>Mary Corley</i> Printed Name: <i>Mary Corley</i> Title: <i>Sr. Business Analyst</i> Date: <i>01/12/2000</i>	
18 SURVEYOR CERTIFICATION I hereby certify that the well location shown on this plat was plotted from field notes of actual surveys made by me or under my supervision, and that the same is true and correct to the best of my belief. November 15, 1999 Date of Survey Signature and Seal of Professional Surveyor 7016 Certificate Number		 			



AMOCO
PRODUCTION COMPANY

A L Elliott B # 2B
SW 1/4 Section 10,
T29N, R9W, N.M.P.M.

500 New BLM Road Construction
T29N, R9W, Sec. 10
NE 1/4 SW 1/4
APD MAP # 1