

District I
1625 N. French Dr., Hobbs, NM 88240
District II
811 South First, Artesia, NM 88210
District III
1000 Rio Brazos Road, Aztec, NM 87410
District IV
2040 South Pacheco, Santa Fe, NM 87505

State of New Mexico
Energy Minerals and Natural Resources

Form C-101
Revised March 17, 1999

Oil Conservation Division
2040 South Pacheco
Santa Fe, NM 87505

Submit to appropriate District Office
State Lease - 6 Copies
Fee Lease - 5 Copies

AMENDED REPORT

APPLICATION FOR PERMIT TO DRILL, RE-ENTER, DEEPEN, PLUGBACK, OR ADD A ZONE

¹ Operator Name and Address Amoco Production Company P. O. Box 3092 Houston, Texas 77253		² OGRID Number 000778
³ Property Code 000269		⁴ API Number 30-045-30189
⁵ Property Name Archuleta Gas Com		⁶ Well No. 1B

⁷ Surface Location									
UL or lot no. N	Section 5	Township 29N	Range 9W	Lot Idn	Feet from the 840'	North/South line South	Feet from the 2070'	East/West line West	County San Juan

⁸ Proposed Bottom Hole Location If Different From Surface									
UL or lot no.	Section	Township	Range	Lot Idn	Feet from the	North/South line	Feet from the	East/West line	County
⁹ Proposed Pool 1 Blanco Mesaverde					¹⁰ Proposed Pool 2				

¹¹ Work Type Code N - New Drill	¹² Well Type Code Gas	¹³ Cable/Rotary Rotary/Top Drive	¹⁴ Lease Type Code Fee	¹⁵ Ground Level Elevation 5583'
¹⁶ Multiple No	¹⁷ Proposed Depth 4647'	¹⁸ Formation Mesaverde	¹⁹ Contractor Aztec	²⁰ Spud Date 04/15/2000

²¹ Proposed Casing and Cement Program					
Hole Size	Casing Size	Casing weight/foot	Setting Depth	Sacks of Cement	Estimated TOC
(1) 12 1/4"	9 5/8"	32.3#	135'	125 SXS CLS B	Surface
(2) 8 3/4"	7"	20#	1953'	290 SXS CLS B	Surface
(3) 6 1/4"	4 1/2"	10.5#	4647'	177 SXS CLS B	1850'

²² Describe the proposed program. If this application is to DEEPEN or PLUG BACK, give the data on the present productive zone and proposed new productive zone. Describe the blowout prevention program, if any. Use additional sheets if necessary.

OBJECTIVE: Drill 100' into the Mancos Shale, set 4 1/2" Liner across Mesaverde, Stimulate Cliff House, Menefee, and Point Lookout intervals. Run Cased Hole (GR-CCL-TDT) logs: TDT from PBDT to TOL. GR-CCL from PDTB to Surface.

(1) Circulate Cement to Surface (2) Set Casing 50' above Fruitland. (3) Liner Lap should be minimum of 100'.

Mud Program: 0' - 135' Type - Spud Weight 8.6 - 9.2

135' - 1953' Type - Water Weight 8.6 - 9.2

1953' - TD Type - Gas/Air/Mist Volume sufficient to maintain a stable & clean wellbore

The hole will require sweeps to keep unloaded while fresh water drilling. Let hole conditions dictate frequency

Top set Fruitland to minimize lost circulation, air volume to maintain hole stability

Completion: Rigless, 2 - 3 Stage Limited Entry Hydraulic Frac.

²³ I hereby certify that the information given above is true and complete to the best of my knowledge and belief.

Signature:

Mary Corley

Printed name: **Mary Corley**

Title: **Sr. Business Analyst**

Date: **03/22/2000**

Phone: **281-366-4491**

OIL CONSERVATION DIVISION

Approved by:

JSZ

Title: **SUPERVISOR DISTRICT # 3**

Approval Date:

MAR 23 2000

Expiration Date:

MAR 23 2001

Conditions of Approval:

Attached

District I
PO Box 1980, Hobbs NM 88241-1980
District II
PO Drawer KK, Artesia, NM 87211-0719
District III
1000 Rio Brazos Rd., Aztec, NM 87410
District IV
PO Box 2088, Santa Fe, NM 87504-2088

State of New Mexico
Energy, Minerals & Natural Resources Department

OIL CONSERVATION DIVISION
PO Box 2088
Santa Fe, NM 87504-2088

Form C-102
Revised February 21, 1994

Instructions on back
Submit to Appropriate District Office
State Lease - 4 Copies
Fee Lease - 3 Copies

☐ AMENDED REPORT

WELL LOCATION AND ACREAGE DEDICATION PLAT

¹ API Number 30-045-30189		² Pool Code 72319		³ Pool Name Blanco Mesa Verde	
⁴ Property Code 000269		⁵ Property Name ARCHULETA GAS COM A			⁶ Well Number # 1B
⁷ OGRID No. 000 778		⁸ Operator Name AMOCO PRODUCTION COMPANY			⁹ Elevation 5583

¹⁰ Surface Location

UL or Lot No.	Section	Township	Range	Lot Idn	Feet from the	North/South line	Feet from the	East/West line	County
N	5	29 N	9 W		840	SOUTH	2070	WEST	SAN JUAN

¹¹ Bottom Hole Location If Different From Surface

⁷ UL or lot no.	Section	Township	Range	Lot Idn	Feet from the	North/South line	Feet from the	East/West line	County
¹² Dedicated Acres 3.20		¹³ Joint or Infill		¹⁴ Consolidation Code		¹⁵ Order No.			

NO ALLOWABLE WILL BE ASSIGNED TO THIS COMPLETION UNTIL ALL INTERESTS HAVE BEEN CONSOLIDATED
OR A NON-STANDARD UNIT HAS BEEN APPROVED BY THE DIVISION

¹⁶		¹⁷ OPERATOR CERTIFICATION	
		<p>I hereby certify that the information contained herein is true and complete to the best of my knowledge and belief.</p> <p><i>Mary Cerley</i> Signature MARY CERLEY Printed Name SR. REGULATORY Analyst Title 3/22/2000 Date</p>	
<p>¹⁸ SURVEYOR CERTIFICATION</p> <p>I hereby certify that the well location shown on this plat was plotted from field notes of actual surveys made by me or under my supervision, and that the same is true and correct to the best of my belief.</p> <p>March 10, 2000 Date of Survey</p> <p><i>GARY D. VANN</i> Signature and Seal of Professional Surveyor</p> <p></p> <p>7016 Certificate Number</p>			

**Amoco Production Company
BOP Pressure Testing Requirements**

Well Name: Archuleta Gas Com A 1B

County: San Juan

State: New Mexico

Formation	TVD	Anticipated Bottom Hole Pressure	Maximum Anticipated Surface Pressure **
Ojo Alamo	1133'		
Kirtland	1094'		
Fruitland Coal	2003'		
Pictured Cliffs	2158'		
Lewis Shale	2308'		
Cliff House	3750'	500	0
Menefee Shale	3918'		
Point Lookout	4393'	600	0
Mancos	4547'		

** Note: Determined using the following formula: $ABHP - (.22 * TVD) = ASP$

Requested BOP Pressure Test Exception: 750 PSI

**SAN JUAN BASIN
Mesaverde Formation
Pressure Control Equipment**

Background

The objective Mesaverde formation maximum surface pressure is anticipated to be less than 1000 PSI, based on shut-in surface pressures from adjacent wells. Pressure control equipment working pressure minimum requirements are therefore 2000 PSI. Equipment to be used will conform to API RP-53 (Figure 2.C.2) for a 2000 PSI system per Federal Onshore Order No. 2. Due to available conventional equipment within the area, 3000 PSI rated pressure control equipment will typically be utilized in a double ram type arrangement. Regional drilling rights to be utilized have substructure height limitations which exclude the use of annular preventers; therefore a rotating head will be installed above these rams. This pressure control equipment will be utilized for conventional drilling below conductor to total depth. No abnormal temperature, pressure, or Hydrogen Sulfide gas is anticipated.

Equipment Specification

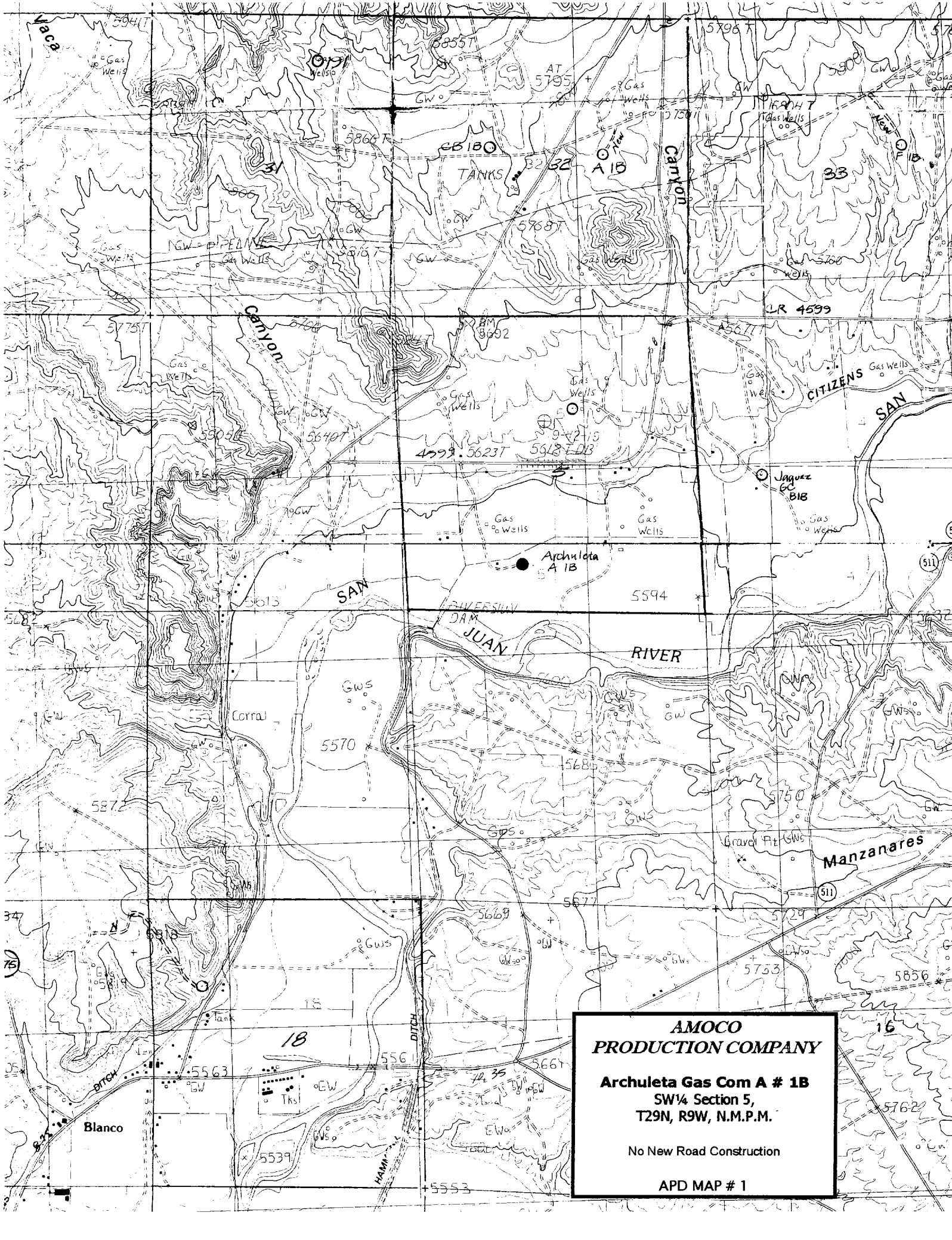
Interval

BOP Equipment

Below conductor casing to total depth

11" nominal or 7 1/16", 3000 PSI double ram
preventer with rotating head.

All ram type preventers and related control equipment will be hydraulically tested to 250 PSI (low pressure) and 750 PSI (high pressure), upon installation, following any repairs or equipment replacements, or at 30 day intervals. Accessories to BOP equipment will include Kelly cock, upper Kelly cock with a handle available, floor safety valves and choke manifold which will also be tested to equivalent pressure at the appropriate intervals.



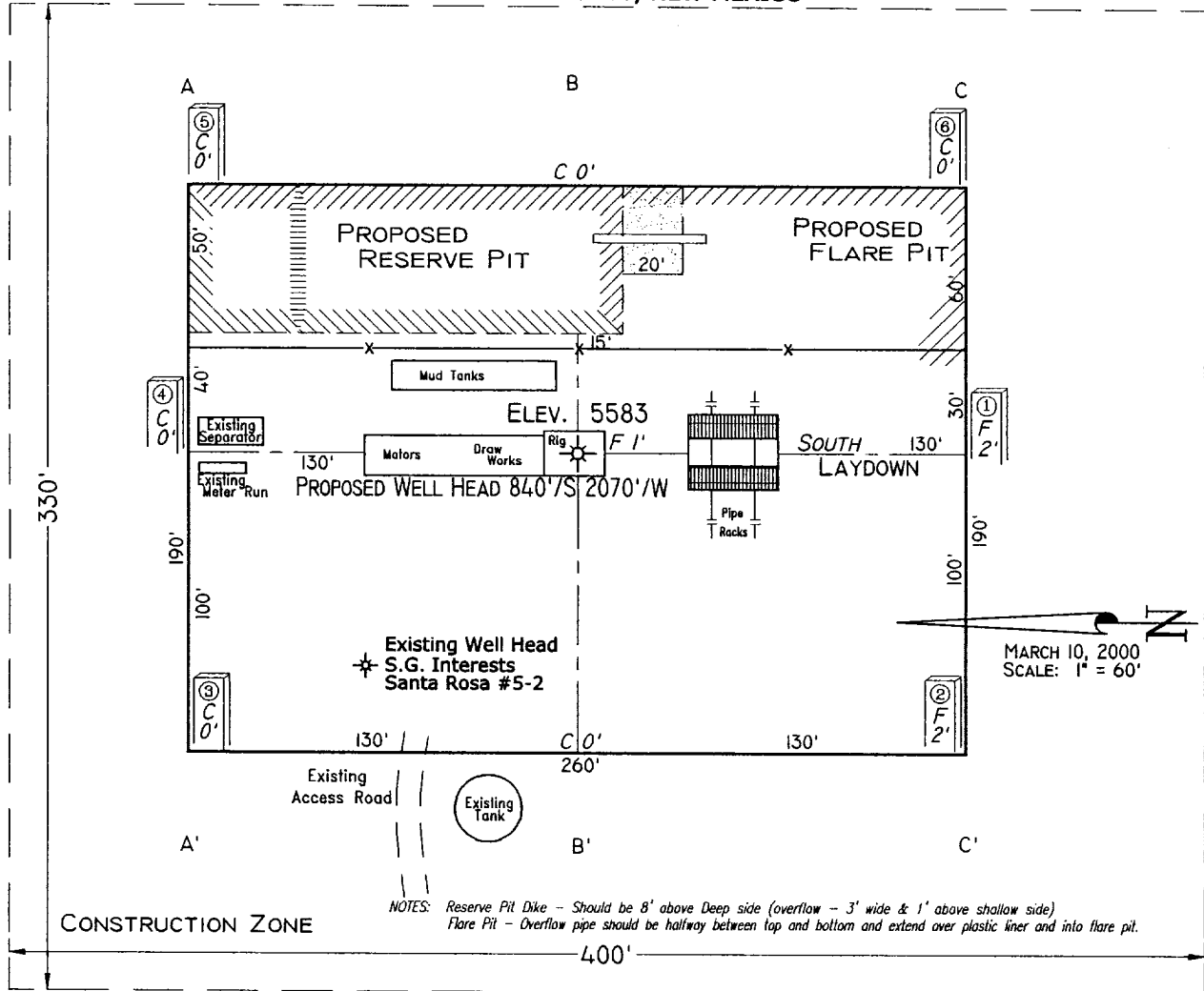
**AMOCO
PRODUCTION COMPANY**

Archuleta Gas Com A # 1B
SW¼ Section 5,
T29N, R9W, N.M.P.M.

No New Road Construction

APD MAP # 1

PAD LAYOUT PLAN & PROFILE
AMOCO PRODUCTION COMPANY
 Archuleta Gas Com A #1B
 840' F/SL 2070' F/WL
 SEC. 5, T29N, R9W, N.M.P.M.
 SAN JUAN COUNTY, NEW MEXICO



Area of Construction Zone - 330'x400' or 3.03 acres, more or less.

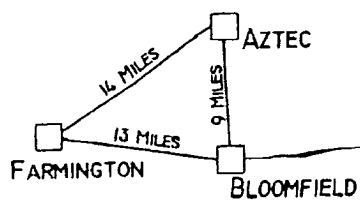
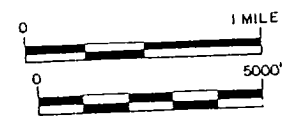
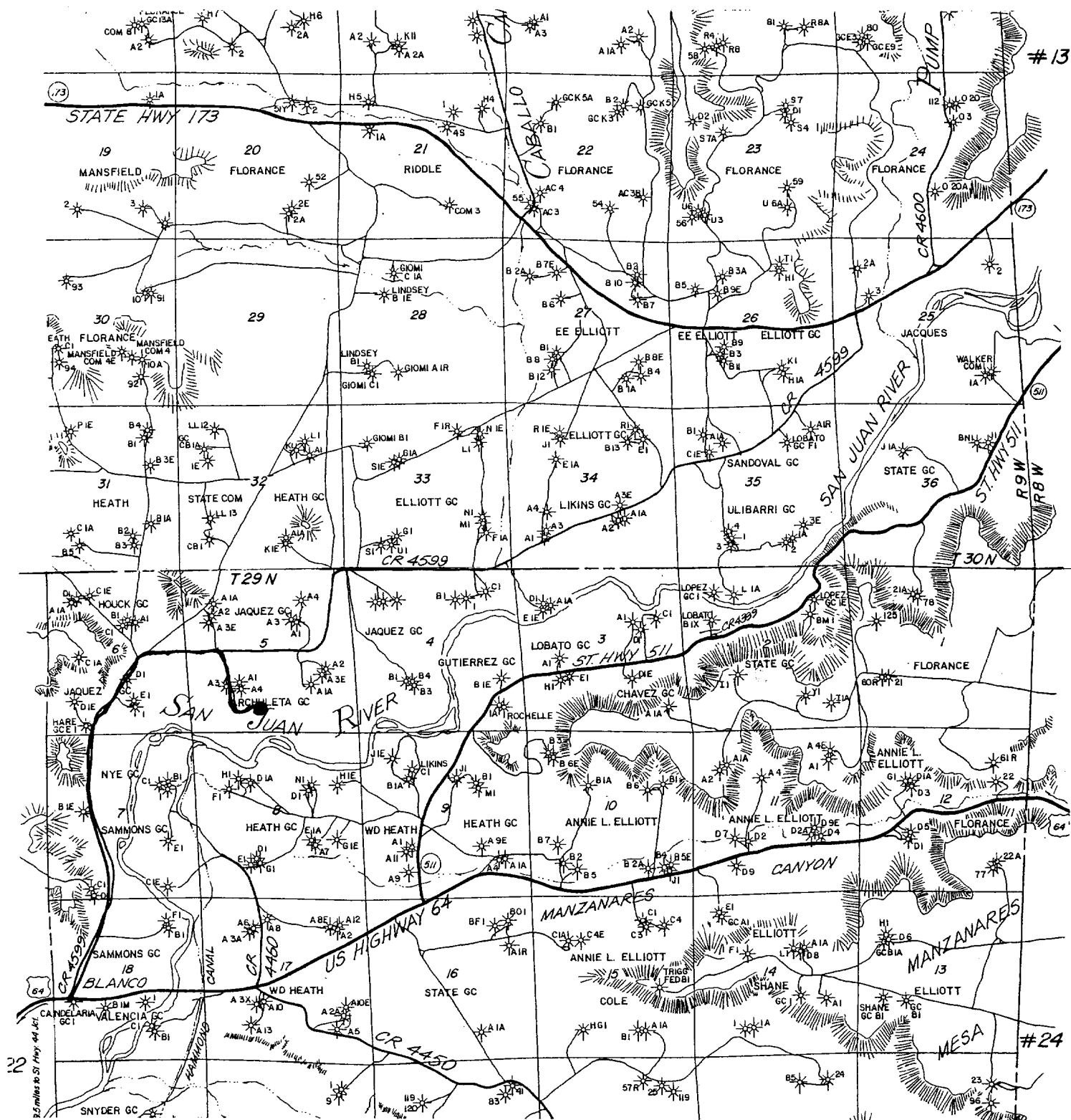
SCALE: 1"=60'-HORIZ.
 1"=40'-VERT.

A-A'	CL					
5600						
5590						
5580						
5570						
B-B'	CL					
5600						
5590						
5580						
5570						
C-C'	CL					
5600						
5590						
5580						
5570						

NOTE: Contractor should call One-Call for location of any marked or unmarked buried pipelines or cables on well pad and/or access road at least two (2) working days prior to construction.

Cuts and fills shown are approximate - final finished elevation is to be adjusted so earthwork will balance. Corner stakes are approximate and do not include additional areas needed for sideslopes and drainages. Final Pad Dimensions are to be verified by Contractor.

VANN SURVEYS
 P. O. Box 1306
 Farmington, NM



LAT: 36°44.0'
LONG: 107°48.3'

AMOCO PRODUCTION COMPANY
Archuleta Gas Com A # 1B
SW¼ Sec. 5, T29N, R9W, NMPM
RAIL POINT:
MUD POINT:
CEMENT POINT: