

District I  
1625 N. French Dr., Hobbs, NM 88240  
District II  
811 South First, Artesia, NM 88210  
District III  
1000 Rio Brazos Road, Aztec, NM 87410  
District IV  
2040 South Pacheco, Santa Fe, NM 87505

State of New Mexico  
Energy Minerals and Natural Resources

Form C-101  
Revised March 17, 1999

Oil Conservation Division  
2040 South Pacheco  
Santa Fe, NM 87505

Submit to appropriate District Office  
State Lease - 6 Copies  
Fee Lease - 5 Copies

☐ AMENDED REPORT

**APPLICATION FOR PERMIT TO DRILL, RE-ENTER, DEEPEN, PLUGBACK, OR ADD A ZONE**

<sup>1</sup> Operator Name and Address Conoco Inc., 10 Desta Drive, Suite 649W, Midland, TX 79705		<sup>2</sup> OGRID Number 005073
<sup>3</sup> Property Code 003276	<sup>5</sup> Property Name State Com P	<sup>4</sup> API Number 30 - 045 = 30427 <sup>6</sup> Well No. 12M

**<sup>7</sup> Surface Location**

UL or lot no.	Section	Township	Range	Lot Idn	Feet from the	North/South line	Feet from the	East/West line	County
K	36	29N	8W		1870	South	1845	West	San Juan

**<sup>8</sup> Proposed Bottom Hole Location If Different From Surface**

UL or lot no.	Section	Township	Range	Lot Idn	Feet from the	North/South line	Feet from the	East/West line	County

<sup>9</sup> Proposed Pool 1 Basin Dakota	<sup>10</sup> Proposed Pool 2
--	-------------------------------

<sup>11</sup> Work Type Code N —	<sup>12</sup> Well Type Code G —	<sup>13</sup> Cable/Rotary R	<sup>14</sup> Lease Type Code S —	<sup>15</sup> Ground Level Elevation 6188' —
<sup>16</sup> Multiple No	<sup>17</sup> Proposed Depth 7310' —	<sup>18</sup> Formation Dakota	<sup>19</sup> Contractor NA	<sup>20</sup> Spud Date 11/15/00

**<sup>21</sup> Proposed Casing and Cement Program**

Hole Size	Casing Size	Casing weight/foot	Setting Depth	Sacks of Cement	Estimated TOC
12-1/2"	J-55, 9-5/8"	36#	250'	124	Surface
8-3/4"	J-55, 7"	20#	3600' —	507	Surface
6-1/4"	J-55, 4-1/2"	10.5#	7310' —	495	3500' —

<sup>22</sup> Describe the proposed program. If this application is to DEEPEN or PLUG BACK, give the data on the present productive zone and proposed new productive zone. Describe the blowout prevention program, if any. Use additional sheets if necessary.

It is proposed to drill a vertical wellbore to the Basin Dakota Pool. The well will be drilled and equipped according to the following attachments.

1. Well location and acreage dedication plat (C-102).
2. Proposed Well Plan Outline
3. Cementing Program
4. BOP/Choke Diagram

<sup>23</sup> I hereby certify that the information given above is true and complete to the best of my knowledge, and belief.

Signature: *Kimberly Southall*  
Printed name: Kimberly Southall

Title: Analyst

Date: 11/10/00

Phone: 915/686-5565

**OIL CONSERVATION DIVISION**

Approved by: *[Signature]*  
Title: **DEPUTY OIL CONSERVATION DIVISION**

Approval Date: **NOV 16 2000** Expiration Date: **NOV 16 2001**

Conditions of Approval:

Attached ☐

District I  
PO Box 1980, Hobbs, NM 88241-1980

State of New Mexico  
Energy, Minerals & Natural Resources Department

Form C-102  
Revised February 21, 1994

District II  
PO Drawer DD, Artesia, NM 88211-0719

Instructions on back  
Submit to Appropriate District Office  
State Lease - 4 Copies  
Fee Lease - 3 Copies

District III  
1000 Rio Brazos Rd., Aztec, NM 87410

OIL CONSERVATION DIVISION  
PO Box 2088  
Santa Fe, NM 87504-2088

District IV  
PO Box 2088, Santa Fe, NM 87504-2088

☐ AMENDED REPORT

### WELL LOCATION AND ACREAGE DEDICATION PLAT

*API Number 30-045-30427	*Pool Code 71599	*Pool Name BASIN DAKOTA
*Property Code 003276	*Property Name STATE COM P	*Well Number 12M
*GRID No. 005073	*Operator Name CONOCO, INC.	*Elevation 6188'

#### <sup>10</sup> Surface Location

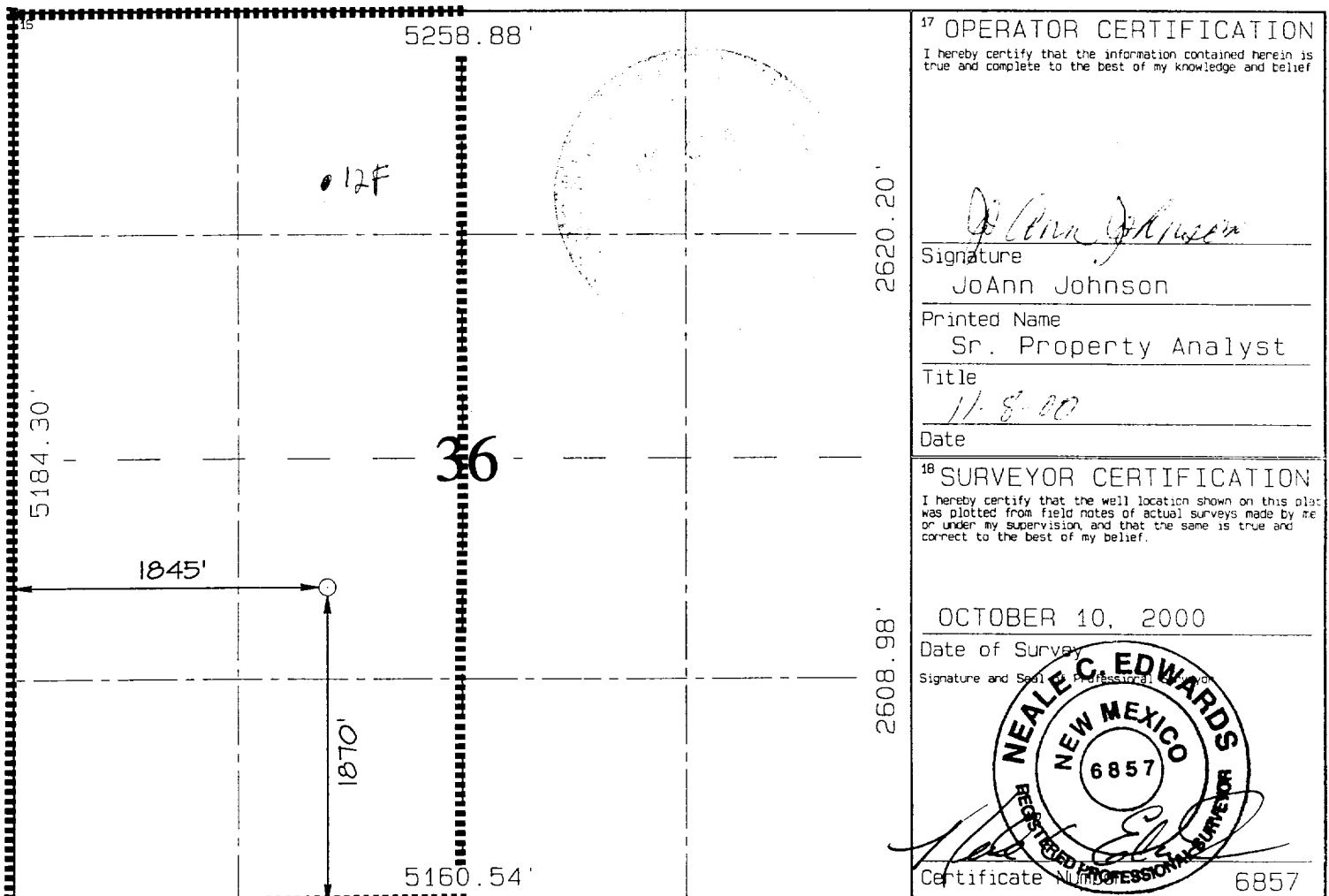
UL or lot no. K	Section 36	Township 29N	Range 8W	Lot Idn.	Feet from the 1870	North/South line SOUTH	Feet from the 1845	East/West line WEST	County SAN JUAN
--------------------	---------------	-----------------	-------------	----------	-----------------------	---------------------------	-----------------------	------------------------	--------------------

#### <sup>11</sup> Bottom Hole Location If Different From Surface

UL or lot no.	Section	Township	Range	Lot Idn.	Feet from the	North/South line	Feet from the	East/West line	County
---------------	---------	----------	-------	----------	---------------	------------------	---------------	----------------	--------

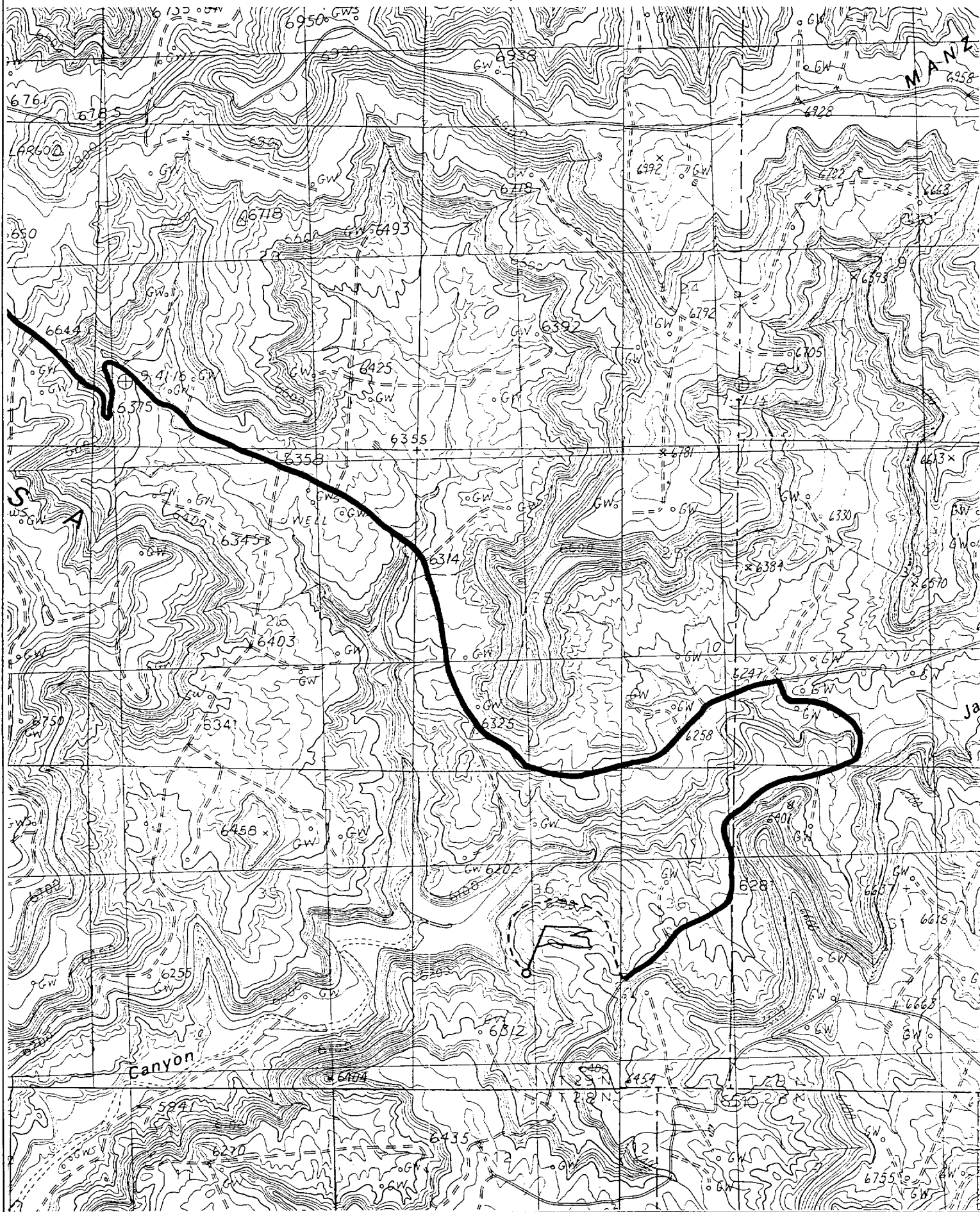
<sup>12</sup> Dedicated Acres 320 WJ	<sup>13</sup> Joint or Infill	<sup>14</sup> Consolidation Code	<sup>15</sup> Order No.
---	-------------------------------	----------------------------------	-------------------------

NO ALLOWABLE WILL BE ASSIGNED TO THIS COMPLETION UNTIL ALL INTERESTS HAVE BEEN CONSOLIDATED  
OR A NON-STANDARD UNIT HAS BEEN APPROVED BY THE DIVISION



CONOCO, INC. STATE COM P #12M

1870' FSL & 1845' FWL, SECTION 36, T29N, R8W, N.M.P.M.  
SAN JUAN COUNTY, NEW MEXICO



# BOP SPECIFICATIONS

