

State of New Mexico
Energy, Minerals and Natural ResourcesForm C-105
Revised March 25, 1999OIL CONSERVATION DIVISION
2040 South Pacheco
Santa Fe, NM 87505

WELL API NO.

30-045-30428

5. Indicate Type of Lease

STATE ☒ FEE ☐

6. State Oil & Gas Lease No. _____

WELL COMPLETION OR RECOMPLETION REPORT AND LOG

1a. Type of Well:

OIL WELL ☐ GAS WELL ☒ DRY ☐ OTHER _____

b. Type of Completion:

NEW WORK PLUG DIFF.
WELL ☒ OVER ☐ DEEPEN ☐ BACK ☐ RESVR. ☐ OTHER ☐

2. Name of Operator

CONOCO INC.

3. Address of Operator

P.O. BOX 2197, DU 3066 HOUSTON, TEXAS 77252

7. Lease Name or Unit Agreement Name

STATE COM Q

8. Well No.

13M

9. Pool name or Wildcat

BLANCO MESA VERDE/BASIN DAKOTA

4. Well Location

Unit Letter P : 795 Feet From The SOUTH Line and 780 Feet From The EAST LineSection 36, Township 29N Range 08W NMPM SAN JUAN County, NM

10. Date Spudded

02/06/01

11. Date T.D. Reached

05/21/01

12. Date Compl. (Ready to Prod.)

05/21/01

13. Elevations (DF& RKB, RT, GR, etc.)

6440'

14. Elev. Casinghead

15. Total Depth

7535

16. Plug Back T.D.

7522

17. If Multiple Compl. How Many Zones?

2

18. Intervals Drilled By

Rotary Tools

Cable Tools

19. Producing Interval(s), of this completion - Top, Bottom, Name

BLANCO MESA VERDE - ~~4703'-6559~~

4706-5364

20. Was Directional Survey Made

NO

21. Type Electric and Other Logs Run

CEMENT BOND LOG, DUAL BURST THERMAL DECAY TIME LOG

21. Was Well Cored

NO

23. CASING RECORD (Report all strings set in well)

CASING SIZE	WEIGHT LB./FT.	DEPTH SET	HOLE SIZE	CEMENTING RECORD	AMOUNT PULLED
9.625"	36	295	12.25"	139S	
7"	20	3613	8.75"	589S	
4.5"	10.5	7535	6.25"	358S	

24. LINER RECORD

SIZE	TOP	BOTTOM	SACKS CEMENT	SCREEN	SIZE	DEPTH SET	PACKER SET
					2.375"	7467	

25. TUBING RECORD

26. Perforation record (interval, size, and number)

PLEASE SEE ATTACHED DAILY COMPLETION INFO

27. ACID, SHOT, FRACTURE, CEMENT, SQUEEZE, ETC.

DEPTH INTERVAL AMOUNT AND KIND MATERIAL USED

28. PRODUCTION

Date First Production		Production Method (Flowing, gas lift pumping - Size and type pump)			Well Status (Producing or Shut-in)		
05/21/01		FLOWING			PROD		
Date of Test	Hours Tested	Choke Size	Prod'n For Test Period	Oil - Bbl	Gas - MCF	Water - Bbl	Gas - Oil Ratio
05/17/01	24	1/2"		0	2.301MMCFPD	4	
Flow Tubing Press.	Casing Pressure	Calculated 24-Hour Rate	Oil - Bbl.	Gas - MCF	Water - Bbl.	Oil Gravity - API - (Corr.)	
0	310		0	2.301MMCFP	4		

29. Disposition of Gas (Sold, used for fuel, vented, etc.)

VENTED

Test Witnessed By

MARK MABE

30. List Attachments

COMPLETION INFORMATION

31. I hereby certify that the information shown on both sides of this form as true and complete to the best of my knowledge and belief

Signature

Debra Sittner

Printed

Name DEBRA SITTNER

Title

Date

STATE COM Q #13M

30-045-30428

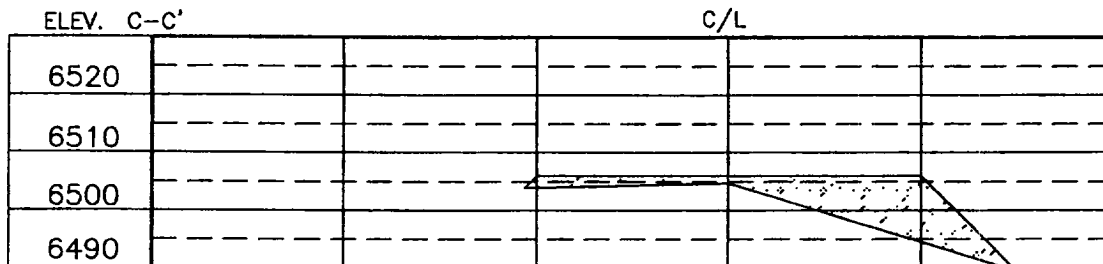
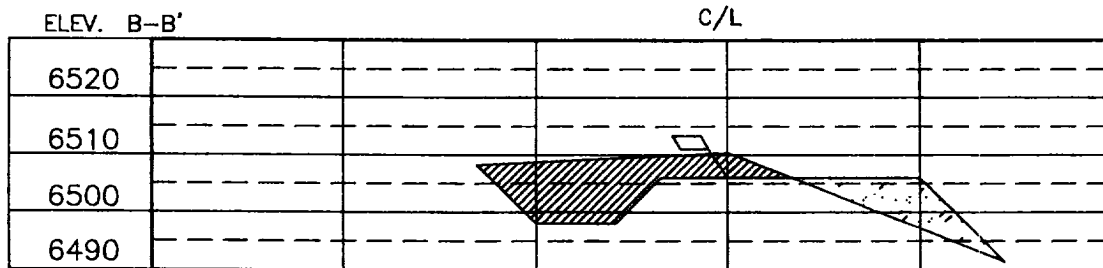
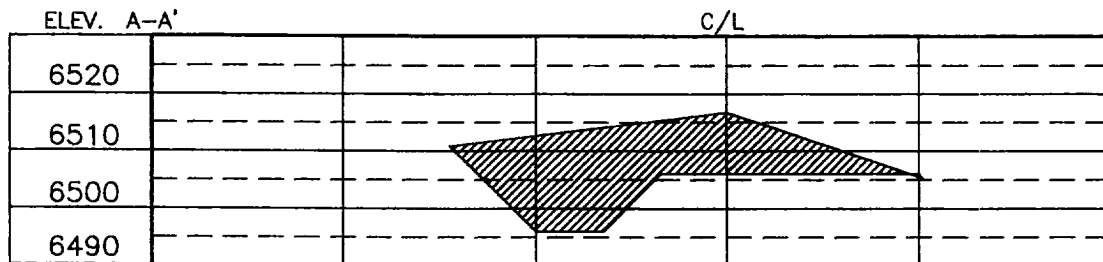
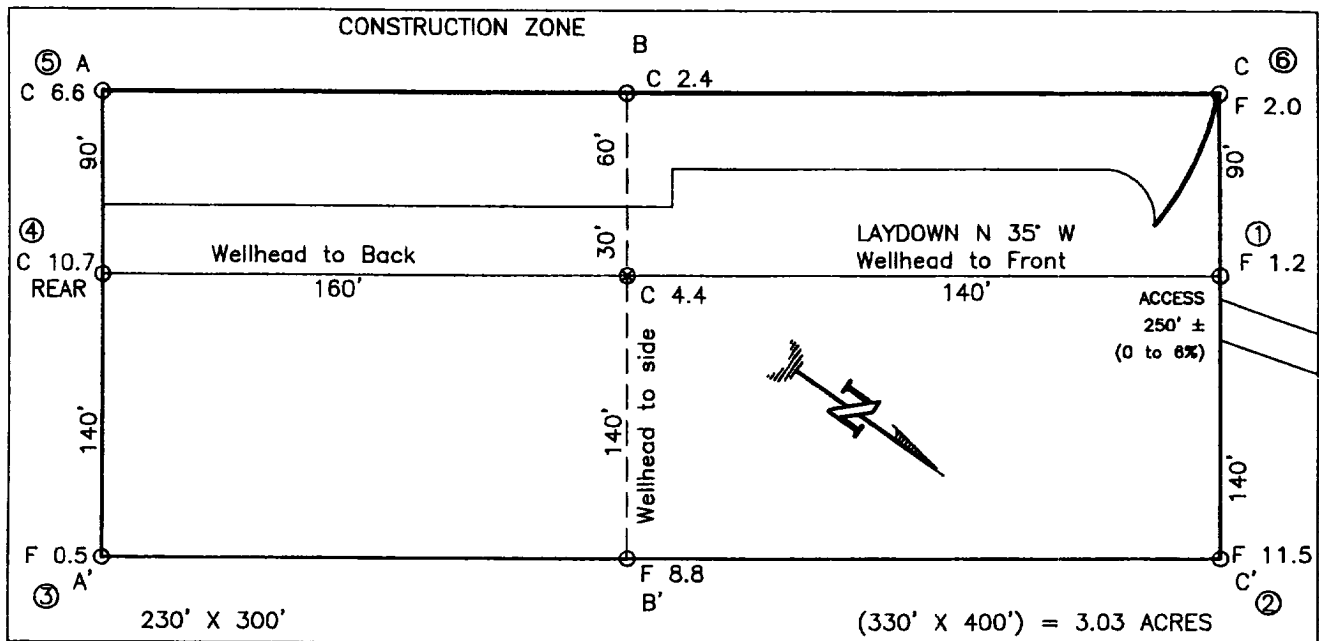
795' FSL - 780' FEL, Section 36, T29N-R08W
San Juan County, NM

Date	Operations
3/21/2001	Held safety mtg. RU Schlumberger logging truck and mast truck. RD wellhead. PU logging tools and RIH to 7435' and tag cement. Run TDT/GR/CCL log from 7435' to 2000'. POOH and PU CBL logging tools. RIH to 7435 and tag up on cement again. RU Stinger well heads pressure pump. Pressure up to 1000# and Run CBL/GR/CCL log from 7435' to 13'. TOC @ 2224' w/ stringers up to 2010'. POOH, RU wellhead. Tested casing to 4300# and held for 15 min. Test looked good. Witnessed by W. Shenefield w/ MVCI. Bleed psi off, secure well and SD. Will need to drill out rat hole w/ coil tubing unit.
3/26/2001	Held safety mtg. RU coil tubing unit. RIH w/ 1 1/2" CT w/ mill and motor. Tagged up @ 7511'. Drill and c/o to FC @ 7522' w/kb (coil tubing measurement). POOH w/CT and RD unit. Secure well and SD.
4/16/2001	RU 2 - 7 1/16"x 5000# valves. RU Blue jet wireline. PU 3 1/8", 90° PP w/12g 306T charges and RIH and perforate DK as follows: 7350' to 7390' .5spf w/21 holes, 7452' to 7455' 1spf w/4 holes, 7484' to 7495' 1spf w/12 holes. Tot ft perf=54', Tot # holes=37. Secure well and SDFN.
4/17/2001	Held safety mtg. RU BJ Services frac unit. Pressure test lines to 4800#. Set pop off @ 3790#. Start B/D. Formation broke @ 2800#. Pumped 24 bbl 15% hcl w/10 gal Ferrotrol 300-I, 2 gal Ci-22, 1 gal FB-20, and 45 7/8" 1.1 SG. Bio-Sealers showed good ball action but did not ball-off. ISDP=1080#, Start step test @ 38 bpm & 3280#, step to 27 bpm & 2250#, step to 19 bpm & 1858#, step to 12 bpm & 1500#, ISDP= 1250#. FG=.60 psi/ft. Leak off is as follows: 5 min=1010#, 10 min=810#, 15 min=663#. Start pad @ 45 bpm & 3240#, St .5# @ 45 bpm & 2864#, St 1# @ 45 bpm & 2812#, St 2# @ 45 bpm & 2755#, St 3# @ 45 bpm & 2725, St 4# @ 45 bpm & 2714#, St 5# @ 45 bpm & 2867#, Flush w/ 115 bbl and called it @ 4# on blender densiometer. ISDP= 1850#, 5 min=1783#. 102,620# 20/40 super LC. Clean tot= 1138 bbl Sand laden fluid=841 bbl, Fluid to recover=1542 bbl. AV pres=2820#, AV rate= 45 bpm. RD frac unit. Secure well and SDFN.
4/27/2001	RU Blue jet wireline. PU 4.5" Halliburton comp plug and RIH and set @ 5500'. POOH and RU BJ Services and test plug to 4300#. Tested well. PU 3 1/8" csd. hole guns w/90° PP w/ 12g 306T charges and perforate MV as follows: 4706'-4718, 4754'-4760', 4772'-4778', 4838'-4840', 4857'-4859', 4954'-4956', 4982'-4986', 5018'-5020', 5084'-5088', 5188'-5198', 5228'-5034', 5288'-5306', 5322'-5344', 5356'-5364'. RU BJ Services frac unit. Pressure test lines to 5000#. Set pop-off @ 3870#. Start B/D. Formation broke @ 1920#. Pumped 2% kcl, and 80 7/8" 1.3 SG. RCN ball sealers..Showed good ball action but did not ball-off. ISDP=0#, RU junk basket RIH and retrieve 56 w/39 hits. Start step test @ 70 bpm & 3805#, step to 62 bpm & 2356#, step to 48 bpm & 1222#, , ISDP= 0#. FG=.43 psi/ft. Leak off is as follows: 5 min=0. Start slick water pad @ 92 bpm & 3086#, St .5# @ 92 bpm & 2720#, St 1# @ 94 bpm & 3183#, St 2# @ 93 bpm & 2972#, Flush w/ 71bbl and called it @ 2.5# on blender densiometer. ISDP= 98#, 5 min=0#. 174,020# 20/40 20/40 brady. Clean tot= 2595 bbl Sand laden fluid=1989 bbl, Fluid to recover=2955 bbl. AV pres=2850#, AV rate= 92 bpm. RD frac unit. Secure well and SDFN. WELL WAS TAGGED W/# ISOTOPES> PAD-13mc scandium 46LD, .5-1# 12 mc Antimony 124 ZW, 2#- iridium 192. 60mc..
5/14/2001	SICP: 720 psi. Spot in remainder of equipment. RU blooey line. Bleed well down. ND frac valve. SWI-SDON.
5/15/2001	SITP: 560 psi. SICP: 620 psi. Bled well down. TIH & tagged sand @ 5342'. Built mist. Cleaned out f/ 5342'-5475' PUH to 4700'. Flowed well to pit on a 1/2" choke for 3 hrs. FCP stabilized @ 350 psi. Flowed heavy mist of water with a trace of oil and light sand. Estimated flow rate of 2.301 mcf/day. TIH & tagged sand @ 5344'. Built mist. Cleaned out f/5344'-5490'. PUH to 4700'. SWI-SDON.
5/16/2001	SICP: 600 psi. Bled well down to 250 psi. Killed well with 20 bbls KCL water. TIH with 3 7/8" OD mill, bit sub & 2 3/8" tubing. Unloaded hole @ 3500'. TIH & tagged sand @ 5373'. Built mist. Cleaned out f/ 5373'-5460'. Blew hole clean. PUH to 4700'. SWI-SDON.
5/17/2001	SITP: 550 psi. SICP: 600 psi. Bled well down. TIH& tag@ 5346'. Built mist & cleaned out f/ 5346'-5475'. Circ'd clean. PUH to 4700'. Flowed well 13 hrs to pit on a 1/2" choke. FTP:0 psi. FCP: 310 psi. Flowed 4 bbls water. Trace of oil. Perfs: 4706'-4859', 4954'-5198', 5288-5364'.
5/18/2001	SITP: 50psi. FCP: 310 psi. TIH & tagged @ 5348'. Built mist & cleaned out f/ 5348'-5500'. Drilled comp plug f/ 5500-5502'. TIH & tagged @ 7477'. DK Test: FTP: 740 psi. FCP: 786 psi. 1/2" choke. 0 oil, 40 bpd water 2.1 mmcf/d gas. Cleaned out sand from 7477'-7522'(PBTD). Blew hole clean. PUH to 4700'. SWI-SDON.
5/21/2001	SITP: 520 psi. SICP: 650 psi. Bled well down. TIH & tagged @ 7500'. Built mist and cleaned out to PBTD of 7522'. TOH. LD bit sub and mill. TIH with 236 jts 2 3/8 4.7# J55 8RD EUE T&C used tubing, SN, POP Landed tubing @ 7467'. SN @ 7466'. Pressured up on tubing with air to 1900 psi and pumped out POP. ND BOP. NU tree. FINAL REPORT. This well is now a DK/MV DHC. Will flow well 30 days, run spinner survey.

CONOCO
State Com Q 13M Formation Tops
Unit Ltr. P- Sec. 36-T29N-R8W, San Juan Co., NM.

Ojo Alamo	2173	4279
Kirtland	2267	4186
Fruitland Fm.	2789	3663
Pictured Cliffs	3087	3365
Chacra	4030	2423
Cliffhouse	4703	1749
Menefee	4860	1592
Point Lookout	5179	1274
Gallup	6559	-106
Greenhorn	7246	-793
Graneros	7312	-859
Two Wells	7332	-879

PURE RESOURCES
 RINCON UNIT No. 231R, 1943 FSL 1595 FWL
 SECTION 12, T26N, R7W, N.M.P.M., RIO ARRIBA COUNTY, N. M.
 GROUND ELEVATION: 6506, DATE: MAY 16, 2001



NOTE: CONTRACTOR SHOULD CALL ONE-CALL FOR LOCATION OF ANY MARKED OR UNMARKED BURIED PIPELINES OR CABLES ON WELL PAD AND OR ACCESS ROAD AT LEAST TWO (2) WORKING DAYS PRIOR TO CONSTRUCTION.

DRAWN BY: B.L. ROW#: PR001 CADFILE: PR001CFB DATE: 11/01/00

Daggett Enterprises, Inc.
 Surveying and Oil Field Services
 P. O. Box 15068 Farmington, NM 87401
 Phone (505) 326-1772 Fax (505) 326-8019

REVISION: RELOCATION BY: A.G. DATE: 07/17/01
 REVISION: REMOVE DETAIL FROM PIT BY: B.L. DATE: 11/10/00