

District I
PO Box 1980, Hobbs, NM 88241-1980
District II
811 S. 1st Street, Artesia, NM 88210-2834
District III
1000 Rio Brazos Rd., Aztec, NM 87410
District IV
2040 South Pacheco, Santa Fe, NM 87505

State of New Mexico
Energy, Minerals & Natural Resources Department

OIL CONSERVATION DIVISION
2040 South Pacheco
Santa Fe, NM 87505

Form C-101
Revised October 18, 1994
Instructions on back
Submit to Appropriate District Office
State Lease - 6 Copies
Fee Lease - 5 Copies

☐ AMENDED REPORT

APPLICATION FOR PERMIT TO DRILL, RE-ENTER, DEEPEN, PLUGBACK, OR ADD A ZONE

¹ Operator name and Address ENERGEN RESOURCES CORPORATION 2198 Bloomfield Highway Farmington, NM 87401		² OGRID Number 162928
⁴ Property Code 21308	⁵ Property Name Lackey	³ API Number 30-0 15-30436
		⁶ Well No. 4R -

⁷ Surface Location									
UL or lot no.	Section	Township	Range	Lot. Idn	Feet from the	North/South Line	Feet from the	East/West line	County
G	19	29N	9W		2430	North	1765	East	San Juan

⁸ Proposed Bottom Hole Location If Different From Surface									
UL or lot no.	Section	Township	Range	Lot. Idn	Feet from the	North/South Line	Feet from the	East/West line	County
⁹ Proposed Pool 1 Aztec Pictured Cliffs					¹⁰ Proposed Pool 2				

¹¹ Work Type Code Drill	¹² Well Type Code Gas Well	¹³ Cable/Rotary Rotary	¹⁴ Lease Type Code Fee	¹⁵ Ground Level Elevation 5617' GL
¹⁶ Multiple No	¹⁷ Proposed Depth 2274'	¹⁸ Formation Pictured Cliffs	¹⁹ Contractor UKN	²⁰ Spud Date 12/15/00

²¹ Proposed Casing and Cement Program					
Hole Size	Casing Size	Casing weight/foot	Setting Depth	Sacks of Cement	Estimated TOC
12 1/4	9 5/8	32 3#	200'	130 cu. ft.	Circ.
7-7/8	4-1/2	10 5#	2274'	778 cu. ft.	Circ.

²² Describe the proposed program. If this application is to DEEPEN or PLUG BACK give the data on the present productive zone and proposed new productive zone. Describe the blowout prevention program, if any. Use additional sheets if necessary

An 11" 2000# minimum double gate BOP stack will be used with a 2" 2000# choke manifold.
The Pictured Cliffs will be selectively perforated and sand water fractured.
This gas is dedicated.

²³ I hereby certify that the information given above is true and complete to the best of my knowledge and belief.

Signature:

Don Graham

Printed name: Don Graham

Title: Drilling & Completion Foreman

OIL CONSERVATION DIVISION

Approved by:

Title:

DEPUTY OIL & GAS INSPECTOR, DIST. #3

Approval Date:

NOV 28, 2000

Expiration Date:

NOV 28, 2001

HOLD COPY FOR *State's change to Lackey #4*

District I
PO Box 1980, Hobbs, NM 88241-1980

State of New Mexico
Energy, Minerals & Natural Resources Department

Form C-102

Revised February 21, 1994

District II
PO Drawer DD, Artesia, NM 88211-0719

OIL CONSERVATION DIVISION
PO Box 2088
Santa Fe, NM 87504-2088

Instructions on back
Submit to Appropriate District Office
State Lease - 4 Copies
Fee Lease - 3 Copies

District III
1000 Rio Brazos Rd., Aztec, NM 87410

District IV
PO Box 2088, Santa Fe, NM 87504-2088

☐ AMENDED REPORT

WELL LOCATION AND ACREAGE DEDICATION PLAT

*API Number 30-045-30436		*Pool Code 71280	*Pool Name Aztec Pictured Cliffs
*Property Code 21308	*Property Name LACKEY		*Well Number 4R
*GRID No. 162928	*Operator Name ENERGEN RESOURCES CORPORATION		*Elevation 5617

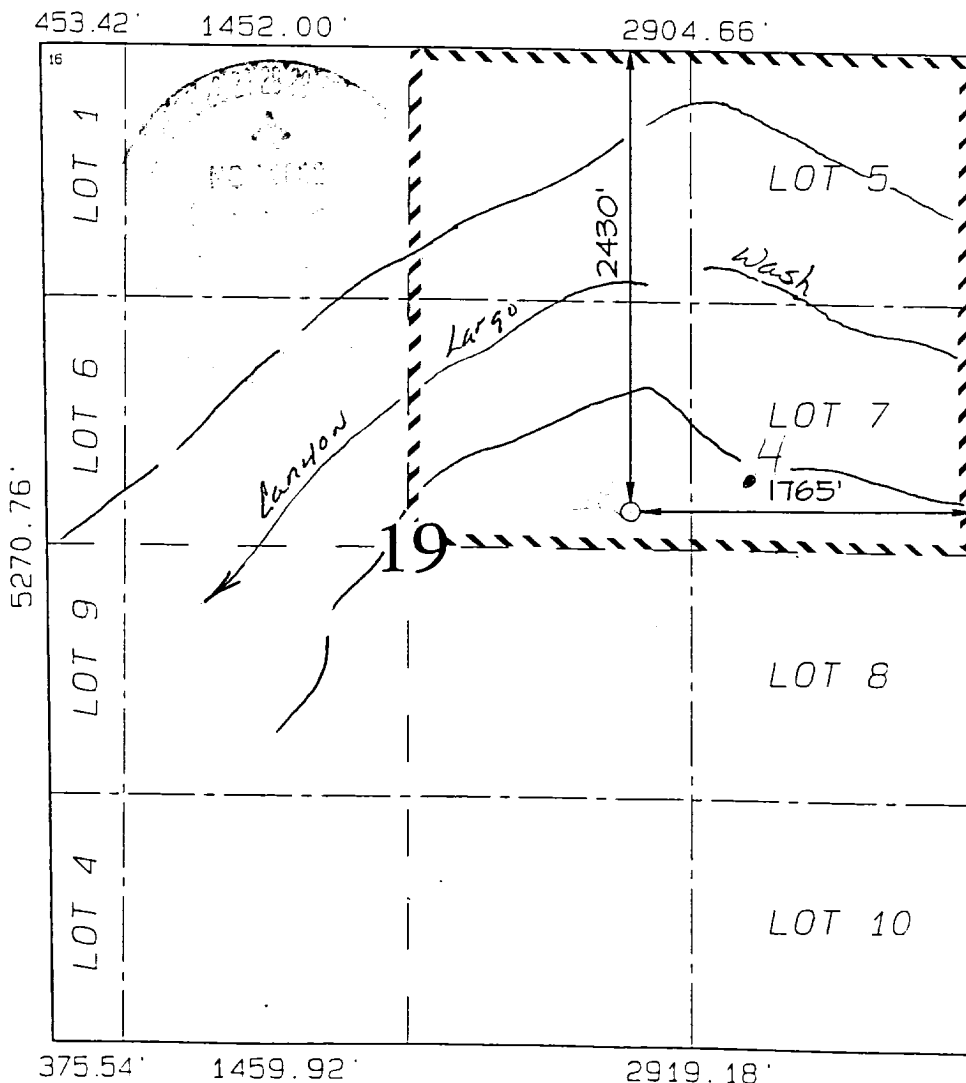
¹⁰ Surface Location

UL or lot no.	Section	Township	Range	Lot Idn	Feet from the	North/South line	Feet from the	East/West line	County
G	19	29N	9W		2430	NORTH	1765	EAST	SAN JUAN

¹¹ Bottom Hole Location If Different From Surface

UL or lot no.	Section	Township	Range	Lot Idn	Feet from the	North/South line	Feet from the	East/West line	County

¹² Dedicated Acres NE-167.85	¹³ Joint or Infill	¹⁴ Consolidation Code	¹⁵ Order No
---	-------------------------------	----------------------------------	------------------------



NO ALLOWABLE WILL BE ASSIGNED
TO THIS COMPLETION UNTIL ALL
INTERESTS HAVE BEEN CONSOLIDATED
OR A NON-STANDARD UNIT HAS
BEEN APPROVED BY THE DIVISION

¹⁷ OPERATOR CERTIFICATION

I hereby certify that the information contained herein is true and complete to the best of my knowledge and belief

[Signature]
Signature

Gary Brink
Printed Name

Production Superintendant
Title

11/15/00
Date

¹⁸ SURVEYOR CERTIFICATION

I hereby certify that the well location shown on this plat was plotted from field notes of actual surveys made by me or under my supervision and that the same is true and correct to the best of my belief

OCTOBER 24, 2000
Date of Survey

[Signature]
Signature and Seal of Surveyor

NEALE G. EDWARDS
NEW MEXICO
6857
REGISTERED PROFESSIONAL SURVEYOR
Certificate 6857