

NEW MEXICO OIL CONSERVATION COMMISSION  
Santa Fe, New Mexico

## NOTICE OF INTENTION TO DRILL OR RECOMPLETE

Notice must be given to the District Office of the Oil Conservation Commission and approval obtained before drilling or recompletion begins. If changes in the proposed plan are considered advisable, a copy of this notice showing such changes will be returned to the sender. Submit this notice in QUINTUPPLICATE. One copy will be returned following approval. See additional instructions in Rules and Regulations of the Commission.

If State Land submit 6 Copies

Farmington, New Mexico

(Place)

November 8, 1955

(Date)

OIL CONSERVATION COMMISSION  
SANTA FE, NEW MEXICO

Gentlemen:

You are hereby notified that it is our intention to commence the (Drilling) (Recompletion) of a well to be known as

Pacific Northwest Pipeline Corporation

(Company or Operator)

(Lease) \_\_\_\_\_, Well No. 13-32, in 30-6 The well is  
(Unit)located 1500 feet from the North line and 1600 feet from theEast line of Section 32, T. 30N, R. 6W, NMPM.(GIVE LOCATION FROM SECTION LINE) B. lance Pool, Rio Arriba CountyIf State Land the Oil and Gas Lease is No. E-347

If patented land the owner is \_\_\_\_\_

Address \_\_\_\_\_

We propose to drill well with drilling equipment as follows: Rotary from 0-6135

The status of plugging bond is \_\_\_\_\_

Drilling Contractor \_\_\_\_\_

We intend to complete this well in the Mesa Verdeformation at an approximate depth of 6100 feet.

## CASING PROGRAM

We propose to use the following strings of Casing and to cement them as indicated:

Size of Hole	Size of Casing	Weight per Foot	New or Second Hand	Depth	Sacks Cement
<u>15"</u>	<u>10-3/4"</u>	<u>32.75</u>	<u>New</u>	<u>250</u>	<u>125 Sx 4%</u>
<u>9-7/8"</u>	<u>7-5/8"</u>	<u>26.40</u>	<u>New</u>	<u>3834</u>	<u>150 Sx 8%</u>
<u>6-3/4"</u>	<u>5-1/2"</u>	<u>14</u>	<u>New</u>	<u>6135</u>	<u>125 Sx 4%</u>

If changes in the above plans become advisable we will notify you immediately.

ADDITIONAL INFORMATION (If recompletion give full details of proposed plan of work.)

To perf & Sand Frac Monafee, Point Lookout & Cliff House separately, each w/ 40,000 gal water w/ approx. 1 1/2 sd/gal.

320 Acres dedicated to this well.

Approved 11-16, 1955  
Except as follows:

OIL CONSERVATION COMMISSION

By Ernest C. Lunt  
Title Oil and Gas Inspector Dist. 13

Sincerely yours,

PACIFIC NORTHWEST PIPELINE CORPORATION

(Company or Operator)

By J. A. RuganPosition District Engineer

Send Communications regarding well to

Name Pacific Northwest Pipeline Corp.Address 413 1/2 West Main St.,Farmington, New Mexico

Company PACIFIC NORTHWEST PIPELINE CORPORATION

Lease..... Well No.....

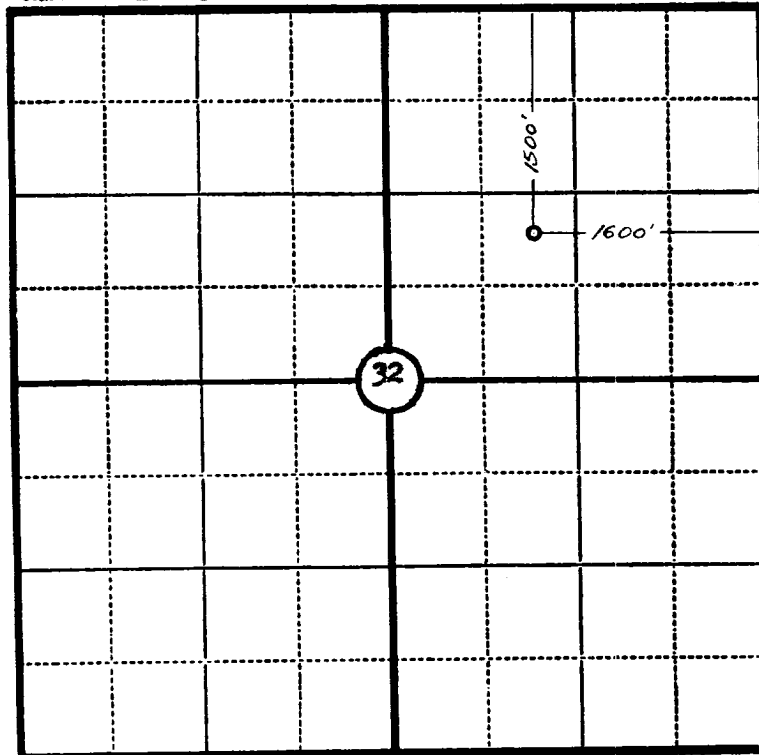
Sec. 32, T. 30 N., R. 6 W., N.M.P.M.

Location 1500' FROM THE NORTH LINE AND 1600' FROM THE EAST LINE.

Elevation 6842.0 UNGRADED GROUND.

RIO ARriba COUNTY

NEW MEXICO



Scale—4 inches equal 1 mile.

This is to certify that the above plat was prepared from field notes of actual surveys made by me or under my supervision and that the same are true and correct to the best of my knowledge and belief.

Seal:

*James P. Lease*

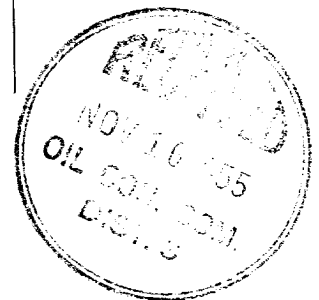
Registered Land Surveyor.

James P. Lease

N.Mex. Reg. No. 1463

Surveyed 7 July, 1955

SAN JUAN ENGINEERING COMPANY, FARMINGTON, N. M.



Total number of specimens		Number of specimens
1	6	
2	1	
3	1	
4	1	
5	2	
6	1	✓