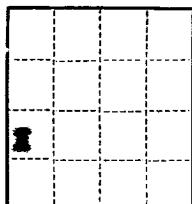


1-3, 3, 3, 3.  
1-2. E. Johnston  
1-File

Budget Bureau 42-R358.2.  
Approval expires 12-31-52.



(SUBMIT IN TRIPLICATE)

UNITED STATES  
DEPARTMENT OF THE INTERIOR  
GEOLOGICAL SURVEY

Land Office Santa Fe New Mexico  
Lease No. 577853-012709  
Unit San Juan 30-6 Unit  
14-05-001-130

SUNDRY NOTICES AND REPORTS ON WELLS

NOTICE OF INTENTION TO DRILL	<input checked="" type="checkbox"/>	SUBSEQUENT REPORT OF WATER SHUT-OFF	
NOTICE OF INTENTION TO CHANGE PLANS		SUBSEQUENT REPORT OF SHOOTING OR ACIDIZING	
NOTICE OF INTENTION TO TEST WATER SHUT-OFF		SUBSEQUENT REPORT OF ALTERING CASING	
NOTICE OF INTENTION TO RE-DRILL OR REPAIR WELL		SUBSEQUENT REPORT OF RE-DRILLING OR REPAIR	
NOTICE OF INTENTION TO SHOOT OR ACIDIZE		SUBSEQUENT REPORT OF ABANDONMENT	
NOTICE OF INTENTION TO PULL OR ALTER CASING		SUPPLEMENTARY WELL HISTORY	
NOTICE OF INTENTION TO ABANDON WELL			

**RECEIVED**  
JUN 24 1955  
U. S. GEOLOGICAL SURVEY  
FARMINGTON, NEW MEXICO

(INDICATE ABOVE BY CHECK MARK NATURE OF REPORT, NOTICE, OR OTHER DATA)

June 23, 1955

Well No. 7-30 is located 1470 ft. from 30E line and 1075 ft. from NE line of sec. 30  
NE  
30E Sec. 30 30E 7E E.M.P.M.  
(1/4 Sec. and Sec. No.) (Twp.) (Range) (Meridian)  
New Mexico San Juan New Mexico  
(Field) (County or Subdivision) (State or Territory)

The elevation of the surface above sea level is 6264.49 ft.

DETAILS OF WORK

(State names of and expected depths to objective sands; show sizes, weights, and lengths of proposed casings; indicate mudding jobs, cementing points, and all other important proposed work)

Propose to drill 15" hole to 200' and set 10-3/4" casing at that point, cementing w/ 200 sacks 45 gal cement. Drill w/ mud to approximately 3170', set and cement 7-5/8" OD casing w/ 300 sacks 45 gal cement. Then drill w/ gas to approximately 5150', set and cement 5-1/2" OD casing w/ 150 sacks 45 gal cement. Drill 4-1/4" hole w/ gas to approximately 5400', and sand first treat the Point Lookout open hole w/ 10,000 gal treatment and test. Perforate casing opposite the Huerfano, treat w/ 10,000 gal treatment and test, then perforate opposite the Cliffhouse formation, treat w/ 10,000 gal treatment and test, Run 2-1/2" tubing and complete.

I understand that this plan of work must receive approval in writing by the Geological Survey before operations may be commenced.

Company PACIFIC NORTHWEST PIPELINE CORPORATION

Address 413-1/2 W. Main

Farmington, New Mexico

By J. A. Muga

Title Engineer



1. The first part of the document is a letter from the President of the United States to the Congress, dated January 3, 1862. It is a very important document, as it contains the President's annual message to Congress. The letter is written in a formal, official style, and it is signed by the President.

2. The second part of the document is a report from the Secretary of the Treasury, dated January 3, 1862. It is a very important document, as it contains the Secretary's annual report to Congress. The report is written in a formal, official style, and it is signed by the Secretary.

3. The third part of the document is a report from the Secretary of the Interior, dated January 3, 1862. It is a very important document, as it contains the Secretary's annual report to Congress. The report is written in a formal, official style, and it is signed by the Secretary.

4. The fourth part of the document is a report from the Secretary of the War, dated January 3, 1862. It is a very important document, as it contains the Secretary's annual report to Congress. The report is written in a formal, official style, and it is signed by the Secretary.

5. The fifth part of the document is a report from the Secretary of the Navy, dated January 3, 1862. It is a very important document, as it contains the Secretary's annual report to Congress. The report is written in a formal, official style, and it is signed by the Secretary.

Company.....PACIFIC NORTHWEST PIPELINE CORPORATION

Lease.....Well No.....

Sec.....30....., T.....30 N....., R.....7 W..... N.M.P.M.

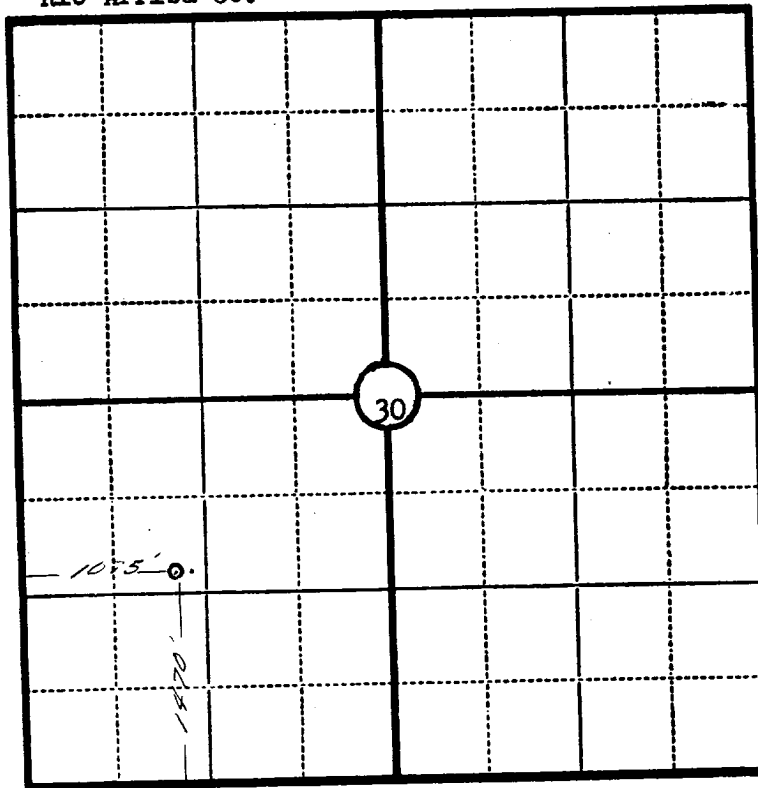
Location.....1470' from the Southb. line and  
1075' from the West line.

Elevation.....6266.69 Ungraded ground

RECEIVED  
JUN 24 1955  
U. S. GEOLOGICAL SURVEY  
FARMINGTON, NEW MEXICO

Rio Arriba Co.

New Mexico



Scale—4 inches equal 1 mile.

This is to certify that the above plat was prepared from field notes of actual surveys made by me or under my supervision and that the same are true and correct to the best of my knowledge and belief.

Seal:

*James P. Lease*

Registered

Land Surveyor. N.M. Reg. No. 1463

Surveyed June 21, 1955