



Company Baron Kidd

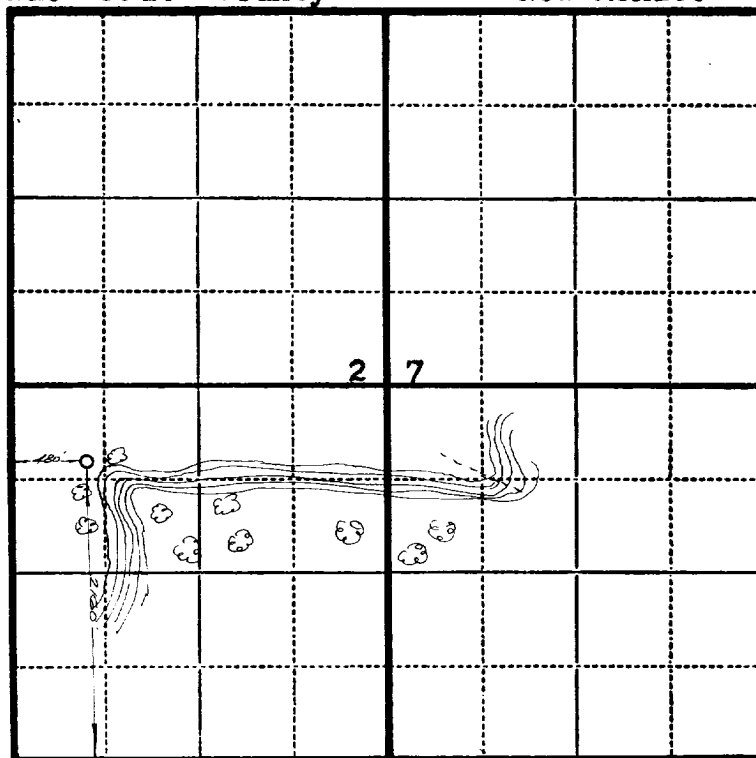
Lease \_\_\_\_\_ Well No. \_\_\_\_\_

Sec. 27 T. 30 N. R. 6 W., N.M.P.M.

Location 2160' from the South line and 480'  
from the West line.

Rio Arriba County

New Mexico



Scale—4 inches equals 1 mile.

This is to certify that the above plat was prepared from field notes of actual surveys made by me or under my supervision and that the same are true and correct to the best of my knowledge and belief.

*Charles J. Finklea*

Seal:

Registered Professional **Charles J. Finklea**  
Engineer and Land Surveyor. **N. Mex. Reg. No. 1302**

Surveyed September 25, 1951