

submitted in lieu of Form 3160-5

UNITED STATES  
DEPARTMENT OF THE INTERIOR  
BUREAU OF LAND MANAGEMENT

RECEIVED

Sundry Notices and Reports on Wells

1. Type of Well  
GAS

2. Name of Operator

**BURLINGTON  
RESOURCES**

OIL & GAS COMPANY

3. Address & Phone No. of Operator

PO Box 4289, Farmington, NM 87499 (505) 326-9700

4. Location of Well, Footage, Sec., T, R, M

1580' FNL 1150' FEL, Sec. 29, T-30-N, R-6-W, NMPM

5. Lease Number  
SF-080712-A

6. If Indian, All. or  
Tribe Name

7. Unit Agreement Name  
San Juan 30-6 Unit

8. Well Name & Number  
San Juan 30-6 U#55

9. API Well No.  
30-039-07766

10. Field and Pool  
Blanco Mesaverde

11. County and State  
Rio Arriba Co, NM

12. CHECK APPROPRIATE BOX TO INDICATE NATURE OF NOTICE, REPORT, OTHER DATA

Type of Submission

☒ Notice of Intent  
☐ Subsequent Report  
☐ Final Abandonment

Type of Action

☐ Abandonment ☐ Change of Plans  
☐ Recompletion ☐ New Construction  
☐ Plugging Back ☐ Non-Routine Fracturing  
☐ Casing Repair ☐ Water Shut off  
☐ Altering Casing ☐ Conversion to Injection  
☒ Other -

13. Describe Proposed or Completed Operations

It is intended to add Lewis pay to the Mesaverde formation of the subject well according to the attached procedure and wellbore diagram.

14. I hereby certify that the foregoing is true and correct.

Signed [Signature] Title Regulatory Administrator Date 1/29/99

(This space for Federal State Office use)

APPROVED BY AS/Diane W. Spencer Title \_\_\_\_\_ Date \_\_\_\_\_

CONDITION OF APPROVAL, if any:

Title 18 U.S.C. Section 1001, makes it a crime for any person knowingly and willfully to make to any department or agency of the United States any false, fictitious or fraudulent statements or representations as to any matter within its jurisdiction.

(E)

NMOCD

FEB - 8 1999

San Juan 30-6 #55  
Lewis Shale Payadd Procedure  
H 29 30N 06W  
San Juan County, NM  
Latitude: 36 Deg., 47.19 Min  
Longitude: 107 Deg., 28.84 Min.

**Summary:**

The subject well is a 1999 Lewis Shale payadd in 7-5/8" and 5-1/2" casing. This well was drilled in 1958 and was completed in the Point Lookout, Cliffhouse and Menefee intervals. The Pt. Lookout/ Menefee interval was stimulated w/ approximately 60,000 lbs. total sand and 62,216 gal. total slickwater. The Cliffhouse interval was stimulated w/ approximately 45,000 lbs. total sand and 54,000 gal. total slickwater and placed on production. The Lewis will be perforated and fracture stimulated in two (2) stages with 269 total tons of liquid CO<sub>2</sub> and 95,000 lbs. total 40/70 mesh sand. The new stimulation technique will test the viability of a liquid CO<sub>2</sub> and sand stimulation within the Lewis Shale interval. The well will then be cleaned-up, tubing and rods landed in the Mesaverde and placed on production.

Comply to all NMOCD, BLM and BR regulations. Conduct daiy safety meetings for all personnel on location. Notify BR regulatory (Peggy Bradfield 326-9727) and the appropriate Regulatory Agency prior to pumping any cement job and after CBL is run. If an unplanned cement job is required, approval is required before the job can be pumped. If verbal approval is obtained, document the approval in Dims. Allow adequate notice prior to the pump time for the Agency to witness the cementing operation.

- Inspect location and wellhead and install rig anchors prior to rig move.
- Construct blow pit.
- **DURING CO<sub>2</sub> STIMULATION, ONLY AUTHORIZED PERSONNEL ARE ALLOWED ON LOCATION. ONLY CO<sub>2</sub> EXPERIENCED AND APPROVED STIMULATION PERSONNEL AND PUMP EQUIPMENT ARE ALLOWED ON LOCATION.**

1. MOL, hold safety meeting and RU completion rig. RD pumping unit. Insure all safety equipment is strategically located and functioning properly. NU relief lines to blow pit. Set one (1) 400 BBL frac tank and fill w/ 2% KCL. Blow well down and kill well w/ 2% KCL water as necessary. ND wellhead and NU 7-1/16" 3M BOP, stripping head and blobie line. Operationally test BOP.
2. TOOH w/ approximately 178 jts. 2-3/8" Mesaverde tubing set at +/- 5521' and stand back. Inspect tubing and replace bad tubing as necessary\*\*.

**\*\*NOTE:** If existing tbg. is scaled-up, contact production engineer and a scale analysis will be run. This will determine if we will pump acid down the 2-3/8" 4.7# J-55 workstring and acid wash perforations across the Point Lookout and Cliffhouse interval.

3. RU wireline. RIH w/ 5-1/2" gauge ring and check wellbore for obstructions to PBTD @ 5578'. POOH.\*\*

**\*\*NOTE:** If obstructions are encountered, PU 4-3/4" bit and 5-1/2" 15.5# csg. scraper on 2-3/8" 4.7# J-55 workstring and CO to PBTD @ 5578'. TOOH

4. TIH w/ 5-1/2" CIBP, on/off tool, 5-1/2" fullbore pkr and approximately 153 jts. 2-3/8" 4.7# J-55 workstring and tubing set CIBP @ +/- 4750'. Load hole down tubing w/ 35 bbls 2% KCL for logging and perforating. Set pkr @ +/- 3340'. RU wireline w/ packoff and pump in tee. RIH w/ slimhole GR\CCL\CBL and log from 4750' to 3800'\*\*. TOOH w/ slimhole GR\CCL\CBL logging tool. RIH w/ TDT logging tool and log from 4750' to 3800'\*\*. TOOH w/ TDT logging tool. RU stimulation company. Pressure test surface lines to 4800 psi and pressure test CIBP to 3800 psi (80% of burst of 5-1/2" 15.5# csg). RD stimulation company. Release pkr and TOOH w/ workstring and pkr.

\*\* Correlate to Elec. log.

San Juan 30-6 #55  
Lewis Shale Payadd Procedure  
H 29 30N 06W  
San Juan County, NM  
Latitude: 36 Deg., 47.19 Min  
Longitude: 107 Deg., 28.84 Min.

**1<sup>st</sup> Stage – Lower Lewis Shale**

5. RIH w/ CCL on top of perforating guns\*\*. Perforate the Lower Lewis Shale interval with **3-1/2" HPG gun system w/ 37J UJ HMX charges**. These are 34 gram charges with a 0.46" hole and 34.0" penetration. Shoot 130 holes bottom up in two (2) gun runs @ **2 SPF 60° Phase** in 2% KCL at the following depths: **1<sup>st</sup> gun run** – 10' gun @ **4490'-4480'\*\*\***, 10' gun @ **4412'-4402'\*\*\***, 10' gun @ **4390'-4380'\*\*\***, **2<sup>nd</sup> gun run** – 10' gun @ **4312'-4302'\*\*\***, 10' gun @ **4268'-4258'\*\*\***, 5' gun @ **4235'-4230'\*\*\***, 10' gun @ **4165'-4155'\*\*\***. RD wireline company.

\*\* NOTE: Tie into new TDT log.

**\*\*\*NOTE: Perforation intervals may change after review of the TDT log. Contact Steve Campbell, Hans Dube, or Glen Christiansen for final perforation intervals.**

6. TIH w/ 5-1/2" fullbore pkr and 130 jts. 2-3/8" 4.7# J-55 workstring and set @ +/- **4050'**. RU stimulation company. Pressure test surface lines to **4800 psi**. Breakdown perforations @ 5-6 BPM w/ tbg. volume of 2% KCL (approximately 15 BBL). Displace w/ 300 gal. of 10% Acetic Acid + 5% NH<sub>4</sub>CL\*\* dropping one-hundred sixty-nine (169) 7/8" 1.1 SG RCN balls evenly displaced through acid. Displace acid w/ approximately 26 BBL of 2% KCL to bottom perforation. Balloff to maximum pressure of **3800 psi** (80% of burst in 5-1/2" 15.5# csg). Record breakdown pressure, ball action and ISIP. Release pkr and knock ball off of perforations.

\*\* All Acid to contain the following additives/ 1000 gal:

1000 gal	10%	Acetic Acid
2 gal	MSA II	corrosion inhibitor
5%	NH <sub>4</sub> CL	clay control

7. TOOH w/ 5-1/2" fullbore pkr and approximately 130 jts. 2-3/8" 4.7# J-55 workstring. Stand back workstring and laydown pkr.
8. Pick-up 5-1/2" fullbore Model **Arrowset 1X 10K COMPRESSION SET** pkr, 2 jts. 2-7/8" N-80 EUE 8rd, 2-7/8 EUE 8rd X 3-1/2" 8rd changeover swage and 105 jts. 3-1/2" 9.3# N-80 fracstring. Set pkr @ +/- **3340'**. (Refer to tubing movement calculation enclosed. This will determine how much shrinkage will occur in tubulars.)
9. RU stimulation company to frac down fracstring and 4" frac valve. Hold pre-job safety meeting with all personnel on location. Pressure test surface lines to **9000 psi** prior to stimulation.\*\*

**\*\*NOTE: HAVE PRE-JOB SAFETY MEETING WITH ALL PERSONNEL ON LOCATION. USE CO<sub>2</sub> APPROVED PUMPING EQUIPMENT ONLY. REVIEW CONTINGENCY PLANS FOR POSSIBLE JOB MALFUNCTIONS WITH ALL PERSONNEL.**

10. Fracture stimulate in 0.6 to 3.0 ppg stages @ 35 BPM constant downhole rate with 135 tons of Liquid CO<sub>2</sub> and 47,500 lbs. 40/70 mesh sand. When enclosed blender is empty, call flush. Flush to top perf @ +/- **4155'** with Liquid CO<sub>2</sub>. Refer to frac schedule enclosed. Maximum bottomhole treating pressure is **3800 psi** (80% of burst in 5-1/2" 15.5# csg). Estimated friction pressure is approximately **5466 psi @ 35 BPM**. Maximum surface treating pressure is **8000 psi**. **Leave csg. valve open and monitor annulus pressure in treating van.**

San Juan 30-6 #55  
Lewis Shale Payadd Procedure  
H 29 30N 06W  
San Juan County, NM  
Latitude: 36 Deg., 47.19 Min  
Longitude: 107 Deg., 28.84 Min.

11. Record ISIP, 5, 10 and 15 shut-in pressure. Shut-in frac valve. RD stimulation company. Install flowback line above frac valve. Lay flowback line to dual-choke manifold and pit. Begin flowback after stimulation company has rigged down from frac valve. Open well to pit on accordance to flowback schedule listed in the table below. Do not shut well in during flowback. When schedule dictates a larger choke size, open ball valve upstream of adjustable choke and open adjustable choke on manifold to pre-determined size listed in table and begin flowing through adjustable choke. Close ball valve upstream of positive flow bean and change out flow bean to next larger size in table. Open ball valve upstream of positive flow bean and begin flowing. Close ball valve upstream of adjustable choke and close adjustable choke.

16/64" Choke	From Shut-in to 900 psi
20/64" Choke	From 900 psi to 750 psi
24/64" Choke	From 750 psi to 600 psi
32/64" Choke	From 600 psi to 400 psi
48/64" Choke	From 400 psi to 100 psi

12. After well cleans up and pressures allow, release pkr and TOOH standing back 105 jts. 3-1/2" 9.3# N-80, 3-1/2" 8rd X 2-7/8" EUE 8rd changeover swage, 2 jts. 2-7/8" N-80 EUE 8rd frac string and 5-1/2" pkr.

**2<sup>nd</sup> Stage – Upper Lewis Shale**

13. TIH w/ 5-1/2" CIBP, on/off tool, 5-1/2" fullbore pkr and approximately 132 jts. 2-3/8" 4.7# J-55 workstring and tubing set CIBP @ +/- 4120'. Load hole down tubing w/ 18 bbls 2% KCL for perforating. Set pkr @ +/- 3340'. RU stimulation company. Pressure test surface lines to 4800 psi and pressure test CIBP to 3800 psi (80% of burst of 5-1/2" 15.5# csg). RD stimulation company. Release pkr and TOOH w/ workstring and pkr.
14. RIH w/ CCL on top of perforating guns\*\*. Perforate the Upper Lewis Shale interval with 3-1/2" HPG gun system w/ 37J UJ HMX charges. These are 34 gram charges with a 0.46" hole and 34.0" penetration. Shoot 80 holes bottom up in two (2) gun runs @ 2 SPF 60° Phase in 2% KCL at the following depths: 1<sup>st</sup> gun run - 10' gun @ 4050'-4040'\*\*\*, 10' gun @ 4030'-4020'\*\*\*, 2<sup>nd</sup> gun run - 10' gun @ 4000'-3990'\*\*\*, 10' gun @ 3945'-3935'\*\*\*. RD wireline company.

\*\* NOTE: Tie into new TDT log.

\*\*\*NOTE: Perforation intervals may change after review of the TDT log. Contact Steve Campbell, Hans Dube, or Glen Christiansen for final perforation intervals.

15. TIH w/ 5-1/2" fullbore pkr and 123 jts. 2-3/8" 4.7# J-55 workstring and set @ +/- 3835'. RU stimulation company. Pressure test surface lines to 4800 psi. Breakdown perforations @ 5-6 BPM w/ tbq. volume of 2% KCL (approximately 15 BBL). Displace w/ 300 gal. of 10% Acetic Acid + 5% NH<sub>4</sub>CL\*\* dropping one-hundred four (104) 7/8" 1.1 SG RCN balls evenly displaced through acid. Displace acid w/ approximately 20 BBL of 2% KCL to bottom perforation. Balloff to maximum pressure of 3800 psi (80% of burst in 5-1/2" 15.5# csg). Record breakdown pressure, ball action and ISIP. Release pkr and knock ball off of perforations.

\*\* All Acid to contain the following additives/ 1000 gal:

1000 gal	10%	Acetic Acid
2 gal	MSA II	corrosion inhibitor
5%	NH <sub>4</sub> CL	clay control

**San Juan 30-6 #55**  
**Lewis Shale Payadd Procedure**  
**H 29 30N 06W**  
**San Juan County, NM**  
**Latitude: 36 Deg., 47.19 Min**  
**Longitude: 107 Deg., 28.84 Min.**

16. TOOH w/ 5-1/2" fullbore pkr and approximately 123 jts. 2-3/8" 4.7# J-55 workstring. Stand back workstring and laydown pkr.
17. Pick-up 5-1/2" fullbore Model **Arrowset 1X 10K COMPRESSION SET** pkr, 2 jts. 2-7/8" N-80 EUE 8rd, 2-7/8 EUE 8rd X 3-1/2" 8rd changeover swage and 105 jts. 3-1/2" 9.3# N-80 fracstring. Set pkr @ +/- **3340'**. (Refer to tubing movement calculation enclosed. This will determine how much shrinkage will occur in tubulars.)
18. RU stimulation company to frac down fracstring and 4" frac valve. Hold pre-job safety meeting with all personnel on location. Pressure test surface lines to **9000 psi** prior to stimulation.\*\*

**\*\*NOTE: HAVE PRE-JOB SAFETY MEETING WITH ALL PERSONNEL ON LOCATION. USE CO<sub>2</sub> APPROVED PUMPING EQUIPMENT ONLY. REVIEW CONTINGENCY PLANS FOR POSSIBLE JOB MALFUNCTIONS WITH ALL PERSONNEL.**

19. Fracture stimulate in 0.6 to 3.0 ppg stages @ 35 BPM constant downhole rate with 134 tons of Liquid CO<sub>2</sub> and 47,500 lbs. 40/70 mesh sand. When enclosed blender is empty, call flush. Flush to top perf @ +/- **3935'** with Liquid CO<sub>2</sub>. Refer to frac schedule enclosed. Maximum bottomhole treating pressure is **3800 psi** (80% of burst in 5-1/2" 15.5# csg). Estimated friction pressure is approximately **5272 psi @ 35 BPM**. Maximum surface treating pressure is **8000 psi**. **Leave csg. valve open and monitor annulus pressure in treating van.**
20. Record ISIP, 5, 10 and 15 shut-in pressure. Shut-in frac valve. RD stimulation company. Install flowback line above frac valve. Lay flowback line to dual-choke manifold and pit. Begin flowback after stimulation company has rigged down from frac valve. Open well to pit on accordance to flowback schedule listed in the table below. Do not shut well in during flowback. When schedule dictates a larger choke size, open ball valve upstream of adjustable choke and open adjustable choke on manifold to pre-determined size listed in table and begin flowing through adjustable choke. Close ball valve upstream of positive flow bean and change out flow bean to next larger size in table. Open ball valve upstream of positive flow bean and begin flowing. Close ball valve upstream of adjustable choke and close adjustable choke.

<b>16/64" Choke</b>	<b>From Shut-in to 900 psi</b>
<b>20/64" Choke</b>	<b>From 900 psi to 750 psi</b>
<b>24/64" Choke</b>	<b>From 750 psi to 600 psi</b>
<b>32/64" Choke</b>	<b>From 600 psi to 400 psi</b>
<b>48/64" Choke</b>	<b>From 400 psi to 100 psi</b>


21. After well cleans up and pressures allow, release pkr and TOOH laying down 105 jts. 3-1/2" 9.3# N-80, 3-1/2" 8rd X 2-7/8" EUE 8rd changeover swage, 2 jts. 2-7/8" N-80 EUE 8rd frac string and 5-1/2" pkr.
22. TIH w/ 4-3/4" flat mill on 2-3/8" 4.7# J-55 workstring and clean-up to CIBP @ +/- **4120'** with air/mist. When well is sufficiently clean, gauge the Upper Lewis interval for one (1) hour. Obtain an accurate pitot gauge for the Upper Lewis interval.
23. Drill out CIBP @ +/- **4120'** w/ 4-3/4" flat mill on 2-3/8" workstring. Use minimum mist rate of 10-12 BPH.
24. Clean up to CIBP @ +/- **4750'** w/ air/mist. When well is sufficiently clean, gauge the entire Lewis interval for one (1) hour.

San Juan 30-6 #55  
Lewis Shale Payadd Procedure  
H 29 30N 06W  
San Juan County, NM  
Latitude: 36 Deg., 47.19 Min  
Longitude: 107 Deg., 28.84 Min.

25. Drill out CIBP @ +/- 4750' w/ 4-3/4" flat mill on 2-3/8" workstring w/ air/mist and CO to PBTD @ 5578\*\*\* TOOH w/ 2-3/8" 4.7# J-55 workstring and stand back. Lay down 4-3/4" flat mill.

**\*\*NOTE:** If tbg. was scaled-up, acid wash the existing Cliffhouse and Point Lookout perforations w/ treatment specified by service company.

26. Broach in tubing on sandline. TIH w/ one joint of 2-3/8" 4.7# J-55 tubing w/ expendable check, seating nipple, then remaining 2-3/8" production tubing. Land tubing @ 5480'.
27. ND BOP's, NU single tubing hanger wellhead. Pump off expendable check. Obtain a final pitot up tubing. If well will not flow on it's own, make swab run to seating nipple. If swab run is not necessary, RD and MOL.

Approve:  12/17/98  
Team Leader

Approve:  1/11/99  
Drilling Superintendent

Recommend:  12/17/98  
Production Engineer

VENDORS:

Wireline:	Schlumberger	325-5006
Stimulation:	Halliburton	324-3500
Enclosed Blender:	Universal Resources	1-800-935-2837
Liquid CO <sub>2</sub> :	BOC Gases	1-800-448-5988
Packer:	Arrow Completion Systems	326-5141
Bridge Plug:	Arrow Completion Systems	326-5141
Flat Mill:	Arrow Completion Systems	326-5141

Steve Campbell Home 325-8218  
Glen Christiansen Home 327-5089  
Hans Dube Home 564-9401

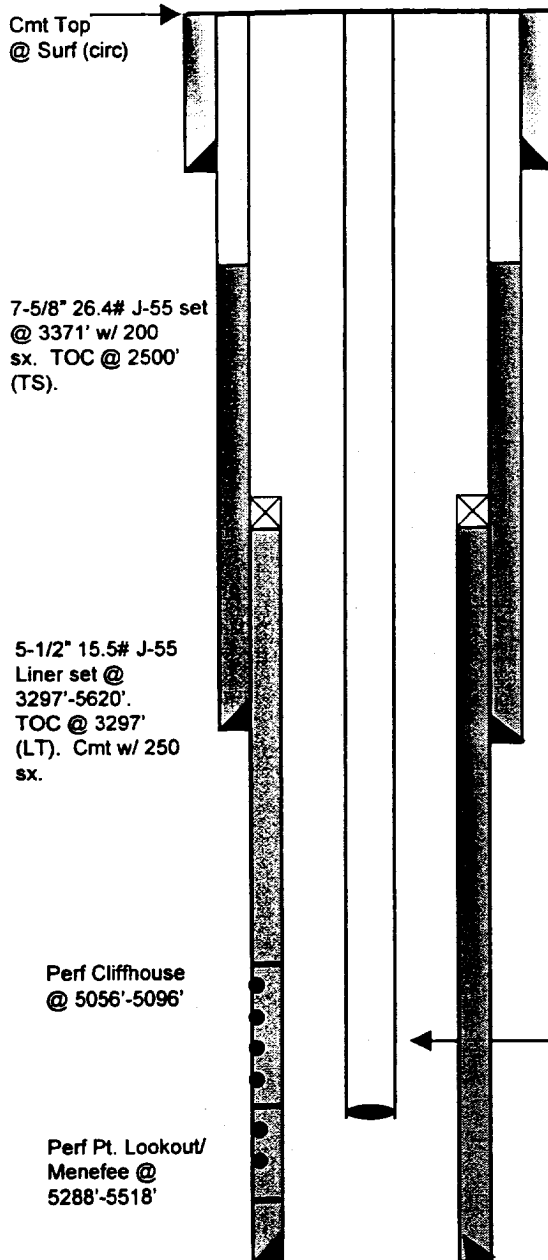
Office 326-9546 Pager 564-1902  
Office 326-9733 Pager 324-7562  
Office 326-9555

# San Juan 30-6 #55

Unit H, Section 29, T30N, R06W  
Rio Arriba County, NM

Current Schematic

Proposed Schematic



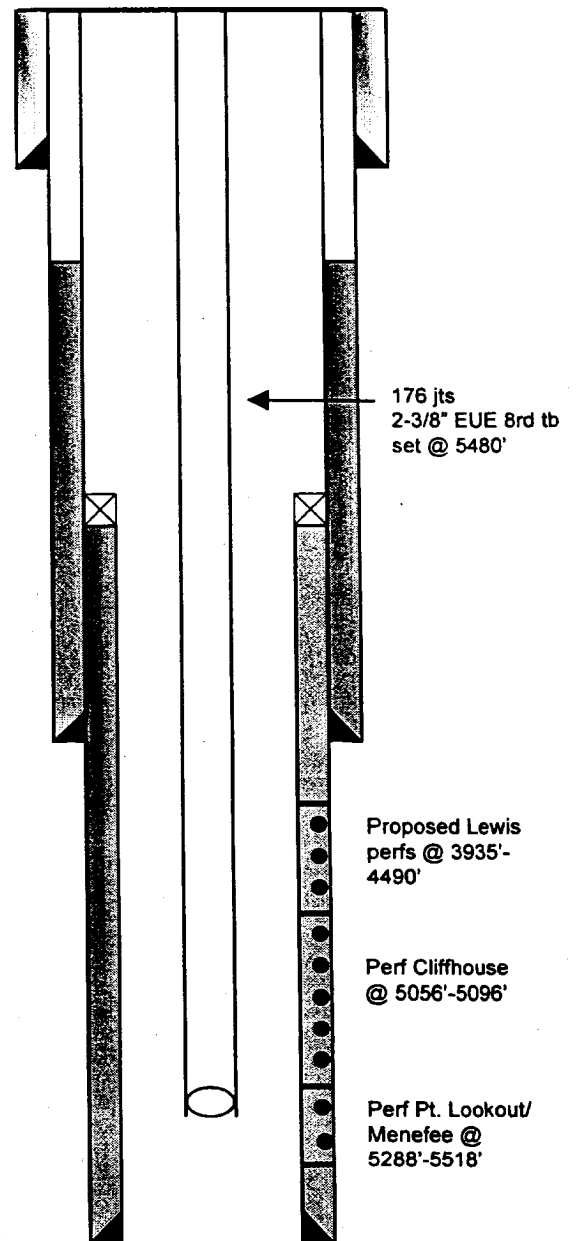
10-3/4" Csg.  
Set at 172'.  
Cmt'd with  
150 sx.

Formation Tops at:

Ojo Alamo	2205'
Pictured Cliffs	3224'
H. Bentonite	3888'
U. Cliffhouse	4753'
M. Cliffhouse	5062'
Menefee	5140'
Pt. Lookout	5368'

178 JTS. 2-3/8" EUE 8rd  
Tbg. Set at 5521'.

PBTD @ 5578'  
TD @ 5624'



PBTD @ 5578'  
TD @ 5624'