

submitted in lieu of Form 3160-5

UNITED STATES
DEPARTMENT OF THE INTERIOR
BUREAU OF LAND MANAGEMENT

Sundry Notices and Reports on Wells

1. Type of Well
GAS

RECEIVED
FEB - 7 1997

2. Name of Operator
Phillips Petroleum Company

OIL CON. DIV.
DIST. 3

3. Address & Phone No. of Operator
5525 Highway 64, NBU 3004, Farmington, NM 87401 505-599-3435

4. Location of Well, Footage, Sec., T, R, M
Sec., T--N, R--W, NMPM
600' FSL & 660 FWL
Section 19, T-30-N, R-5-W

5. Lease Number
SF 078740
If Indian, All. or
6. Tribe Name
7. Unit Agreement Name
San Juan 30-5 Unit
8. Well Name & Number
SJ 30-5 Unit #6
9. API Well No.
30-039-07786
10. Field and Pool
Blanco Mesaverde
11. County and State
Rio Arriba Co, NM

12. CHECK APPROPRIATE BOX TO INDICATE NATURE OF NOTICE, REPORT, OTHER DATA

Type of Submission

Type of Action

<input checked="" type="checkbox"/> Notice of Intent	<input checked="" type="checkbox"/> Abandonment	<input type="checkbox"/> Change of Plans
<input type="checkbox"/> Subsequent Report	<input type="checkbox"/> Recompletion	<input type="checkbox"/> New Construction
<input type="checkbox"/> Final Abandonment	<input type="checkbox"/> Plugging Back	<input type="checkbox"/> Non-Routine Fracturing
	<input type="checkbox"/> Casing Repair	<input type="checkbox"/> Water Shut off
	<input type="checkbox"/> Altering Casing	<input type="checkbox"/> Conversion to Injection
	<input type="checkbox"/> Other -	

13. Describe Proposed or Completed Operations

Phillips Petroleum Company proposes to re-enter the San Juan 30-5 Unit NP #6 well to a depth of 2915' and re-plug the annulus of this well per the attached procedure. During the October 31, 1975 plugging and abandonment of this well, the openhole annulus was overlooked.

It is possible this well's annulus is the source and/or the "flow conduit" for the gas which is present in the cathodic well for the San Juan 30-5 Unit #201, a Fruitland Coal well.

Surface disturbance will be limited to "old well pad" area.

RECEIVED
BLM
97 JAN 31 PM 12:43
070 FARMINGTON, NM

14. I hereby certify that the foregoing is true and correct.

Signed Richard Allred Title Production Superintendent Date 1/28/97

(This space for use by State Office use)

APPROVED BY /s/ Duane W. Spencer Title _____ Date FEB 05 1997

CONDITION OF APPROVAL, if any:

NMOCD

RE-ENTRY AND PLUG & ABANDONMENT PROCEDURE

1-28-97

San Juan 30-5 Unit NP #6
Mesaverde Well Plugged in 1975
660' FSL, 660' FWL.
M, SW, Section 19, T-30-N, R-05-W
Rio Arriba County, NIM

Note: All cement volumes use 100% excess outside pipe. The stabilizing wellbore fluid will be 8.3 ppg, sufficient to balance all exposed formation pressures.

1. Install and test location rig anchors. Prepare blow pit. Comply to all NMOCD, BLM and Phillips safety regulations.
2. MOL and RU daylight pulling unit. Conduct safety meeting for all personnel on location. Dig out 8-5/8" casing and weld on a casing head. NU a 9" or 11" BOP and test. NU relief line and drilling equipment.
3. Tally 2-3/8" or 2-7/8" tubing work string and 6 - 4-3/4" drill collars. PU 7-7/8" bit, bit sub and drill collar and start drilling out cement plugs in 8-5/8" casing from 1975 P&A work.
4. Drill out cement from surface to approximately 2915' (50' below top of Fruitland Formation). If there is no cement to be drilled at 2915' then continue RIH until bottom is found. Circulate casing clean and then POH with bit. Run a casing scraper to PBTD.
Note: A 1975 casing inspection log recorded bad casing from: 100' to 370', 530' to 750', 1110' to 1230', 1400' to 2600'; with a bad hole at 2436' to 2444'.
5. Rig up a wireline unit and run a Cement Bond Log from 2915' or PBTD to surface. Evaluate log to determine cement quality across Fruitland and Ojo Alamo Formations. If PBTD is deeper than 2915', it may be necessary to set a plug on or above bottom.
6. **Plug #1 (Fruitland top, 2915' - 2815')**: RIH with open ended tubing to 2915'. Load casing with water. Attempt to pressure test to 500#. Mix 44 sxs Class B cement and spot a balanced plug inside casing to cover the Fruitland top. POH with tubing.
7. **Plug #2 (Kirtland and Ojo Alamo tops, 2553' - 2275')**: Perforate 4 squeeze holes at 2553'. PU a 8-5/8" cement retainer and RIH; set retainer at 2300'. Pressure test tubing to 1000#. Load casing with water and attempt to pressure test to 500#. Sting into retainer and establish rate into squeeze holes. Mix 251 sxs Class B cement, squeeze 141 sxs outside casing from 2553' to 2225' and leave 110 sxs cement inside casing to cover Ojo Alamo top. PUH above cement with tubing. Circulate casing with corrosion inhibited water. POH with tubing.
8. **Plug #3 (Nacimiento top, 1030' - 930')**: Perforate 4 squeeze holes at 1030'. PU 8-5/8" cement retainer and RIH; set at 980'. Pressure test casing above CR to 500#. Sting into retainer. Establish rate into squeeze holes. Mix 87 sxs Class B cement, squeeze 43 sxs outside casing and leave 44 sxs cement inside casing to cover Nacimiento top. POH and LD tubing and setting tool.
9. **Plug #4 (Surface)**: Perforate 4 squeeze holes at 414'. Establish circulation out bradenhead valve. Mix approximately 285 sxs Class B cement and pump down 8-5/8" casing, circulate good cement out bradenhead valve. Shut in well and WOC.
10. ND BOP and cut below surface casing. Install P&A marker with cement to comply with regulations. RD, Move off location, cut off anchors, and restore location.

San Juan 30-5 Unit NP #6

As Plugged and Abandoned (Oct 75)

Blanco Mesaverde

SW, Section 19, T-30-N, R-5-W, Rio Arriba County, NM

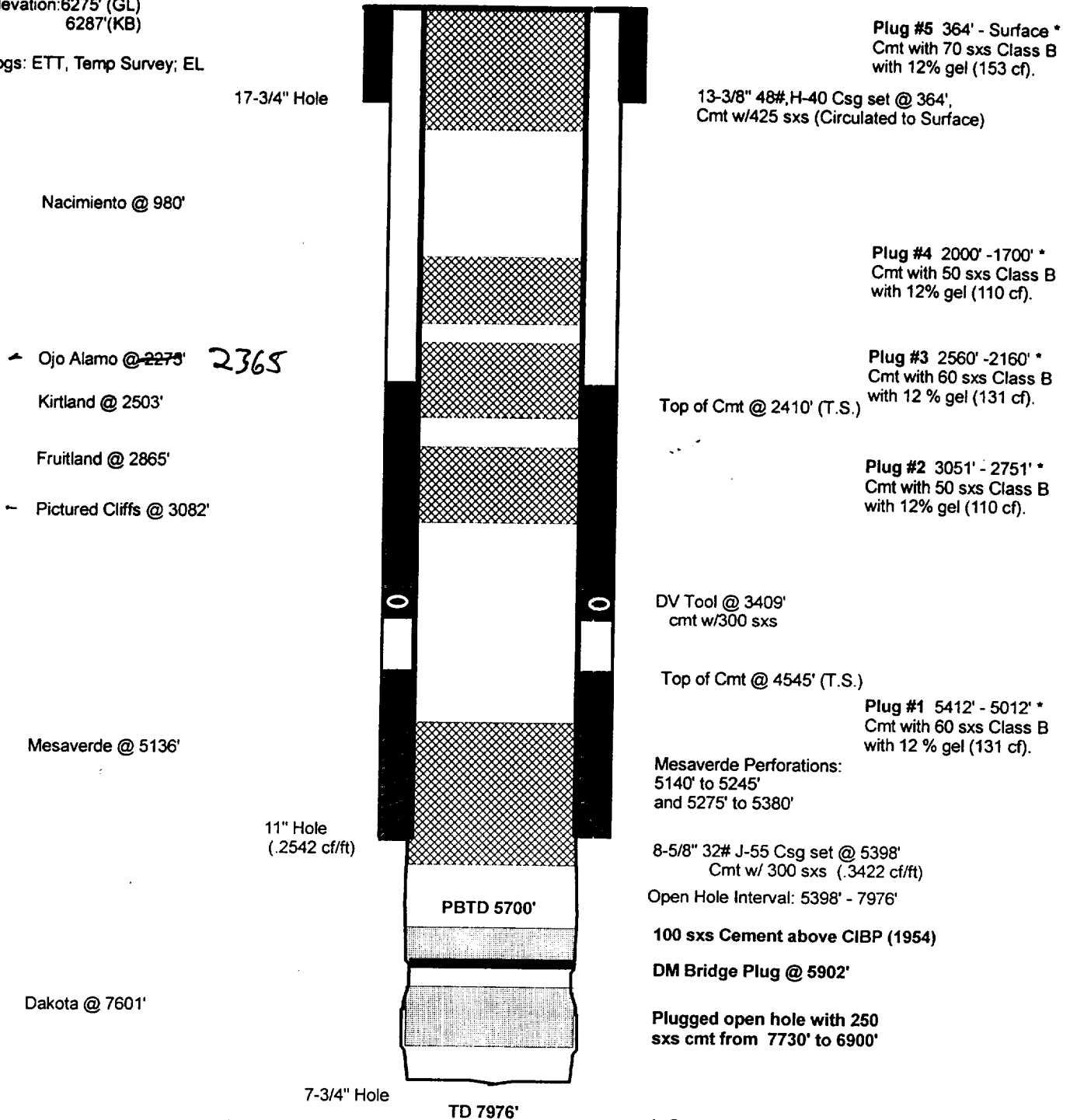
Today's Date: 1/28/97

Spud: 7/12/53

Completed: 8/14/54

Elevation: 6275' (GL)
6287' (KB)

Logs: ETT, Temp Survey; EL



* Cement plugs location and size are from the 10-31-75 Sundry Notice.

San Juan 30-5 Unit NP #6

Today's Date: 1/28/97

Spud: 7/12/53

Completed: 8/14/54

Elevation: 6275' (GL)
6287' (KB)

Logs: ETT, Temp Survey; EL

Proposed Re-Plug (1997)

Blanco Mesaverde

SW, Section 19, T-30-N, R-5-W, Rio Arriba County, NM

