

UNITED STATES
DEPARTMENT OF THE INTERIOR
BUREAU OF LAND MANAGEMENT

APPLICATION FOR PERMIT TO DRILL, DEEPEN, OR PLUG BACK

1a. TYPE OF WORK PLUG BACK	5. LEASE NUMBER USA-SF-079482-A
1b. TYPE OF WELL GAS	6. IF INDIAN, ALL. OR TRIBE NAME
2. OPERATOR El Paso Natural Gas Co.	7. UNIT AGREEMENT NAME SAN JUAN 30-4 UNIT
3. ADDRESS & PHONE NO. OF OPERATOR P.O. BOX 4289 FARMINGTON, NM 87499 (505) 326-9700	8. FARM OR LEASE NAME
4. LOCATION OF WELL 1090' FSL; 990' FWL	9. WELL NO. 22
14. DISTANCE IN MILES FROM NEAREST TOWN	10. FIELD, POOL, OR WILDCAT BASIN FRUITLAND COAL
15. DISTANCE FROM PROPOSED LOCATION TO NEAREST PROPERTY OR LEASE LINE.	11. SEC. T. R. M OR BLK. / (SEC. 03, 04W 04W)
16. ACRES IN LEASE	12. COUNTY RIO ARRIBA
17. ACRES ASSIGNED TO WELL W/ 341.79	13. STATE NM
18. DISTANCE FROM PROPOSED LOCATION TO NEAREST WELL DR. COMPL., OR APPLIED FOR ON THIS LEASE.	20. ROTARY OR CABLE TOOLS
19. PROPOSED DEPTH	21. ELEVATIONS (DF, FT, GR, ETC.) 7256' GR
22. APPROX. DATE WORK WILL START	
23. PROPOSED CASING AND CEMENTING PROGRAM	
*SEE OPERATIONS PLAN	
24. AUTHORIZED BY: <u>Ken Townsend</u> (SHL) REGULATORY AFFAIRS	DATE 7-17-90

PERMIT NO. _____ APPROVAL DATE _____

APPROVED BY _____ TITLE _____ DATE _____

NOTE: THIS FORMAT IS ISSUED IN LIEU OF US BLM FORM 3160-3.
(NO ADDITIONAL DIRT WORK WILL BE REQUIRED)

APPROVED

AUG 15 1990
Ken Townsend
FOR AREA MANAGER

NMOCD

State of New Mexico
Energy, Minerals and Natural Resources Department

Form C-102
Revised 1-1-59

OIL CONSERVATION DIVISION

P.O. Box 2088
Santa Fe, New Mexico 87504-2088

Submit to Appropriate
District Office
State Lease - 4 copies
Fee Lease - 3 copies

DISTRICT I
P.O. Box 1980, Hobbs, NM 88240

DISTRICT II
P.O. Drawer DD, Artesia, NM 88210

DISTRICT III
1000 Rio Brazos Rd., Aztec, NM 87410

WELL LOCATION AND ACREAGE DEDICATION PLAT

All Distances must be from the outer boundaries of the section

Operator El Paso Natural Gas			Lease San Juan 30-4 Unit		Well No. 22
Unit Letter M	Section 3	Township 30 North	Range 4 West	County NMPM Rio Arriba	
Actual Footage Location of Well: 1090 feet from the South line and 990 feet from the West line					
Ground level Elev. 7256'		Producing Formation Fruitland Coal		Pool Basin	
				Dedicated Acreage: 341.79 Acres	

1. Outline the acreage dedicated to the subject well by colored pencil or hatchure marks on the plat below.
2. If more than one lease is dedicated to the well, outline each and identify the ownership thereof (both as to working interest and royalty).
3. If more than one lease of different ownership is dedicated to the well, have the interest of all owners been consolidated by communitization, unitization, force-pooling, etc.?
☒ Yes ☐ No If answer is "yes" type of consolidation unitization
If answer is "no" list the owners and tract descriptions which have actually been consolidated. (Use reverse side of this form if necessary.)
No allowable will be assigned to the well until all interests have been consolidated (by communitization, unitization, forced-pooling, or otherwise) or until a non-standard unit, eliminating such interest, has been approved by the Division.

Prepared from plat
By: David O. Kilven
Dated: Apr 21, 1958

OPERATOR CERTIFICATION

I hereby certify that the information contained herein is true and complete to the best of my knowledge and belief.

Peggy Bradfield
Signature

Peggy Bradfield
Printed Name

Regulatory Affairs
Position

El Paso Natural Gas
Company

7-19-90

Date

SURVEYOR CERTIFICATION

I hereby certify that the well location shown on this plat was plotted from field notes of actual surveys made by me or under my supervision, and that the same is true and correct to the best of my knowledge and belief.

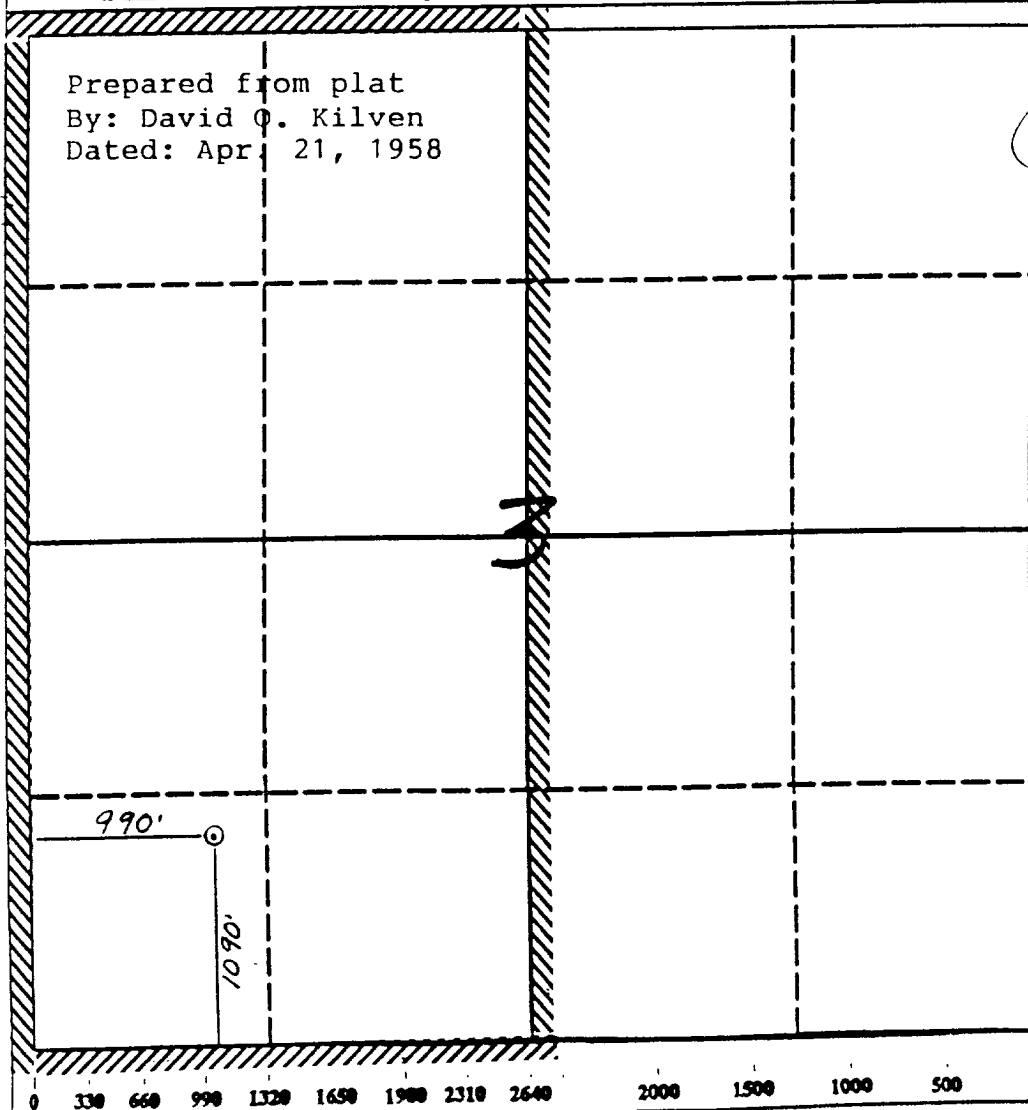
7-16-90

Date Surveyed

Neale C. Edwards
Signature
Professional Surveyor



Certificate No. 6857
Neale C. Edwards



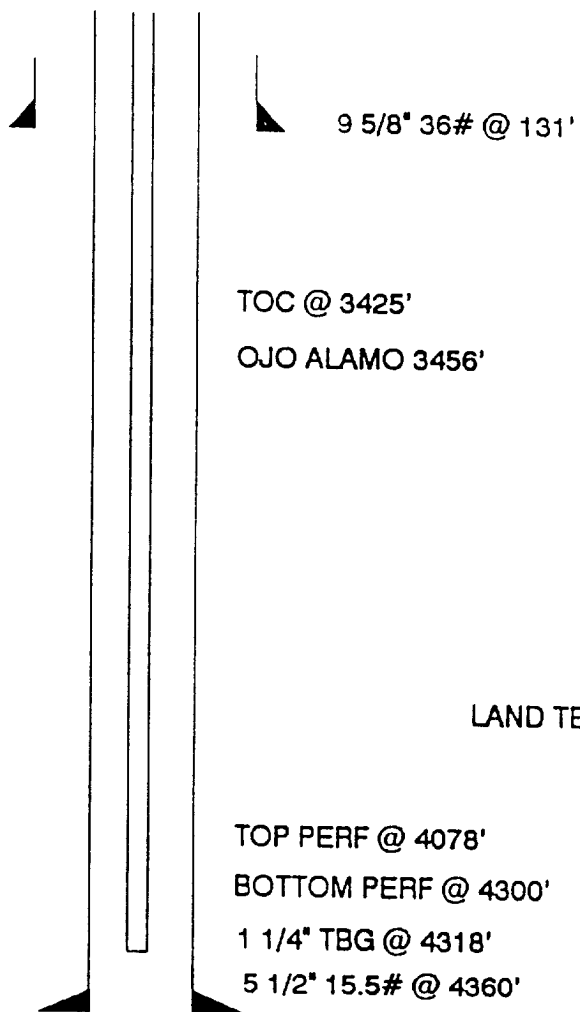
RECOMPLETION PROCEDURE
S.J. 30-4 Unit #22

NO WORK IS TO BE PERFORMED OR EQUIPMENT TO BE LOCATED OFF APPROVED WELL PAD

1. Prepare location for workover. Install or replace anchors as necessary.
2. MOL with workover rig, hold safety meeting, install safety signs and proper fire equipment at strategic points. Comply with all BLM, NMOCD, and MOI regulations.
3. Rig up blow lines, record tubing and casing pressures and blow well down. NU 6" 3000 psi BOP and test. Load hole with water.
4. TOOH with 1 1/4" tubing set.
5. PU 5 1/2" casing scraper and TIH with 2 3/8" 4.7# J-55 EUE tubing. TOOH. NU low pressure packoff. Run logs. Pick perforations from log.
6. RU wireline unit and set a 5 1/2" CIBP as close to bottom coal perforation as possible. Pressure test casing to 2500 psi for 15 minutes.
7. Perforate coal. Perforation intervals to be selected from log run.
8. TIH with 2 3/8" tubing and swab wellbore dry. Check well for gas flow. Evaluate well overnight. Check well for buildup pressure and gas flow.
9. Hold safety meeting with all personnel on location. PT surface lines to 4000 psi. Fracture stimulate well.
10. TIH with 2 3/8" tubing and clean out to CIBP.
11. When well is clean, land 2 3/8" tubing with a common pump seating nipple one joint off bottom. Land tubing 15' off bottom. Swab well in. Record final 30, 45 and 60 minute gauges on morning report. ND BOP. NU tree. Rig down and release rig.
12. Shut well in for pressure build up. Obtain gas and water sample for analysis.

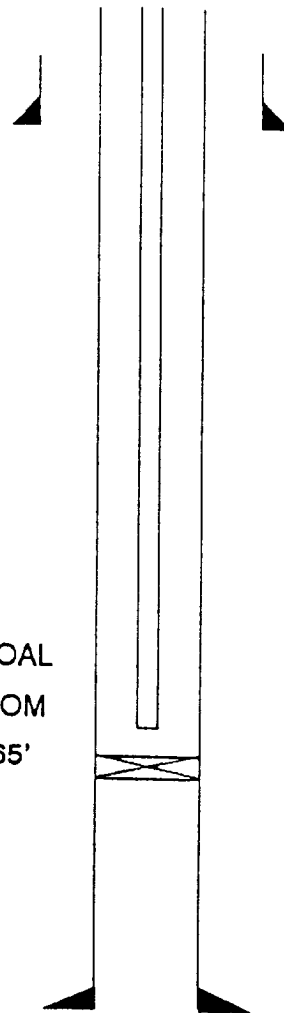
S.J. 30-4 Unit #22
WELLBORE DIAGRAMS

BEFORE W/O

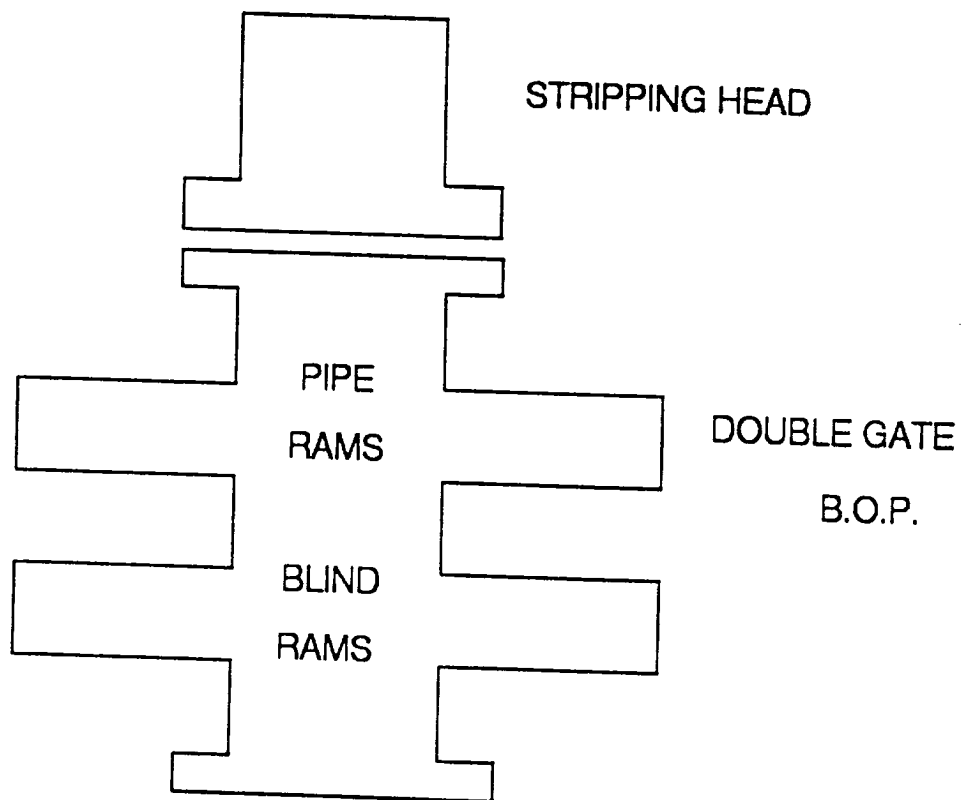


AFTER W/O

PERF ACROSS COAL
LAND TBG 10' OFF BOTTTOM
CIBP NEAR 4065'



WORKOVER / RECOMPLETION B.O.P. SCHEMATIC



MINIMUM: 6" 2000 PSI DOUBLE GATE B.O.P.
MAXIMUM ANTICIPATED SHUT-IN WELLHEAD
PRESSURE IS LESS THAN 2000 PSI