

UNITED STATES
DEPARTMENT OF THE INTERIOR
BUREAU OF LAND MANAGEMENT

SUBMIT IN TRIPLICATE*
(Other instructions on re-
verse side)

Form approved.
Budget Bureau No. 1004-0135
Expires August 31, 1985

SUNDRY NOTICES AND REPORTS ON WELLS

(Do not use this form for proposals to drill or to deepen or plug back to a different reservoir.
Use "APPLICATION FOR PERMIT—" for such proposals.)

RECEIVED

OIL WELL ☐ GAS WELL ☒ OTHER

OCT 21 1985

2. NAME OF OPERATOR

Northwest Pipeline Corporation

3. ADDRESS OF OPERATOR

P.O. Box 90 - Farmington, NM 87499

BUREAU OF LAND MANAGEMENT
FARMINGTON RESOURCE AREA

4. LOCATION OF WELL (Report location clearly and in accordance with any State requirements.*

See also space 17 below.)
At surface

990' FNL & 790' FEL NE/NE

14. PERMIT NO.

15. ELEVATIONS (Show whether DF, RT, GR, etc.)

6425' GR

5. LEASE DESIGNATION AND SERIAL NO.

NM 012735

6. IF INDIAN, ALLOTTEE OR TRIBE NAME

7. UNIT AGREEMENT NAME

San Juan 31-6 Unit

8. FARM OR LEASE NAME

San Juan 31-6 Unit

9. WELL NO.

#3

10. FIELD AND POOL, OR WILDCAT

Blanco Mesa Verde

11. SEC., T., E., M., OR BLK. AND
SURVEY OR AREA

Sec. 6, T30N, R6W

12. COUNTY OR PARISH 13. STATE

Rio Arriba

New Mexico

16. Check Appropriate Box To Indicate Nature of Notice, Report, or Other Data

NOTICE OF INTENTION TO:

TEST WATER SHUT-OFF

FRACTURE TREAT

SHOOT OR ACIDIZE

REPAIR WELL

(Other)

PULL OR ALTER CASING

MULTIPLE COMPLETE

ABANDON*

CHANGE PLANS

SUBSEQUENT REPORT OF:

WATER SHUT-OFF

FRACTURE TREATMENT

SHOOTING OR ACIDIZING

(Other)

REPAIRING WELL

ALTERING CASING

ABANDONMENT*

(NOTE: Report results of multiple completion on Well
Completion or Recompletion Report and Log form.)

17. DESCRIBE PROPOSED OR COMPLETED OPERATIONS (Clearly state all pertinent details, and give pertinent dates, including estimated date of starting any proposed work. If well is directionally drilled, give subsurface locations and measured and true vertical depths for all markers and zones pertinent to this work.)*

- 9-26-85 1) Removed steel plate w/ 4'X4" dry hole marker from casing flange.
2) Squeezed bradenhead w/ 119 sx (140 cu.ft.) C1 "B" cement.
3) Spotted surface plug w/ 94 sx (112 cu.ft.) C1 "B" cement.
4) Capped bradenhead and installed permanent 4'X4" dry hole marker.

Approved as to plugging of the well bore.
Liability under bond is retained until
surface restoration is completed.

18. I hereby certify that the foregoing is true and correct

SIGNED

J.R. Vaughan

TITLE Prod. & Drlg. Engineer

(This space for Federal or State office use)

APPROVED BY

CONDITIONS OF APPROVAL, IF ANY:

TITLE

APPROVED

DATE 10-11-85

OCT 21 1985
DATE

AREA MANAGER
FARMINGTON RESOURCE AREA

JRV/ch

*See Instructions on Reverse Side

NMOCC

RECEIVED

OCT 21 1985

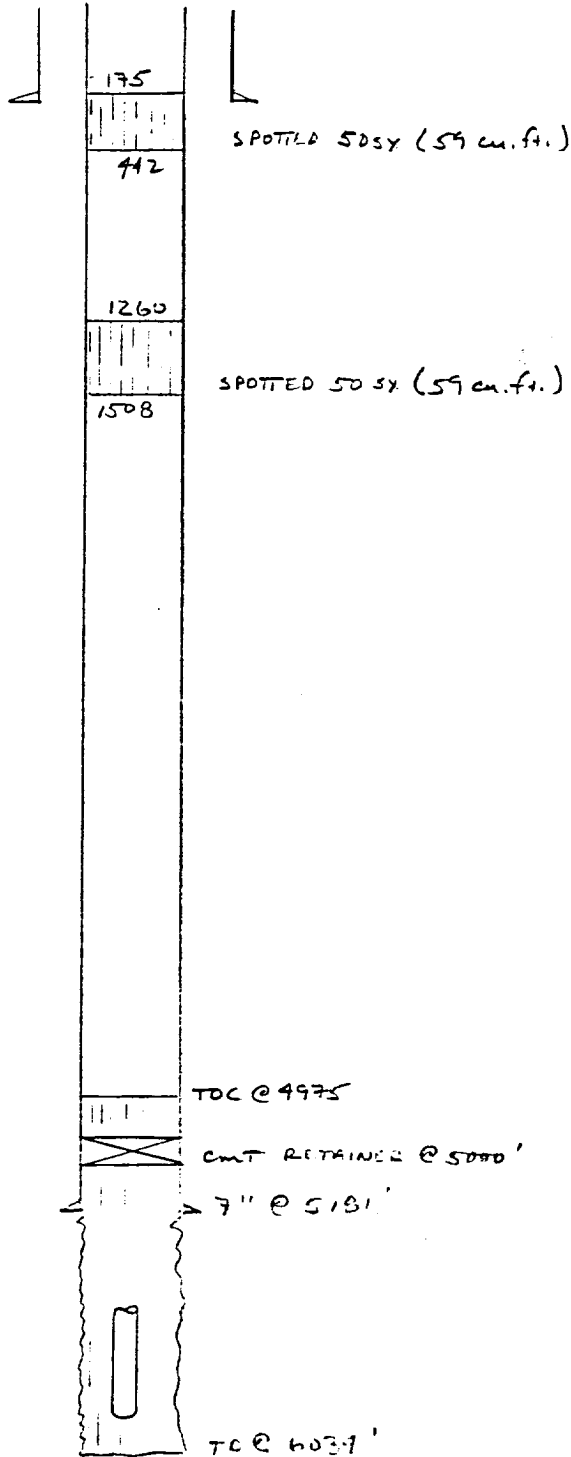
SAN JUAN
31-6 UNIT #3 (P&A)

BUREAU OF LAND MANAGEMENT
FARMINGTON RESOURCE AREA

JW

OCT 11, 19

BEFORE



AFTER (9/26/86)

