

UNITED STATES
DEPARTMENT OF THE INTERIOR
GEOLOGICAL SURVEY

APPLICATION FOR PERMIT TO DRILL, DEEPEN, OR PLUG BACK

1a. TYPE OF WORK
DRILL ☒ DEEPEN ☐ PLUG BACK ☐
b. TYPE OF WELL
OIL WELL ☐ GAS WELL ☒ OTHER ☐ SINGLE ZONE ☐ MULTIPLE ZONE ☒

2. NAME OF OPERATOR
Aztec Oil & Gas

3. ADDRESS OF OPERATOR
Drawer 570, Farmington, New Mexico

4. LOCATION OF WELL (Report location clearly and in accordance with any State requirements.)*
At surface 1540 FSL & 990 FWL, Sec. 1-30N-5W
At proposed prod. zone

14. DISTANCE IN MILES AND DIRECTION FROM NEAREST TOWN OR POST OFFICE*

15. DISTANCE FROM PROPOSED* LOCATION TO NEAREST PROPERTY OR LEASE LINE, FT. (Also to nearest drlg. unit line, if any)

18. DISTANCE FROM PROPOSED LOCATION* TO NEAREST WELL, DRILLING, COMPLETED, OR APPLIED FOR, ON THIS LEASE, FT.

21. ELEVATIONS (Show whether DF, RT, GR, etc.)
6590 Gr

23. PROPOSED CASING AND CEMENTING PROGRAM

SIZE OF HOLE	SIZE OF CASING	WEIGHT PER FOOT	SETTING DEPTH	QUANTITY OF CEMENT
15"	10 3/4"	32.75#	300'	150 ss
9-7/8"	7-5/8"	26.40#	3809'	300 ss
6-3/4"	4-1/2"	10.5# & 11.6	8265'	600 Sx

Propose to:

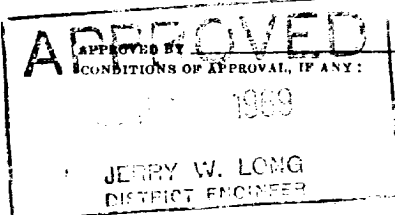
Drill 15" hole and set 10-3/4" casing at 300' cmt with 150 ss
Drill 9-7/8" hole and set 7-5/8" at 3809' cmt with 300 ss
Drill with gas a 6-3/4" hole from 3809 to TD 8265, run 4 1/2" liner to TD cmt with 600 ss
Perforate and frac Mesaverde and Dakota zones
Run Baker Model "D" production packer
Run 2-3/8" tubing

Proration unit: W/2 Sec.

IN ABOVE SPACE DESCRIBE PROPOSED PROGRAM: If proposal is to deepen or zone. If proposal is to drill or deepen directionally, give pertinent data - preventer program, if any.

24.
SIGNED Jerry W. Long TITLE Dis
(This space for Federal or State office use)

PERMIT NO. _____ APPRO. _____



*See instructions On Rev

5. LEASE DESIGNATION AND SERIAL NO.

NM-4453

6. IF INDIAN, ALLOTTEE OR TRIBE NAME

7. UNIT AGREEMENT NAME

8. FARM OR LEASE NAME

Carson

9. WELL NO.

#1

10. FIELD AND POOL, OR WILDCAT

Mesaverde-Dakota

11. SEC., T., R., M., OR BLK. AND SURVEY OR AREA

Sec. 1-30N-5W

12. COUNTY OR PARISH 13. STATE

Rio Arriba New Mexico

RECEIVED

SEP 8 1969

OIL CON. COM.

DIST. 8

17. NO. OF ACRES ASSIGNED TO THIS WELL

319.29

20. ROTARY OR CABLE TOOLS

Rotary

22. APPROX. DATE WORK WILL START*

RECEIVED

SEP 3 1969

- 319.29 Acres U. S. GEOLOGICAL SURVEY
data on present productive formations and measured and true vertical depths. Give blowout

perintendent DATE September 4, 1969

**NEW MEXICO OIL CONSERVATION COMMISSION
WELL LOCATION AND ACREAGE DEDICATION PLAT**

Form C-102
Supersedes C-128
Effective 1-1-65

All distances must be from the outer boundaries of the Section.

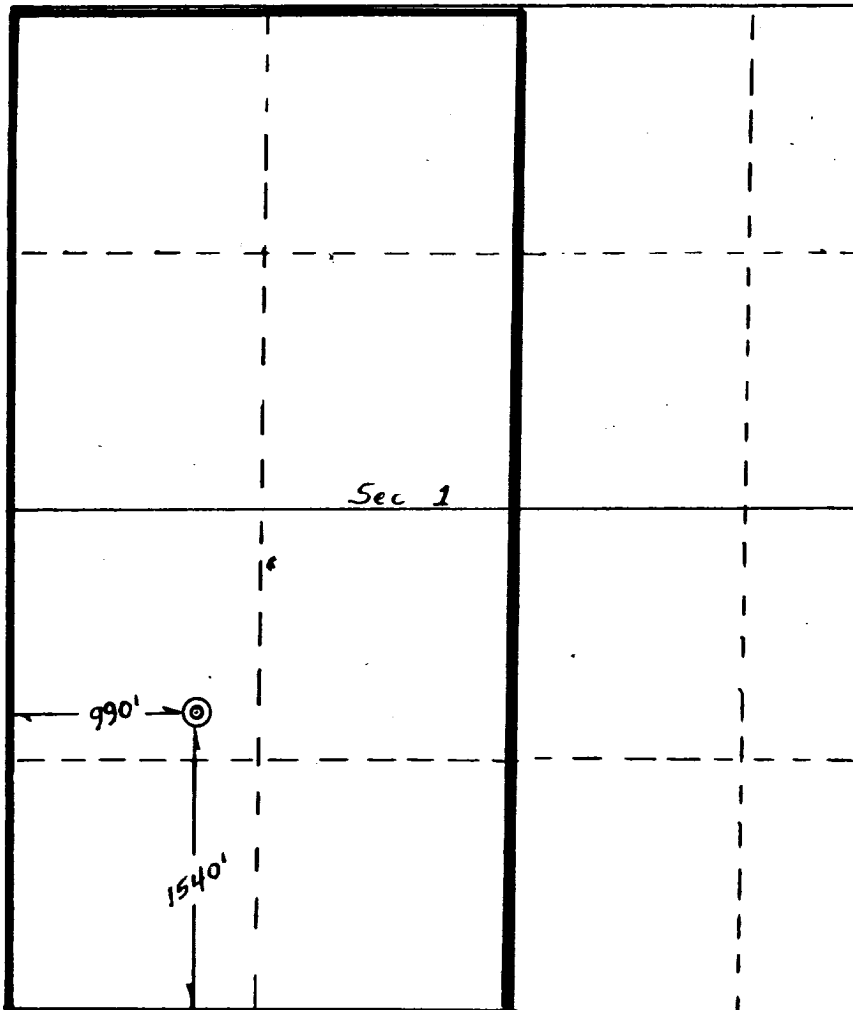
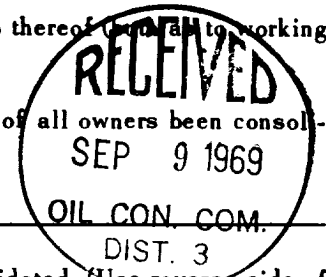
Operator Aztec Oil & Gas Company			Lease Carson		Well No. 1
Unit Letter L	Section 1	Township 30N	Range 5W	County Rio Arriba County	
Actual Footage Location of Well: 1540 feet from the South line and 990' feet from the West line					
Ground Level Elev: 6590	Producing Formation Dakota Mesaverde		Pool Blanco Mesaverde-East Dakota	Dedicated Acreage: 312.39 Acres	

1. Outline the acreage dedicated to the subject well by colored pencil or hachure marks on the plat below.
2. If more than one lease is dedicated to the well, outline each and identify the ownership thereof (and all working interest and royalty).
3. If more than one lease of different ownership is dedicated to the well, have the interests of all owners been consolidated by communitization, unitization, force-pooling, etc?

☐ Yes ☐ No If answer is "yes," type of consolidation _____

If answer is "no," list the owners and tract descriptions which have actually been consolidated. (Use reverse side of this form if necessary.) _____

No allowable will be assigned to the well until all interests have been consolidated (by communitization, unitization, forced-pooling, or otherwise) or until a non-standard unit, eliminating such interests, has been approved by the Commission.



Scale: 1" = 1000'

CERTIFICATION

I hereby certify that the information contained herein is true and complete to the best of my knowledge and belief.

Name
Joe C. Salton

Position
District Superintendent

Company
Aztec Oil & Gas

Date
September 4, 1969

I hereby certify that the well location shown on this plat was plotted from field notes of actual surveys made by me or under my supervision, and that the same is true and correct to the best of my knowledge and belief.

Date Surveyed
June 19, 1969

Registered Professional Engineer and/or Land Surveyor
Frank B. Kerr Jr.

Certificate No.
3950