

District I  
PO Box 1980, Hobbs, NM 88241-1980  
District II  
PO Drawer DD, Artesia, NM 88211-0719  
District III  
1000 Rio Brazos Rd., Aztec, NM 87410  
District IV  
PO Box 2088, Santa Fe, NM 87504-2088

State of New Mexico  
Energy, Minerals & Natural Resources Department

OIL CONSERVATION DIVISION  
PO Box 2088  
Santa Fe, NM 87504-2088

ckp  
Form C-102  
Revised February 21, 1994  
Instructions on back  
Submit to Appropriate District Office  
State Lease - 4 Copies  
Fee Lease - 3 Copies  
☐ AMENDED REPORT

WELL LOCATION AND ACREAGE DEDICATION PLAT

<sup>1</sup> API Number 30-039-20586		<sup>2</sup> Pool Code 96700		<sup>3</sup> Pool Name Wildcat 30N5W3A; Pictured Cliffs	
<sup>4</sup> Property Code 010044		<sup>5</sup> Property Name SCHALK 55			<sup>6</sup> Well Number 1
<sup>7</sup> OGRID No. 020389		<sup>8</sup> Operator Name SCHALK DEVELOPMENT CO.			<sup>9</sup> Elevation 6,486

<sup>10</sup> Surface Location

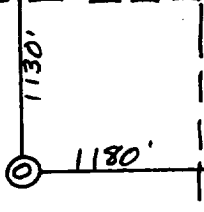

UL or lot no.	Section	Township	Range	Lot Idn	Feet from the	North/South line	Feet from the	East/West line	County
A	3	30N	5W		1,130	North	1,180	East	Rio Arriba

<sup>11</sup> Bottom Hole Location If Different From Surface

UL or lot no.	Section	Township	Range	Lot Idn	Feet from the	North/South line	Feet from the	East/West line	County

<sup>12</sup> Dedicated Acres 158.76160	<sup>13</sup> Joint or Infill N	<sup>14</sup> Consolidation Code	<sup>15</sup> Order No.
--------------------------------------------	------------------------------------	----------------------------------	-------------------------

NO ALLOWABLE WILL BE ASSIGNED TO THIS COMPLETION UNTIL ALL INTERESTS HAVE BEEN CONSOLIDATED  
OR A NON-STANDARD UNIT HAS BEEN APPROVED BY THE DIVISION

16		<b>17 OPERATOR CERTIFICATION</b> I hereby certify that the information contained herein is true and complete to the best of my knowledge and belief   Signature Steve Schalk Printed Name General Manager Title March 14, 1997 Date	
		<b>18 SURVEYOR CERTIFICATION</b> I hereby certify that the well location shown on this plat was plotted from field notes of actual surveys made by me or under my supervision, and that the same is true and correct to the best of my belief.  Date of Survey Signature and Seal of Professional Surveyer:	
		Certificate Number	

RECEIVED  
MAR 18 1997  
OIL CON. DIV.  
DIST. 3

**NEW MEXICO OIL CONSERVATION COMMISSION  
WELL LOCATION AND ACERAGE DEDICATION PLAT**

All distances must be from the outer boundaries of the Section

Operator <b>JOHN E. SCHALK</b>			Lease <b>FEDERAL CARSON</b>			Well No. <b>3</b>		
Unit Letter <b>A</b>	Section <b>3</b>	Township <b>30 NORTH</b>	Range <b>5 WEST</b>	County <b>RIO ARriba</b>				
Actual Footage Location of Well: <b>1130</b> feet from the <b>NORTH</b> line and <b>1180</b> feet from the <b>EAST</b> line								
Ground Level Elev. <b>6485.0</b>		Producing Formation <b>DAKOTA</b>		Pool <b>BASIN DAKOTA</b>			Dedicated Acreage <b>320</b> Acres	

1. Outline the acreage dedicated to the subject well by colored pencil or hachure marks on the plat below.
2. If more than one lease is dedicated to the well, outline each and identify the ownership thereof (both as to working interest and royalty),
3. If more than one lease of different ownership is dedicated to the well, have the interests of all owners been consolidated by communitization, unitization, force-pooling, etc?

( ) Yes ( ) No If answer is "yes," type of consolidation .....

If answer is "no," list the owners and tract descriptions which have actually consolidated. (Use reverse side of this form if necessary) .....

No allowable will be assigned to the well until all interests have been consolidated (by communitization, unitization, forced-pooling, or otherwise) or until a non standard unit, eliminating such interests, has been approved by the Commission.

**CERTIFICATION**

I hereby certify that the information contained herein is true and complete to the best of my knowledge and belief.

*John E. Schalk*  
 Name \_\_\_\_\_  
 Position \_\_\_\_\_

Company  
**JOHN E. SCHALK**

Date  
**DECEMBER 28, 1972**

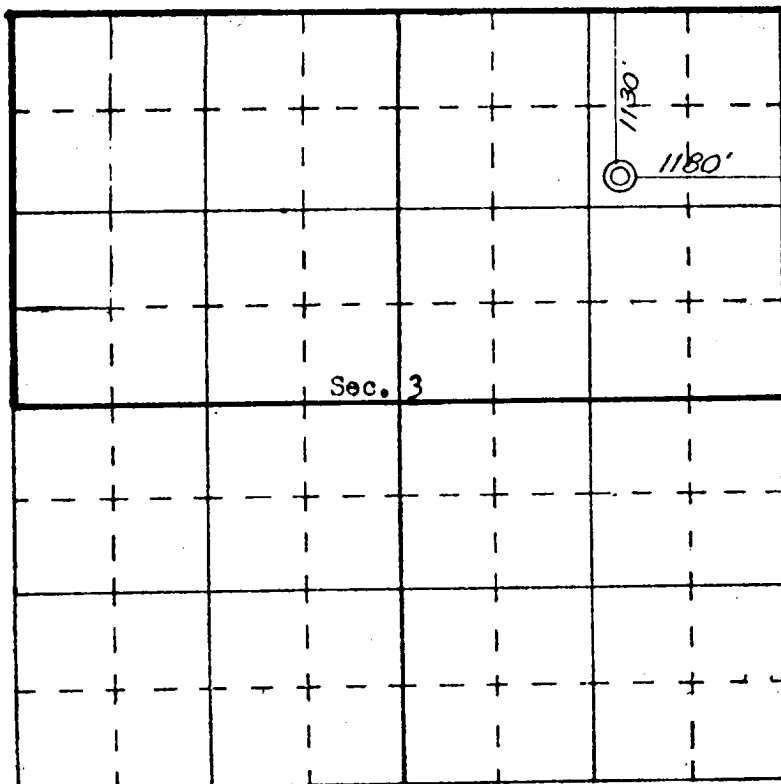
I hereby certify that the well location shown on this plat was plotted from field notes of actual surveys made by me or under my supervision, and that the same is true and correct to the best of my knowledge and belief.

**21 December 1972**  
 Date Surveyed

*James P. Reese*  
 Registered Professional Engineer  
 and/or Land Surveyor

**JAMES P. REESE**

**1463**  
 Certificate No. **JAMES P. REESE**



SCALE—4 INCHES EQUALS 1 MILE

SAN JUAN ENGINEERING COMPANY, FARMINGTON, N. M.