

# NEW MEXICO OIL CONSERVATION COMMISSION WELL LOCATION AND ACERAGE DEDICATION PLAT

All distances must be from the outer boundaries of the Section

Operator		COASTLINE PETROLEUM CO., INC.		Lease	NM. 4449		Well No.	2	
JOHN E. SCHALK		JOHN E. SCHALK		ONE STAR INDUSTRIES		SCHALK 49			
Unit Letter	Section	Township	Range	County					
0	23	30 North	4 WEST	RIO ARriba					
Actual Footage Location of Well:									
850	feet from the	SOUTH	line	1765	feet from the	EAST	line		
Ground Level Elev.	Producing Formation	Pack	Dedicated Acreage						
7310.0	DAKOTA TC	BASIN DAKOTA	160		Acres				

- Outline the acreage dedicated to the subject well by colored pencil or hatchure marks on the plat below.
- If more than one lease is dedicated to the well, outline each and identify the ownership thereof (both as to working interest and royalty).
- If more than one lease of different ownership is dedicated to the well, have the interests of all owners been consolidated by communitization, unitization, force-pooling, etc?

( ) Yes ( ) No If answer is "yes," type of consolidation .....

If answer is "no," list the owners and tract descriptions which have actually consolidated. (Use reverse side of this form if necessary) .....

No allowable will be assigned to the well until all interests have been consolidated (by communitization, unitization, forced-pooling, or otherwise) or until a non standard unit, eliminating such interests, has been approved by the Commission.

## CERTIFICATION

I hereby certify that the information contained herein is true and complete to the best of my knowledge and belief.

*John E. Schalk*  
Name

JOHN E. SCHALK

Position

AGENT

Company

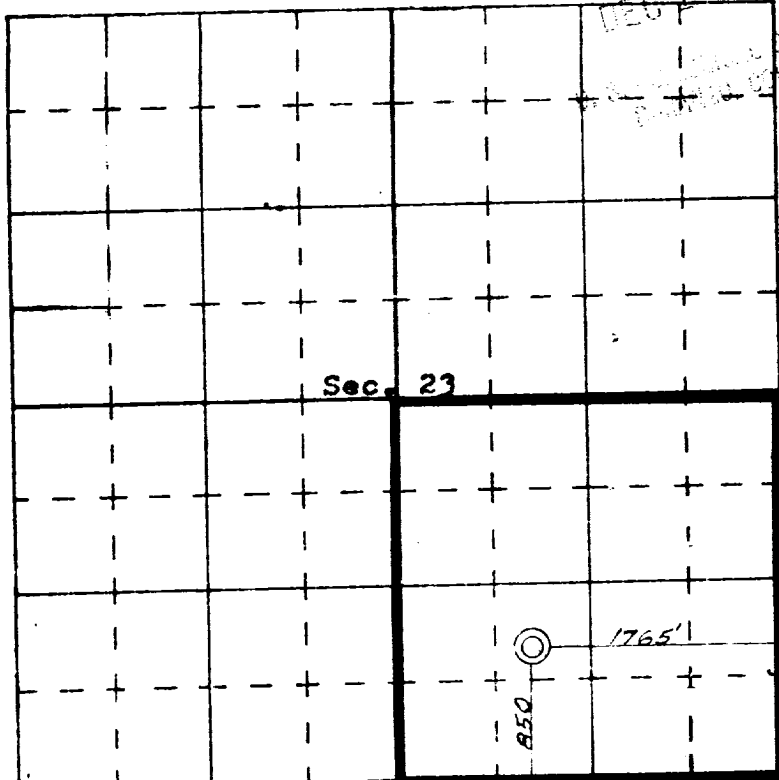
COASTLINE PETROLEUM CO, INC

Date

DECEMBER 12, 1974

I hereby certify that the well location shown on this plat was plotted from field notes of actual surveys made by me or under my supervision, and that the same is true and correct to the best of my knowledge and belief.

1  
Date  
STATE OF  
REGISTERED PROFESSIONAL ENGINEER  
and Surveyor  
JAMES P. LEESE  
NEW MEXICO  
1488  
Certificate No. JAMES P. LEESE



SCALE—4 INCHES EQUALS 1 MILE

SAN JUAN ENGINEERING COMPANY, FARMINGTON, N. M.