

UNITED STATES  
DEPARTMENT OF THE INTERIOR  
GEOLOGICAL SURVEY

## APPLICATION FOR PERMIT TO DRILL, DEEPEN, OR PLUG BACK

## 1a. TYPE OF WORK

DRILL ☒DEEPEN ☐PLUG BACK ☐

## b. TYPE OF WELL

OIL  
WELL ☐GAS  
WELL ☒OTHER ☐SINGLE  
ZONE ☐MULTIPLE  
ZONE ☐

## 2. NAME OF OPERATOR

LONE STAR INDUSTRIES, INC.

## 3. ADDRESS OF OPERATOR

C/O JOHN E. SCHALK, P. O. BOX 2078, FARMINGTON,

## 4. LOCATION OF WELL (Report location clearly and in accordance with any State requirements.)\*

At surface

NEW MEXICO 87401

790' FROM THE NORTH LINE, 790' FROM THE WEST LINE,  
SECTION 25, TOWNSHIP 30 NORTH, RANGE 4 WEST

## 14. DISTANCE IN MILES AND DIRECTION FROM NEAREST TOWN OR POST OFFICE\*

50 MILES NORTH AND EAST OF BLOOMFIELD, NEW MEXICO

## 15. DISTANCE FROM PROPOSED\*

LOCATION TO NEAREST

PROPERTY OR LEASE LINE, FT.

(Also to nearest drg. unit line, if any)

790'

## 18. DISTANCE FROM PROPOSED LOCATION\*

TO NEAREST WELL, DEWELLING, COMPLETED,  
OR APPLIED FOR, ON THIS LEASE, FT.

1/2 MILE

## 16. NO. OF ACRES IN LEASE

640

17. NO. OF ACRES ASSIGNED  
TO THIS WELL

320

## 19. PROPOSED DEPTH

8792'

## 20. ROTARY OR CABLE TOOLS

ROTARY

## 21. ELEVATIONS (Show whether DF, RT, GR, etc.)

7220.0 GR.

## 22. APPROX. DATE WORK WILL START\*

SEPTEMBER 20, 1973

## 23.

## PROPOSED CASING AND CEMENTING PROGRAM

SIZE OF HOLE	SIZE OF CASING	WEIGHT PER FOOT	SETTING DEPTH	QUANTITY OF CEMENT
15"	10-3/4"	32.75#	300'	300 SACKS
7-7/8"	4-1/2"	11.60#	8792'	350 SACKS

WILL DRILL WITH ROTARY TOOLS TO TEST THE DAKOTA  
FORMATION. WILL RUN AN INDUCTION LOG AND FORMATION  
DENSITY CALIPER GAMMA RAY LOG AT TOTAL DEPTH. IF  
PRODUCTIVE, WILL CEMENT 4-1/2" CASING AND PERFORATE  
AS NEEDED.

## ESTIMATED TOPS

OJO ALAMO	-	3357'	MANCOS	-	6422'
KIRTLAND	-	3580'	GALLUP	-	7059'
FRUITLAND COALS	-	3862'	GREENHORN	-	8317'
PICTURED CLIFFS	-	4160'	GRANEROS	-	8362'
CLIFF HOUSE	-	6107'	DAKOTA	-	8542'
POINT LOOKOUT	-	6300'	TOTAL DEPTH	-	8792'

IN ABOVE SPACE DESCRIBE PROPOSED PROGRAM: If proposal is to deepen or plug back, give data on present productive zone and proposed new productive zone. If proposal is to drill or deepen directionally, give pertinent data on subsurface locations and measured and true vertical depths. Give blowout preventer program, if any.

## 24.

SIGNATURE

TITLE

DATE 9-12-73

(This space for Federal or State office use)

PREPARED BY

APPROVAL DATE

APPROVED BY

TITLE

DATE

CONDITIONS OF APPROVAL, IF ANY:

# NEW MEXICO OIL CONSERVATION COMMISSION

## WELL LOCATION AND ACERAGE DEDICATION PLAT

All distances must be from the outer boundaries of the Section

Operator <b>LONE STAR INDUSTRIES-SCHALK</b>		Lease <b>Lone Star Industries Schalk 76</b>		Well No. <b>1</b>
Unit Letter <b>D</b>	Section <b>25</b>	Township <b>30 NORTH</b>	Range <b>4 WEST</b>	County <b>RIO ARriba</b>
Actual Footage Location of Well: <b>790</b> feet from the <b>NORTH</b> line and <b>790</b> feet from the <b>WEST</b> line				
Ground Level Elev. <b>7220</b>	Producing Formation <b>DAKOTA</b>	Pool <b>BASIN DAKOTA</b>	Dedicated Acreage: <b>320</b> Acres	

1. Outline the acreage dedicated to the subject well by colored pencil or hachure marks on the plat below.
2. If more than one lease is dedicated to the well, outline each and identify the ownership thereof (both as to working interest and royalty),
3. If more than one lease of different ownership is dedicated to the well, have the interests of all owners been consolidated by communitization, unitization, force-pooling, etc?  
☐ Yes   ☐ No   If answer is "yes," type of consolidation \_\_\_\_\_

If answer is "no," list the owners and tract descriptions which have actually consolidated. (Use reverse side of this form if necessary.) \_\_\_\_\_

No allowable will be assigned to the well until all interests have been consolidated (by communitization, unitization, forced-pooling, or otherwise) or until a non standard unit, eliminating such interests, has been approved by the Commission.

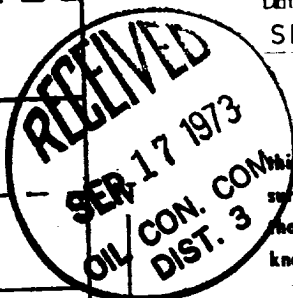
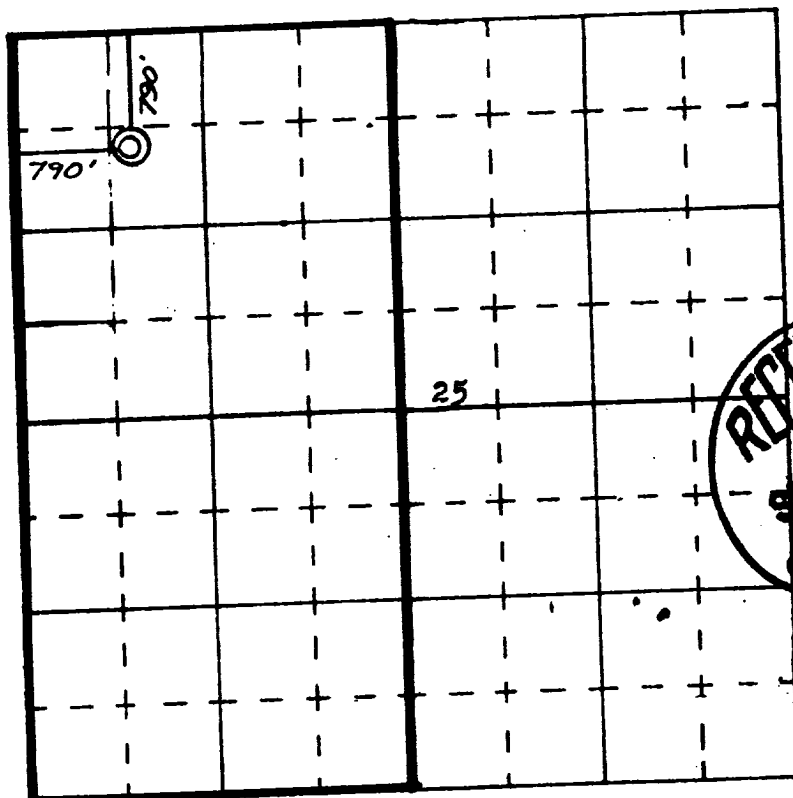
### CERTIFICATION

I hereby certify that the information contained herein is true and complete to the best of my knowledge and belief.

*John E. Schalk*  
 Name  
**JOHN E. SCHALK, AGENT**  
 Position

Company \_\_\_\_\_

Date  
**SEPTEMBER 12, 1973**

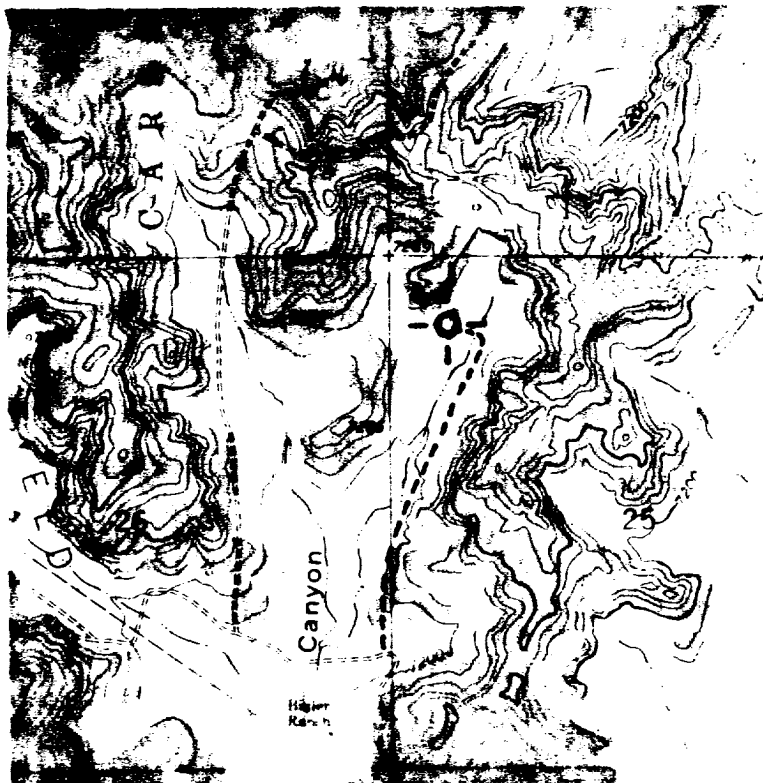


I hereby certify that the well location shown on this plat was plotted from field notes of actual surveys made by me or under my supervision, and that the same is true and correct to the best of my knowledge and belief.

**5 September 1973**  
 Date Surveyed  
*James P. Leese*  
 Registered Professional Engineer  
 and/or Land Surveyor  
**James P. Leese**  
**1463**  
**NEW MEXICO**  
**JAMES P. LEESE**  
 Certificate No. \_\_\_\_\_

SCALE—4 INCHES EQUALS 1 MILE

SAN JUAN ENGINEERING COMPANY, FARMINGTON, N. M.

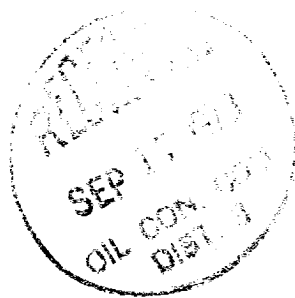
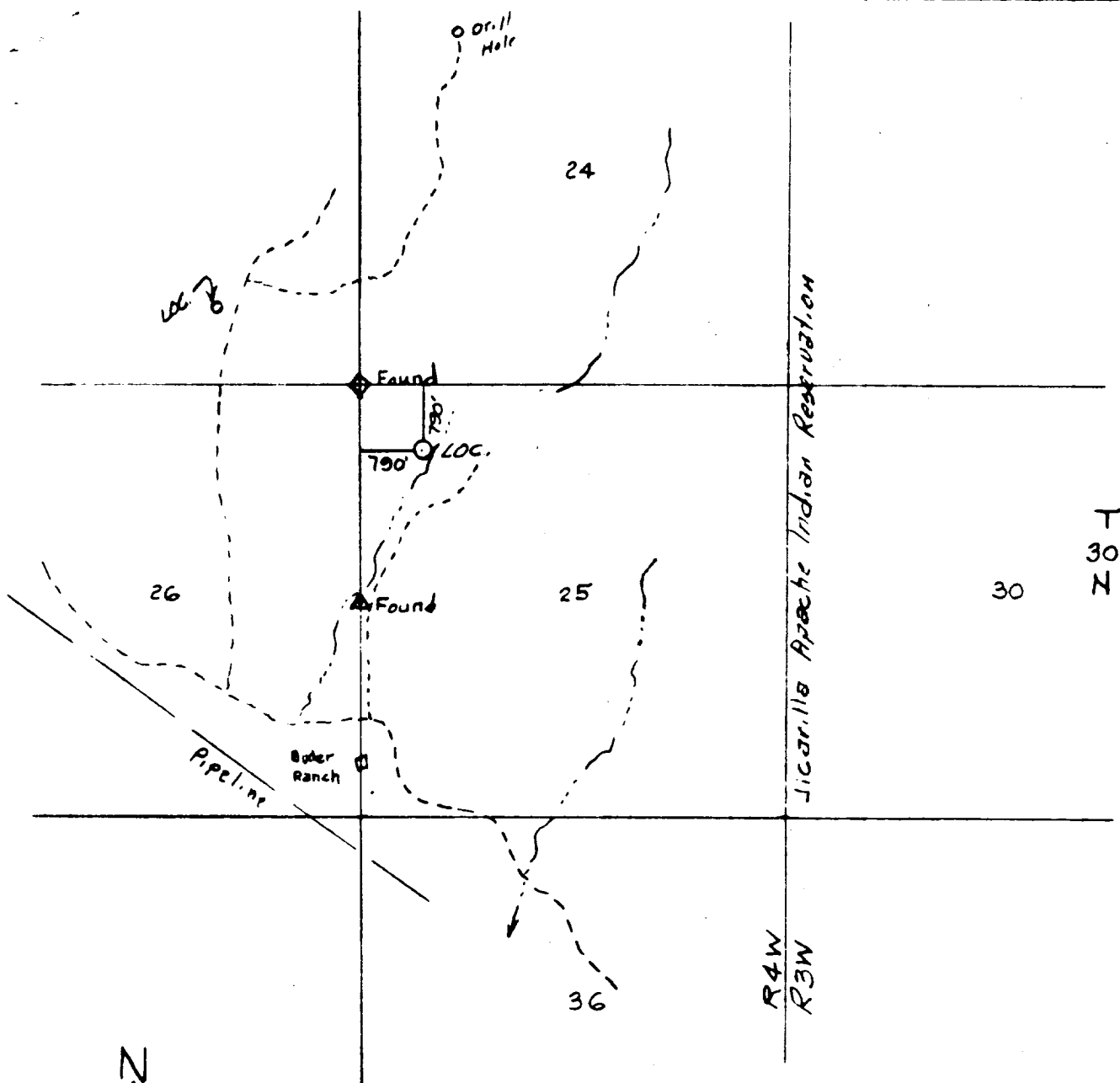


Proposed Road;  
7/10 mile long  
14 feet wide



John E. Schalk  
Hone Star Industries 76-1  
Sec. 25, T30N, R4W





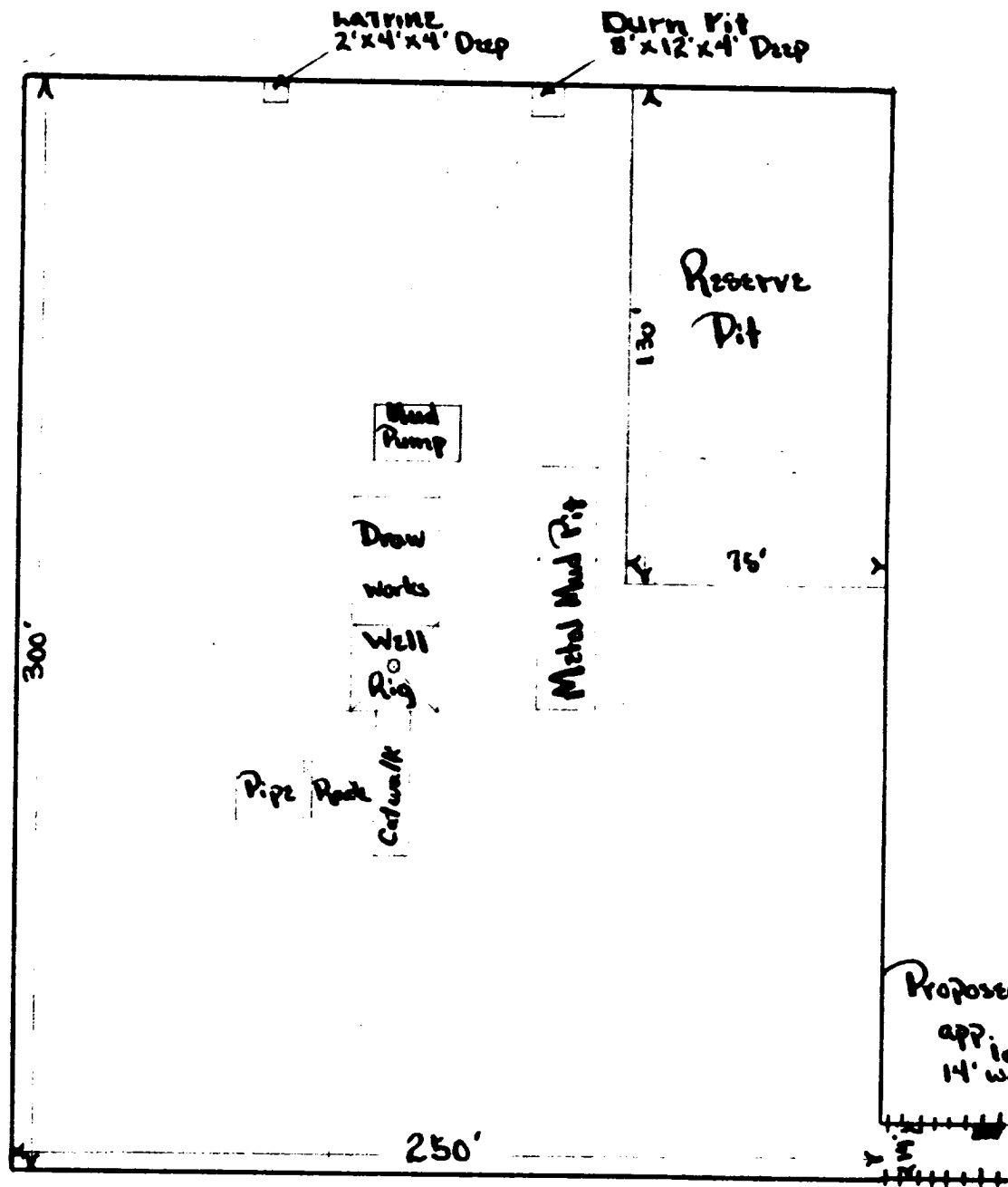
VICINITY MAP FOR  
**JOHN E. SCHALK**

Showing

Well Location in NW 1/4  
 of Sec 25, T30N, R4W,  
 N.M.P.M., Rio Arriba Co.,  
 New Mexico

Scale 1"=2000' Date 9-5-1973





John E. Schalk  
Lone Star Industries 76-1  
Sec. 25, T30N, R4W