

UNITED STATES  
DEPARTMENT OF THE INTERIOR  
GEOLOGICAL SURVEY

30-039-21148

## APPLICATION FOR PERMIT TO DRILL, DEEPEN, OR PLUG BACK

## 1a. TYPE OF WORK

DRILL ☒DEEPEN ☐PLUG BACK ☐

## b. TYPE OF WELL

OIL  
WELL ☐GAS  
WELL ☒

OTHER

SINGLE  
ZONE ☐MULTIPLE  
ZONE ☐

## 2. NAME OF OPERATOR

Northwest Pipeline Corporation

## 3. ADDRESS OF OPERATOR

P. O. Box 90 Farmington, New Mexico 87401

## 4. LOCATION OF WELL (Report location clearly and in accordance with any State requirements.\*)

At surface

1820' FNL &amp; 1170' FEL

At proposed prod. zone

## 14. DISTANCE IN MILES AND DIRECTION FROM NEAREST TOWN OR POST OFFICE\*

## 15. DISTANCE FROM PROPOSED\*

LOCATION TO NEAREST  
PROPERTY OR LEASE LINE, FT.  
(Also to nearest drlg. unit line, if any)

## 18. DISTANCE FROM PROPOSED LOCATION\*

TO NEAREST WELL, DRILLING, COMPLETED,  
OR APPLIED FOR, ON THIS LEASE, FT.

## 21. ELEVATIONS (Show whether DF, RT, GR, etc.)

6826' GR

## 16. NO. OF ACRES IN LEASE

## 19. PROPOSED DEPTH

6345'

17. NO. OF ACRES ASSIGNED  
TO THIS WELL

320

## 20. ROTARY OR CABLE TOOLS

Rotary

## 22. APPROX. DATE WORK WILL START\*

Sept. 10, 1975

## 23.

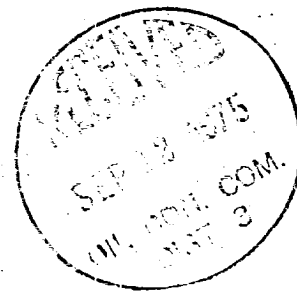
## PROPOSED CASING AND CEMENTING PROGRAM

SIZE OF HOLE	SIZE OF CASING	WEIGHT PER FOOT	SETTING DEPTH	QUANTITY OF CEMENT
13 3/4"	9 5/8"	36	200'	180 sks.
8 3/4"	7"	20	4035'	160 sks.
6 1/4"	4 1/2"	10.5	3885' to 6345'	215 sks.

Selectively perforate and stimulate the Mesa Verde formation.

A BOP will be installed when the surface casing has been set and cemented.  
All subsequent work will be performed through the BOP.

The E/2 of Section 29 is dedicated to this well.



IN ABOVE SPACE DESCRIBE PROPOSED PROGRAM: If proposal is to deepen or plug back, give data on present productive zone and proposed new productive zone. If proposal is to drill or deepen directionally, give pertinent data on subsurface locations and measured and true vertical depths. Give blowout preventer program, if any.

## 24.

SIGNED

*D. H. Maroncelli*

TITLE

Petroleum Engineer

DATE

August 25, 1975

(This space for Federal or State office use)

PERMIT NO.

APPROVAL DATE

APPROVED BY

TITLE

DATE

CONDITIONS OF APPROVAL, IF ANY:

*el*

\*See Instructions On Reverse Side

NEW MEXICO OIL CONSERVATION COMMISSION  
WELL LOCATION AND ACREAGE DEDICATION PLAT

Form C-102  
Supersedes C-128  
Effective 1-1-65

All distances must be from the outer boundaries of the Section.

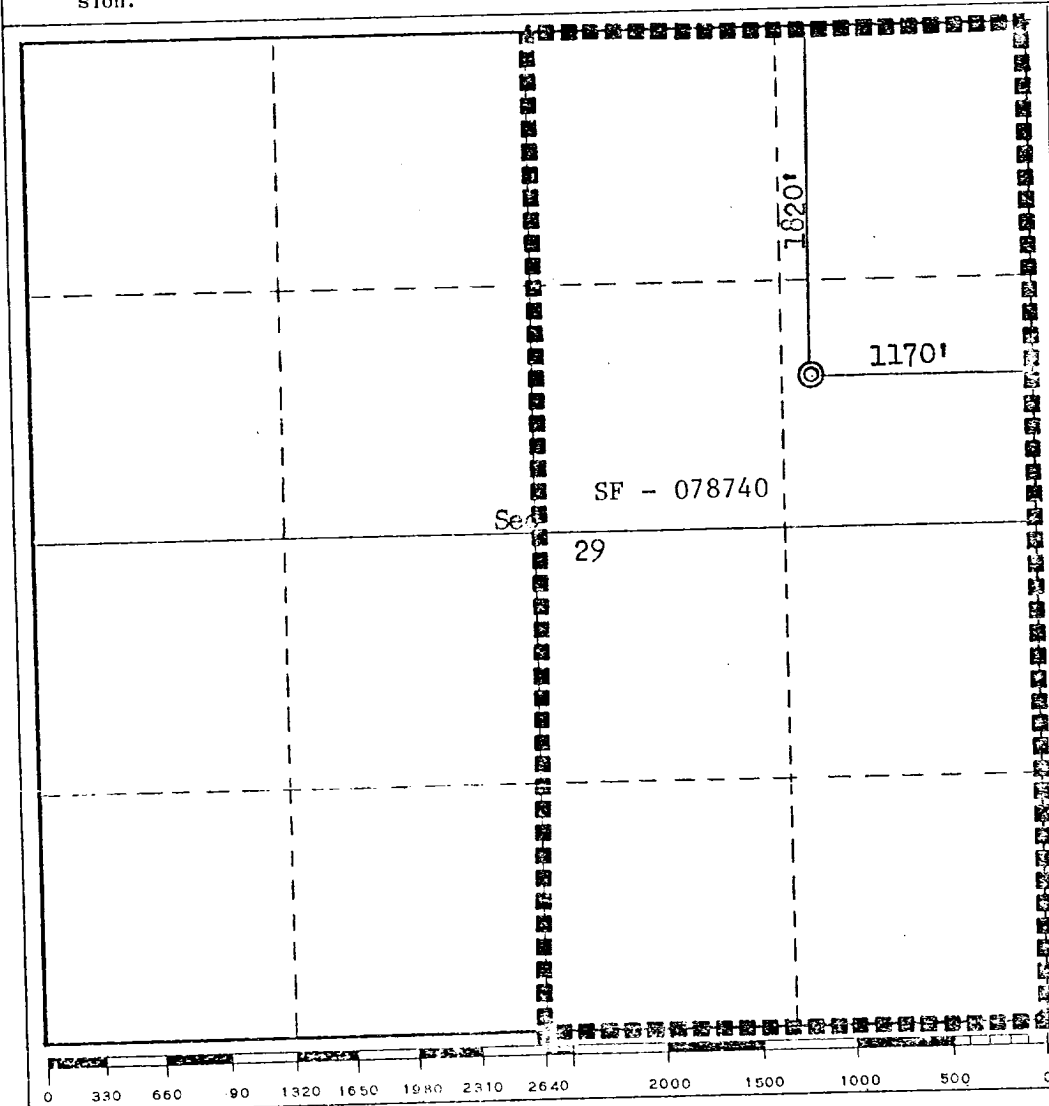
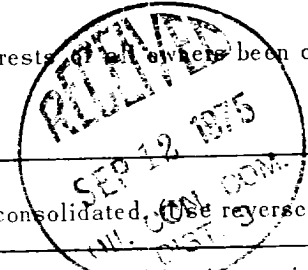
Operator <b>Northwest Pipeline Corporation</b>			Lease <b>San Juan 30-5 Unit</b>		Well No. <b>2R</b>
Unit Letter <b>H</b>	Section <b>29</b>	Township <b>30N</b>	Range <b>5W</b>	County <b>Rio Arriba</b>	
Actual Footage Location of Well: <b>1820</b> feet from the <b>North</b> line and <b>1170</b> feet from the <b>East</b> line					
Ground Level Elev. <b>6826</b>	Producing Formation <b>Mesa Verde</b>	Pool <b>Blanco Mesa Verde</b> /		Dedicated Acreage: <b>320.00</b> Acres	

1. Outline the acreage dedicated to the subject well by colored pencil or hachure marks on the plat below.
2. If more than one lease is dedicated to the well, outline each and identify the ownership thereof (both as to working interest and royalty).
3. If more than one lease of different ownership is dedicated to the well, have the interests been consolidated by communitization, unitization, force-pooling, etc?

☐ Yes ☐ No If answer is "yes," type of consolidation \_\_\_\_\_

If answer is "no," list the owners and tract descriptions which have actually been consolidated. (Use reverse side of this form if necessary.) \_\_\_\_\_

No allowable will be assigned to the well until all interests have been consolidated (by communitization, unitization, forced-pooling, or otherwise) or until a non-standard unit, eliminating such interests, has been approved by the Commission.



CERTIFICATION

I hereby certify that the information contained herein is true and complete to the best of my knowledge and belief.

*D. H. Maroncelli*  
Name

**D. H. Maroncelli**  
Position

**Petroleum Engineer**  
Company

**Northwest Pipeline Corp.**  
Date

**August 25, 1975**

I hereby certify that the well location shown on this plat was plotted from field notes of actual surveys made by me or under my supervision, and that the same is true and correct to the best of my knowledge and belief.

Date Surveyed  
**August 23, 1975**

Registered Professional Engineer  
and/or Land Surveyor

*Fred B. Kerr Jr.*  
**Fred B. Kerr Jr.**

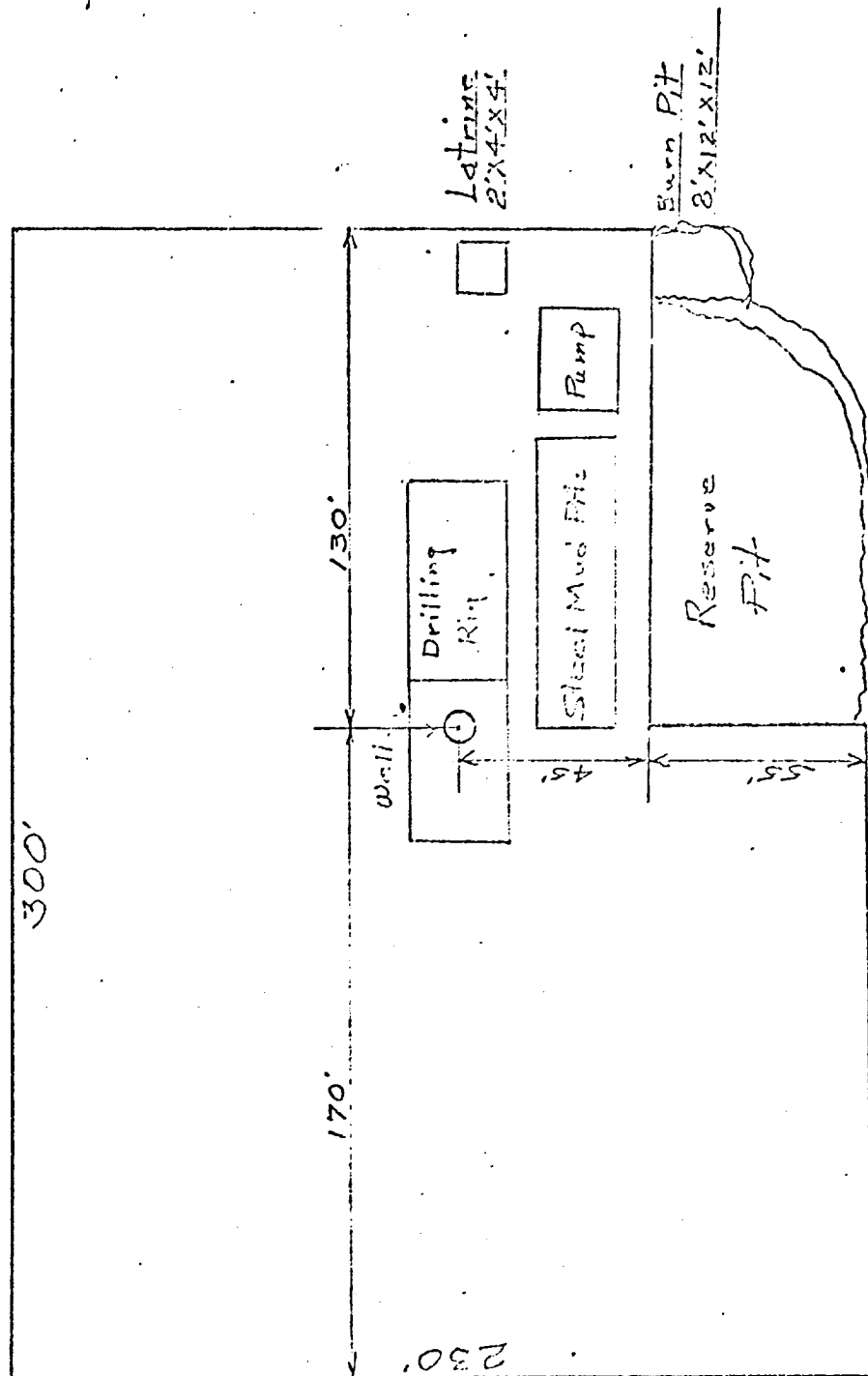
Certificate No.

**3950**



# LOCATION AND EQUIPMENT LAYOUT

SAN JUAN 30-5 # 2R



Northwest Pipeline Corporation



PRODUCTION & DRILLING  
P. O. BOX 90  
FARMINGTON, NEW MEXICO 87401

5111-34-75

August 28, 1975



United States Geological Survey  
P. O. Box 1809  
Durango, Colorado 81301

Re: Application for "Permit to Drill"  
San Juan 30-5 Unit #2R  
Sec. 29, T30N, R5W  
Rio Arriba County, New Mexico

Gentlemen:

Information regarding existing roads, pipelines, flowlines, etc., relative to the above well location is included on the enclosed attachments.

Water for drilling and completion operations will be obtained from the San Juan 29-6 Water Well #1 located in the NW/4 SW/4 Sec. 28, T29N, R6W.

Waste disposal will be in the burn pit, latrine or reserve pit.

There will be no camp or airstrip associated with drilling this well.

Upon completion or abandonment of this well, the location will be cleaned, leveled, and a dry hole marker placed, if applicable.

Northwest Pipeline Corporation

*D. H. Maroncelli*

D. H. Maroncelli  
Petroleum Engineer

DHM/mag  
xc: File