

OIL CONSERVATION COMMISSION  
Cuyaca DISTRICT

OIL CONSERVATION COMMISSION  
BOX 2088  
SANTA FE, NEW MEXICO

DATE 1-31-78

RE: Proposed MC \_\_\_\_\_  
Proposed DHC \_\_\_\_\_  
Proposed NSL ✓ \_\_\_\_\_  
Proposed SWD \_\_\_\_\_  
Proposed WFX \_\_\_\_\_  
Proposed PMX \_\_\_\_\_

*Dick Stamets*

Gentlemen:

I have examined the application dated 11-15-77  
for the Northwest Pipeline Corp. San Juan 30.5 Unit # 68  
Operator Lease and Well No. Unit, S-T-R  
L-25-30N-5W  
and my recommendations are as follows:

Approve

Yours very truly,

AR Kendrick

Northwest Pipeline Corporation



PRODUCTION & DRILLING  
P. O. BOX 90  
FARMINGTON, NEW MEXICO 87401

5113-37-77

November 15, 1977

Mr. Joe Ramey  
Secretary-Director  
NMOCC  
P.O. Box 2088  
Santa Fe, New Mexico 87501

Re: "Application for Permit to Drill"  
at an unorthodox location for the  
San Juan 30-5 Unit #68

Dear Sir:

Attached, you will find the dedication plat with the topography sketched on it. As you can see, in order for the location to be orthodox, it would have to be either on the edge of a cliff or in the bottom of a wash.

In addition, Northwest Pipeline Corporation is the operator of Section 26, located west of Section 25, so no notification of offset operators is needed as required in rule 104 of the New Mexico Oil Conservation Commission Rules and Regulations. Also, you will find a lease holders plat attached.

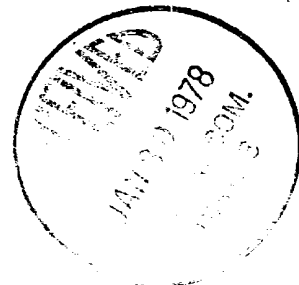
Thank you for your cooperation.

Sincerely,

D.E. Richardson

DER/ch

xc: File



NEW MEXICO OIL CONSERVATION COMMISSION  
WELL LOCATION AND ACREAGE DEDICATION PLAT

Form C-102  
Supersedes C-128  
Effective 1-1-65

All distances must be from the corner boundaries of the Section.

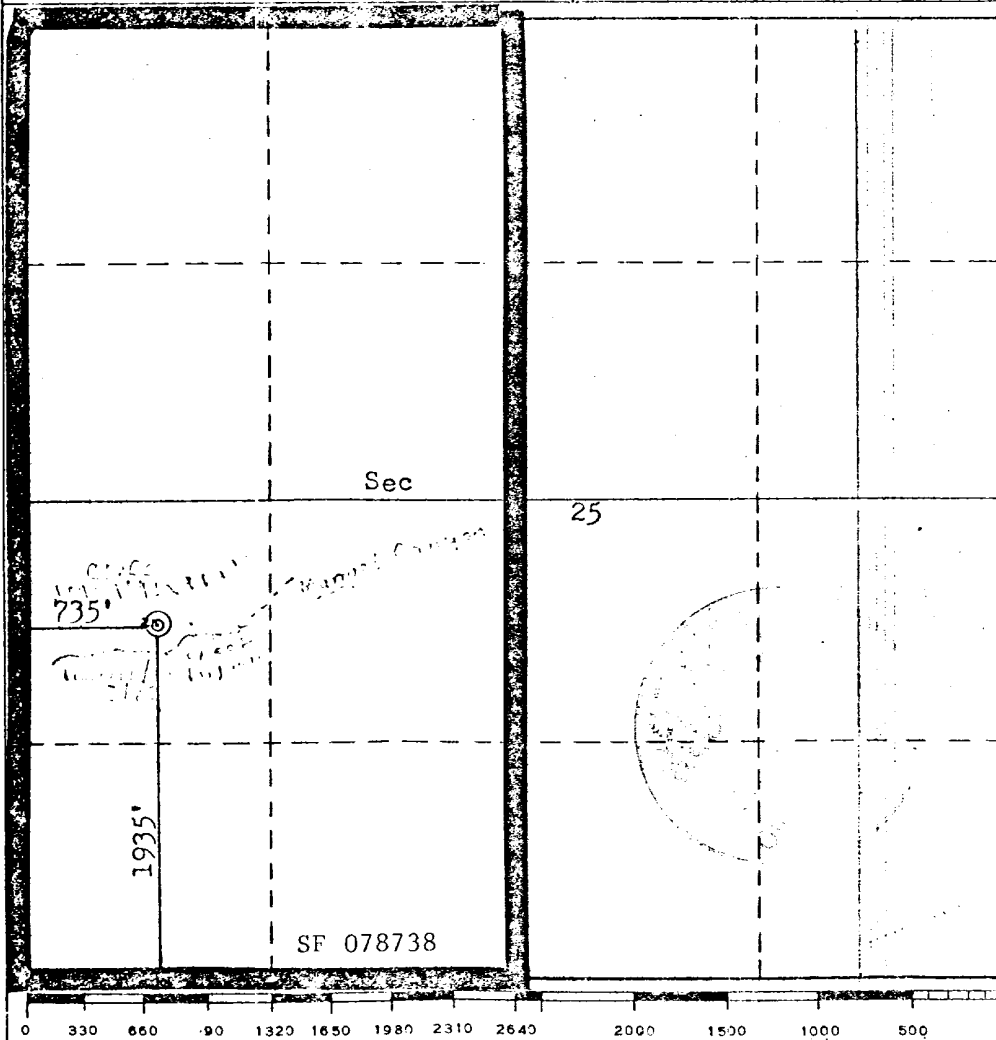
|   |  |                        |                                    |                                       |                       |
|---|--|------------------------|------------------------------------|---------------------------------------|-----------------------|
| Operator<br><b>Northwest Pipeline Corporation</b>   |  |                        | Lease<br><b>San Juan 30-5 Unit</b> |                                       | Well No.<br><b>68</b> |
| Unit Letter<br><b>L</b>   | Section<br><b>25</b>                     | Township<br><b>30N</b> | Range<br><b>5W</b>                 | County<br><b>Rio Arriba</b>           |                       |
| Actual Footage Location of Well:<br><b>1935</b> feet from the <b>South</b> line and <b>735</b> feet from the <b>West</b> line |  |                        |                                    |                                       |                       |
| Ground Level Elev.<br><b>6656</b>   | Producing Formation<br><b>Mesa Verde</b> | Pool<br><b>Blanco</b>  |                                    | Dedicated Acreage<br><b>320</b> Acres |                       |

1. Outline the acreage dedicated to the subject well by colored pencil or hachure marks on the plat below.
2. If more than one lease is dedicated to the well, outline each and identify the ownership thereof (both as to working interest and royalty).
3. If more than one lease of different ownership is dedicated to the well, have the interests of all owners been consolidated by communitization, unitization, force-pooling, etc?

☐ Yes ☐ No If answer is "yes," type of consolidation \_\_\_\_\_

If answer is "no," list the owners and tract descriptions which have actually been consolidated. (Use reverse side of this form if necessary.) \_\_\_\_\_

No allowable will be assigned to the well until all interests have been consolidated (by communitization, unitization, forced-pooling, or otherwise) or until a non-standard unit, eliminating such interests, has been approved by the Commission.



CERTIFICATION

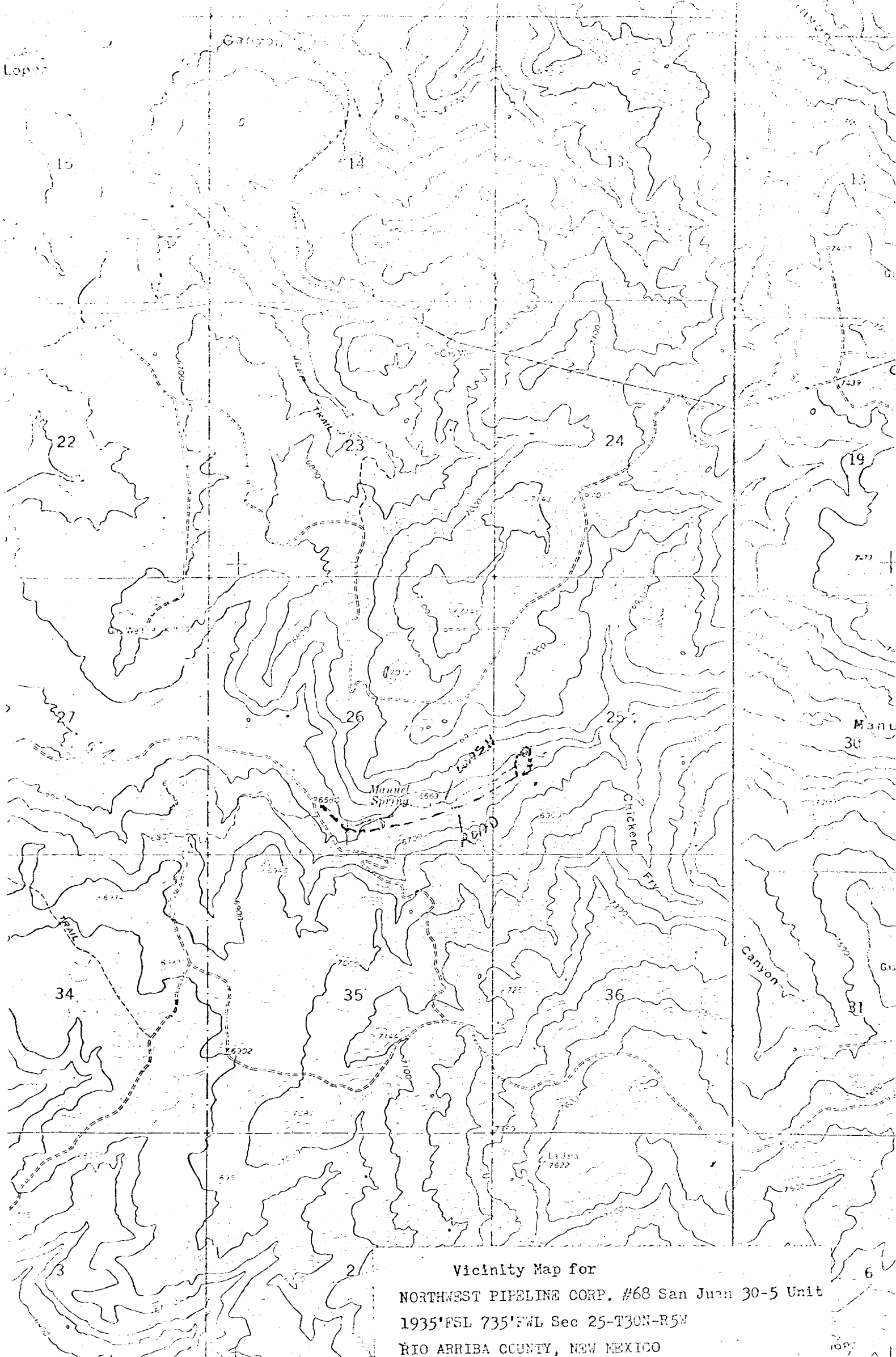
I hereby certify that the information contained herein is true and complete to the best of my knowledge and belief.

Name  
**D.E. Richardson**  
Position  
**Drilling Engineer**  
Company  
**Northwest Pipeline Corp.**  
Date  
**November 8, 1977**

I hereby certify that the well location shown on this plat was plotted from field notes of actual surveys made by me or under my supervision, and that the same is true and correct to the best of my knowledge and belief.

Date Surveyed  
**October 23, 1977**  
Registered Professional Engineer and/or Land Surveyor  
**Fred B. Ferr Jr.**  
Certificate No.  
**3950**



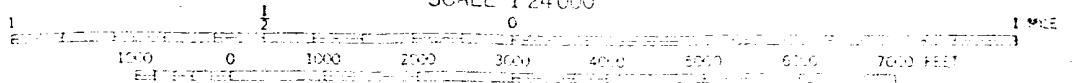


Vicinity Map for  
NORTHWEST PIPELINE CORP. #68 San Juan 30-5 Unit  
1935'PSL 735'FWL Sec 25-T30N-R5W  
RIO ARriba COUNTY, NEW MEXICO

10,000 FEET 291 292

173

4557 111 NE  
SCALE 1:24000



## OPERATIONS PLAN

San Juan 30-5 Unit #68

I. LOCATION: 1935' FSL & 735' FSL  
Sec. 25, T30N, R5W  
Rio Arriba County, N.M.

LEASE NUMBER: SF 078738

FIELD: Blanco Mesa Verde

ELEVATION: 5970' GR

### II. GEOLOGY:

#### A. Formation Tops:

|                  |       |                |       |
|------------------|-------|----------------|-------|
| Ojo Alamo:       | 2778' | Cliff House:   | 5378' |
| Kirtland:        | 2948' | Menefee:       | 5595' |
| Fruitland:       | 3173' | Point Lookout: | 5773' |
| Pictured Cliffs: | 3406' | Total Depth:   | 5970' |
| Lewis:           | 3725' |                |       |

B. Logging Program: Gamma Ray-Induction and Density at T.D.

C. Coring Program: None

D. Natural Gauges: Gauge at last connection above 5595', 5773' and at total depth. Gauge any noticeable increases in gas flow at depth other than those noted above.

### III. DRILLING:

A. Anticipated starting date and duration of activities:

B. BOP: Blind rams and pipe rams, 10', 900 series, double gate, rated at 3000 PSI.

#### C. Mud Program:

a). Spud Mud: Water, lime and gel.

b) Surface to 3725'.

Viscosity: 32-38 sec/qt.

Weight: 8.8-9.2 #/gal.

Water Loss: 8-20 cc

Ph: 8.5-9.5

c) From 3725' to 3925'.

Viscosity: 36-45 sec/qt.

Weight: 8.5-9.5 #/gal.

Water Loss: 8-20 cc

Ph: 8.5-9.5

d) from 3925' to total depth with gas.

### IV. MATERIALS:

#### A. Casing Program:

| Hole Size | Depth O.H. | Casing Size | Wt. & Grade | Depth Set   |
|-----------|------------|-------------|-------------|-------------|
| 12 14/16" | 200'       | 9 5/8"      | 32.3# H-40  | 200'        |
| 8 3/4"    | 3925'      | 7"          | 20# K-55    | 3925'       |
| 6 1/4"    | 5970'      | 4 1/2"      | 10.5# K-55  | 3725"-5970' |

#### B. Float Equipment:

a) Surface casing 9 5/8" - B & W Regular Pattern Shoe.

b) Intermediate Casing 7" - Dowell guide shoe (Code #50101-070) and self fill insert float collar (Code #53003-070). Seven (7) centralizers (Code #56011-070) spaced every other joint above the shoe.

B. Float Equipment Continued

Place float collar one joint above shoe.

- c) Liner 4 1/2" - Larkin geyser shoe (Fig. 222) and Larkin flapper type float collar (Fig. 404). Brown liner hanger with neoprene pack off.

- C. Tubing Program: 5950', of 2 3/8", 4.7#, EUE, K-55 tubing with seating nipple on top of bottom joint. Expendable check valve on bottom.

- D. Well Head Equipment: Gray well head. Gray representative to set slips and make cut off.

V. CEMENTING:

- A. Surface Casing 9 5/8" - Use 125 sks. Class "B" with 1/4# gel flake per sack and 3% CaCl (100% excess to circulate). WOC 12 hours. Test surface casing to 600 PSI for 30 minutes.

- B. Intermediate Casing 7" - Use 100 sacks Class "B" 65/35 poz with 12% gel and 15.52 gal. water per sack. Tail in with 50 sacks Class "B" with 2% CaCl (65% excess to cover Ojo Alamo). WOC 12 hours. Run temp. survey after 8 hours. Test casing to 600 PSI.

- C. Production Liner 4 1/2" - Use 210 sacks Class "B" with 4% gel and 1/4 cu. ft. of fine Gilsonite per sack. Precede cmt. with 20 bbls. water mixed with 3 sks. gel (70% excess to circulate liner). Set liner pack off and reverse out excess cmt. Run 6 1/4" bit to top of liner and pressure test (test 12 hours after plug is down). Lay down DP and run 3 7/8" bit on 2 3/8" EUE tubing to clean out liner. Perforate 18 hours after plug is down.

DER/ch

UNITED STATES  
DEPARTMENT OF THE INTERIOR  
GEOLOGICAL SURVEY

APPLICATION FOR PERMIT TO DRILL, DEEPEN, OR PLUG BACK

1a. TYPE OF WORK  
DRILL ☒ DEEPEN ☐ PLUG BACK ☐

b. TYPE OF WELL  
OIL WELL ☐ GAS WELL ☒ OTHER ☐ SINGLE ZONE ☐ MULTIPLE ZONE ☐

2. NAME OF OPERATOR  
Northwest Pipeline Corporation

3. ADDRESS OF OPERATOR  
P.O. Box 90 Farmington, New Mexico 87401

4. LOCATION OF WELL (Report location clearly and in accordance with any State requirements.)  
At surface  
1935' FSL & 735' FWL  
At proposed prod. zone  
As Above

14. DISTANCE IN MILES AND DIRECTION FROM NEAREST TOWN OR POST OFFICE\*  
N/A

15. DISTANCE FROM PROPOSED\*  
LOCATION TO NEAREST  
PROPERTY OR LEASE LINE, FT.  
(Also to nearest dog, unit line, if any)  
735'

16. NO. OF ACRES IN LEASE  
N/A

17. NO. OF ACRES ASSIGNED  
TO THIS WELL  
320

18. DISTANCE FROM PROPOSED LOCATION\*  
TO NEAREST WELL, DRILLING COMPLETED,  
OR APPLIED FOR, ON THIS LEASE, FT.  
N/A

19. PROPOSED DEPTH  
5970

20. ROTARY OR CABLE TOOLS  
Rotary

21. ELEVATIONS (Show whether D.P., RT., GR., etc.)  
6656 GR

22. APPROX. DATE WORK WILL START\*  
1/1/78

5. LEASE DESIGNATION AND SERIAL NO.  
SF 078738

6. IF INDIAN, ALBERTA, OR TRIBE NAME

7. UNIT AGREEMENT NAME  
San Juan 30-5 Unit

8. FARM OR LEASE NAME  
San Juan 30-5 Unit

9. WELL NO.  
68

10. FIELD AND POOL, OR WILDCAT  
Blanco Mesa Verde

11. SEC., T., R., E. OR S.E.,  
AND SURVEY OR AREA  
SEC 25 T30N R5W

12. COUNTY OR PARISH  
Rio Arriba

13. STATE  
NM

PROPOSED CASING AND CEMENTING PROGRAM

| SIZE OF HOLE | SIZE OF CASING | WEIGHT PER FOOT | SETTING DEPTH | QUANTITY OF CEMENT |
|--------------|----------------|-----------------|---------------|--------------------|
| 12 1/4       | 9 5/8          | 32.3#           | 200'          | 125 sks            |
| 8 3/4        | 7              | 20 #            | 3925          | 150 sks            |
| 6 1/4        | 4 1/2          | 10.5#           | 3725-5970     | 210 sks            |

Selectively perforate and stimulate the Mesa Verde formation.  
A BOP will be installed after the surface casing has been run and cemented.  
All subsequent operations will be conducted through the BOP.  
The W/2 of section 25 is dedicated to this well gas is dedicated.

IN ABOVE SPACE DESCRIBE PROPOSED PROGRAM: If proposal is to deepen or plug back, give data on present productive zone and proposed new productive zone. If proposal is to drill or deepen directionally, give pertinent data on subsurface locations and measured and true vertical depths. Give blowout preventer program, if any.

24. SIGNED D. E. Richardson TITLE Drilling Engineer DATE 01-27-78  
(This space for Federal or State office use)

PERMIT NO. \_\_\_\_\_ APPROVAL DATE \_\_\_\_\_

APPROVED BY \_\_\_\_\_ TITLE \_\_\_\_\_ DATE \_\_\_\_\_  
CONDITIONS OF APPROVAL, IF ANY:

\*See Instructions On Reverse Side