

UNITED STATES
DEPARTMENT OF THE INTERIOR
GEOLOGICAL SURVEY

APPLICATION FOR PERMIT TO DRILL, DEEPEN, OR PLUG BACK

| | | |
|------------------------------------------------------------------------------------------------------------------------------------------------------|---------------------------------------------|---------------------------------------------------------------------------------------|
| 1a. TYPE OF WORK DRILL <input checked="" type="checkbox"/> DEEPEN <input type="checkbox"/> PLUG BACK <input type="checkbox"/> | | 5. LEASE DESIGNATION AND SERIAL NO. NM 010444 |
| b. TYPE OF WELL OIL WELL <input type="checkbox"/> GAS WELL <input checked="" type="checkbox"/> OTHER <input type="checkbox"/> | | 6. IF INDIAN, ALLOTTEE OR TRIBE NAME |
| 2. NAME OF OPERATOR El Paso Natural Gas Company | | 7. UNIT AGREEMENT NAME San Juan 30-6 Unit |
| 3. ADDRESS OF OPERATOR PO Box 990, Farmington, NM 87401 | | 8. FARM OR LEASE NAME San Juan 30-6 Unit |
| 4. LOCATION OF WELL (Report location clearly and in accordance with any State requirements.)* At surface 1810'S, 1750'E At proposed prod. zone | | 9. WELL NO. 28A |
| 14. DISTANCE IN MILES AND DIRECTION FROM NEAREST TOWN OR POST OFFICE* 7 miles North of Gobernador School | | 10. FIELD AND POOL, OR WILDCAT Blanco Mesa Verde |
| 15. DISTANCE FROM PROPOSED* LOCATION TO NEAREST PROPERTY OR LEASE LINE, FT. (Also to nearest drlg. unit line, if any.) 1800' | 16. NO. OF ACRES IN LEASE Unit 320.00 | 11. SEC., T., R., M., OR BLK. AND SURVEY OR AREA Sec. 33, T-30-N, R-6-W NMPM |
| 18. DISTANCE FROM PROPOSED LOCATION* TO NEAREST WELL, DRILLING, COMPLETED, OR APPLIED FOR, ON THIS LEASE, FT. 1600' | 19. PROPOSED DEPTH 5925' | 12. COUNTY OR PARISH Rio Arriba |
| 21. ELEVATIONS (Show whether DF, RT, GR, etc.) 6348' GL | | 13. STATE NM |
| 22. APPROX. DATE WORK WILL START* | | |

| PROPOSED CASING AND CEMENTING PROGRAM | | | | |
|---------------------------------------|----------------|-----------------|---------------|------------------------------|
| SIZE OF HOLE | SIZE OF CASING | WEIGHT PER FOOT | SETTING DEPTH | QUANTITY OF CEMENT |
| 13 3/4" | 9 5/8" | 32.3# | 200' | 224 cu.ft. to circulate |
| 8 3/4" | 7" | 20.0# | 3670' | 297 cu.ft. to cover Ojo Alai |
| 6 1/4" | 4 1/2" liner | 10.5# | 3520-5925' | 419 cu.ft. to fill to 3520' |

Selectively perforate and sandwater fracture the Mesa Verde formation.

A 3000 psi WP and 6000 psi test double gate preventer equipped with blind and pipe rams will be used for blow out prevention on this well.

This gas is dedicated.

The E/2 of Section 33 is dedicated to this well.

IN ABOVE SPACE DESCRIBE PROPOSED PROGRAM: If proposal is to deepen or plug back, give data on present productive zone and proposed new productive zone. If proposal is to drill or deepen directionally, give pertinent data on subsurface locations and measured and true vertical depths. Give blowout preventer program, if any.

24. SIGNED A. P. Buiss TITLE Drilling Clerk DATE March 30, 1970

(This space for Federal or State office use)

PERMIT NO. _____ APPROVAL DATE _____

APPROVED BY _____ TITLE _____ DATE _____
CONDITIONS OF APPROVAL, IF ANY:

Alaf

*See Instructions On Reverse Side

**NEW MEXICO OIL CONSERVATION COMMISSION
WELL LOCATION AND ACREAGE DEDICATION PLAT**

Form C-102
Supersedes C-128
Effective 1-1-65

All distances must be from the outer boundaries of the Section.

| | | | | | |
|----------------------------------------------------------------------------------------------------------------------------------|------------------------------------------|------------------------|------------------------------------------------|---------------------------------------------|------------------------|
| Operator El Paso Natural Gas Company | | | Lease San Juan 30-6 Unit (NM-010444) | | Well No. 28A |
| Unit Letter J | Section 33 | Township 30N | Range 6W | County Rio Arriba | |
| Actual Footage Location of Well: 1810 feet from the South line and 1750 feet from the East line ✓ | | | | | |
| Ground Level Elev. 6348 | Producing Formation Mesa Verde | | Pool Blanco Mesa Verde ✓ | Dedicated Acreage: 320.00 Acres ✓ | |

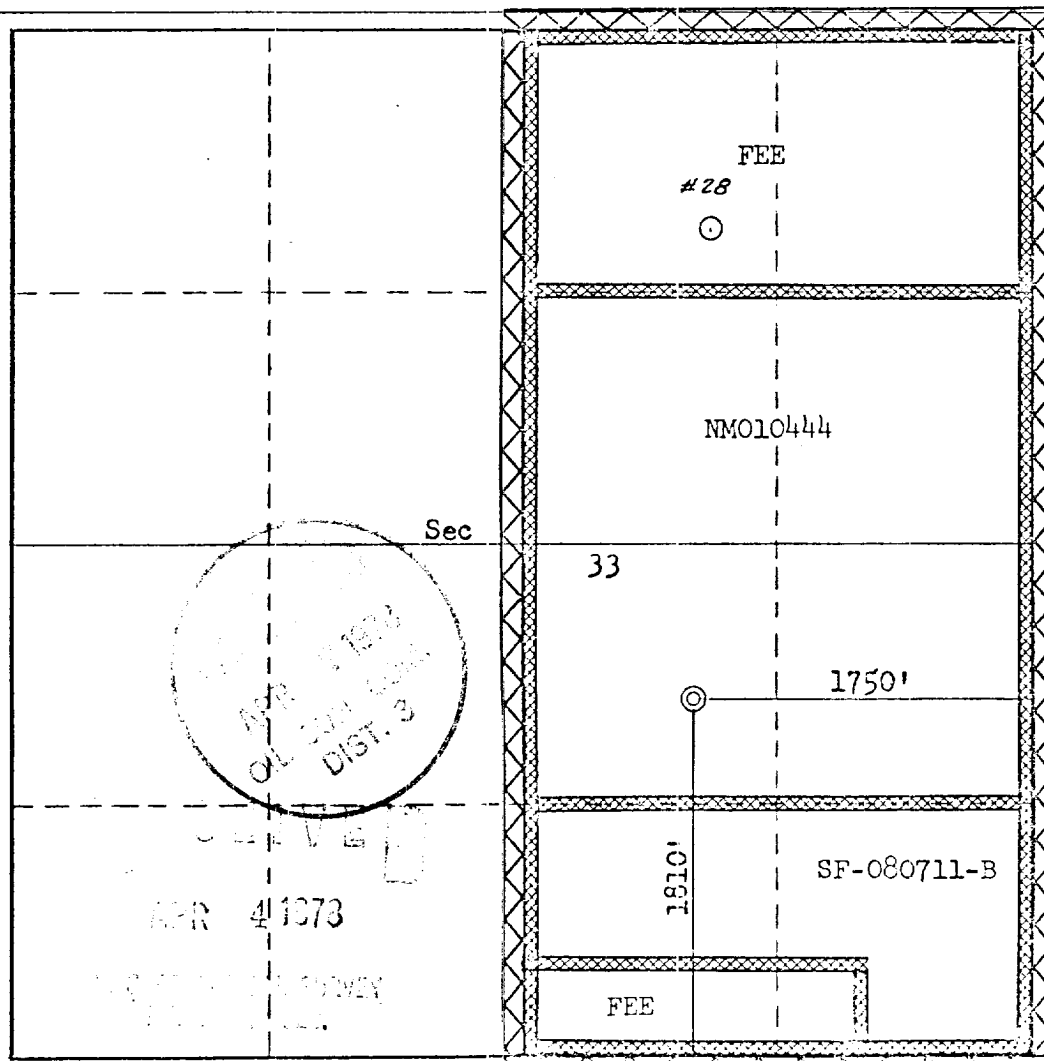
1. Outline the acreage dedicated to the subject well by colored pencil or hachure marks on the plat below.
2. If more than one lease is dedicated to the well, outline each and identify the ownership thereof (both as to working interest and royalty).
3. If more than one lease of different ownership is dedicated to the well, have the interests of all owners been consolidated by communitization, unitization, force-pooling, etc?

Unitization

☒ Yes ☐ No If answer is "yes," type of consolidation _____

☒ X
If answer is "no," list the owners and tract descriptions which have actually been consolidated. (Use reverse side of this form if necessary.) _____

No allowable will be assigned to the well until all interests have been consolidated (by communitization, unitization, forced-pooling, or otherwise) or until a non-standard unit, eliminating such interests, has been approved by the Commission.



CERTIFICATION

I hereby certify that the information contained herein is true and complete to the best of my knowledge and belief.

A. P. Lucas

Name

Drilling Clerk

Position

El Paso Natural Gas

Company

March 30, 1978

Date

I hereby certify that the well location shown on this plat was plotted from field notes of actual surveys made by me or under my supervision, and that the same is true and correct to the best of my knowledge and belief.

Date Surveyed

March 9, 1978

Registered Professional Engineer and/or Land Surveyor

Fred B. Kerr Jr.
Fred B. Kerr Jr.

Certificate No.

3950

0 330 660 990 1320 1650 1980 2310 2640 2000 1500 1000 500 0

Multi-Point Surface Use Plan

San Juan 30-6 Unit #28A

1. Existing Road - Please refer to Map No. 1 which shows the existing roads. New roads which will be required have been marked on this map. All existing and new roads will be properly maintained during the duration of this project.
2. Planned Access Roads - Please refer to Map No. 1. The grade of the access roads will be consistent with that of the local terrain. The road surface will not exceed twenty feet (20') in width. Upon completion of the project, the access road will be adequately drained to control soil erosion. Drainage facilities may include ditches, water bars, culverts or any other measure deemed necessary by trained Company personnel to insure proper drainage. Gates and/or cattleguards will be installed if necessary.
3. Location of Existing Wells - Please refer to Map No. 2
4. Location of Tank Batteries, Production Facilities, and Production Gathering and Service Lines - Please refer to Maps No. 1 and No. 2. Map No. 2 shows the existing gas gathering lines. Map No. 1 shows the existing roads and new proposed access roads. All known production facilities are shown on these two maps.
5. Location and Type of Water Supply - Water for the proposed project will be obtained from a water hole located SE 10-30-6 (Gomez Water Hole)
6. Source of Construction Materials - No additional materials will be required to build either the access road or the proposed location.

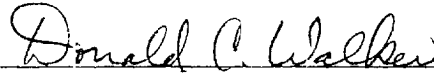
APR 4 1973

7. Methods of Handling Waste Materials - All garbage and trash materials will be put into a burn pit shown on the attached Location Plat No. 1. When clean-up operations are begun on the proposed project, the burn pit with its refuse will be buried to a depth of at least three feet (3'). A latrine, the location of which is also shown on Plat No. 1 will be provided for human waste. If large amounts of liquids are left in the reserve pit after completion of the project, the pit will be fenced until the liquids have had adequate time to dry. The location clean-up will not take place until such time as the reserve pit can be properly covered over to prevent run-off from carrying any of these materials into the watershed. No earthen pit will be located on natural drainages; all earthen pits will be so constructed as to prevent leakage from occurring.
8. Ancillary Facilities - No camps or airstrips will be associated with this project.
9. Wellsite Layout - Please refer to the attached Plat No. 1.
10. Plans for Restoration of the Surface - After completion of the proposed project, the location will be cleaned and leveled. The location will be left in such a condition that will enable reseeding operations to be carried out. Seed Mixture #1 will be used. The reseeding operation will be performed during the time period set forth by the regulatory body. The location production equipment will be painted brown (Federal Standard #595-30318)
11. Other Information - The terrain is rolling hills and high sand stone ledges with sage brush growing. Cattle graze the proposed project site.

APR 4 1973

12. Operator's Representative - W. D. Dawson, Post Office Box 990,
Farmington, New Mexico 87401

13. Certification - I hereby certify that I, or persons under my direct supervision, have inspected the proposed drillsite and access route; that I am familiar with the conditions which presently exist; that the statements made in this plan are, to the best of my knowledge, true and correct; and, that the work associated with the operations proposed herein will be performed by El Paso Natural Gas Company and its contractors and sub-contractors in conformity with this plan and the terms and conditions under which it is approved.



D. C. Walker
Project Drilling Engineer

March 31, 1978

DCW:pb

APR 4 1978

March 30, 1978

Operations Plan
San Juan 30-6 Unit #28A

I. Location: 1810'S, 1750'E, Section 33, T-30-N, R-6-W, Rio Arriba County, NM

Field: Blanco Mesa Verde

Elevation: 6348'GL

II. Geology:

| | | | | |
|--------------------|------------|----------|---------------|-------|
| A. Formation Tops: | Surface | San Jose | Lewis | 3470' |
| | Ojo Alamo | 2350' | Mesa Verde | 5135' |
| | Kirtland | 2545' | Menefee | 5175' |
| | Fruitland | 2935' | Point Lookout | 5473' |
| | Pic.Cliffs | 3310' | Total Depth | 5925' |

B. Logging Program: GR-Ind. and GR-Density at Total Depth.

C. Coring Program: none

D. Natural Gauges: 5125', 5165', 5465' and at Total Depth.
Also gauge any noticeable increase in gas. Record all gauges in daily drilling report and on morning report.

III. Drilling:

A. Mud Program: mud from surface to 3670'. Gas from intermediate casing to Total Depth.

IV. Materials:

| A. Casing Program: | Hole Size | Depth | Casing Size | Wt.&Grade |
|--------------------|-----------|------------|-------------|------------|
| | 13 3/4" | 200' | 9 5/8" | 32.3# H-40 |
| | 8 3/4" | 3670' | 7" | 20.0# K-55 |
| | 6 1/4" | 3520-5925' | 4 1/2" | 10.5# K-55 |

B. Float Equipment: 9 5/8" surface casing - Larkin guide shoe (fig. 102)
7" intermediate casing - Dowell guide shoe (fig. 50101) and Dowell self-fill insert float valve (fig. 53003), 5 B&W stabilizers (Prod. No. 637085) every other joint above shoe. Run float two joints above shoe.

4 1/2" liner - 4 1/2" liner hanger with neoprene packoff. Larkin geyser shoe (fig. 222) and Larkin flapper type float collar (fig. 404 M&F).

C. Tubing: 5925' of 2 3/8", 4.7#, J-55 8rd EUE tubing with a common pump seating nipple above perforated pup joint with bull plugged full joint for mud anchor on bottom.

D. Wellhead Equipment: 10" 900 x 9 5/8" casing head. 10" 900 x 6" 900 xmas tree.

APR 4 1978

W. J. CURVEY
J. L.

Operations Plan - San Juan 30-6 Unit #28A

V. Cementing:

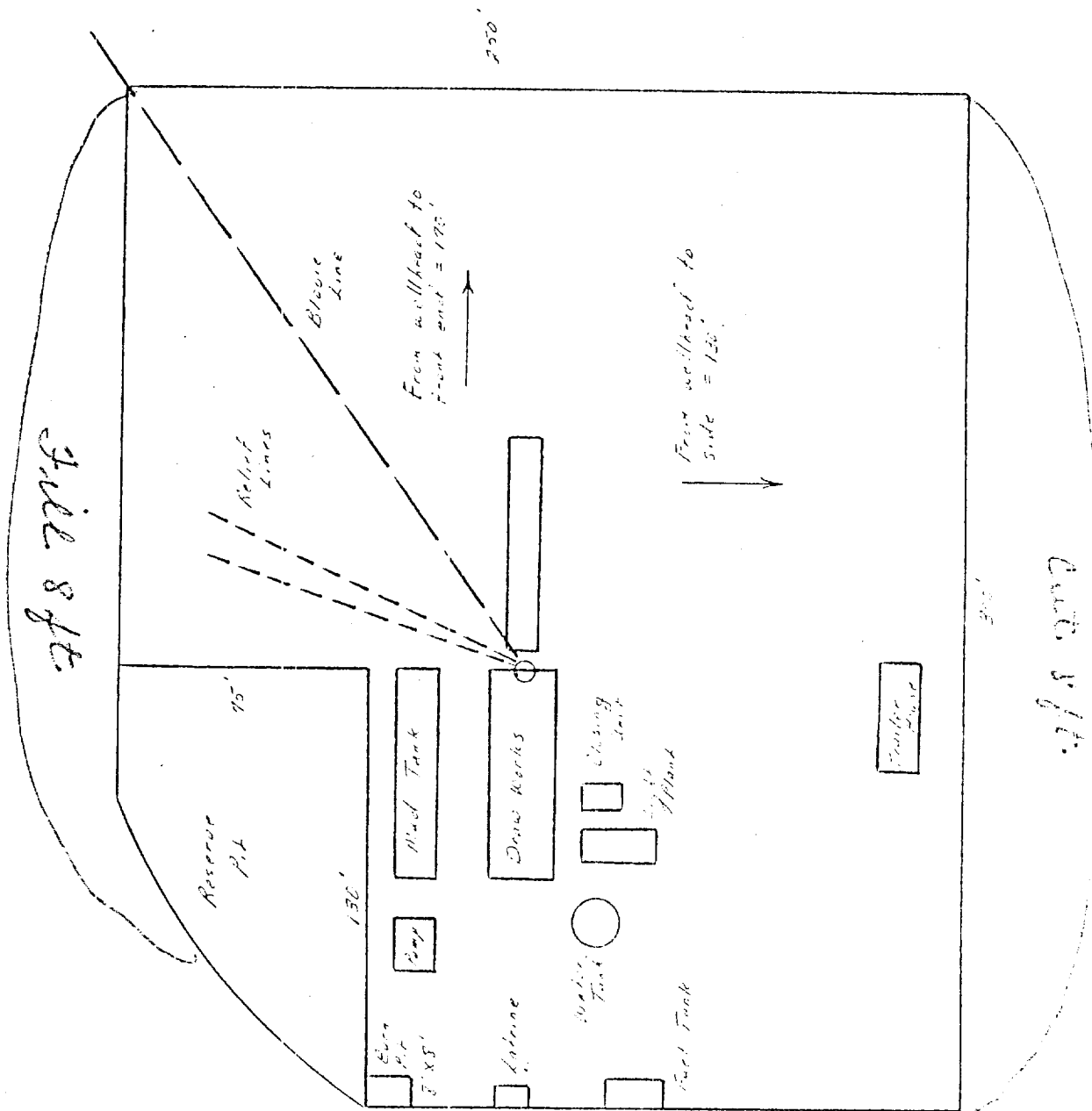
9 5/8" surface casing - use 190 sks. of Class "B" cement with 1/4# gel-flake per sack and 3% calcium chloride (224 cu.ft. of slurry, 100% excess to circulate to surface). WOC 12 hours. Test casing to 600#/30 minutes.

7" intermediate casing - use 111 sks. of 65/35 Class "B" Poz with 6% gel and 2% calcium chloride (8.3 gallons of water per sack) followed by 100 sks. of Class "B" with 2% calcium chloride (297 cu.ft. of slurry, 50% excess to cover Cjo Alamo). Run temperature survey at 8 hours. WOC 12 hours. Test casing to 1200#/30 minutes.

4 1/2" liner - precede cement with 20 barrels of gel water (2 sks. gel) Cement with 302 sks. of Class "B" cement with 4% gel, 1/4 cu.ft. of fine gilsonite per sack and 0.6% Halad-9 (419 cu.ft. of slurry, 70% excess to circulate liner). WOC 18 hours.

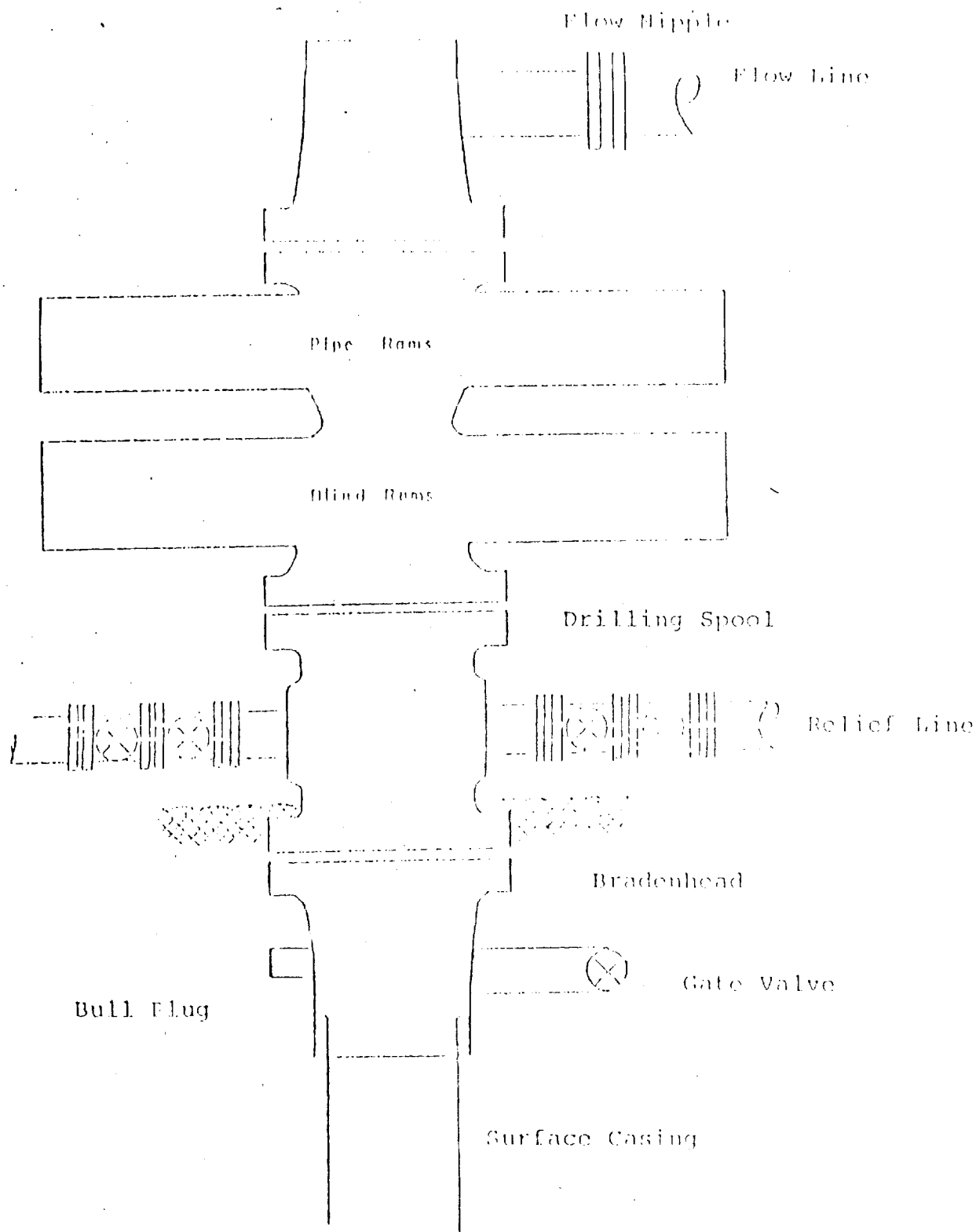
11/17/79
4193

El Paso Natural Gas Company
 Typical Location Plot for Mesa Verde and Dakota Wells



4 1973

Typical B.O.P. Installation for Mesa Verde Well



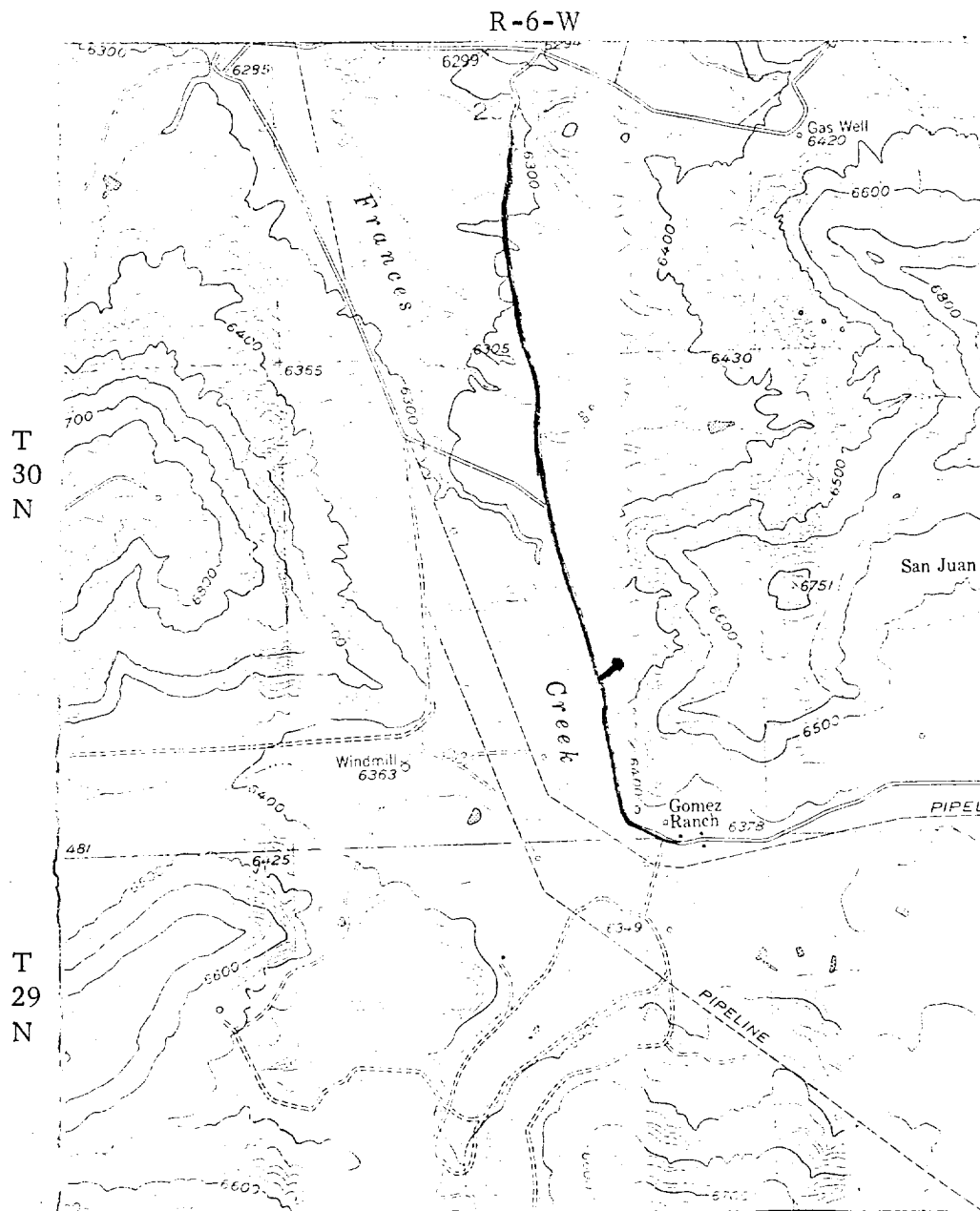
Series 900 Double Gate BOP, rated
at 3000 psi Working Pressure
When gas drilling operations begin a Shaffer type 50
or equivalent rotating head is installed on top of the
flow nipple and the flow line is converted into a blowie line

APR 4 1973

EL PASO NATURAL GAS COMPANY

San Juan 3G-6 Unit #28A

NWSE 33-30-6



MAP #1

LEGEND OF RIGHT-OF-WAYS

| | |
|--------------------------|-------|
| EXISTING ROADS | ————— |
| EXISTING PIPELINES | + + + |
| EXISTING ROAD & PIPELINE | + + + |
| PROPOSED ROADS | ————— |
| PROPOSED PIPELINES | + + + |
| PROPOSED ROAD & PIPELINE | + + + |

APR 4 1973

EL PASO NATURAL GAS COMPANY

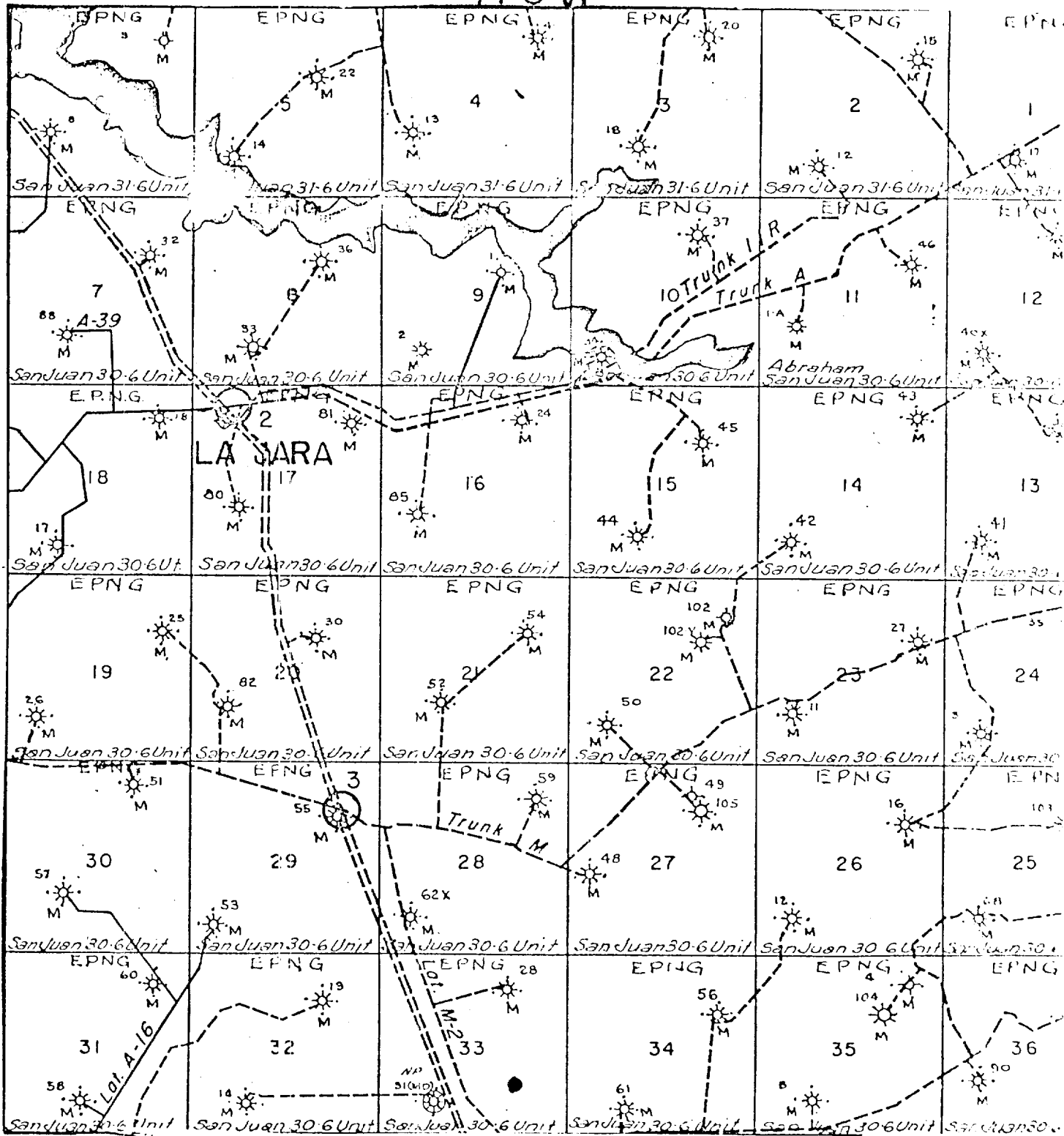
EL PASO NATURAL GAS COMPANY.

San Juan 30-6 Unit #28A

NWSE 33-30-6

R 6 W

T
30
N



4 1973

MAP #2

Proposed Location



LTR



Job separation sheet