

Unmanned Aeronautics
UNITED STATES

DEPARTMENT OF THE INTERIOR
GEOLOGICAL SURVEY

APPLICATION FOR PERMIT TO DRILL, DEEPEN, OR PLUG BACK

1. TYPE OF WORK
DRILL ☒ DEEPEN ☐ PLUG BACK ☐

2. TYPE OF WELL
OIL WELL ☐ GAS WELL ☒ OTHER ☐ SINGLE ZONE ☒ MULTIPLE ZONE ☐

3. NAME OF OPERATOR
Northwest Pipeline Corporation

4. ADDRESS OF OPERATOR
P.O. Box 90, Farmington, New Mexico 87401

5. LOCATION OF WELL (Report location clearly and in accordance with any State requirements.)
At surface 810' FSL & 975' FWL Sec 9 T30N R5W
At proposed prod. zone Same as above

6. DISTANCE IN MILES AND DIRECTION FROM NEAREST TOWN OR POST OFFICE*
25 Miles East of Navajo Dam.

7. DISTANCE FROM PROPOSED* LOCATION TO NEAREST PROPERTY OR LEASE LINE, FT.
(Also to nearest drilg. unit line, if any) 810'

8. DISTANCE FROM PROPOSED* LOCATION TO NEAREST WELL DRILLING COMPLETED, OR APPLIED FOR, ON THIS LEASE, FT.

9. ELEVATIONS (Show whether DF, RT, GR, etc.)
6318' GR

10. PROPOSED CASING AND CEMENTING PROGRAM

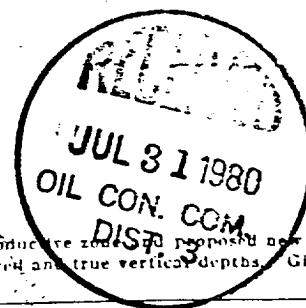
SIZE OF HOLE	SIZE OF CASING	WEIGHT PER FOOT	SETTING DEPTH	QUANTITY OF CEMENT
12-1/4"	9-5/8"	36#	350'	185 sks
8-3/4"	7"	20#	3500'	150 sks
6-1/4"	4-1/2"	10.5# & 11.6#	7800'	350 sks

Selectively perforate and stimulate the Dakota Formation.
Completion plans will be determined at Total Depth.

A BOP will be installed after the surface casing is set and cemented. All subsequent work will be conducted through the BOP's.

The South half of Section 9 is dedicated to this well.

Gas is dedicated.



IN ABOVE SPACE DESCRIBE PROPOSED PROGRAM: If proposal is to deepen or plug back, give data on present productive zone, and proposed new productive zone. If proposal is to drill or deepen directionally, give pertinent data on subsurface locations and measured and true vertical depths. Give blowout preventer program, if any.

24. SIGNED Paul C. Thompson TITLE Drilling Engineer DATE June 2, 1980
Paul C. Thompson
(This space for Federal or State office use)

PERMIT NO. _____ APPROVAL DATE _____

APPROVED BY _____ TITLE _____ DATE _____
CONDITIONS OF APPROVAL, IF ANY:

*See Instructions On Reverse Side

OIL CONSERVATION DIVISION

STATE OF NEW MEXICO
OIL AND MINERALS DEPARTMENTP. O. BOX 2088
SANTA FE, NEW MEXICO 87501Form C-107
Revised 10-1-78

All distances must be from the outer boundaries of the Section.

Operator NORTHWEST PIPELINE CORPORATION			Lease SAN JUAN 30-5 UNIT		Well No. 49
Unit Letter M	Section 9	Township 30N	Range 5W	County Rio Arriba	
Actual Footage Location of Well: 810 feet from the South line and 975 feet from the West line					
Ground Level Elev. 6318	Producing Formation Dakota		Pool Basin Dakota		Dedicated Acreage: 320 Acres

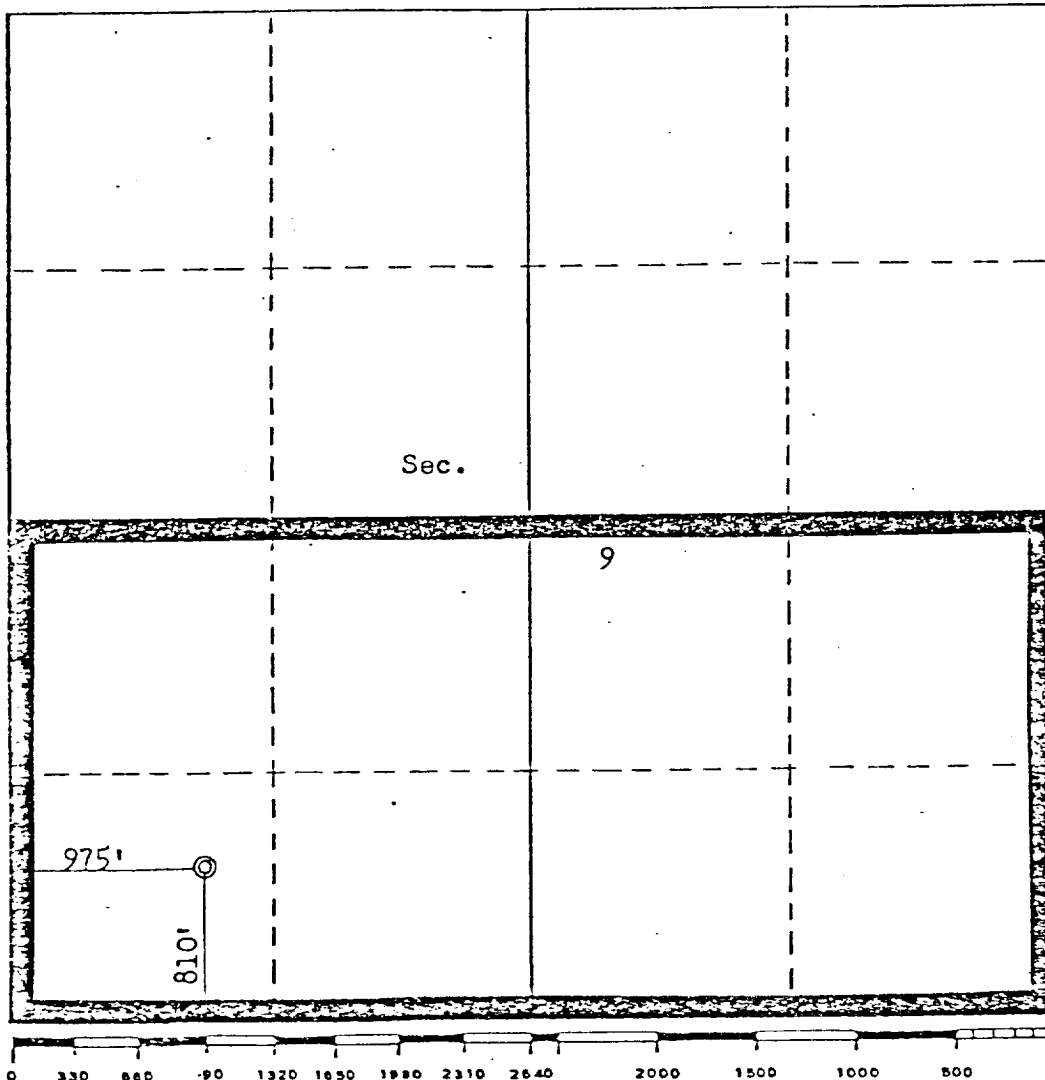
- Outline the acreage dedicated to the subject well by colored pencil or hachure marks on the plat below.
- If more than one lease is dedicated to the well, outline each and identify the ownership thereof (both as to working interest and royalty).
NORTHWEST PIPELINE CORPORATION
- If more than one lease of different ownership is dedicated to the well, have the interests of all owners been consolidated by communitization, unitization, force-pooling, etc?
APR 25 1980

☒ Yes ☐ No If answer is "yes," type of consolidation Unitization

PRODUCTION AND DRILLING

If answer is "no," list the owners and tract descriptions which have actually been consolidated. (Use reverse side of this form if necessary.)

No allowable will be assigned to the well until all interests have been consolidated (by communitization, unitization, forced-pooling, or otherwise) or until a non-standard unit, eliminating such interests, has been approved by the Commission.



CERTIFICATION

I hereby certify that the information contained herein is true and complete to the best of my knowledge and belief.

Paul C. Thompson

Name

Paul C. Thompson

Position

Drilling Engineer

Company

Northwest Pipeline Corp.

Date

April 29, 1980

I hereby certify that the well location shown on this plat was plotted from field notes of actual surveys made by me or under my supervision, and that the same is true and correct to the best of my knowledge and belief.

Date Surveyed

April 23, 1980

Registered Professional Engineer and Land Surveyor

Fred B. Kerr Jr.

Certificate No.

3950 B. KERR, JR.