

Amended Location

SUBMIT IN TRIPLICATE*
(Other instructions on
reverse side)Form approved
Budget Bureau No. 42-R1423.UNITED STATES
DEPARTMENT OF THE INTERIOR
GEOLOGICAL SURVEY

APPLICATION FOR PERMIT TO DRILL, DEEPEN, OR PLUG BACK

1a. TYPE OF WORK DRILL <input checked="" type="checkbox"/> DEEPEN <input type="checkbox"/> PLUG BACK <input type="checkbox"/>		5. LEASE DESIGNATION AND SERIAL NO. USA-SF-078997
b. TYPE OF WELL OIL WELL <input type="checkbox"/> GAS WELL <input checked="" type="checkbox"/> OTHER <input type="checkbox"/>		6. IF INDIAN, ALLOTTEE OR TRIBE NAME
2. NAME OF OPERATOR Northwest Pipeline Corporation		7. UNIT AGREEMENT NAME San Juan 30-5 Unit
3. ADDRESS OF OPERATOR P.O. Box 90, Farmington, New Mexico 87401		8. FARM OR LEASE NAME San Juan 30-5 Unit
4. LOCATION OF WELL (Report location clearly and in accordance with any State requirements.) At surface 810' FSL & 875' FWL Sec 9 T30N R5W At proposed prod. zone Same as above		9. WELL NO. #49
14. DISTANCE IN MILES AND DIRECTION FROM NEAREST TOWN OR POST OFFICE* 25 Miles East of Navajo Dam.		10. FIELD AND POOL, OR WILDCAT Basin Dakota
15. DISTANCE FROM PROPOSED* LOCATION TO NEAREST PROPERTY OR LEASE LINE, FT. (Also to nearest drilg. unit line, if any) 810'		11. SEC., T., R., M., OR BLK. AND SURVEY OR AREA Sec 9 T30N R5W
16. NO. OF ACRES IN LEASE N/A 2500		12. COUNTY OR PARISH Rio Arriba
17. NO. OF ACRES ASSIGNED TO THIS WELL 320		13. STATE New Mexico
18. DISTANCE FROM PROPOSED LOCATION* TO NEAREST WELL, DRILLING, COMPLETED, OR APPLIED FOR, ON THIS LEASE, FT.		20. ROTARY OR CABLE TOOLS Rotary
21. ELEVATIONS (Show whether DF, RT, GR, etc.) 6318' GR		22. APPROX. DATE WORK WILL START* Sept 1980

23. PROPOSED CASING AND CEMENTING PROGRAM

SIZE OF HOLE	SIZE OF CASING	WEIGHT PER FOOT	SETTING DEPTH	QUANTITY OF CEMENT
12-1/4"	9-5/8"	36#	350'	185 sks
8-3/4"	7"	20#	3500'	150 sks
6-1/4"	4-1/2"	10.5# & 11.6#	7800'	250 sks

RECEIVED

JUN 3 1980

U. S. GEOLOGICAL SURVEY
WASHINGTON, D. C.

Selectively perforate and stimulate the Dakota Formation.
Completion plans will be determined at Total Depth.

A BOP will be installed after the surface casing is set and cemented. All subsequent work will be conducted through the BOP's.

The South half of Section 9 is dedicated to this well.

Gas is dedicated.

IN ABOVE SPACE DESCRIBE PROPOSED PROGRAM: If proposal is to deepen or plug back, give data on present productive zone and proposed new productive zone. If proposal is to drill or deepen directionally, give pertinent data on subsurface locations and measured and true vertical depths. Give blowout preventer program, if any.

24. SIGNED Paul C. Thompson TITLE Drilling Engineer DATE June 2, 1980
Paul C. Thompson
(This space for Federal or State office use)

PERMIT NO. _____ APPROVAL DATE _____

APPROVED BY _____ TITLE _____ DATE _____
CONDITIONS OF APPROVAL, IF ANY:DRILLING AND CEMENTING ARE
SUBJECT TO THE FOLLOWING CONDITIONS:
*See Instructions On Reverse Side

MMOCC

OIL CONSERVATION DIVISION

P. O. BOX 2088

SANTA FE, NEW MEXICO 87501

STATE OF NEW MEXICO
ENERGY AND MINERALS DEPARTMENTForm C-107
Revised 10-1-78NWP
WELL FILE

All distances must be from the outer boundaries of the Section.

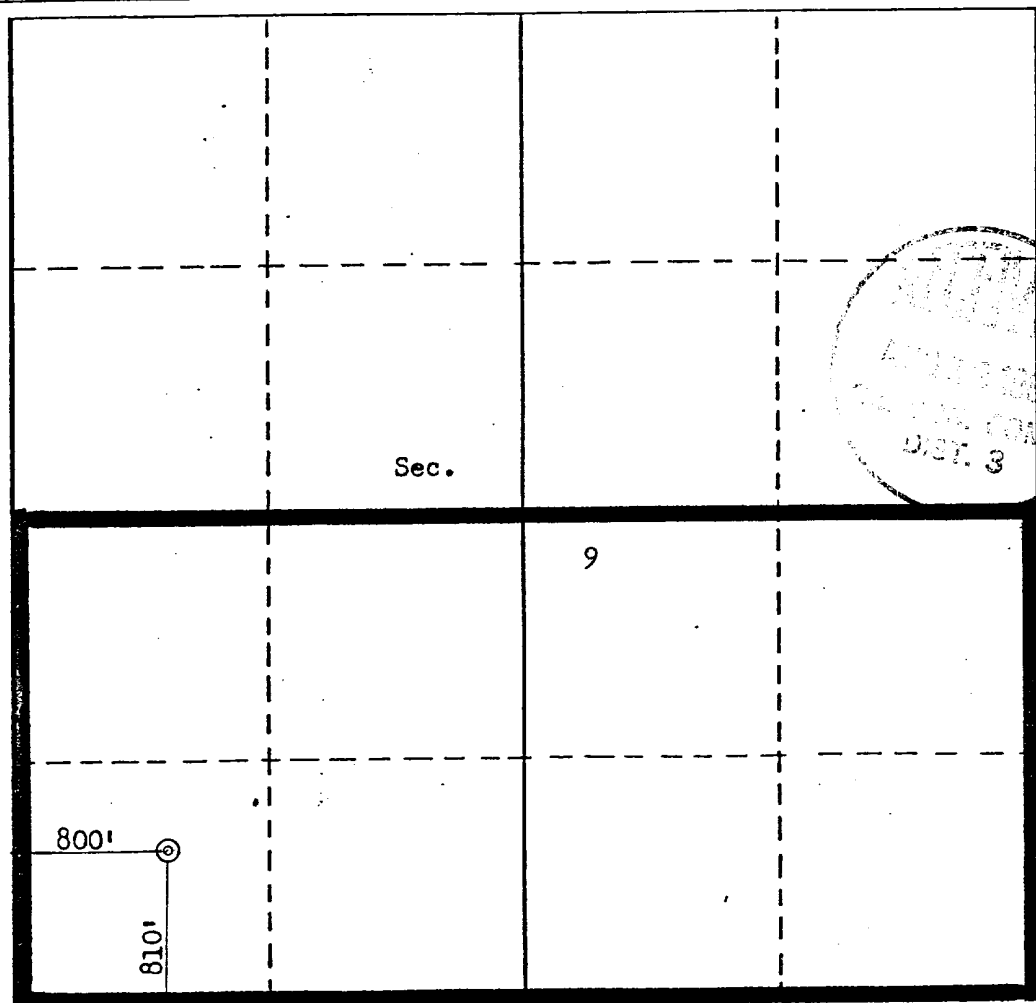
Operator NORTHWEST PIPELINE CORPORATION			Lease SAN JUAN 30-5 UNIT		Well No. 49
Unit Letter M	Section 9	Township 30N	Range 5W	County Rio Arriba	
Actual Footage Location of Well: 810 feet from the South line and 800 feet from the West line					
Ground Level Elev. 6312	Producing Formation Dakota		Pool Basin Dakota		Dedicated Acreage: 320 Acres

1. Outline the acreage dedicated to the subject well by colored pencil or hatchure marks on the plat below.
2. If more than one lease is dedicated to the well, outline each and identify the ownership thereof (both as to working interest and royalty).
3. If more than one lease of different ownership is dedicated to the well, have the interests of all owners been consolidated by communitization, unitization, force-pooling, etc?

☒ Yes ☐ No If answer is "yes," type of consolidation Unitization

If answer is "no," list the owners and tract descriptions which have actually been consolidated. (Use reverse side of this form if necessary.)

No allowable will be assigned to the well until all interests have been consolidated (by communitization, unitization, forced-pooling, or otherwise) or until a non-standard unit, eliminating such interests, has been approved by the Commission.



CERTIFICATION

I hereby certify that the information contained herein is true and complete to the best of my knowledge and belief.

Paul C. Thompson
Name

Paul C. Thompson
Position

Drilling Engineer

Company
Northwest Pipeline Corp.

Date
August 7, 1980

I hereby certify that the well location shown on this plat was plotted from field notes of actual surveys made by me or under my supervision, and that the same is true and correct to the best of my knowledge and belief.

Date Surveyed

August 5, 1980

Registered Professional Engineer
and/or Land Surveyor

Fred B. Kerr Jr.
Fred B. Kerr Jr.

Certificate No.

3950

UNITED STATES
DEPARTMENT OF THE INTERIOR
GEOLOGICAL SURVEY

SUNDRY NOTICES AND REPORTS ON WELLS

(Do not use this form for proposals to drill or to deepen or plug back to a different reservoir. Use Form 9-331-C for such proposals.)

1. oil well ☐ gas well ☒ other ☐
2. NAME OF OPERATOR
Northwest Pipeline Corporation
3. ADDRESS OF OPERATOR
P.O. Box 90, Farmington, N.M. 87401
4. LOCATION OF WELL (REPORT LOCATION CLEARLY. See space 17 below.)
AT SURFACE: 810' FSL & 800' FWL
AT TOP PROD. INTERVAL:
AT TOTAL DEPTH:

16. CHECK APPROPRIATE BOX TO INDICATE NATURE OF NOTICE, REPORT, OR OTHER DATA

REQUEST FOR APPROVAL TO: SUBSEQUENT REPORT OF:
TEST WATER SHUT-OFF ☐ ☐
FRACTURE TREAT ☐ ☐
SHOOT OR ACIDIZE ☐ ☐
REPAIR WELL ☐ ☐
PULL OR ALTER CASING ☐ ☐
MULTIPLE COMPLETE ☐ ☐
CHANGE ZONES ☐ ☐
ABANDON* ☐ ☐
(other) Change Locations

17. DESCRIBE PROPOSED OR COMPLETED OPERATIONS (Clearly state all pertinent details, and give pertinent dates, including estimated date of starting any proposed work. If well is directionally drilled, give subsurface locations and measured and true vertical depths for all markers and zones pertinent to this work.)*

This well location has been changed because of pipeline under location.

Old Location: 810' FSL & 975' FWL

New Location: 810' FSL & 800' FWL

5. LEASE
SF 078997
6. IF INDIAN, ALLOTTEE OR TRIBE NAME
7. UNIT AGREEMENT NAME
San Juan 30-5 Unit
8. FARM OR LEASE NAME
San Juan 30-5 Unit
9. WELL NO.
#49
10. FIELD OR WILDCAT NAME
Basin Dakota
11. SEC., T., R., M., OR BLK. AND SURVEY OR AREA
Sec 9 T30N R5W
12. COUNTY OR PARISH
Rio Arriba
13. STATE
New Mexico
14. API NO.
15. ELEVATIONS (SHOW DF, KDB, AND WD)
6318' GR

(NOTE: Report results of multiple completion or zone change on Form 9-330.)

Subsurface Safety Valve: Manu. and Type _____

Set @ _____ Ft.

18. I hereby certify that the foregoing is true and correct

SIGNED Donna Grace TITLE Production Clerk DATE August 7, 1980

AS AMENDED

(This space for Federal or State office use)

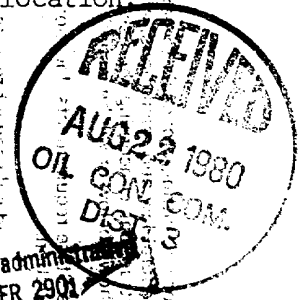
APPROVED BY: James F. Sims
CONDITIONS OF APPROVAL, IF ANY:

TITLE _____ DATE _____

DISTRICT ENGINEER

*See Instructions on Reverse Side

NMOCC



This action is subject to administrative review pursuant to 30 CFR 290.1

OIL CONSERVATION DIVISION

STATE OF NEW MEXICO
ENERGY AND MINERALS DEPARTMENTP. O. BOX 2088
SANTA FE, NEW MEXICO 87501Form C-107
Revised 10-1-78

All distances must be from the outer boundaries of the Section.

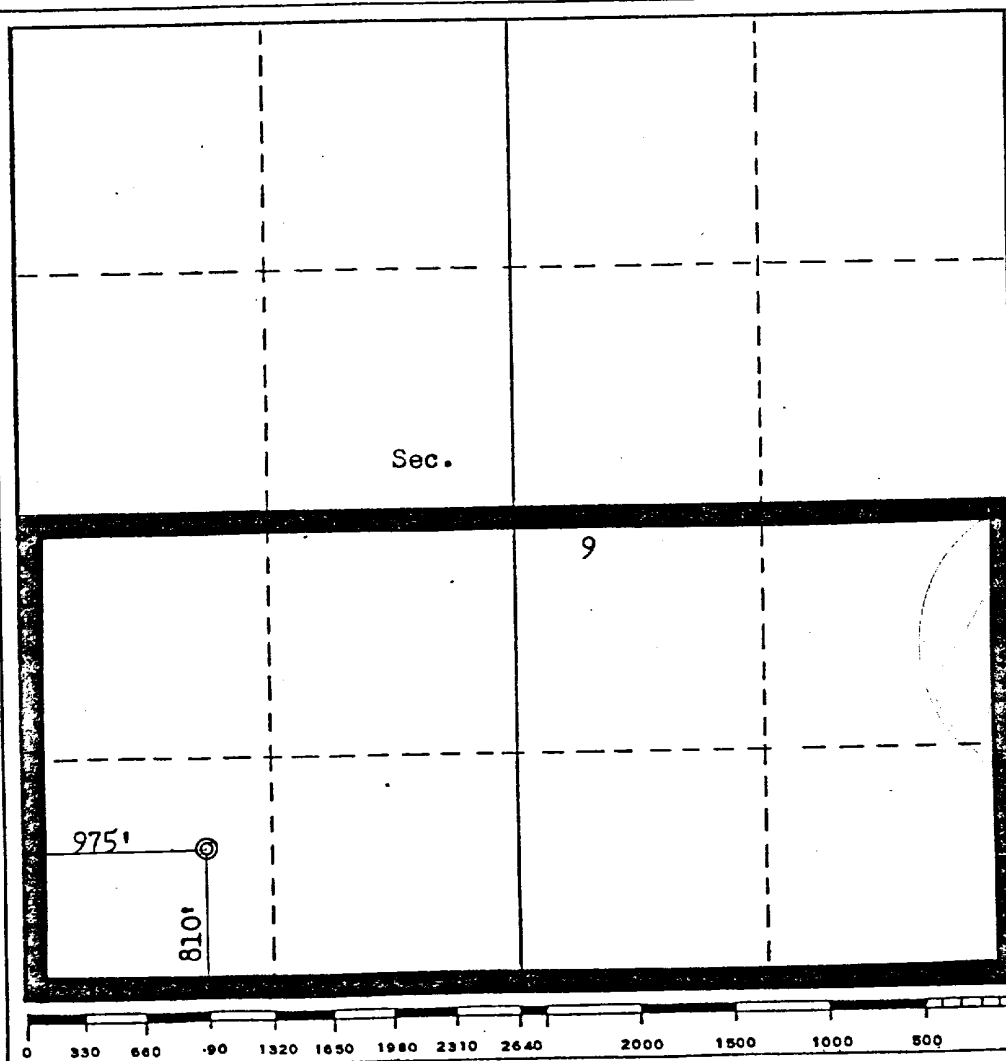
Operator NORTHWEST PIPELINE CORPORATION			Lease SAN JUAN 30-5 UNIT		Well No. 49
Unit Letter M	Section 9	Township 30N	Range 5W	County Rio Arriba	
Actual Footage Location of Well: 810 feet from the South line and 975 feet from the West line					
Ground Level Elev. 6318	Producing Formation Dakota		Pool Basin Dakota		Dedicated Acreage: 320 Acres

1. Outline the acreage dedicated to the subject well by colored pencil or hachure marks on the plat below.

2. If more than one lease is dedicated to the well, outline each and identify the ownership thereof (both as to working interest and royalty).
NORTHWEST PIPELINE CORPORATION3. If more than one lease of different ownership is dedicated to the well, have the interests of all owners been consolidated by communitization, unitization, force-pooling, etc?
APR 25 1980☒ Yes ☐ No If answer is "yes," type of consolidation Unitization**PRODUCTION AND DRILLING**

If answer is "no," list the owners and tract descriptions which have actually been consolidated. (Use reverse side of this form if necessary.)

No allowable will be assigned to the well until all interests have been consolidated (by communitization, unitization, forced-pooling, or otherwise) or until a non-standard unit, eliminating such interests, has been approved by the Commission.



CERTIFICATION

I hereby certify that the information contained herein is true and complete to the best of my knowledge and belief.

Paul C. Thompson

Name

Paul C. Thompson

Position

Drilling Engineer

Company

Northwest Pipeline Corp.

Date

April 29, 1980

I hereby certify that the well location shown on this plat was plotted from field notes of actual surveys made by me or under my supervision, and that the same is true and correct to the best of my knowledge and belief.

Date Surveyed

April 23, 1980

Registered Professional Engineer
and Land Surveyor*Kerr B. Kerr Jr.*

Certificate No.

3950 B. KERR, JR.

DRILLING PROGNOSIS

San Juan 30-5 Unit #49

Date: May 23, 1980

I. Location: 975' FWL & 810' FSL
Sec. 9, T30N, R5W
Rio Arriba County, NM

Surface: BLM
Minerals: Fed-SF-078997

Field: Basin Dakota

Elevation: 6318' GR.

II. Geology: Surface: San Jose

A.	<u>Formation</u>	<u>Depth</u>	<u>Formation</u>	<u>Depth</u>
	Ojo Alamo:	2521'	Point Lookout:	5503'
	Kirtland:	2609'	Mancos:	5788'
	Fruitland:	2919'	Gallup:	6613'
	Pictured Cliffs:	3079'	Greenhorn:	7503'
	Lewis:	3288'	Graneros:	7553'
	Cliff House:	5308'	Dakota:	7683'
			Total Depth:	7780'

B. Logging Program: Gamma Ray-Induction & Density at Total Depth.

C. Coring Program: None

D. Natural Gauges: Gauge @ 5503', 6613', 7553', and @ total depth.
Record all gauges on daily drilling report and morning report. Gauge all noticeable increases in gas while drilling and report.

III. Drilling:

A. Contractor:

B. Mud Program: Mud, water & gas will be furnished by Northwest Pipeline Corporation from surface to total depth.

a) Spud Mud: Water, Gel & Lime

b) Surface Casing to Intermediate Casing depth: Water, Gel, Lime & Barite

c) From Intermediate casing depth to T.D. will be drilled with gas.

C. While drill pipe is in use, pipe rams shall be actuated to test proper functioning not less than once each day.

Once each trip, the blind rams shall be actuated to test proper functioning.

Record all tests on Northwest Pipeline tour report, with time each test was conducted.

IV. Materials:

A. Casing Program:

Hole Size	Depth	Casing Size	Wt. & Grade	Depth Set
12-1/4"	350'	9-5/8"	36# K-55	350'
8-3/4"	3488'	7"	20# K-55	3488'
6-1/4"	7780'	4-1/2"	10.5# K-55	0' - 6800'
		4-1/2"	11.6# K-55	6800' - T.D.

B. Float Equipment:

Surface Casing: 9-5/8" - Larkin Guide Shoe and Self-fill insert float valve.

Intermediate Casing: 7" Dowell Guide Shoe.
Dowell Self-fill insert float valve.
Dowell Centralizers (5).

Production Casing: 4-1/2" Larkin Geyser Shoe.
Larkin Flapper type float collar.

C. Tubing: 7730' of 2-3/8", 4.7#, J-55. 8 RD EUE tubing with common seating nipple above bottom joint.

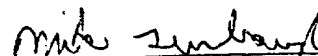
D. Well Head Equipment: Gray Tool Company drawing No. E-5533, or equivalent. Well head representative to set slips on intermediate and production strings.

V. Cementing:

A. Surface Casing: 9-5/8" - Use 185 sks of Class "B" cmt with 1/4# gel flake per sk and 3% Calcium Chloride, (100% excess to circulate 9-5/8" casing). WOC 12 hrs. Test to 600 PSI for 30 min.

B. Intermediate Casing: 7" - Use 100 sks of 65/35 Class "B" poz with 12% gel and 15.52 gal of water per sk (Y=2.72). Tail in with 50 sks of Class "B" with 2% Calcium Chloride (Y=1.18) (250 cu.ft. of slurry, 60% excess to cover Ojo Alamo). Use top rubber plug only. Run temperature survey after 8 hrs. WOC 12 hrs. Test casing to 1200 PSI for 30 min.

C. Production Casing: 4-1/2" - Precede cmt with 40 barrels of water mixed with 4 sks gel. Cmt with 250 sks of Class "B" cmt with 8% gel, 12-1/2# fine gilsonite per sk and 0.4% HR-4 (Y=2.17). Tail in with 100 sks of Class "B" cmt with 1/4# fine tuf-plug per sk & 0.4% HR-4 per sk (Y=1.18) (600 cu.ft. of slurry) (50% excess to fill to intermediate casing). Run temperature survey after 8 hrs. Perforate after 8 hrs.


Mike J. Turnbaugh

Associate Drilling Engineer

1. Existing Roads: See attached topographic map. All existing roads used, shall be maintained in a serviceable condition at all times during the drilling operation.
2. Planned Access Roads: See attached topographic map. Maximum grade is approximately 1%. The road surface will not exceed twenty feet in width. Upon completion of drilling operations the access road will be adequately drained to control runoff and soil erosion. Drainage facilities may include ditches, water bars, culverts or any other measure deemed necessary. All activities will be confined to the access road and drill pad.
3. Location of Existing Wells: See attached topographic map.
4. Location of Tank Batteries; Production Facilities; and Production, Gathering and Service Lines: See attached topographic map for locations of existing and proposed gas gathering lines.
5. Location and Type of Water Supply: Water needed for the drilling operation will be hauled from the NW Rosa Road Waterhole
6. Source of Construction Materials: No additional materials will be needed.
7. Methods for Handling Waste Disposal: All garbage, debris, and trash will be buried at least three feet deep. A portable toilet will be supplied for human waste. After drilling operations have been completed the reserve pit will be fenced and the liquid portion will be allowed to evaporate before the location is cleaned up and leveled. The earthen pits will not be located on natural drainages and will be constructed in such a manner so that they will not leak. Any evaporator pit containing toxic liquids will be fenced.
8. Ancillary Facilities: There will be no camps or airstrips associated with the drilling of this well.
9. Well Site Layout: See attached location layout sheet. There will be a drainage ditch above the cut slope. *Blank*
10. Plans for Restoration of the Surface: Upon completion of drilling, the location will be cleaned, and leveled so that no cut or fill banks will be steeper than 3:1.

All of the area disturbed in connection with the drill site will be seeded as close as possible for any above ground equipment while still allowing for access to the equipment. Seeding will be done within one year after drilling is completed and during the period from July 1 through September 15. Seeding will be done with seed Mixture #1.

All equipment above ground will be painted a non-glare, non-reflective, non-chalking color that simulates the natural color of the site. For this well code number 595-34127, green.
11. Other Information: If, during operations, any historic or prehistoric ruin, monument or site, or any object of antiquity is discovered, then work will be suspended and the discovery will be reported to the District Manager of the BLM.

All liquids from the line will be contained at the site unless otherwise specified by the surface agency's representative.

When drilling with gas, the line used to discharge and burn off the gas will be located so as not to damage vegetation in the area, and if necessary an earthen screen will be constructed to protect the vegetation. All liquids from the line will be contained at the site unless otherwise specified by the surface agency's representative.

The area covered by the location and proposed access road is gently sloped with scattered brush and some grasses.

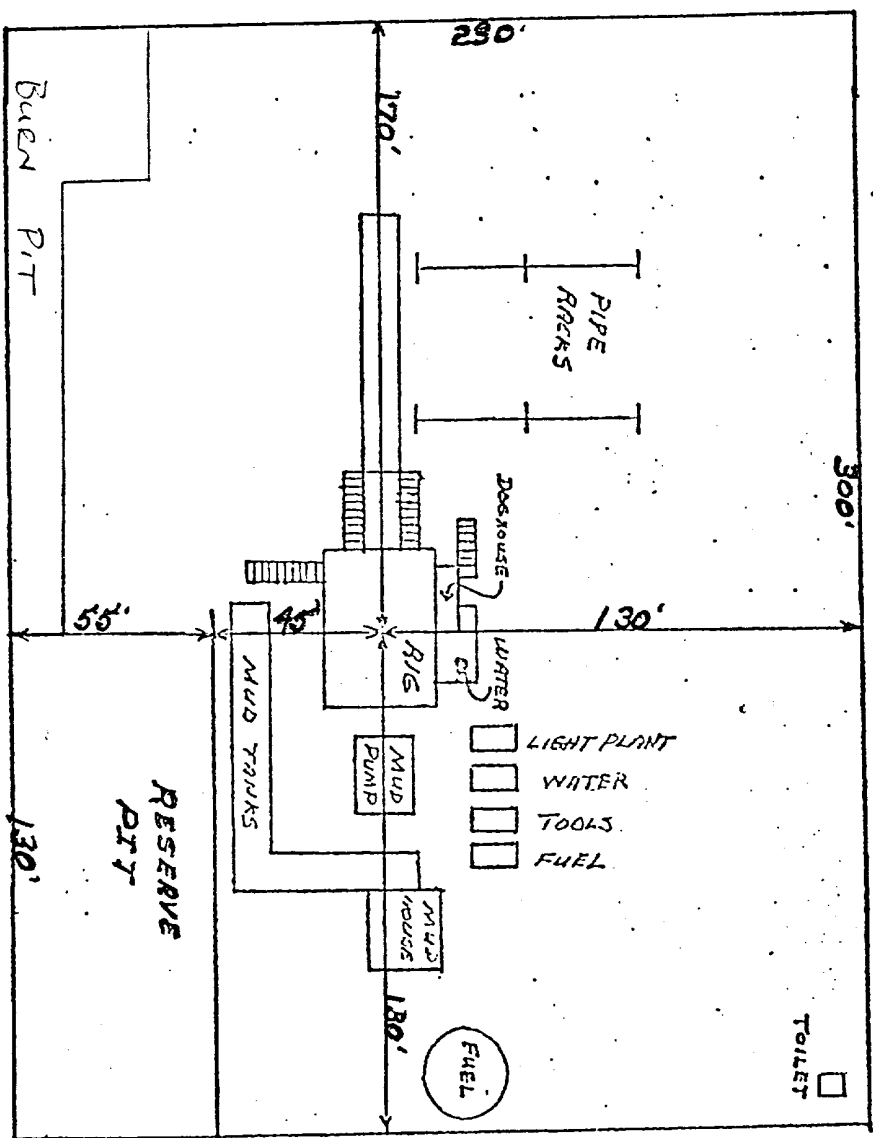
12. Operator's Representative: Paul Thompson - P.O. Box 90 - Farmington, New Mexico 87401. Phone: 327-5351 Extension # 115
13. Certification:

I hereby certify that I have inspected the proposed drillsite and access route; that I am familiar with the conditions which presently exist; that the statements made in this plan are, to the best of my knowledge true and correct; and, that the work associated with the operations proposed herein will be performed by Northwest Pipeline Corporation and its contractors and subcontractors in conformity with this plan and the terms and conditions under which it is approved.

Paul C. Thompson
Paul Thompson
Drilling Engineer

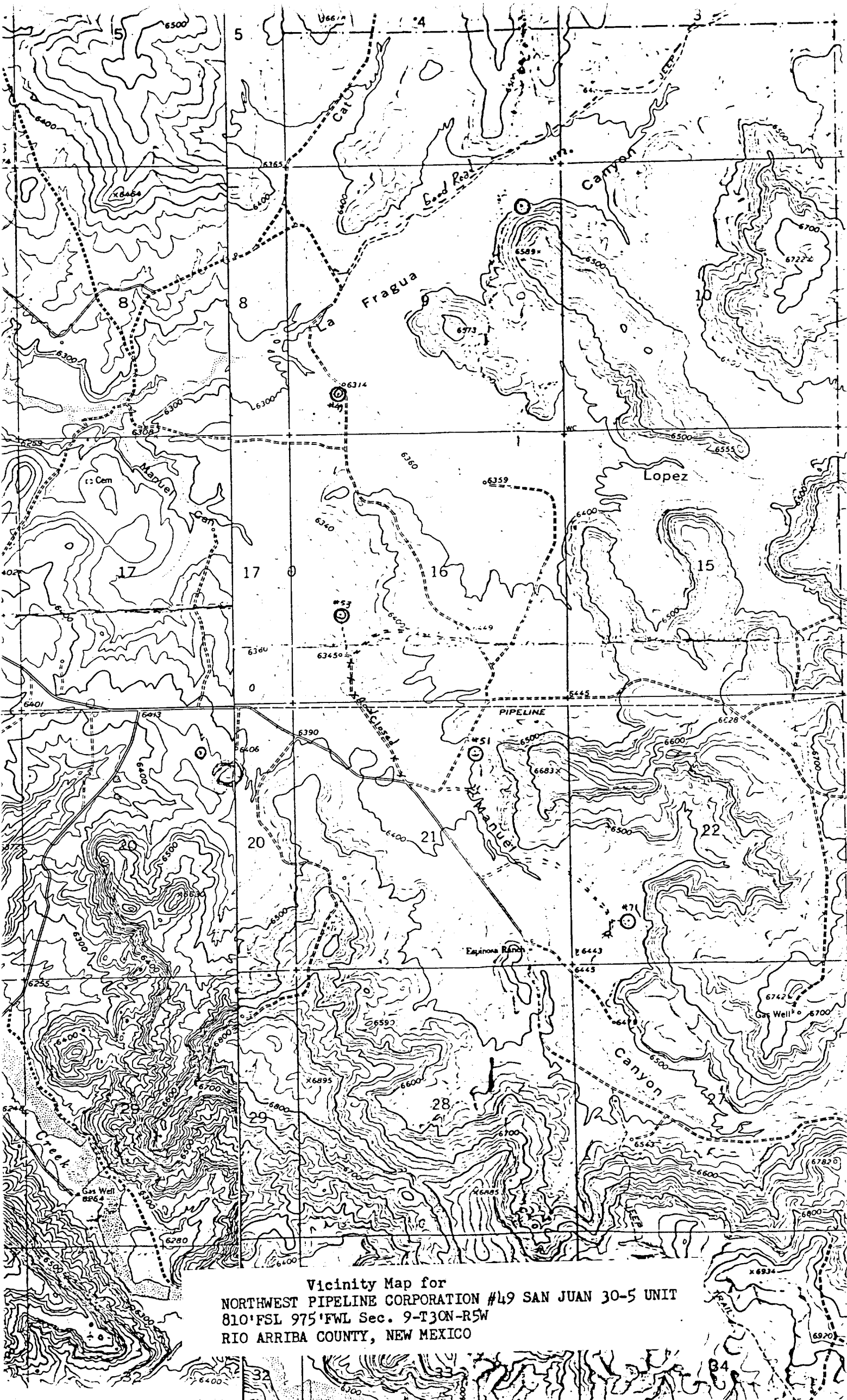
NORTHWEST PIPELINE CORPORATION

LOCATION LAYOUT SAN JUAN 30-5 UNIT #49



DATE:

SCALE: 1 CM = 20'



Vicinity Map for
NORTHWEST PIPELINE CORPORATION #49 SAN JUAN 30-5 UNIT
810'FSL 975'FWL Sec. 9-T30N-R5W
RIO ARriba COUNTY, NEW MEXICO

RECEIVED

PLAN VIEW - CHOKE MANIFOLD

Flanged cross with pressure gauge in outside opening. Screw connections are permissible but discouraged.

Drilling Nipple

Flow Line

Fill-up line

long positive choke

Flanged steel plug valve

Flanged steel plug valve

3" steel plug valves

Flange "A"

PIPE RAMS

BLANK RAMS

Cameron SS, 2 Q.R.C. or

Shaffer Hydraulic Double Gate.

And in special instances a double Shaffer hand operated B.O.P.

"Emergency flow line

Flange "A"

See plan view

4" valves

2" or 3" valves with latter preferred.

Kill Line - 2" valves

Conductor pipe

- NOTES -

1. BOP hand controls to be extended clear of substructure & ramps.
2. All valves to be same test pressure capacity as BOP's.
3. Compare minimum ID of BOP equipment with OD of casing hangers to be passed thru.
4. Everything flanged where shown.
5. Cameron Double-O Rubber Ring Guard gaskets are to be used in flanges indicated by * on sketch.
6. New metal rings are to be used each time a flange is assembled.
7. BOP's to be well braced at all times.

If possible install head so kill line valves will be under BOP's for protection. These valves to be kept closed after BOP's tested & kill line removed (by use of quick union) to fill-up line. When used this way kill line must be high pressure.

SINGLE PIPE RAM BLOWOUT PREVENTOR HOOKUP