

UNITED STATES
DEPARTMENT OF THE INTERIOR
GEOLOGICAL SURVEY

APPLICATION FOR PERMIT TO DRILL, DEEPEN, OR PLUG BACK

1a. TYPE OF WORK DRILL <input checked="" type="checkbox"/> DEEPEN <input type="checkbox"/> PLUG BACK <input type="checkbox"/>		5. LEASE DESIGNATION AND SERIAL NO. NM 012573	
b. TYPE OF WELL OIL WELL <input type="checkbox"/> GAS WELL <input checked="" type="checkbox"/> OTHER <input type="checkbox"/>		6. IF INDIAN, ALLOTTEE OR TRIBE NAME	
2. NAME OF OPERATOR El Paso Natural Gas Company		7. UNIT AGREEMENT NAME San Juan 30-6 Unit	
3. ADDRESS OF OPERATOR PO Box 990, Farmington, NM 87401		8. FARM OR LEASE NAME San Juan 30-6 Unit	
4. LOCATION OF WELL (Report location clearly and in accordance with any State requirements.)* At surface 1100'N, 1580'W At proposed prod. zone same		9. WELL NO. 65A	
14. DISTANCE IN MILES AND DIRECTION FROM NEAREST TOWN OR POST OFFICE* 24 miles East of Blanco, NM		10. FIELD AND POOL, OR WILDCAT Blanco Mesa Verde	
15. DISTANCE FROM PROPOSED* LOCATION TO NEAREST PROPERTY OR LEASE LINE, FT. (Also to nearest drlg. unit line, if any) 1100'		11. SEC., T., R., M., OR BLK. AND SURVEY OR AREA Sec. 13, T-30-N, R-7-W NMPM	
16. NO. OF ACRES IN LEASE Unit		12. COUNTY OR PARISH Rio Arriba	
17. NO. OF ACRES ASSIGNED TO THIS WELL w/ 320.00		13. STATE NM	
18. DISTANCE FROM PROPOSED LOCATION* TO NEAREST WELL, DRILLING, COMPLETED, OR APPLIED FOR, ON THIS LEASE, FT. 2900'		20. ROTARY OR CABLE TOOLS Rotary	
21. ELEVATIONS (Show whether DF, RT, GR, etc.) 6411'GL		22. APPROX. DATE WORK WILL START*	

23.

PROPOSED CASING AND CEMENTING PROGRAM

SIZE OF HOLE	SIZE OF CASING	WEIGHT PER FOOT	SETTING DEPTH	QUANTITY OF CEMENT
13 3/4"	9 5/8"	32.3#	200'	224 cu.ft. to circulate
8 3/4"	7"	20.0#	3655'	296 cu.ft. to cover Ojo Alar
6 1/4"	4 1/2" liner	10.5#	3505-6000'	438 cu.ft. to fill to 3505'

Selectively perforate and sandwater fracture the Mesa Verde formation.

A 3000 psi WP and 6000 psi test double gate preventer equipped with blind and pipe rams will be used for blow out prevention on this well.

This gas is dedicated.

The W/2 of Section 13 is dedicated to this well.

IN ABOVE SPACE DESCRIBE PROPOSED PROGRAM: If proposal is to deepen or plug back, give data on present productive zone and proposed new productive zone. If proposal is to drill or deepen directionally, give pertinent data on subsurface locations and measured and true vertical depths. Give blowout preventer program, if any.

24. SIGNED W. J. Briscoe TITLE Drilling Clerk DATE 9-14-78

(This space for Federal or State office use)

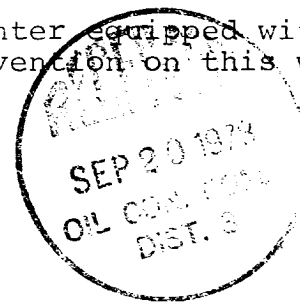
PERMIT NO. _____ APPROVAL DATE _____

APPROVED BY _____ TITLE _____ DATE _____

CONDITIONS OF APPROVAL, IF ANY:

ok Frank

*See Instructions On Reverse Side

U. S. GEOLOGICAL SURVEY
DURANGO, COLO.RECEIVED
SEP 18 1978

NEW MEXICO OIL CONSERVATION COMMISSION
WELL LOCATION AND ACREAGE DEDICATION PLAT

Form C-102
Supersedes C-1
Effective 1-1-66

All distances must be from the outer boundaries of the Section.

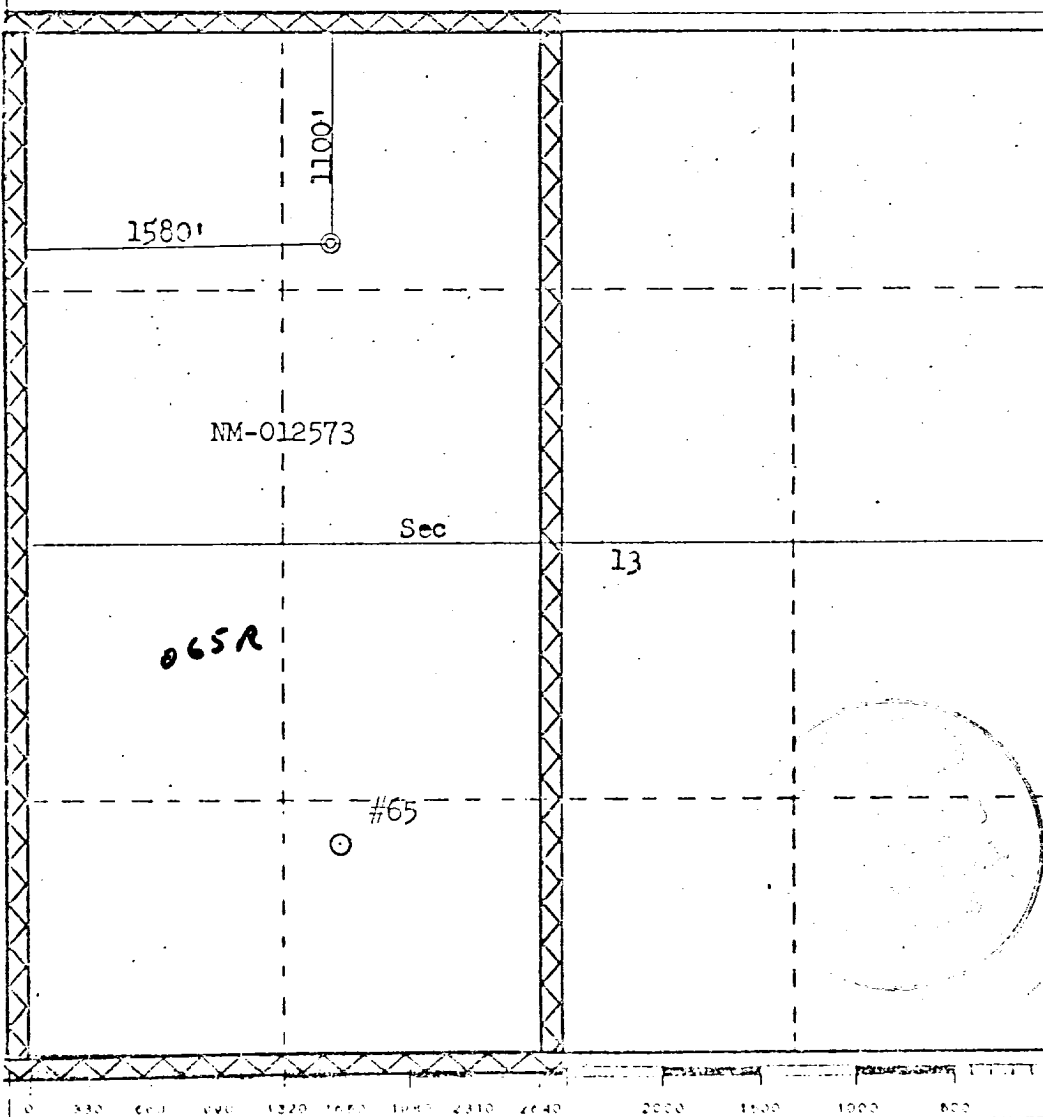
Operator EL PASO NATURAL GAS COMPANY			Lease SAN JUAN 30-6 UNIT (NM-012573)		Well No. 65A ✓
Unit Letter C	Section 13	Township 30N	Range 7W	County RIO ARriba ✓	
Actual Footage Location of Well: 1100 feet from the North line and 1580 feet from the West line.					
Ground Level Elev. 6411	Producing Formation Mesa Verde		Pool Blanco Mesa Verde ✓	Dedication Acres per Acre 320.00 ✓	

1. Outline the acreage dedicated to the subject well by colored pencil or hachure marks on the plat below.
2. If more than one lease is dedicated to the well, outline each and identify the ownership thereof (both as to working interest and royalty).
3. If more than one lease of different ownership is dedicated to the well, have the interests of all owners been consolidated by communitization, unitization, force-pooling, etc?

☒ Yes ☐ No If answer is "yes," type of consolidation Unitization

If answer is "no," list the owners and tract descriptions which have actually been consolidated. (Use reverse side of this form if necessary.) _____

No allowable will be assigned to the well until all interests have been consolidated (by communitization, unitization, forced-pooling, or otherwise) or until a non-standard unit, eliminating such interests, has been approved by the Commission.



CERTIFICATION

I hereby certify that the information contained herein is true and complete to the best of my knowledge and belief.

M. J. Bueco
 Name
Drilling Clerk
 Position
El Paso Natural Gas Co.
 Company
September 14, 1978
 Date


I hereby certify that the well location shown on this plat was plotted from field notes of actual surveys made by me or under my supervision, and that the same is true and correct to the best of my knowledge and belief.

Date Surveyed
August 13, 1978
 Registered Professional Engineer
Fred B. Kerr Jr.
Fred B. Kerr Jr.
 Certificate No. **3950**

Multi-Point Surface Use Plan
San Juan 30-6 Unit #65A

1. Existing Road - Please refer to Map No. 1 which shows the existing roads. New roads which will be required have been marked on this map. All existing and new roads will be properly maintained during the duration of this project.
2. Planned Access Roads - Please refer to Map No. 1. The grade of the access roads will be consistent with that of the local terrain. The road surface will not exceed twenty feet (20') in width. Upon completion of the project, the access road will be adequately drained to control soil erosion. Drainage facilities may include ditches, water bars, culverts or any other measure deemed necessary by trained Company personnel to insure proper drainage. Gates and/or cattleguards will be installed if necessary.
3. Location of Existing Wells - Please refer to Map No. 2.
4. Location of Tank Batteries, Production Facilities, and Production Gathering and Service Lines - Please refer to Maps No. 1 and No. 2. Map No. 2 shows the existing gas gathering lines. Map No. 1 shows the existing roads and new proposed access roads. All known production facilities are shown on these two maps.
5. Location and Type of Water Supply - Water for the proposed project will be obtained from San Juan 30-6 Water Well.
6. Source of Construction Materials - No additional materials will be required to build either the access road or the proposed location.
7. Methods of Handling Waste Materials - All garbage and trash materials will be put into a burn pit shown on the attached Location Plat No. 1. When clean-up operations are begun on the proposed project, the burn pit with its refuse will be buried to a depth of at least three feet (3'). A latrine, the location of which is also shown on Plat No. 1,

7. cont'd. will be provided for human waste. If large amounts of liquids are left in the reserve pit after completion of the project, the pit will be fenced until the liquids have had adequate time to dry. The location clean-up will not take place until such time as the reserve pit can be properly covered over to prevent run-off from carrying any of these materials into the watershed. No earthen pit will be located on natural drainages; all earthen pits will be so constructed as to prevent leakage from occurring.
8. Ancillary Facilities - No camps or airstrips will be associated with this project.
9. Wellsite Layout - Please refer to the attached Plat No. 1.
10. Plans for Restoration of the Surface - After completion of the proposed project, the location will be cleaned and leveled. The location will be left in such a condition that will enable reseeding operations to be carried out. Seed mixture as designated by the responsible government agency will be used. The reseeding operation will be performed during the time period set forth by the regulatory body. The location production equipment will be painted as designated by the responsible government agency.
11. Other Information - The terrain is sandstone ledges and high bluffs with pinon and cedar growing. Deer are occasionally seen on the proposed project site.
12. Operator's Representative - W.D. Dawson, PO Box 990, Farmington, NM
13. Certification - I hereby certify that I, or persons under my direct supervision, have inspected the proposed drillsite and access route; that I am familiar with the conditions which presently exist; that the statements made in this plan are, to the best of my knowledge, true and correct; and that the work associated with the operations proposed herein will be performed by El Paso Natural Gas Company and its contractors and sub-contractors in conformity with this plan and the terms and conditions under which it is approved.



D. C. Walker
Project Drilling Engineer

September 14, 197.

Operations Plan
San Juan 30-6 Unit #65A

I. Location: 1100'N, 1580'W, Section 13, T-30-N, R-7-W, Rio Arriba County, NM

Field: Blanco Mesa Verde

Elevation: 6411'GL

II. Geology:

A. Formation Tops:	Surface	San Jose	Lewis	3456'
	Ojo-Alamo	2371'	Mesa Verde	5186'
	Kirtland	2487'	Menefee	5259'
	Fruitland	3007'	Point Lookout	5551'
	Pic.Cliffs	3341'	Total Depth	6000'

B. Logging Program: GR-Ind. and GR-Density at Total Depth.

C. Coring Program: none

D. Natural Gauges: 5176', 5249', 5541' and at Total Depth.

Also gauge any noticeable increase in gas. Record all gauges in daily drilling report and on morning report.

III. Drilling:

A. Mud Program: mud from surface to 3655'. Gas from intermediate casing to Total Depth.

IV. Materials:

A. Casing Program:	Hole Size	Depth	Casing Size	Wt.&Grade
	13 3/4"	200'	9 5/8"	32.3# H-40
	8 3/4"	3655'	7"	20.0# K-55
	6 1/4"	3505-6000'	4 1/2"	10.5# K-55

B. Float Equipment: 9 5/8" surface casing - Pathfinder guide shoe (Part #2006-1-012).

7" intermediate casing - Pathfinder guide shoe (Part #1003-1-007) and Pathfinder self-fill insert float valve (Part #2010-6-007), 5 Pathfinder stabilizers (Part #107-10) every other joint above shoe. Run float two joints above shoe.

4 1/2" liner - 4 1/2" liner hanger with neoprene packoff. Pathfinder geyser shoe (Part #2017-1-050) and Larkin flapper type float collar (fig. 404 M&F).

C. Tubing: 6000' of 2 3/8", 4.7#, J-55 8rd EUE tubing with a common pump seating nipple one joint above bottom. Tubing will be open ended.

D. Wellhead Equipment: 10" 900 x 9 5/8" casing head. 10" 900 x 6" 900 xmas tree.

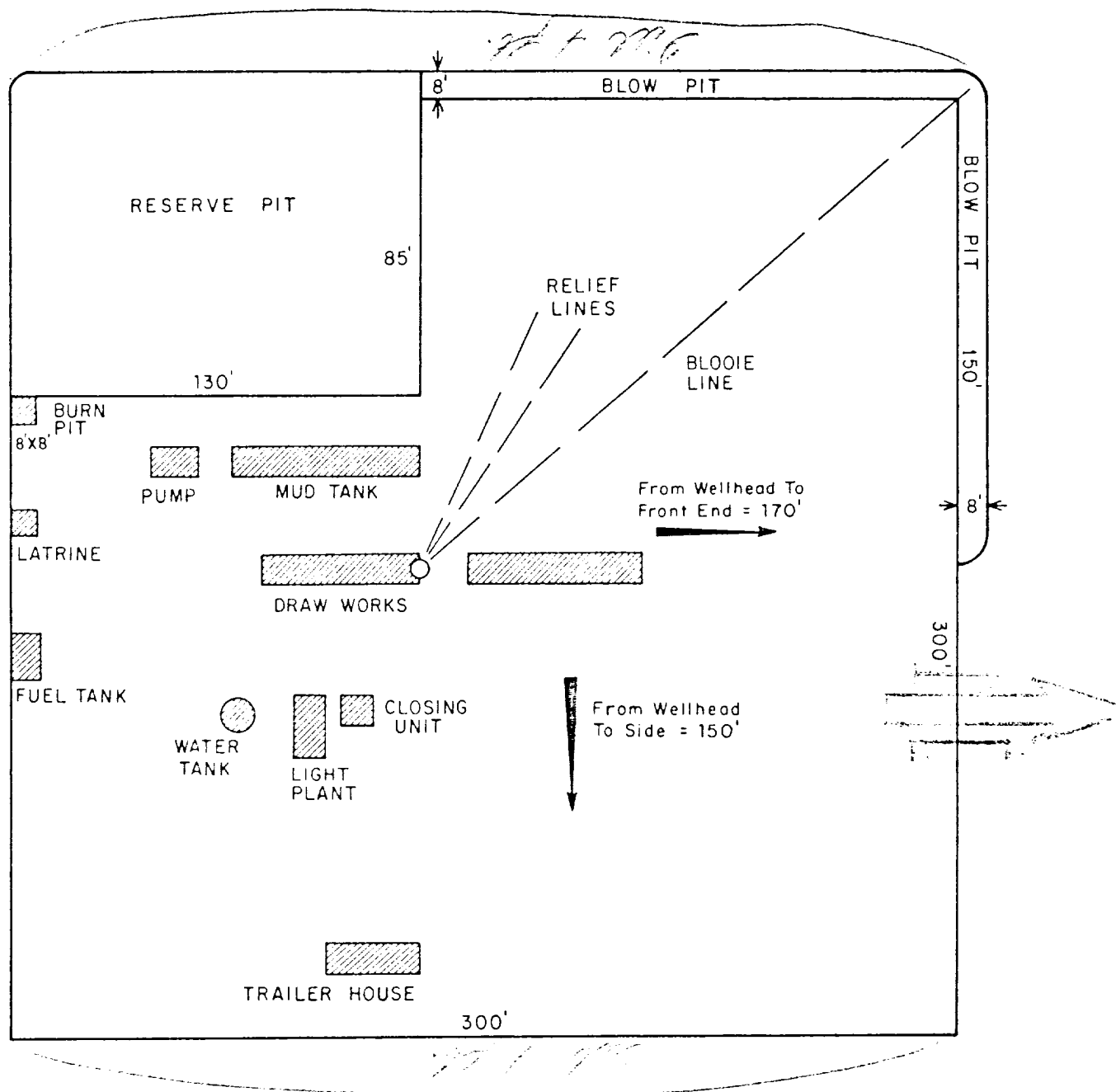
Operations Plan - San Juan 30-6 Unit #65A

V. Cementing:

9 5/8" surface casing - use 190 sks. of Class "B" cement with 1/4# gel-flake per sack and 3% calcium chloride (224 cu.ft. of slurry, 100% excess to circulate to surface). WOC 12 hours. Test casing to 600#/30 minutes.

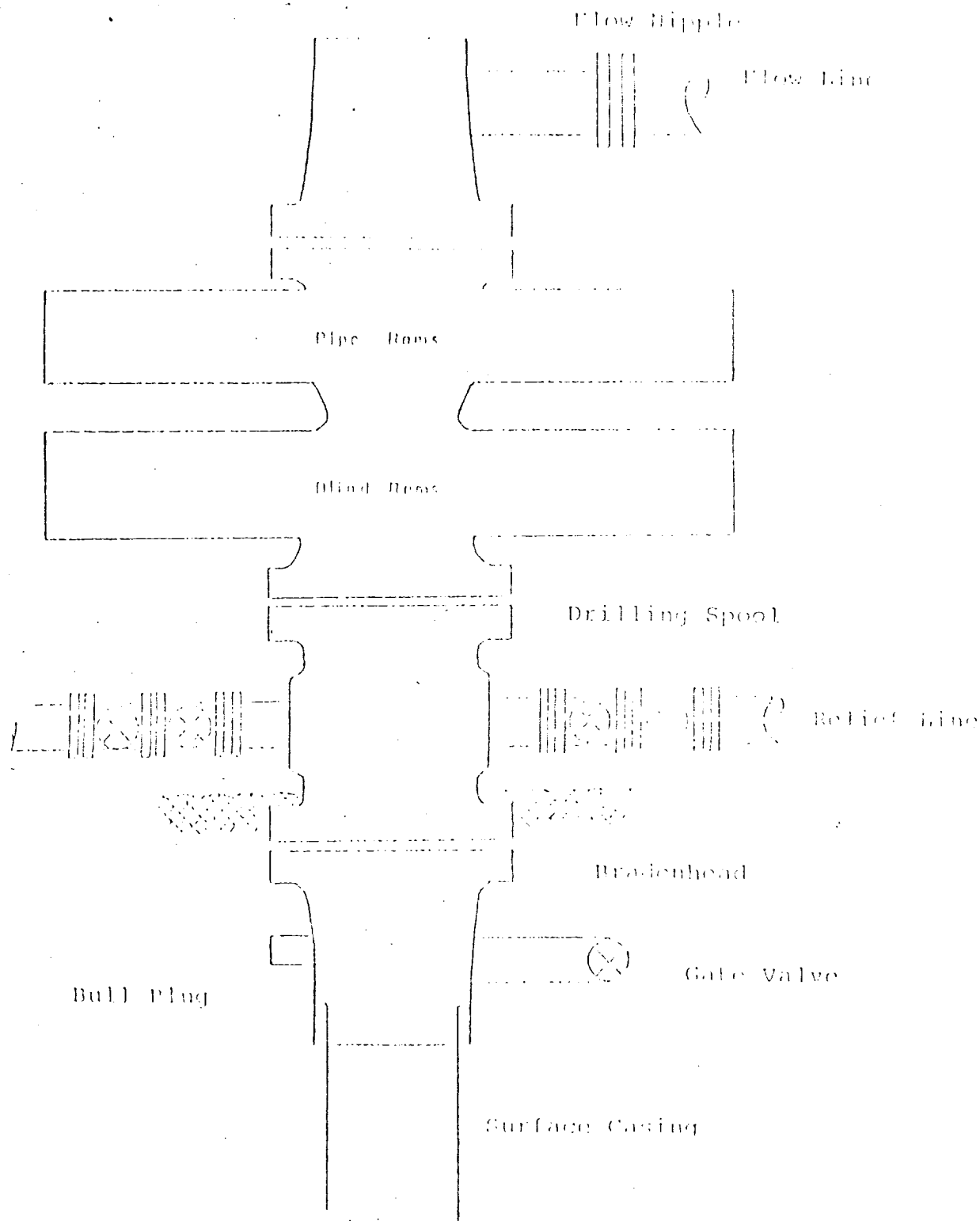
7" intermediate casing - use 110 sks. of 65/35 Class "B" Poz with 6% gel and 2% calcium chloride (8.3 gallons of water per sack) followed by 100 sks. of Class "B" with 2% calcium chloride (296 cu.ft. of slurry, 50% excess to cover Ojo Alamo). Run temperature survey at 8 hours. WOC 12 hours. Test casing to 1200#/30 minutes.

4 1/2" liner - precede cement with 20 barrels of gel water (2 sks. gel) Cement with 315 sks. of 50/50 Class "B" Poz with 2% gel, 0.6% Halad-9, 6.25# gilsonite plus 1/4# Flocele per sack (438 cu.ft. of slurry, 70% excess to circulate liner). WOC 18 hours.



				ENG. REC. DATE DRAWN J. L. H. 8-16-78 CHECKED CHECKED PROJ. APP. DESIGN		El Paso Natural Gas Company TYPICAL LOCATION PLAT FOR MESAVERDE OR DAKOTA DRILL SITE	
PRT.	SEP.	DATE	TO	W.O.	SCALE: 1" = 50'	DWG. NO.	REV.
PRINT RECORD							

Typical B.O.P. Installation for Mesa Verde Well

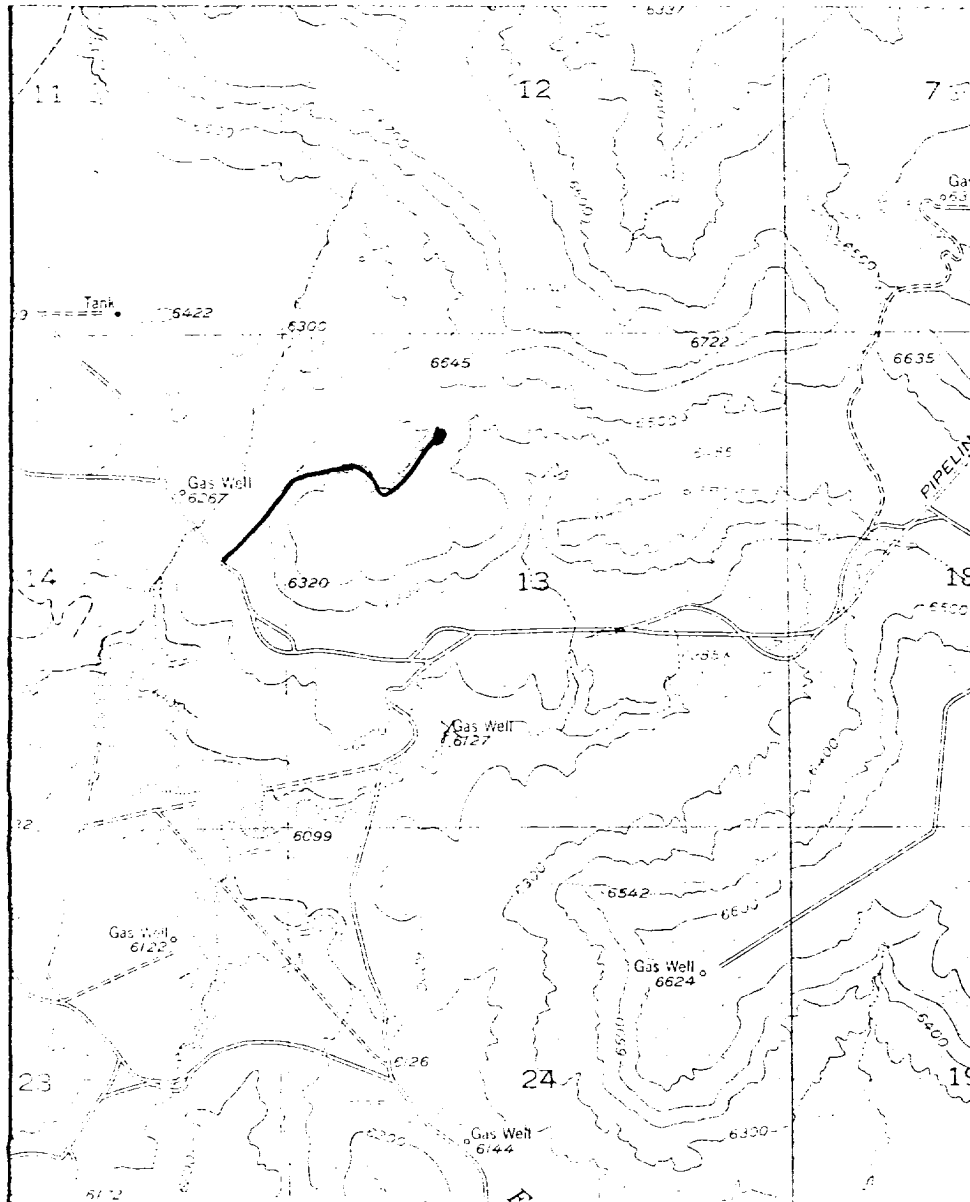


Series 900 Double Gate BOP, rated
at 3000 psi Working Pressure
When gas drilling operations begin a Shaffer type 50
or equivalent rotating head is installed on top of the
flow nipple and the flow line is converted into a blowie line

EL PASO NATURAL GAS COMPANY
 San Juan 30-6 #65 A
 NW 13-30-7

R-7-W

T
30
N



Map #1

LEGEND OF RIGHT-OF-WAYS

EXISTING ROADS	—
EXISTING PIPELINES	+++
EXISTING ROAD & PIPELINE	+++
PROPOSED ROADS	—
PROPOSED PIPELINES	+++
PROPOSED ROAD & PIPELINE	+++

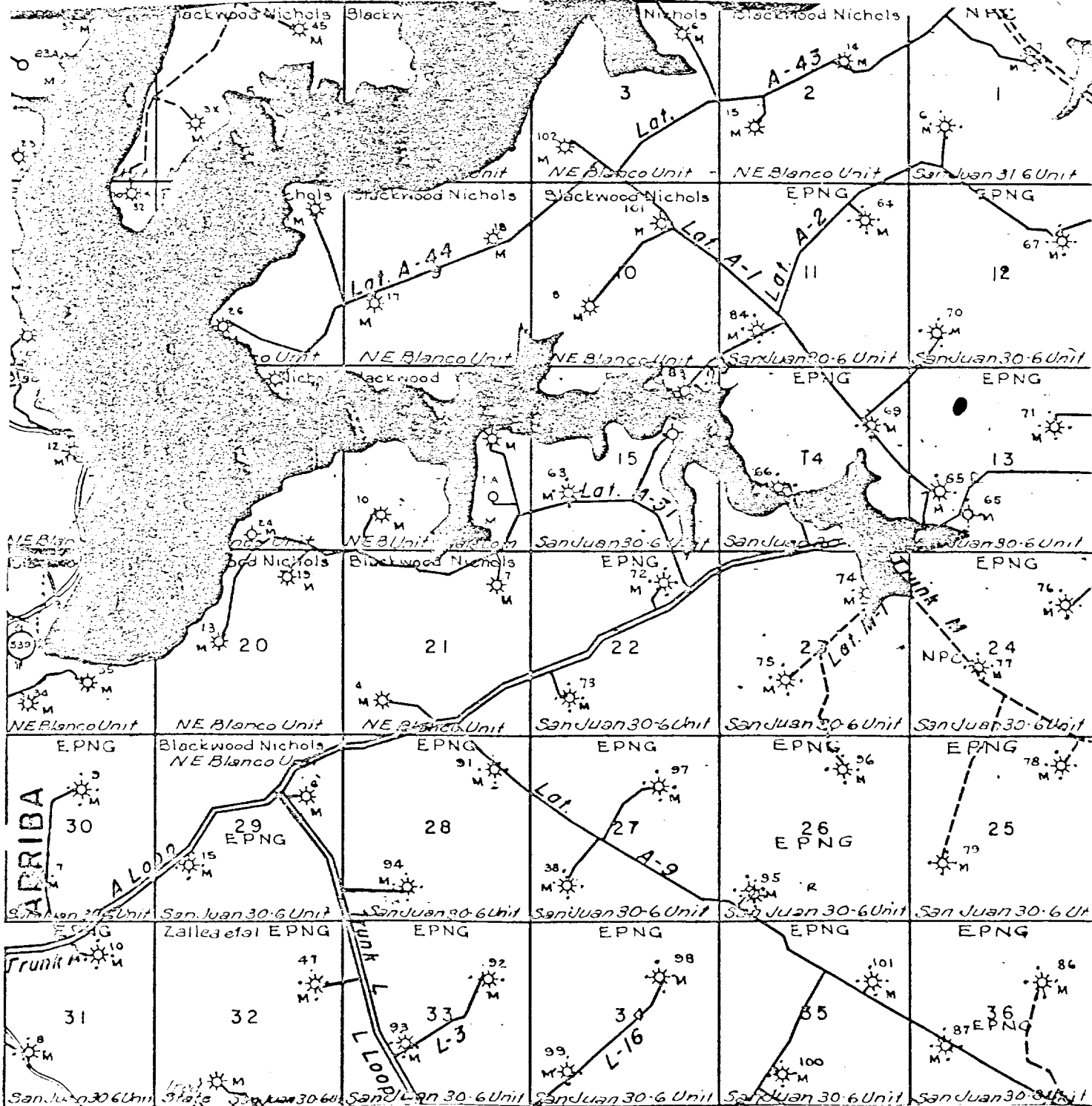
EL PASO NATURAL GAS COMPANY

San Juan 30-6 #65 A

NW 13-30-7

R-7-W

T
30
N



Map #2

Proposed Location