

UNITED STATES
DEPARTMENT OF THE INTERIOR
GEOLOGICAL SURVEY

APPLICATION FOR PERMIT TO DRILL, DEEPEN, OR PLUG BACK

1a. TYPE OF WORK

DRILL ☒DEEPEN ☐PLUG BACK ☐

b. TYPE OF WELL

OIL
WELL ☐GAS
WELL ☒

OTHER

SINGLE
ZONE ☒MULTIPLE
ZONE ☐

2. NAME OF OPERATOR

El Paso Natural Gas Company

3. ADDRESS OF OPERATOR

PO Box 239, Farmington, NM 87401

4. LOCATION OF WELL (Report location clearly and in accordance with any State requirements.)*

At surface

1560'S, 1800'E

At proposed prod. zone.

same

14. DISTANCE IN MILES AND DIRECTION FROM NEAREST TOWN OR POST OFFICE*

30 miles Northeast of Blanco, NM

15. DISTANCE FROM PROPOSED*

LOCATION TO NEAREST
PROPERTY OR LEASE LINE, FT.
(Also to nearest drlg. unit line, if any)

840'

18. DISTANCE FROM PROPOSED LOCATION*

TO NEAREST WELL, DRILLING, COMPLETED,
OR APPLIED FOR, ON THIS LEASE, FT.

2600'

16. NO. OF ACRES IN LEASE

unit

19. PROPOSED DEPTH

5965'

17. NO. OF ACRES ASSIGNED
TO THIS WELL

E/ 320.00

20. ROTARY OR CABLE TOOLS

Rotary

21. ELEVATIONS (Show whether DF, RT, GR, etc.)

6337'GR

22. APPROX. DATE WORK WILL START*

23.

PROPOSED CASING AND CEMENTING PROGRAM

SIZE OF HOLE	SIZE OF CASING	WEIGHT PER FOOT	SETTING DEPTH	QUANTITY OF CEMENT
13 3/4"	9 5/8"	32.3#	200'	224 cu.ft. to circulate
8 3/4"	7"	20.0#	3650'	300 cu.ft. to cover Ojo Alan
6 1/4"	4 1/2" liner	10.5#	3500-5965'	430 cu.ft. to fill to 3500'

Selectively perforate and sandwater fracture the Mesa Verde formation.

A 3000 psi WP and 6000 psi test double gate preventer equipped with blind and pipe rams will be used for blow out prevention on this well.

This gas is dedicated.

The E/2 of Section 7 is dedicated to this well.

IN ABOVE SPACE DESCRIBE PROPOSED PROGRAM: If proposal is to deepen or plug back, give data on present productive zone and proposed new productive zone. If proposal is to drill or deepen directionally, give pertinent data on subsurface locations and measured and true vertical depths. Give blowout preventer program, if any.

24.

SIGNED

J. D. Bures

TITLE

Drilling Clerk

DATE

10-17-78

(This space for Federal or State office use)

PERMIT NO.

APPROVAL DATE

APPROVED BY

TITLE

DATE

CONDITIONS OF APPROVAL, IF ANY:

ok Frank

*See Instructions On Reverse Side

RECEIVED
NOV 9 1978

U. S. GEOLOGICAL SURVEY

NEW MEXICO OIL CONSERVATION COMMISSION
WELL LOCATION AND ACREAGE DEDICATION PLAT

Form C-102
Supersedes C-128
Effective 1-1-65

All distances must be from the outer boundaries of the Section.

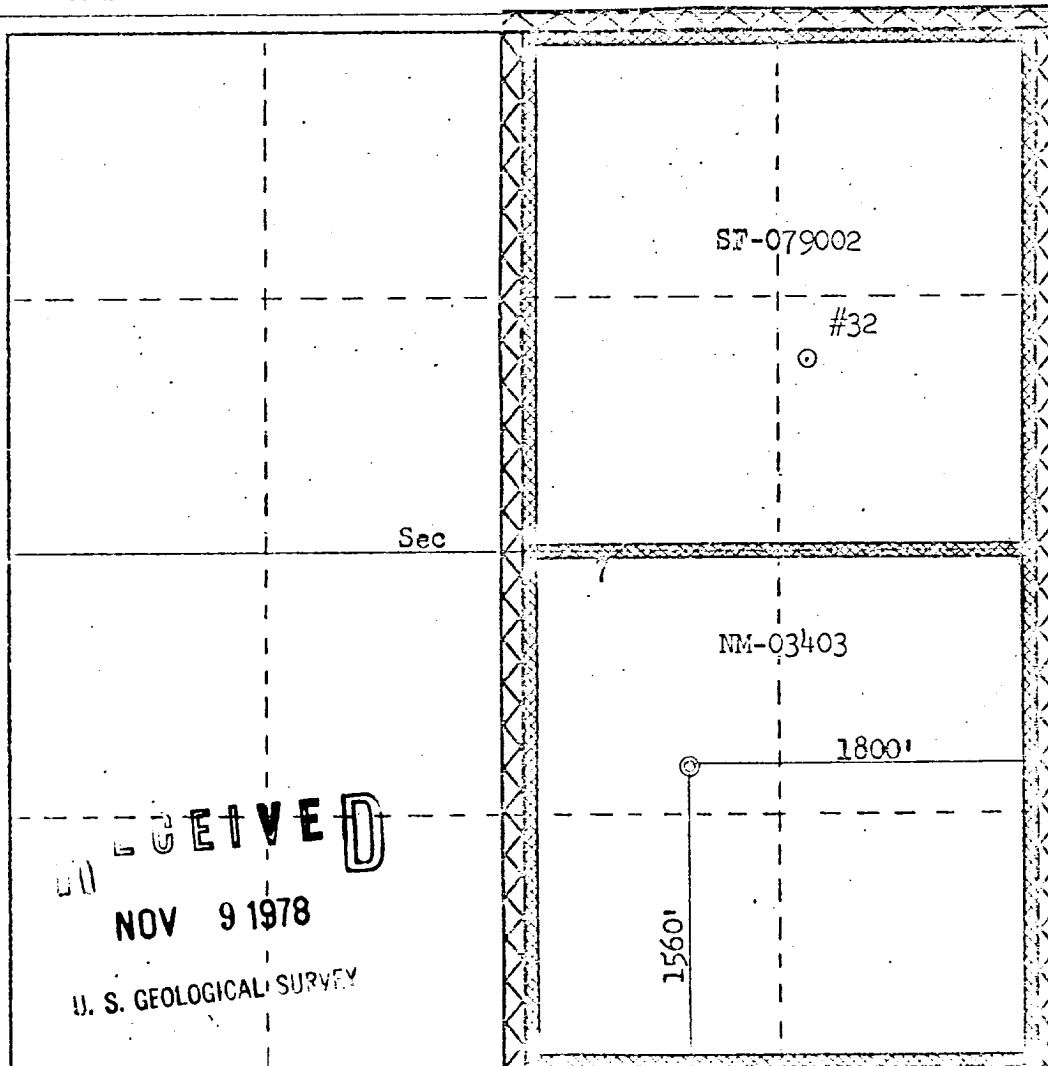
EL PASO NATURAL GAS COMPANY			SAN JUAN 30-6 UNIT (NM-03403)		Well No. 32A
Section J	Section 7	Township 30N	Range 6W	County RIO ARRIBA	
Actual Existing Location of Well:					
1560	feet from the	South	line and	1800	feet from the East line
Ground Level Elev. 6337	Producing Formation Mesa Verde		Pool Blanco Mesa Verde	Dedicated Acreage 320.00	

1. Outline the acreage dedicated to the subject well by colored pencil or hachure marks on the plat below.
2. If more than one lease is dedicated to the well, outline each and identify the ownership thereof (both as to working interest and royalty).
3. If more than one lease of different ownership is dedicated to the well, have the interests of all owners been consolidated by communitization, unitization, force-pooling, etc?

☒ Yes ☐ No If answer is "yes," type of consolidation Unitization

If answer is "no," list the owners and tract descriptions which have actually been consolidated. (Use reverse side of this form if necessary.)

No allowable will be assigned to the well until all interests have been consolidated (by communitization, unitization, forced-pooling, or otherwise) or until a non-standard unit, eliminating such interests, has been approved by the Commission.



CERTIFICATION

I hereby certify that the information contained herein is true and complete to the best of my knowledge and belief.

D. J. Lises
Name

Drilling Clerk
Position

El Paso Natural Gas
Company

October 17, 1978
Date

I hereby certify that the well location shown on this plat was plotted from field notes of actual surveys made by me or under my supervision, and that the same is true and correct to the best of my knowledge and belief.

Date Surveyed
August 15, 1978

Fred B. Kerr Jr.
Fred B. Kerr Jr.
Surveyor

3950

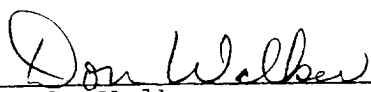
Multi-Point Surface Use Plan
San Juan 30-6 Unit #32A

1. Existing Road - Please refer to Map No. 1 which shows the existing roads. New roads which will be required have been marked on this map. All existing and new roads will be properly maintained during the duration of this project.
2. Planned Access Roads - Please refer to Map No. 1. The grade of the access roads will be consistent with that of the local terrain. The road surface will not exceed twenty feet (20') in width. Upon completion of the project, the access road will be adequately drained to control soil erosion. Drainage facilities may include ditches, water bars, culverts or any other measure deemed necessary by trained Company personnel to insure proper drainage. Gates and/or cattleguards will be installed if necessary.
3. Location of Existing Wells - Please refer to Map No. 2.
4. Location of Tank Batteries, Production Facilities, and Production Gathering and Service Lines - Please refer to Maps No. 1 and No. 2. Map No. 2 shows the existing gas gathering lines. Map No. 1 shows the existing roads and new proposed access roads. All known production facilities are shown on these two maps.
5. Location and Type of Water Supply - Water for the proposed project will be obtained from San Juan 30-6 Water Well.
6. Source of Construction Materials - No additional materials will be required to build either the access road or the proposed location.
7. Methods of Handling Waste Materials - All garbage and trash materials will be put into a burn pit shown on the attached Location Plat No. 1. When clean-up operations are begun on the proposed project, the burn pit with its refuse will be buried to a depth of at least three feet (3'). A latrine, the location of which is also shown on Plat No. 1,

RECEIVED

NOV 9 1978

7. cont'd. will be provided for human waste. If large amounts of liquids are left in the reserve pit after completion of the project, the pit will be fenced until the liquids have had adequate time to dry. The location clean-up will not take place until such time as the reserve pit can be properly covered over to prevent run-off from carrying any of these materials into the watershed. No earthen pit will be located on natural drainages; all earthen pits will be so constructed as to prevent leakage from occurring.
8. Ancillary Facilities - No camps or airstrips will be associated with this project.
9. Wellsite Layout - Please refer to the attached Plat No. 1.
10. Plans for Restoration of the Surface - After completion of the proposed project, the location will be cleaned and leveled. The location will be left in such a condition that will enable reseeded operations to be carried out. Seed mixture as designated by the responsible government agency will be used. The reseeded operation will be performed during the time period set forth by the regulatory body. The location production equipment will be painted as designated by the responsible government agency.
11. Other Information - The terrain is rolling hills and sagebrush flats with sagebrush growing. Cattle graze the proposed project site.
12. Operator's Representative - W.D. Dawson, PO Box 990, Farmington, NM
13. Certification - I hereby certify that I, or persons under my direct supervision, have inspected the proposed drillsite and access route; that I am familiar with the conditions which presently exist; that the statements made in this plan are, to the best of my knowledge, true and correct; and that the work associated with the operations proposed herein will be performed by El Paso Natural Gas Company and its contractors and sub-contractors in conformity with this plan and the terms and conditions under which it is approved.


D. C. Walker
Project Drilling Engineer

RECEIVED

NOV 9 1978

U. S. GEOLOGICAL SURVEY

October 17, 1978

Operations Plan
San Juan 30-6 Unit #32A

I. Location: 1560'S, 1800'E, Section 7, T-30-N, R-6-W, Rio Arriba County, NM

Field: Blanco Mesa Verde

Elevation: 6337'GR

II. Geology:

A. Formation Tops:	Surface	San Jose	Lewis	3450'
	Ojo Alamo	2320'	Mesa Verde	5193'
	Kirtland	2450'	Menefee	5293'
	Fruitland	2982'	Point Lookout	5517'
	Pic.Cliffs	3303'	Total Depth	5965'

B. Logging Program: GR-Ind. and GR-Density at Total Depth.

C. Coring Program: none

D. Natural Gauges: 5183', 5283', 5507' and at Total Depth.
Also gauge any noticeable increase in gas. Record all gauges in daily drilling report and on morning report.

III. Drilling:

A. Mud Program: mud from surface to 3650'. Gas from intermediate casing to Total Depth.

IV. Materials:

A. Casing Program:	Hole Size	Depth	Casing Size	Wt.&Grade
	13 3/4"	200'	9 5/8"	32.3# H-40
	8 3/4"	3650'	7"	20.0# K-55
	6 1/4"	3500-5965'	4 1/2"	10.5# K-55

B. Float Equipment: 9 5/8" surface casing - Pathfinder guide shoe (Part #2006-1-012).

7" intermediate casing - Pathfinder guide shoe (Part #1003-1-007) and Pathfinder self-fill insert float valve (Part #2010-6-007), 5 Pathfinder stabilizers (Part #107-10) every other joint above shoe. Run float two joints above shoe.

4 1/2" liner - 4 1/2" liner hanger with neoprene packoff. Pathfinder geyser shoe (Part #2017-1-050) and Larkin flapper type float collar (fig. 404 M&F).

C. Tubing: 5965' of 2 3/8", 4.7#, J-55 8rd EUE tubing with a common pump seating nipple one joint above bottom. Tubing will be open ended.

D. Wellhead Equipment: 10" 900 x 9 5/8" casing head. 10" 900 x 6" 900 xmas tree.

RECEIVED
NOV 9 1978

U. S. GEOLOGICAL SURVEY

Operations Plan - San Juan 30-6 Unit #32A

V. Cementing:

9 5/8" surface casing - use 190 sks. of Class "B" cement with 1/4# gel-flake per sack and 3% calcium chloride (224 cu.ft. of slurry, 100% excess to circulate to surface). WOC 12 hours. Test casing to 600#/30 minutes.

7" intermediate casing - use 112 sks. of 65/35 Class "B" Poz with 6% gel and 2% calcium chloride (8.3 gallons of water per sack) followed by 100 sks. of Class "B" with 2% calcium chloride (300 cu.ft. of slurry, 50% excess to cover Ojo Alamo). Run temperature survey at 8 hours. WOC 12 hours. Test casing to 1200#/30 minutes.

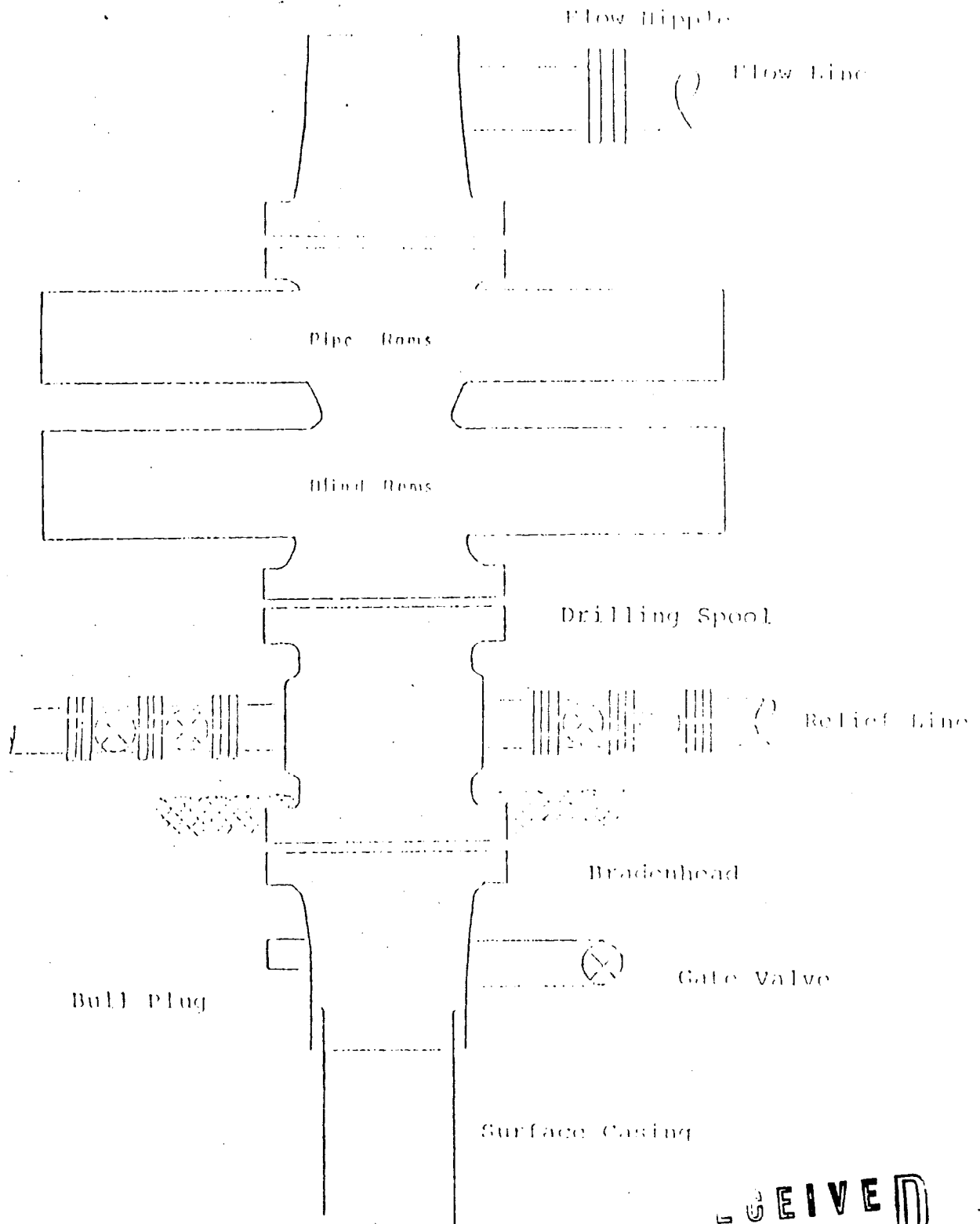
4 1/2" liner - precede cement with 20 barrels of gel water (2 sks. gel) Cement with 309 sks. of 50/50 Class "B" Poz with 2% gel, 0.6% Halad-9, 6.25# gilsonite plus 1/4# Flocele per sack (430 cu.ft. of slurry, 70% excess to circulate liner). WOC 18 hours.

RECEIVED

NOV 9 1978

U. S. GEOLOGICAL SURVEY

Typical B.O.P. Installation
for Mega Verde Well



Series 900 Double Gate BOP, rated
at 3000 psi Working Pressure

When gas drilling operations begin a Shaffer type or equivalent rotating head is installed on top of the
flow nipple and the flow line is converted into a blowie line

RECEIVED

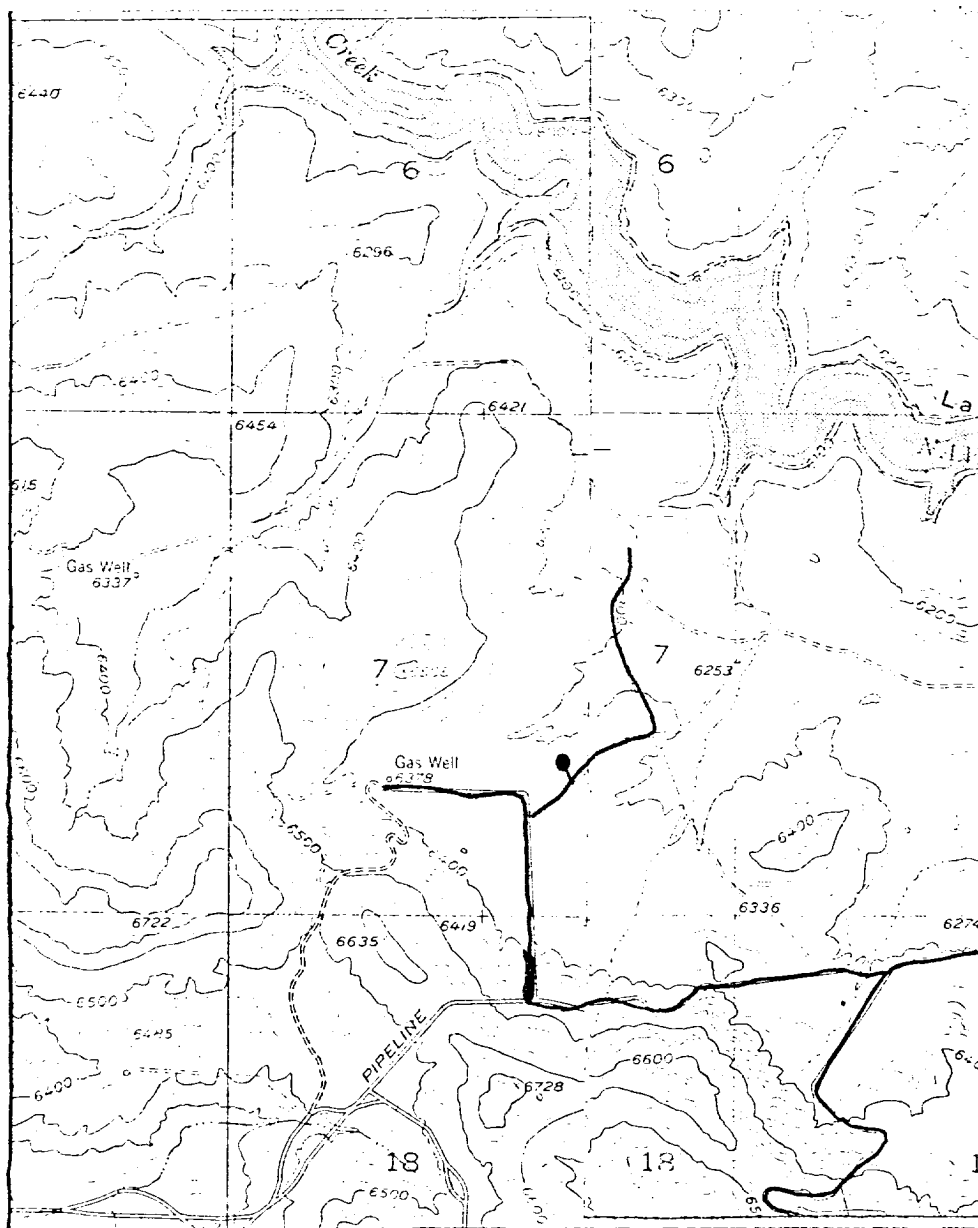
NOV 9 1978

U.S. GEOLOGICAL SURVEY

EL PASO NATURAL GAS COMPANY
 San Juan 30-6 #32 A
 SE 7-30-6

R-6-W

T
30
N



Map #1

RECEIVED

NOV 9 1978

U. S. GEOLOGICAL SURVEY

LEGEND OF RIGHT-OF-WAYS

EXISTING ROADS	—————
EXISTING PIPELINES	+++
EXISTING ROAD & PIPELINE	++++
PROPOSED ROADS	—————
PROPOSED PIPELINES	+++
PROPOSED ROAD & PIPELINE	++++

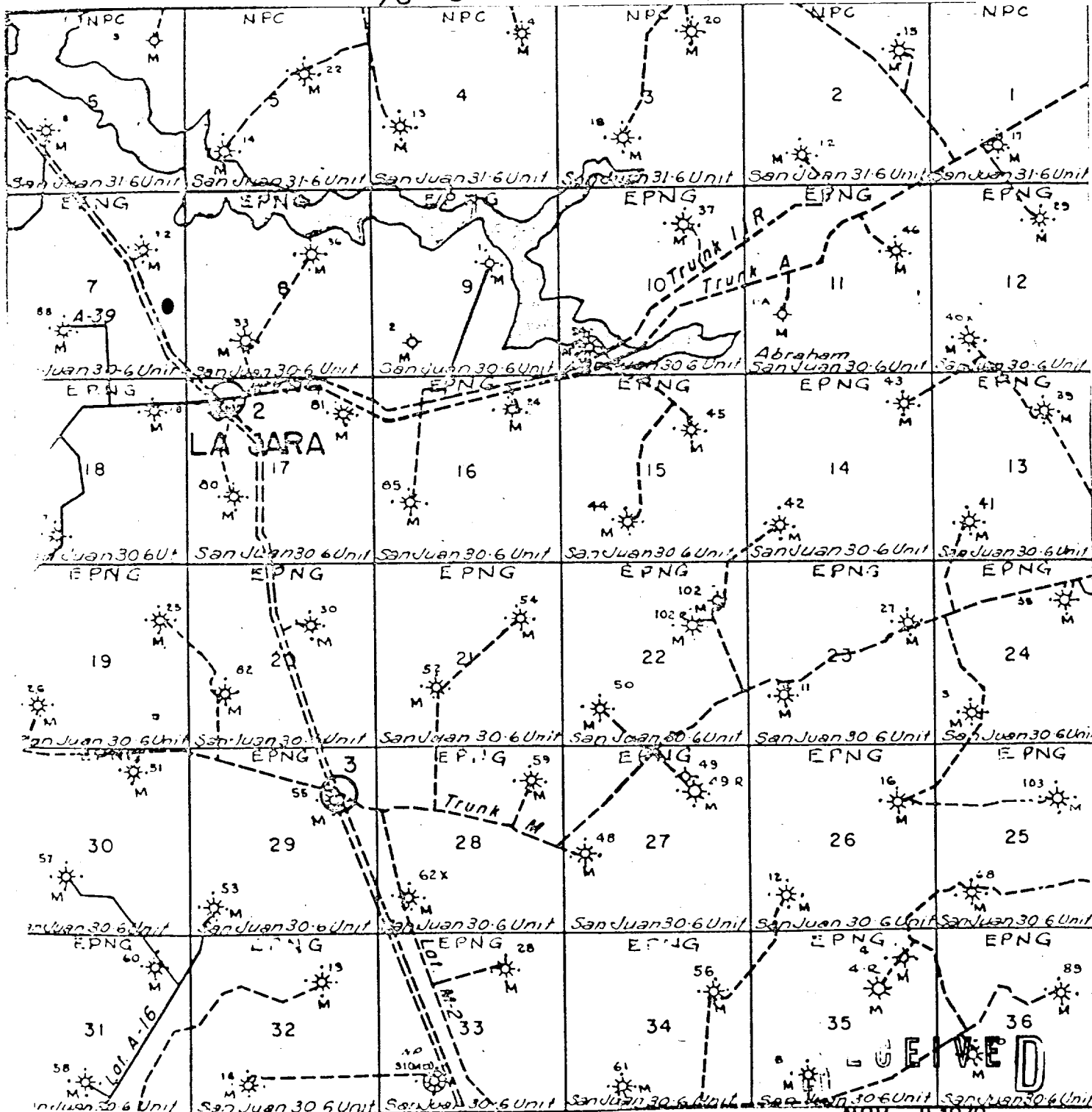
EL PASO NATURAL GAS COMPANY

San Juan 30-6 #32 A

SE 7-30-6

R-6-W

T
30
N



Map #2

Proposed Location

● U. S. GEOLOGICAL SURVEY

UNITED STATES
DEPARTMENT OF THE INTERIOR
GEOLOGICAL SURVEY

SUNDRY NOTICES AND REPORTS ON WELLS

(Do not use this form for proposals to drill or to deepen or plug back to a different reservoir. Use Form 9-331-C for such proposals.)

1. oil ☐ well ☐ gas ☒ well ☐ other ☐
2. NAME OF OPERATOR
EL PASO NATURAL GAS COMPANY
3. ADDRESS OF OPERATOR
Box 289 Farmington, New Mexico 87401
4. LOCATION OF WELL (REPORT LOCATION CLEARLY. See space 17 below.)
AT SURFACE: 1560' S, 1800' E
AT TOP PROD. INTERVAL:
AT TOTAL DEPTH:

16. CHECK APPROPRIATE BOX TO INDICATE NATURE OF NOTICE, REPORT, OR OTHER DATA

REQUEST FOR APPROVAL TO:

TEST WATER SHUT-OFF ☐
FRACTURE TREAT ☐
SHOOT OR ACIDIZE ☐
REPAIR WELL ☐
PULL OR ALTER CASING ☐
MULTIPLE COMPLETE ☐
CHANGE ZONES ☐
ABANDON* ☐
(other) ☐

SUBSEQUENT REPORT OF:

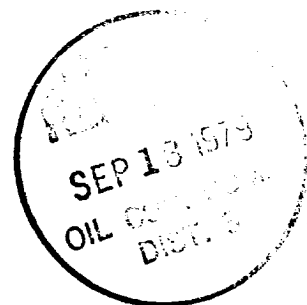
☒
☐
☐
☐
☐
☐
☐
☐
☐

5. LEASE
New Mexico 03403
6. IF INDIAN, ALLOTTEE OR TRIBE NAME
7. UNIT AGREEMENT NAME
San Juan 30-6 Unit
8. FARM OR LEASE NAME
San Juan 30-6 Unit
9. WELL NO.
32A
10. FIELD OR WILDCAT NAME
Blanco - Mesa Verde
11. SEC., T., R., M., OR BLK. AND SURVEY OR AREA
Sec. 7, T-30N, R-6-W
N.M.P.M.
12. COUNTY OR PARISH
Rio Arriba
13. STATE
New Mexico
14. API NO.
15. ELEVATIONS (SHOW DF, KDB, AND WD)
6337' 'GL

(NOTE: Report results of multiple completion or zone change on Form 9-330.)

17. DESCRIBE PROPOSED OR COMPLETED OPERATIONS (Clearly state all pertinent details, and give pertinent dates, including estimated date of starting any proposed work. If well is directionally drilled, give subsurface locations and measured and true vertical depths for all markers and zones pertinent to this work.)*

9-2-79 Spudded well. Drilled surface hole. Ran 5 joints 9 5/8", 36#, KS surface casing 206' set at 220'. Cemented with 224 cubic feet cement. Circulated to surface. WOC 12 hours held 600# / 30 minutes.



Subsurface Safety Valve: Manu. and Type _____ Set @ _____ Ft.

18. I hereby certify that the foregoing is true and correct

SIGNED D. G. Brisco TITLE Drilling Clerk DATE Sept. 6, 1979

(This space for Federal or State office use)

APPROVED BY _____ TITLE _____ DATE _____
CONDITIONS OF APPROVAL, IF ANY:

SEP 12 1979