

UNITED STATES
DEPARTMENT OF THE INTERIOR
GEOLOGICAL SURVEY

APPLICATION FOR PERMIT TO DRILL, DEEPEN, OR PLUG BACK

1a. TYPE OF WORK

DRILL ☒DEEPEN ☐PLUG BACK ☐

b. TYPE OF WELL

OIL
WELL ☐GAS
WELL ☒

OTHER

SINGLE
ZONE ☐MULTIPLE
ZONE ☒

2. NAME OF OPERATOR

Southland Royalty Company

3. ADDRESS OF OPERATOR

P. O. Drawer 570, Farmington, New Mexico

4. LOCATION OF WELL (Report location clearly and in accordance with any State requirements.)*

At surface

1800' FNL & 960' FEL

At proposed prod. zone

14. DISTANCE IN MILES AND DIRECTION FROM NEAREST TOWN OR POST OFFICE*

17 miles north of Gobernador, New Mexico

15. DISTANCE FROM PROPOSED*

LOCATION TO NEAREST
PROPERTY OR LEASE LINE, FT.
(Also to nearest drlg. unit line, if any)

16. NO. OF ACRES IN LEASE

17. NO. OF ACRES ASSIGNED
TO THIS WELL

267.14

18. DISTANCE FROM PROPOSED LOCATION*
TO NEAREST WELL, DRILLING, COMPLETED,
OR APPLIED FOR, ON THIS LEASE, FT.

19. PROPOSED DEPTH

8450'

20. ROTARY OR CABLE TOOLS

Rotary

21. ELEVATIONS (Show whether DF, RT, GR, etc.)

6734' GR

22. APPROX. DATE WORK WILL START*

June 15, 1979

23.

PROPOSED CASING AND CEMENTING PROGRAM

SIZE OF HOLE	SIZE OF CASING	WEIGHT PER FOOT	SETTING DEPTH	QUANTITY OF CEMENT
12-1/4"	9-5/8"	36#	200'	160 sxs
8-3/4"	5-1/2"	15.5#	0-6330'	240 sxs - Stage 1
7-7/8"	5-1/2"	15.5#	6330-8450'	145 sxs - Stage 2
	2-1/16"	3.25#	8300'	195 sxs - Stage 3
	1-1/2"	2.3#	6200'	

Surface formation is San Jose.

Top of Ojo Alamo sand is at 2820. Top of Pictured Cliffs sand is at 3525'.

Fresh water mud will be used to drill from surface to total depth.

It is anticipated that an IES and a GR-Density log will be run at total depth.

No abnormal pressures or poisonous gases are anticipated in this well.

It is expected that this well will be drilled before August 15, 1979. This depends on time required for approvals, rig availability and the weather.

Dakota gas is dedicated.

Mesaverde gas is not dedicated.

IN ABOVE SPACE DESCRIBE PROPOSED PROGRAM: If proposal is to deepen or plug back, give data on present productive zone and proposed new productive zone. If proposal is to drill or deepen directionally, give pertinent data on subsurface locations and measured and true vertical depths. Give blowout preventer program, if any.

24.

SIGNED

TITLE

District Production Manager

DATE

May 16, 1979

(This space for Federal or State office use)

PERMIT NO.

APPROVAL DATE

APPROVED BY

TITLE

DATE

CONDITIONS OF APPROVAL, IF ANY:

*See Instructions On Reverse Side

30-039-22060

5. LEASE DESIGNATION AND SERIAL NO.

NM-4453

6. IF INDIAN, ALLOTTEE OR TRIBE NAME

7. UNIT AGREEMENT NAME

8. FARM OR LEASE NAME

Carson

9. WELL NO.

#3

10. FIELD AND POOL, OR WILDCAT
Blanco Mesaverde

Basin Dakota

11. SEC., T., R., M., OR BLE.
AND SURVEY OR AREA

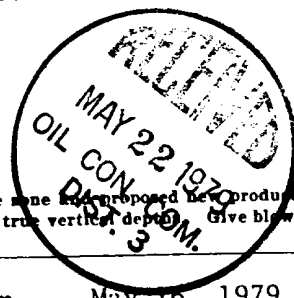
Section 1-30N-5W

12. COUNTY OR PARISH

Rio Arriba

13. STATE

New Mexico



**NEW MEXICO OIL CONSERVATION COMMISSION
WELL LOCATION AND ACREAGE DEDICATION PLAT**

Form C-102
Supersedes C-128
Effective 1-1-65

All distances must be from the outer boundaries of the Section.

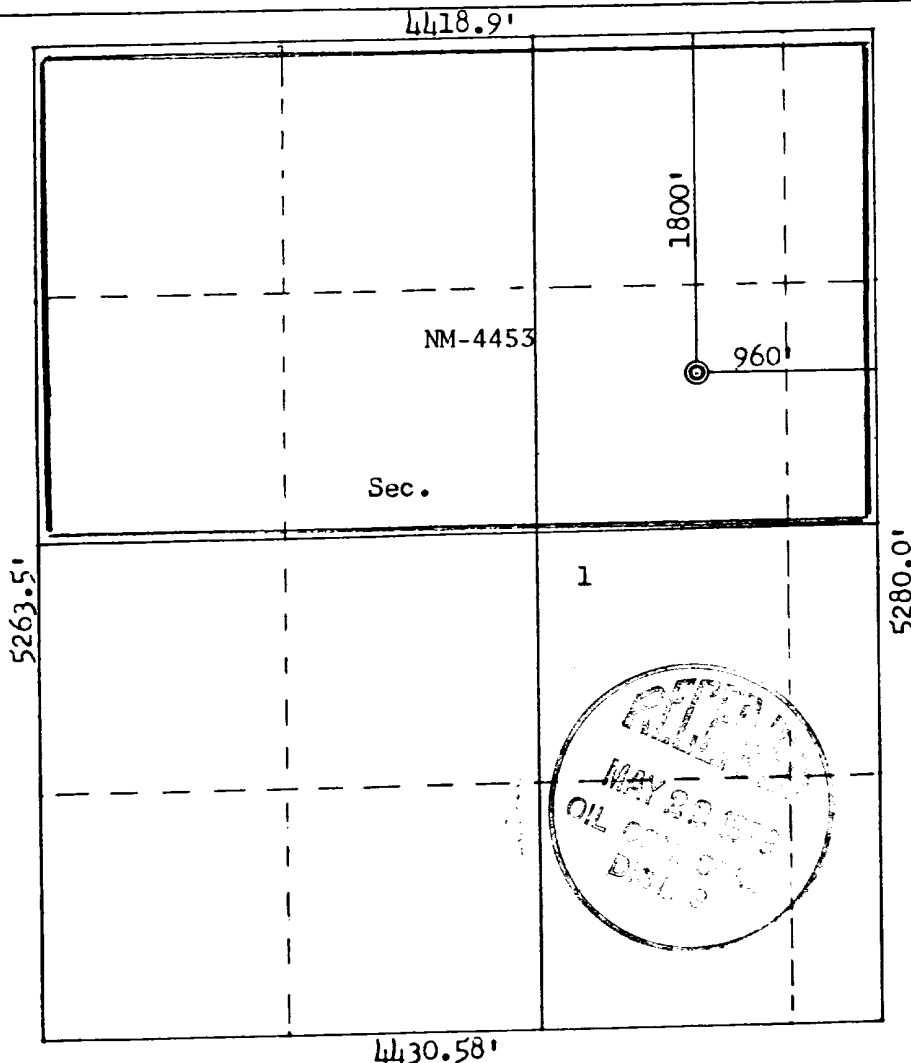
Operator SOUTHLAND ROYALTY COMPANY			Lease CARSON		Well No. 3
Unit Letter G	Section 1	Township 30N	Range 5W	County Rio Arriba	
Actual Footage Location of Well: 1800 feet from the North line and 960 feet from the East line					
Ground Level Elev. 6734	Producing Formation Mesa Verde-Dakota		Pool Blanco - Basin		Dedicated Acreage: 267.14 Acres

1. Outline the acreage dedicated to the subject well by colored pencil or hatchure marks on the plat below.
2. If more than one lease is dedicated to the well, outline each and identify the ownership thereof (both as to working interest and royalty).
3. If more than one lease of different ownership is dedicated to the well, have the interests of all owners been consolidated by communitization, unitization, force-pooling, etc?

☐ Yes ☐ No If answer is "yes," type of consolidation _____

If answer is "no," list the owners and tract descriptions which have actually been consolidated. (Use reverse side of this form if necessary.) _____

No allowable will be assigned to the well until all interests have been consolidated (by communitization, unitization, forced-pooling, or otherwise) or until a non-standard unit, eliminating such interests, has been approved by the Commission.



CERTIFICATION

I hereby certify that the information contained herein is true and complete to the best of my knowledge and belief.

Name _____
 Position _____
District Production Manager
 Company _____
Southland Royalty Company
 Date _____
May 16, 1979

I hereby certify that the well location shown on this plat was plotted from field notes of actual surveys made by me or under my supervision, and that the same is true and correct to the best of my knowledge and belief.

Date Surveyed _____
April 8, 1979
 Registered Professional Engineer and Land Surveyor
Fred B. Kerr Jr.
 Certificate No. _____
3950

DRILLING SCHEDULE - CARSON #3

Location: 1800' FNL & 960' FEL, Section 1, T30N, R5W, Rio Arriba County, New Mexico

Field: Blanco Mesaverde/Basin Dakota

Elevation: 6734' GR

Geology:

Formation Tops:	Ojo Alamo	2820'		
	Fruitland	3450'	Graneros	8050'
	Pictured Cliffs	3525'	Dakota	8200'
	Cliff House	5760'	Total Depth	8450'
	Point Lookout	5980'		(Add 50' if hole gets we

Logging Program: GR-Density and IES at total depth.

Coring Program: None

Natural Gauges: None

Drilling:

Contractor:

Tool Pusher:

SRC Representative:

SRC Ans. Service: 325-1841
Dispatch Number: 325-7391

Mud Program: Fresh water mud from surface to total depth.

Materials:

Casing Program:	<u>Hole Size</u>	<u>Depth</u>	<u>Casing Size</u>	<u>Wt & Grade</u>
	12-1/4"	200'	9-5/8"	36# K-55
	8-3/4"	1200'	5-1/2"	15.5# K-55, LT&
	8-3/4"	6330'	5-1/2"	15.5# K-55, ST&
	7-7/8"	6950'	5-1/2"	15.5#,K-55, ST&
	7-7/8"	8450'	5-1/2"	15.5#, N-80, ST

Float Equipment:

9-5/8" surface casing: Pathfinder, Type "A" guide shoe.
5-1/2" Production String: Pathfinder cement guide shoe. Flapper type self-fill float collar 40' off bottom. Dowell stage tools at 6330'. Dowell stage tool at 3800'.
Tubing: 6200' of 1-1/2", 2.3#, IJ, 10rd.
8300' of 2-1/16", 3.25#, J-55, IJ, 10rd.
Wellhead Equipment: 9-5/8" X 10", 2000# casing head.
10", 2000# X 6", 2000# tubing head.

Cement Program: 9-5/8" surface casing - 160 sxs Class "B" with 1/4# gel flake and 3% CaCl.
5-1/2" production string- Stage 1: 240 sxs 50/50 Class "B" Poz with 6% gel, 1/4# gel flake per sx and .6% Halad 9. (358 cu. ft.) 25% excess to cover Gallup.
Stage 2: 145 sxs 50/50 Class "B" Poz with 6% gel, 1/4# gel flake per sack and .6% Halad 9. (216 cu. ft.) 50% excess to cover top of Cliff House.
Stage 3: 195 sxs 50/50 Class "B" Poz with 6% gel followed by 70 sxs Class "B" with 2% CaCl. (372 cu. ft.) 50% excess to cover Ojo Alamo.

Circulate and WOC between stages as required by well conditions.



Southland Royalty Company

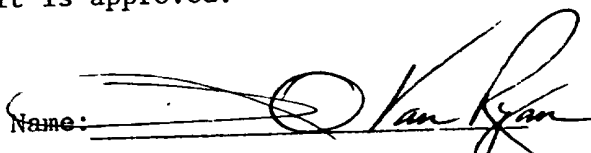
United States Geological Survey
P. O. Box 1809
Durango, Colorado

Attention: Mr. Jerry Long

Dear Sir:

I hereby certify that I, or persons under my direct supervision, have inspected the proposed drillsite and access route; that I am familiar with the conditions which presently exist; that the statements made in this plan are, to the best of my knowledge, true and correct; and, that the work associated with the operations proposed herein be performed by Southland Royalty Company and its contractors and subcontractors in conformity with this plan and the terms and conditions under which it is approved.

Date: May 16, 1979

Name: 
Title: District Production Manager



Southland Royalty Company

May 16, 1979

United States Geological Survey
P. O. Box 1809
Durango, Colorado 81301

Attention: Mr. Jerry Long

Dear Sir:

Enclosed please find map showing existing roads and planned access roads to Southland Royalty Company's Carson #3 well. The locations of tank batteries and flow lines will be on location with well. A burn pit will be provided for disposal of trash. Cuttings, drilling fluid and produced fluids will be put into the reserve pit and properly disposed of depending on amount and type of fluids.

Contractor will furnish restroom facilities on location.

There will be no air strips or camps.

Also, enclosed is a location layout showing approximate location of rig, pits, pipe racks and cut required to build this location.

Water supply will be La Jara Wash. All water will be transported by truck and stored on location.

The location will be restored according to Forest Service standards. This work will begin when all related construction is finished.

Mr. Ross Lankford will be Southland Royalty Company's field representative supervising these operations.

Yours truly,

L. O. Van Ryan
District Production Manager

LOVR/dg



Southland Royalty Company

May 16, 1979

United States Geological Survey
P. O. Box 1809
Durango, Colorado

Attention: Blowout Preventer Plan

Dear Sir:

All drilling and completion rigs will be equipped with 6" or larger double gate hydraulic blowout preventers and a hydraulic operated closing unit with steel lines.

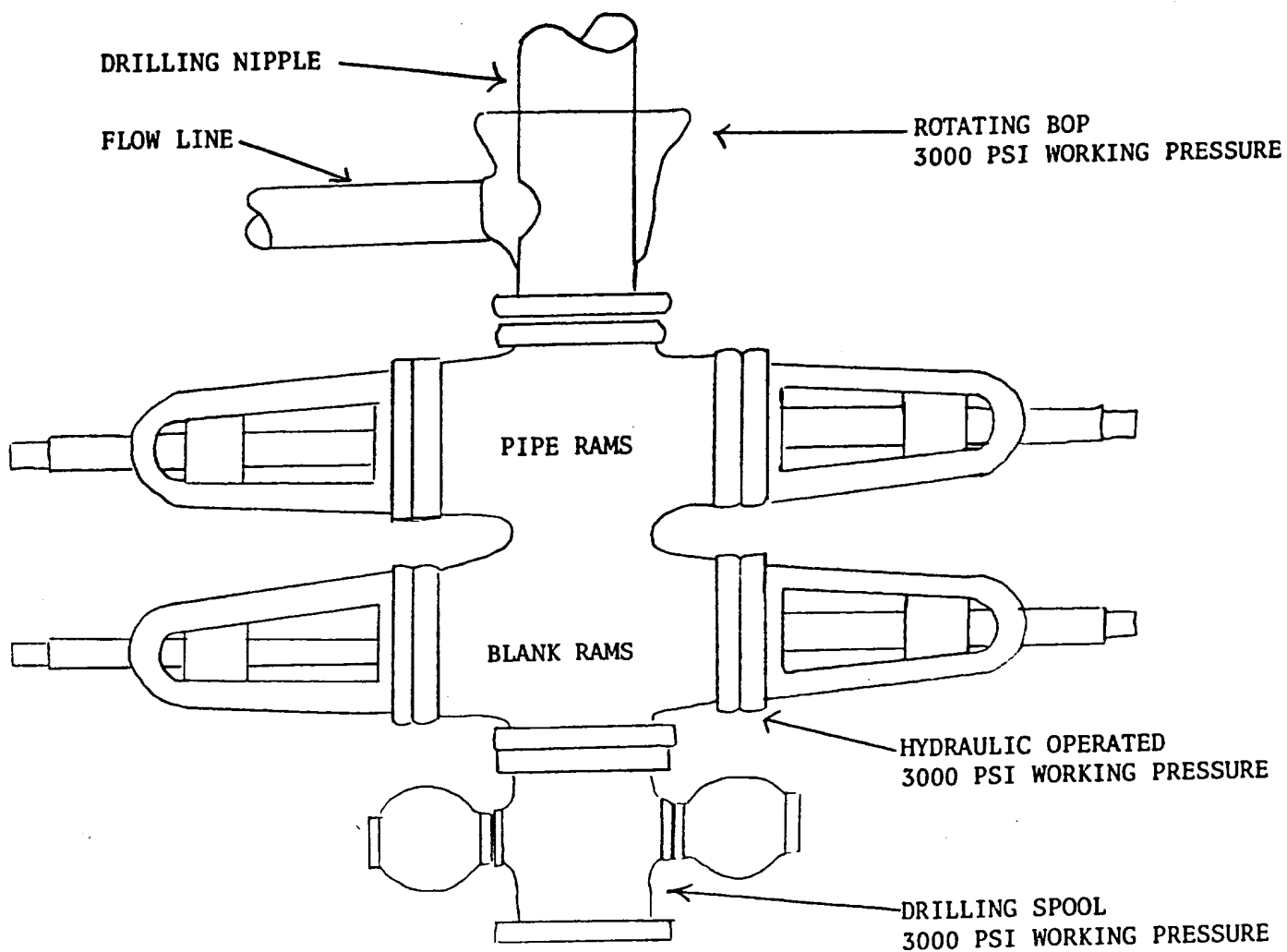
The preventer is 3000# working pressure and 6000# test.

All crews will be thoroughly trained in the operation of this preventer. The preventer will be tested frequently enough to insure proper operation.

Yours truly,

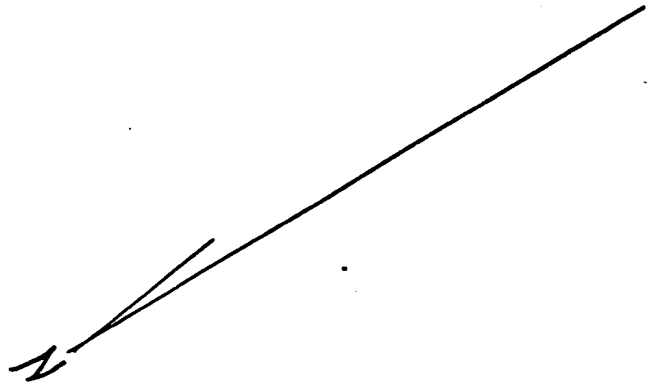
L. O. Van Ryan
District Production Manager

LOVR/dg



PREVENTERS AND SPOOLS ARE TO HAVE
THROUGH BORE OF 6" - 3000 PSI OR LARGER

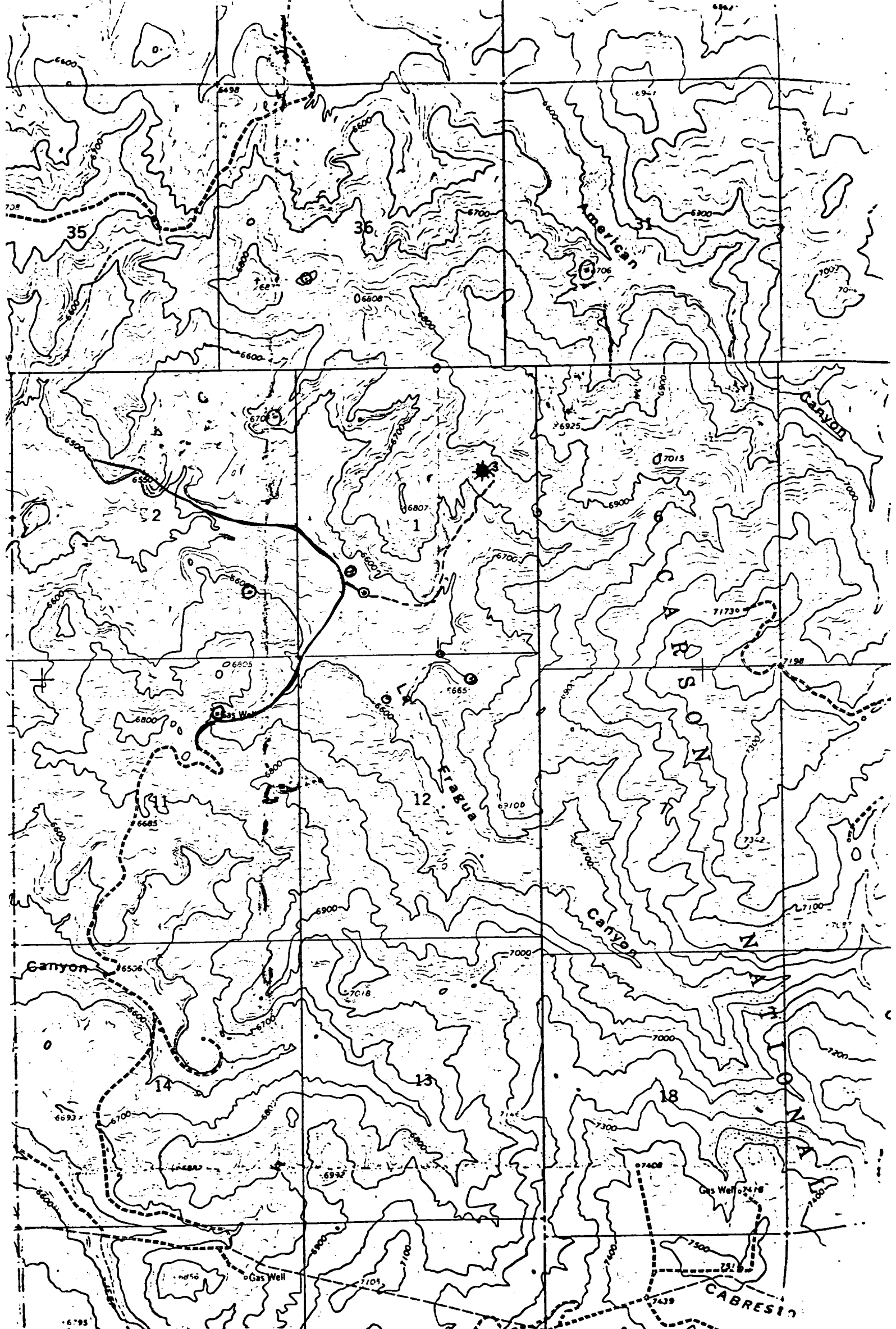
SECRET



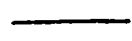



Vert. $1'' = 40'$	A - A' &	Horiz. $1'' = 100'$
6750		
6740		
6730		
6720		

6750	
6740	
6730	
6720	

KERR LAND SURVEYING
Date: 4/8/79



PROPOSED LOCATION 
EXISTING LOCATION 
PROPOSED ROAD 
EXISTING ROADS 

Vicinity Map for
SOUTHLAND ROYALTY COMPANY #3 CARSON
1800'FNL 960'FEL Sec 1-T30N-R5W
RIO ARriba COUNTY, NEW MEXICO