

UNITED STATES
DEPARTMENT OF THE INTERIOR
GEOLOGICAL SURVEY

APPLICATION FOR PERMIT TO DRILL, DEEPEN, OR PLUG BACK

1a. TYPE OF WORK

DRILL ☒DEEPEN ☐PLUG BACK ☐

b. TYPE OF WELL

OIL
WELL ☐GAS
WELL ☒

OTHER

SINGLE
ZONE ☒MULTIPLE
ZONE ☐

2. NAME OF OPERATOR

Northwest Pipeline Corporation

3. ADDRESS OF OPERATOR

P.O. Box 90 - Farmington, N.M. 87401

4. LOCATION OF WELL (Report location clearly and in accordance with any State requirements.*)

At surface

900' FWL & 850' FSL

At proposed prod. zone

14. DISTANCE IN MILES AND DIRECTION FROM NEAREST TOWN OR POST OFFICE*

NA

15. DISTANCE FROM PROPOSED*

LOCATION TO NEAREST
PROPERTY OR LEASE LINE, FT.
(Also to nearest drilg. unit line, if any)

850'

16. NO. OF ACRES IN LEASE

NA

17. NO. OF ACRES ASSIGNED
TO THIS WELL

160

18. DISTANCE FROM PROPOSED LOCATION*

TO NEAREST WELL, DRILLING, COMPLETED,
OR APPLIED FOR, ON THIS LEASE, FT.

5200'

19. PROPOSED DEPTH

3800'

20. ROTARY OR CABLE TOOLS

Rotary

21. ELEVATIONS (Show whether DF, RT, GR, etc.)

6721' GR

22. APPROX. DATE WORK WILL START*

July 25, 1979

23.

PROPOSED CASING AND CEMENTING PROGRAM

SIZE OF HOLE	SIZE OF CASING	WEIGHT PER FOOT	SETTING DEPTH	QUANTITY OF CEMENT
12 1/4"	8 5/8"	24#	150'	90 sks.
6 3/4"	2 7/8"	6.4#	3800'	120 sks.

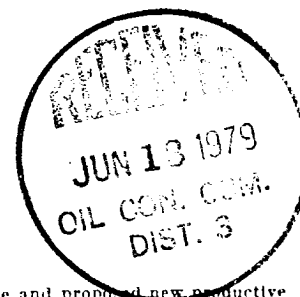
Selectively perforate and stimulate the Pictured Cliffs formation.

A BOP will be installed after the surface casing has been run and cemented.

All subsequent operations will be conducted through the BOP.

The SW/4 of Section 32 is dedicated to this well.

Gas is dedicated.



IN ABOVE SPACE DESCRIBE PROPOSED PROGRAM: If proposal is to deepen or plug back, give data on present productive zone and proposed new productive zone. If proposal is to drill or deepen directionally, give pertinent data on subsurface locations and measured and true vertical depths. Give blowout preventer program, if any.

24.

SIGNED

S. G. Katigis
S. G. Katigis

TITLE

Production Engineer

DATE 6/4/79

(This space for Federal or State office use)

PERMIT NO.

APPROVAL DATE

APPROVED BY

TITLE

CONDITIONS OF APPROVAL, IF ANY:

R E G E

JUN 12 1979

*See Instructions On Reverse Side

GEOLOGICAL SURVEY
OF THE UNITED STATES

OIL CONSERVATION DIVISION

STATE OF NEW MEXICO
ENERGY AND MINERALS DEPARTMENTP. O. BOX 2088
SANTA FE, NEW MEXICO 87501Form C-107
Revised 10-1-78

All distances must be from the outer boundaries of the Section.

Operator NORTHWEST PIPELINE CORPORATION			Lease SAN JUAN 30-5 UNIT		Well No. 69
Unit Letter M	Section 32	Township 30N	Range 5W	County Rio Arriba	
Actual Footage Location of Well: 850 feet from the South line and 900 feet from the West line					
Ground Level Elev. 6721	Producing Formation Pictured Cliffs		Pool UNDESIGNATED	Dedicated Acreage: 160 Acres	

1. Outline the acreage dedicated to the subject well by colored pencil or hachure marks on the plat below.
2. If more than one lease is dedicated to the well, outline each and identify the ownership thereof (both as to working interest and royalty).
3. If more than one lease of different ownership is dedicated to the well, have the interests of all owners been consolidated by communitization, unitization, force-pooling, etc?

☐ Yes ☐ No If answer is "yes," type of consolidation _____

If answer is "no," list the owners and tract descriptions which have actually been consolidated. (Use reverse side of this form if necessary.) _____

No allowable will be assigned to the well until all interests have been consolidated (by communitization, unitization, forced-pooling, or otherwise) or until a non-standard unit, eliminating such interests, has been approved by the Commission.

CERTIFICATION

I hereby certify that the information contained herein is true and complete to the best of my knowledge and belief.

Name

W.J. Billman

Position

Drilling Engineer

Company

Northwest Pipeline Corp.

Date

July 25, 1979

I hereby certify that the well location shown on this plat was plotted from field notes of actual surveys made by me or under my supervision, and that the same is true and correct to the best of my knowledge and belief.

Date Surveyed

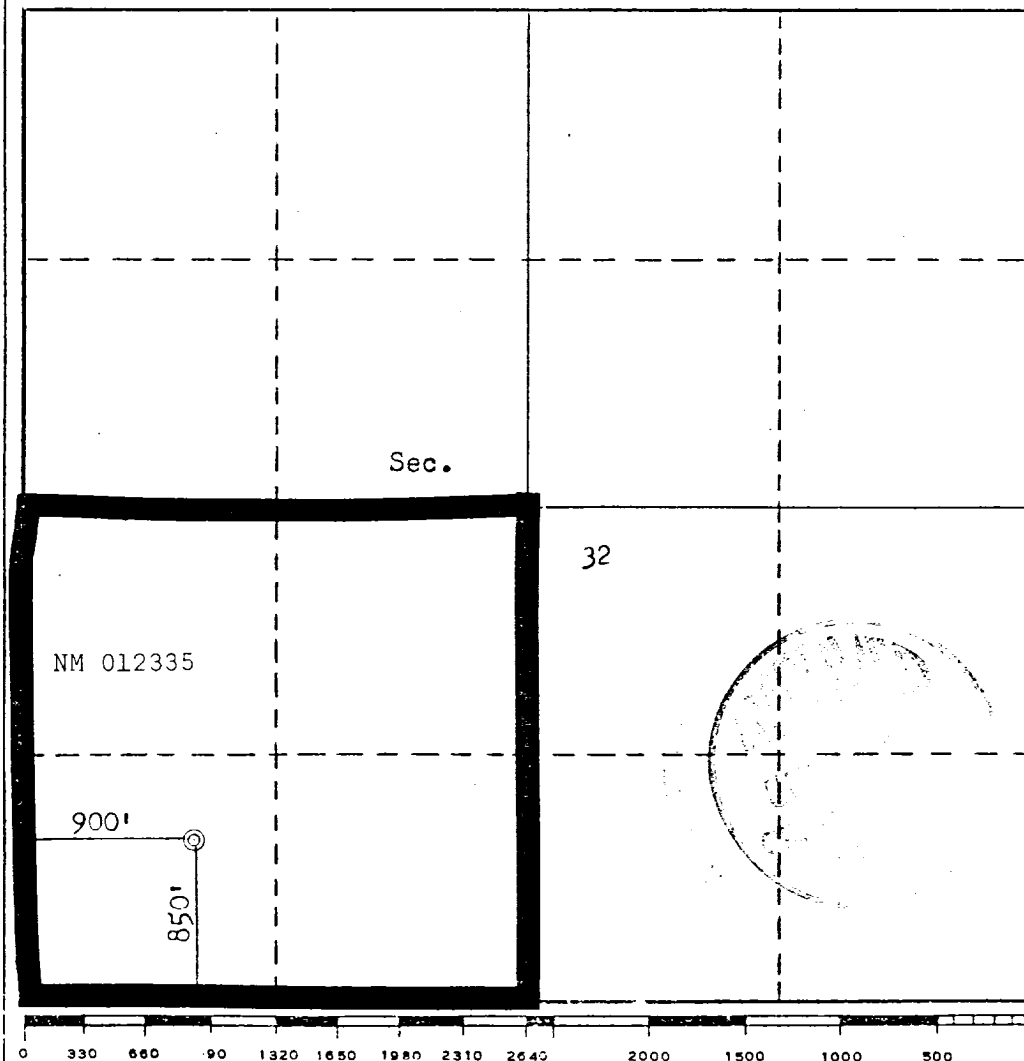
April 29, 1979

Registered Professional Engineer and/or Land Surveyor

Fred E. Kerr Jr.

Certificate No.

3950



OPERATIONS PLAN

San Juan 30-5 Unit #69

June 4, 1979

I. LOCATION: SW/4 SW/4 Sec. 32, T30N, R5W

LEASE NUMBER: NM 012335

FIELD: Blanco Pictured Cliffs

ELEVATION: 6721' GR

II. GEOLOGY:

A. Formation Tops	Depth:
Ojo Alamo	2843'
Kirtland	2995'
Fruitland	3364'
Pictured Cliffs	3675'
Total Depth	3800'

B. Logging Program: IES & CNL-FDC

C. Coring Program: None

D. Testing Program: None

III. DRILLING:

A. Anticipated starting date and duration of activities: July 25, 1979, 2 weeks.

B. BOP: Blind rams and pipe rams, 10", 900 series, double gate, rated at 3000 PSI.

C. Mud Program:

- a) Spud Mud: Water, lime and gel.
- b) Surface to 2950'.

Viscosity: 25-30 sec/qt.

Weight: 8.9-9.0 #/gal.

Water Loss: 7-12 cc

Ph: 8.5-9.5

c) From 2950' to 3800'.

Viscosity: 38-60 sec/qt.

Weight: 9.0-9.5 #/gal.

Water Loss: 7-12 cc

Ph: 8.5-9.5

IV. MATERIALS:

A. Casing Program:

<u>Hole Size</u>	<u>Depth O.H.</u>	<u>Casing Size</u>	<u>Wt. & Grade</u>	<u>Depth Set</u>
12 1/4"	150'	8 5/8"	24# K-55	150
6 1/4"	3800'	2 7/8"	6.4# J-55	T.D.

V. CEMENTING:

- A. Surface Casing: 8 5/8" - Use 90 sks. Class "B" cement with 1/4# flocele per sack and 3% Calcium Chloride (100% excess to circulate). WOC 12 hours. Test surface casing to 600 PSI for 30 minutes.

- B. Production Casing: 2 7/8" - Use 120 sacks 65/35 poz with 10% gel and 1/4 cu. ft. fine gilsonite per cu. ft. slurry and tail in with 50 sacks Class "B" cement with 2% Calcium Chloride. WOC 12hours. Run temperature survey after 12 hours.

SGK/ch

NORTHWEST PIPELINE CORPORATION

MULTI - POINT SURFACE USE PLAN

for the

San Juan 30-5 Unit

Well #69

1. Existing Roads: See attached topographic map. All existing roads used, shall be maintained in a serviceable condition at all times during the drilling operation.
2. Planned Access Roads: See attached topographic map. Maximum grade is approximately 1%. The road surface will not exceed twenty feet in width. Upon completion of drilling operations the access road will be adequately drained to control runoff and soil erosion. Drainage facilities may include ditches, water bars, culverts or any other measure deemed necessary. All activities will be confined to the access road and drill pad.
3. Location of Existing Wells: See attached topographic map.
4. Location of Tank Batteries; Production Facilities; and Production, Gathering and Service Lines: See attached topographic map for locations of existing and proposed gas gathering lines.
5. Location and Type of Water Supply: Water needed for the drilling operation will be hauled from the Pine River.
6. Source of Construction Materials: No additional materials will be needed.
7. Methods for Handling Waste Disposal: All garbage, debris, and trash will be buried at least three feet deep. A portable toilet will be supplied for human waste. After drilling operations have been completed the reserve pit will be fenced and the liquid portion will be allowed to evaporate before the location is cleaned up and leveled. The earthen pits will not be located on natural drainages and will be constructed in such a manner so that they will not leak. Any evaporator pit containing toxic liquids will be fenced.
8. Ancillary Facilities: There will be no camps or airstrips associated with the drilling of this well.
9. Well Site Layout: See attached location layout sheet. There will be a drainage ditch above the cut slope.
10. Plans for Restoration of the Surface: Upon completion of drilling, the location will be cleaned, and leveled so that no cut or fill banks will be steeper than 3:1.

All of the area disturbed in connection with the drill site will be seeded as close as possible for any above ground equipment while still allowing for access to the equipment. Seeding will be done within one year after drilling is completed and during the period from July 1 through September 15. Seeding will be done with seed Mixture #1.

All equipment above ground will be painted a non-glare, non-reflective, non-chalking color that simulates the natural color of the site. For this well code number 595-34127, green.

11. Other Information: If, during operations, any historic or prehistoric ruin, monument or site, or any object of antiquity is discovered, then work will be suspended and the discovery will be reported to the District Manager of the BLM.

All liquids from the line will be contained at the site unless otherwise specified by the surface agency's representative.

When drilling with gas, the line used to discharge and burn off the gas will be located so as not to damage vegetation in the area, and if necessary an earthen screen will be constructed to protect the vegetation. All liquids from the line will be contained at the site unless otherwise specified by the surface agency's representative.

The area covered by the location and proposed access road is gently sloped with scattered brush and some grasses.

12. Operator's Representative: S.G. Katirgis, P.O. Box 90 - Farmington, New Mexico 87401. Phone: 327-5351 Extension #107.

13. Certification:

I hereby certify that I have inspected the proposed drillsite and access route; that I am familiar with the conditions which presently exist; that the statements made in this plan are, to the best of my knowledge true and correct; and, that the work associated with the operations proposed herein will be performed by Northwest Pipeline Corporation and its contractors and subcontractors in conformity with this plan and the terms and conditions under which it is approved.

6-11-79

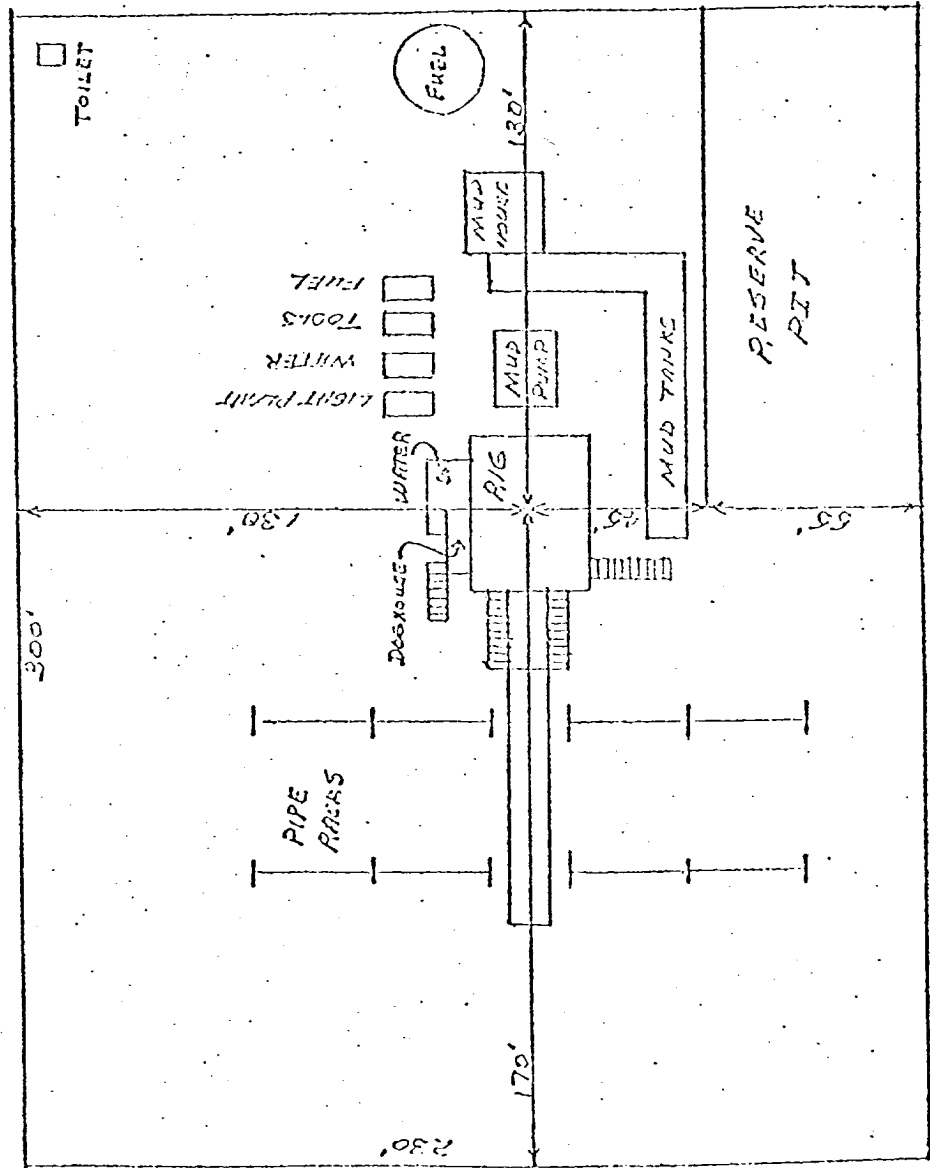
Date

S. Katirgis

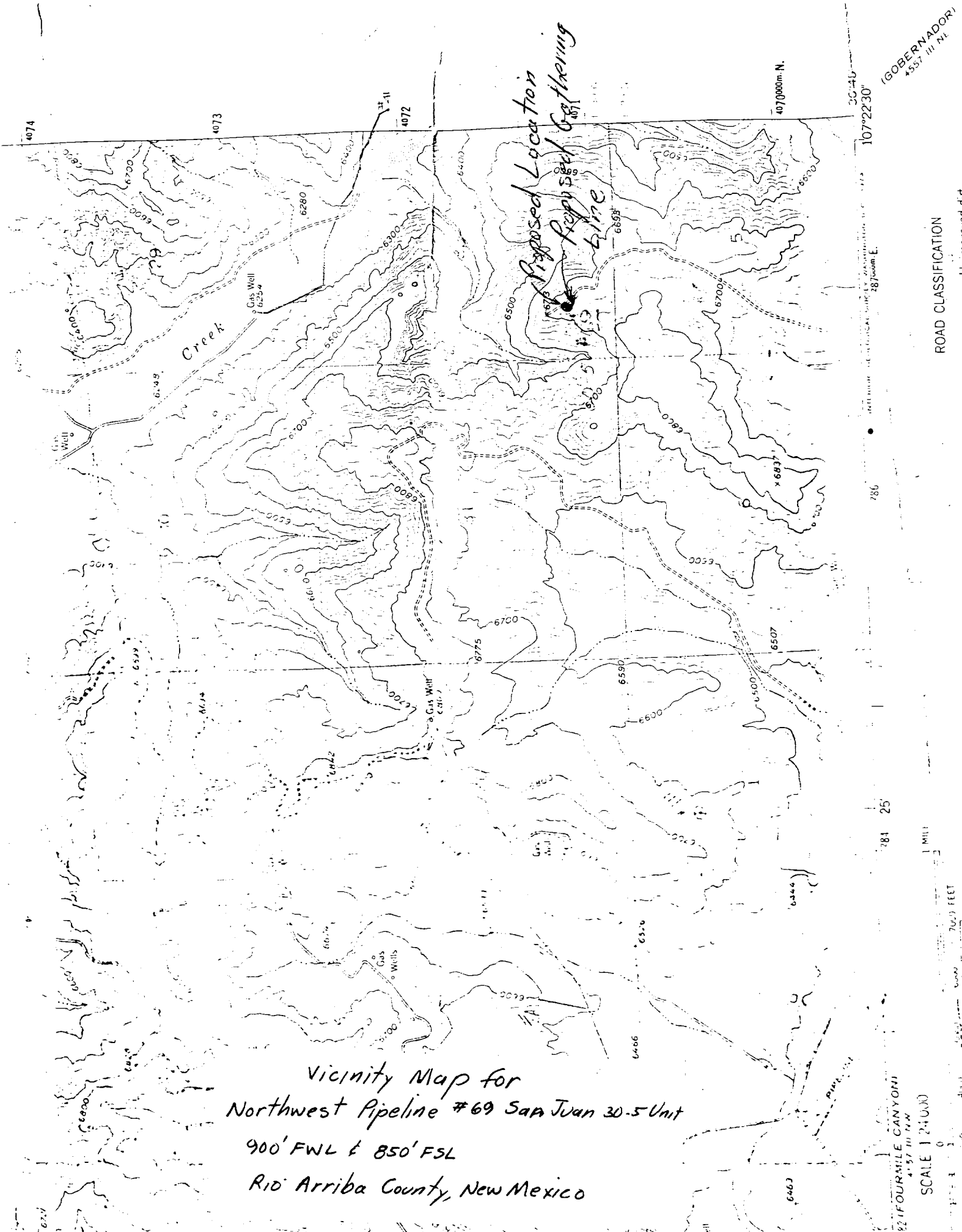
S.G. Katirgis
Production Engineer

SGK/ch

1



DATE: 6-11-79
SCALE: 1cm = 20'



Vicinity Map for
 Northwest Pipeline #69 San Juan 30-5 Unit
 900' FWL & 850' FSL
 Rio Arriba County, New Mexico

GOVERNADOR
 4557 III NE
 ROAD CLASSIFICATION
 Unimproved dirt
 SCALE 1:24,000
 82 FOURMILE CANYON
 4° 57' 11" N
 1 MILE
 700 FEET
 0 100 200 300 400 500 600 700