

UNITED STATES
DEPARTMENT OF THE INTERIOR
GEOLOGICAL SURVEY

30-039-22241

5. LEASE DESIGNATION AND SERIAL NO.

SF 080711-A

6. IF INDIAN, ALLOTTEE OR TRIBE NAME

7. UNIT AGREEMENT NAME

San Juan 30-6 Unit

8. FARM OR LEASE NAME

San Juan 30-6 Unit

9. WELL NO.

57A

10. FIELD AND POOL, OR WILDCAT

Blanco Mesa Verde

11. SEC., T., R., M., OR BLK.
AND SURVEY OR AREASec. 30 T-30-N, R-6-W
NMPM

12. COUNTY OR PARISH

Rio Arriba NM

13. STATE

17. NO. OF ACRES ASSIGNED
TO THIS WELL

W 320.00

20. ROTARY OR CABLE TOOLS

Rotary

22. APPROX. DATE WORK WILL START*

1a. TYPE OF WORK

DRILL ☒DEEPEN ☐PLUG BACK ☐

b. TYPE OF WELL

OIL
WELL ☐GAS
WELL ☒

OTHER

SINGLE
ZONE ☒MULTIPLE
ZONE ☐

2. NAME OF OPERATOR

El Paso Natural Gas Company

3. ADDRESS OF OPERATOR

PO Box 289, Farmington, NM 87401

4. LOCATION OF WELL (Report location clearly and in accordance with any State requirements.)*

At surface

790'N, 1640'W

At proposed prod. zone

same

14. DISTANCE IN MILES AND DIRECTION FROM NEAREST TOWN OR POST OFFICE*

8 miles north of Gobernador, NM

15. DISTANCE FROM PROPOSED*

LOCATION TO NEAREST
PROPERTY OR LEASE LINE, FT.
(Also to nearest drig. unit line, if any)

790'

16. NO. OF ACRES IN LEASE

unit

18. DISTANCE FROM PROPOSED LOCATION*
TO NEAREST WELL, DRILLING, COMPLETED,
OR APPLIED FOR, ON THIS LEASE, FT.

1/3 mile

19. PROPOSED DEPTH

5835'

21. ELEVATIONS (Show whether DF, RT, GR, etc.)

6251'GL

23.

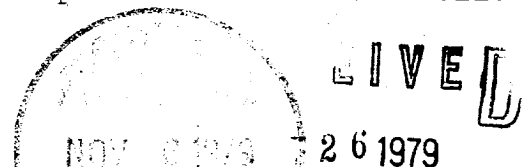
PROPOSED CASING AND CEMENTING PROGRAM

SIZE OF HOLE	SIZE OF CASING	WEIGHT PER FOOT	SETTING DEPTH	QUANTITY OF CEMENT
13 3/4"	9 5/8"	36.0#	200'	224 cu.ft. to circulate
8 3/4"	7"	20.0#	3575'	322 cu.ft. to cover Ojo Alam
6 1/4"	4 1/2" liner	10.5#	3425-5835'	420 cu.ft. to circ. liner

Selectively perforate and sandwater fracture the Mesa Verde formation.

A 3000 psi WP and 6000 psi test double gate preventer equipped with
blind and pipe rams will be used for blow out prevention on this well.

This gas is dedicated.



The W/2 of Section 30 is dedicated to this well.

IN ABOVE SPACE DESCRIBE PROPOSED PROGRAM: If proposal is to deepen or plug back, give data on present productive zone and proposed new productive zone. If proposal is to drill or deepen directionally, give pertinent data on subsurface locations and measured and true vertical depths. Give blowout preventer program, if any.

24.

SIGNED

N. G. Busco

TITLE

Drilling Clerk

DATE

10-18-79

(This space for Federal or State office use)

PERMIT NO.

APPROVAL DATE

APPROVED BY

TITLE

DATE

CONDITIONS OF APPROVAL, IF ANY:

ok Frank

*See Instructions On Reverse Side

All distances must be from the outer boundaries of the Section.

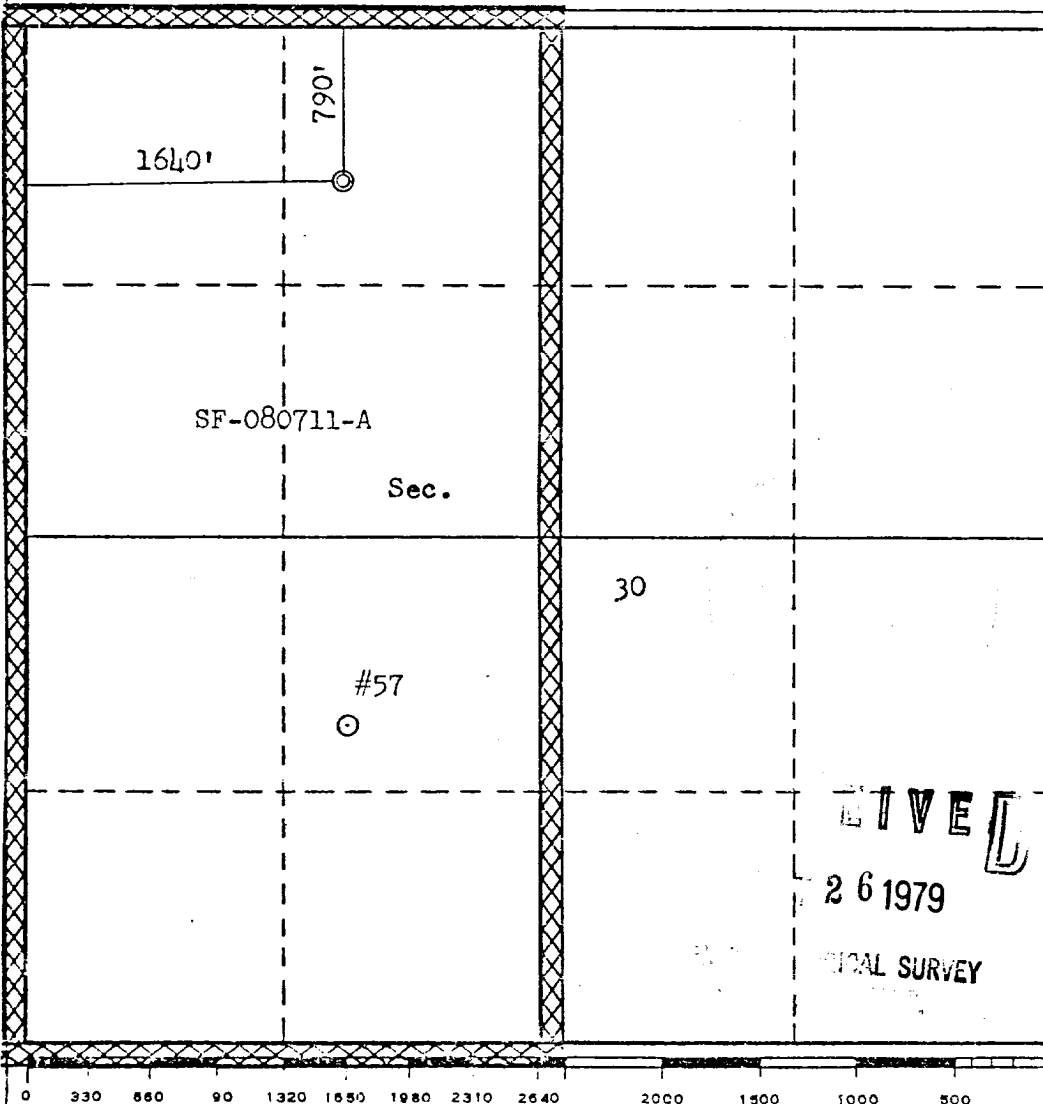
Operator EL PASO NATURAL GAS COMPANY			Lease SAN JUAN 30-6 UNIT (SF-080711-A)		Well No. 57A
Unit Letter C	Section 30	Township 30N	Range 6W	County Rio Arriba	
Actual Footage Location of Well: 790 feet from the North line and 1640 feet from the West line					
Ground Level Elev. 6251	Producing Formation Mesa Verde		Pool Blanco Mesa Verde	Dedicated Acreage: 320.00 Acres	

1. Outline the acreage dedicated to the subject well by colored pencil or hachure marks on the plat below.
2. If more than one lease is dedicated to the well, outline each and identify the ownership thereof (both as to working interest and royalty).
3. If more than one lease of different ownership is dedicated to the well, have the interests of all owners been consolidated by communitization, unitization, force-pooling, etc?

☒ Yes ☐ No If answer is "yes," type of consolidation Unitization

If answer is "no," list the owners and tract descriptions which have actually been consolidated. (Use reverse side of this form if necessary.)

No allowable will be assigned to the well until all interests have been consolidated (by communitization, unitization, forced-pooling, or otherwise) or until a non-standard unit, eliminating such interests, has been approved by the Commission.



CERTIFICATION	
I hereby certify that the information contained herein is true and complete to the best of my knowledge and belief.	
<i>D. G. Sisco</i>	
Name	
Position	Drilling Clerk
Company	El Paso Natural Gas Co.
Date	October 18, 1979
I hereby certify that the well location shown on this plat was plotted from field notes of actual surveys made by me or under my supervision, and that the same is true and correct to the best of my knowledge and belief.	
Date Surveyed	July 27, 1979
Registered Professional Engineer and/or Land Surveyor	<i>Fred B. Kerr Jr.</i>
Certificate No.	3950

Multi-Point Surface Use Plan

San Juan 30-6 Unit #57A

1. Existing Road - Please refer to Map No. 1 which shows the existing roads. New roads which will be required have been marked on this map. All existing and new roads will be properly maintained during the duration of this project.
2. Planned Access Roads - Please refer to Map No. 1. The grade of the access roads will be consistent with that of the local terrain. The road surface will not exceed twenty feet (20') in width. Upon completion of the project, the access road will be adequately drained to control soil erosion. Drainage facilities may include ditches, water bars, culverts or any other measure deemed necessary by trained Company personnel to insure proper drainage. Gates and/or cattleguards will be installed if necessary.
3. Location of Existing Wells - Please refer to Map No. 2.
4. Location of Tank Batteries, Production Facilities, and Production Gathering and Service Lines - Please refer to Maps No. 1 and No. 2. Map No. 2 shows the existing gas gathering lines. Map No. 1 shows the existing roads and new proposed access roads. All known production facilities are shown on these two maps.
5. Location and Type of Water Supply - Water for the proposed project will be obtained from 30-6 Water Well or Frances Creek.
6. Source of Construction Materials - No additional materials will be required to build either the access road or the proposed location.
7. Methods of Handling Waste Materials - All garbage and trash materials will be put into a burn pit shown on the attached Location Plat No. 1. When clean-up operations are begun on the proposed project, the burn pit with its refuse will be buried to a depth of at least three feet (3'). A latrine, the location of which is also shown on Plat No. 1,

LIVE

7-2-1979

LOCAL SURVEY

LIVE

7 26 1979

ICAL SURVEY

October 18, 1979

Operations Plan
San Juan 30-6 Unit #57A

I. Location: 790'N, 1640'W, Section 30, T-30-N, R-6-W, Rio Arriba County, NM

Field: Blanco Mesa Verde

Elevation: 6261'GR

II. Geology:

A. Formation Tops:	Surface	San Jose	Lewis	3375'
	Ojo Alamo	2148'	Mesa Verde	4989'
	Kirtland	2365'	Menefee	5078'
	Fruitland	2826'	Point Lookout	5386'
	Pic.Cliffs	3197'	Total Depth	5835'

B. Logging Program: GR-Ind. and GR-Density at Total Depth.

C. Coring Program: none

D. Natural Gauges: 4980', 5070', 5375' and at Total Depth.
Also gauge any noticeable increase in gas. Record all gauges in daily drilling report and on morning report.

III. Drilling:

A. Mud Program: mud from surface to 3575'. Gas from intermediate casing to Total Depth.

IV. Materials:

A. Casing Program:	Hole Size	Depth	Casing Size	Wt.&Grade
	13 3/4"	200'	9 5/8"	36.0# K-55
	8 3/4"	3575'	7"	20.0# K-55
	6 1/4"	3425-5835'	4 1/2"	10.5# K-55

B. Float Equipment: 9 5/8" surface casing - cement guide shoe.

7" intermediate casing - cement guide shoe and self-fill insert float valve, 5 stabilizers every other joint above shoe. Run float two joints above shoe.

4 1/2" liner - 4 1/2" liner hanger with neoprene packoff.
Geyser shoe and flapper type float collar

C. Tubing: 5835' of 2 3/8", 4.7#, J-55 8rd EUE tubing with a common pump seating nipple one joint above bottom. Tubing will be open ended.

D. Wellhead Equipment: 10" 2000 x 9 5/8" casing head. 10" 2000 x 6" 2000 xmas tree.

LIVE

26 1979

LOCAL SURVEY

Operations Plan - San Juan 30-6 Unit #57A

V. Cementing:

9 5/8" surface casing - use 190 sks. of Class "B" cement with 1/4# gel-flake per sack and 3% calcium chloride (224 cu.ft. of slurry, 100% excess to circulate to surface). WOC 12 hours. Test casing to 600#/30 minutes.

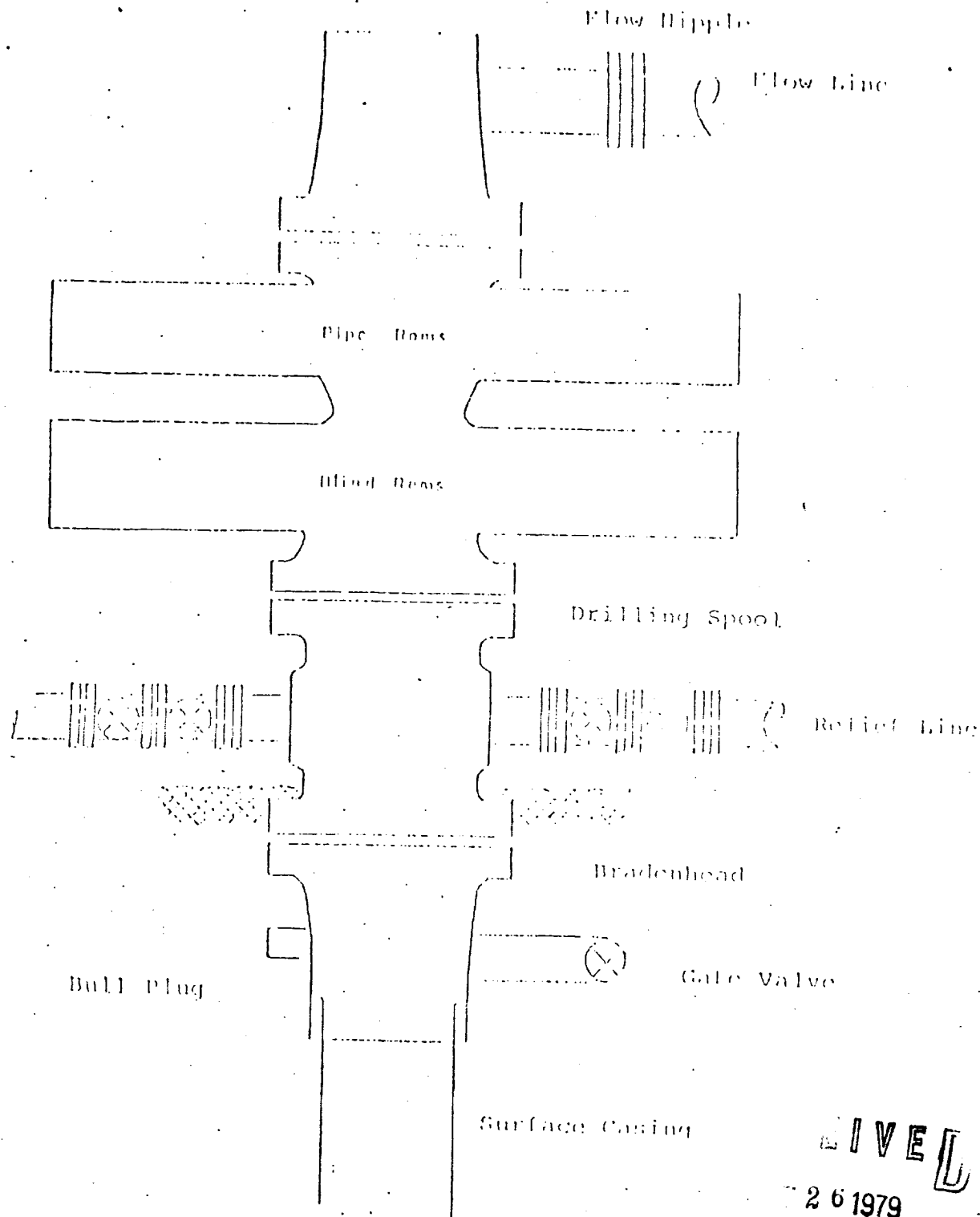
7" intermediate casing - use 126 sks. of 65/35 Class "B" Poz with 6% gel and 2% calcium chloride (8.3 gallons of water per sack) followed by 100 sks. of Class "B" with 2% calcium chloride (322 cu.ft. of slurry, 50% excess to cover Ojo Alamo). Run temperature survey at 8 hours. WOC 12 hours. Test casing to 1200#/30 minutes.

4 1/2" liner - precede cement with 20 barrels of gel water (2 sks. gel) Cement with 303 sks. of 50/50 Class "B" Poz with 2% gel, 0.6% Haiad-9, 6.25# gilsonite plus 1/4# Flocele per sack (420 cu.ft. of slurry, 70% excess to circulate liner). WOC 18 hours.

LIVE

26 1979

LOGICAL SURVEY

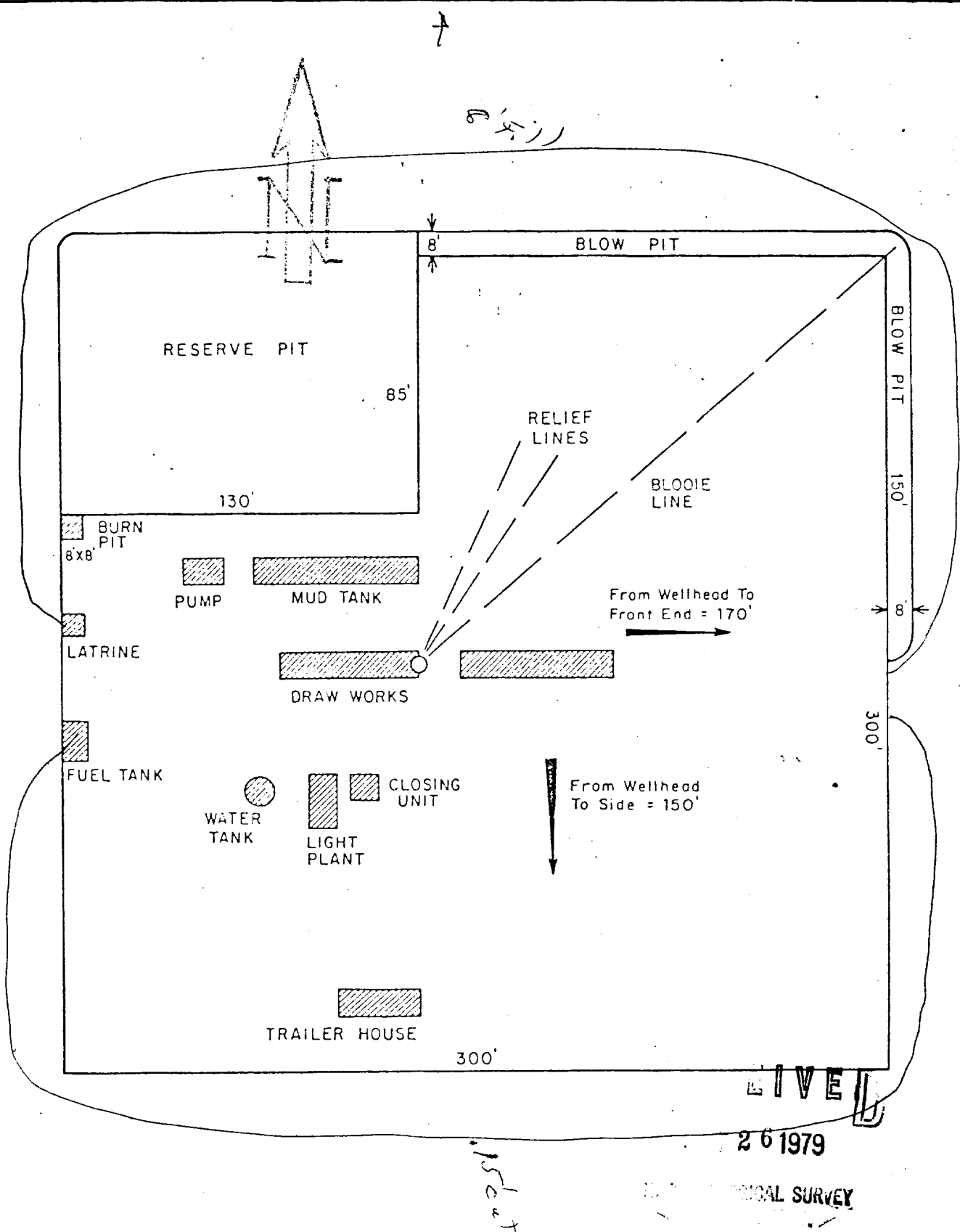


Series 900 Double Gate BOP, rated
at 3000 psi Working Pressure
When gas drilling operations begin a Shaffer type 50
or equivalent rotating head is installed on top of the
flow nipple and the flow line is converted into a blowie line


LIVED

26 1979

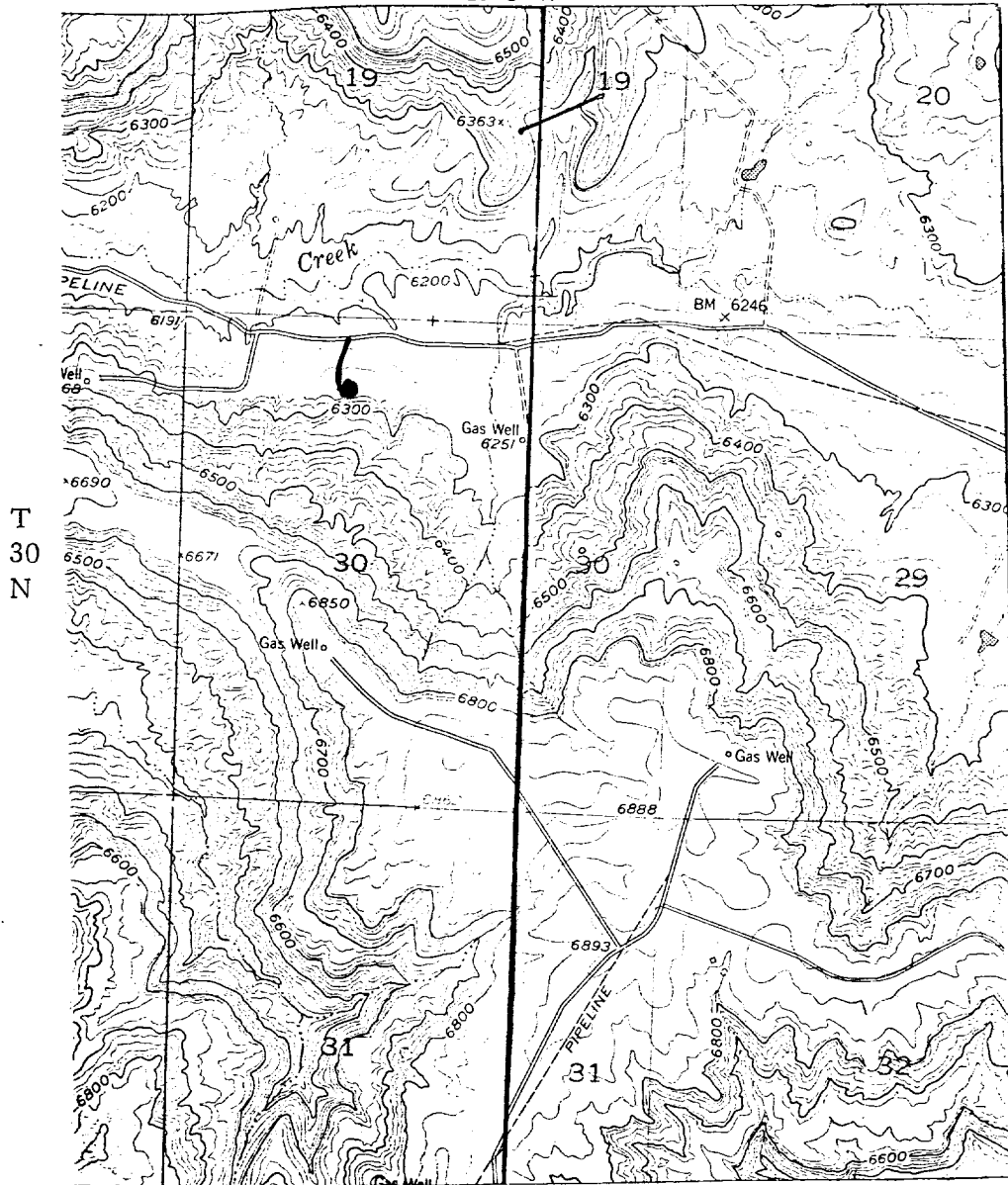
LOCAL SURVEY



PRT.	SEP.	DATE	TO	W.O.	ENG. REC.	DATE
					DRAWN	J.L.H. 8-16-78
					CHECKED	
					CHECKED	
					PROJ. APP.	
					DESIGN	

 **El Paso Natural Gas Company**
TYPICAL LOCATION PLAT FOR
MESAVERDE OR DAKOTA DRILL SITE
 SCALE: 1" = 50' DWG. NO. R

R-6-W



EXISTING ROADS
EXISTING PIPELINES
EXISTING ROAD & PIPELINE
PROPOSED ROADS
PROPOSED PIPELINES
PROPOSED ROAD & PIPELINE

FIVE

26 1979

PHYSICAL SURVEY

El Paso Natural Gas Company
 San Juan 30-6 Unit #57A
 NW 30-31-6

R-6-W

T
 30
 N

