

UNITED STATES  
DEPARTMENT OF THE INTERIOR  
GEOLOGICAL SURVEY

SUNDRY NOTICES AND REPORTS ON WELLS

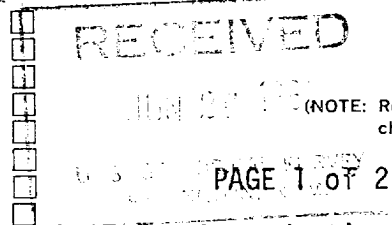
(Do not use this form for proposals to drill or to deepen or plug back to a different reservoir. Use Form 9-331-C for such proposals.)

1. oil ☐ well gas ☒ well other ☐
2. NAME OF OPERATOR  
Northwest Pipeline Corporation
3. ADDRESS OF OPERATOR  
P.O. Box 90, Farmington, N.M. 87401
4. LOCATION OF WELL (REPORT LOCATION CLEARLY. See space 17 below.)  
AT SURFACE: 1780' FNL & 790' FWL  
AT TOP PROD. INTERVAL: Same as above  
AT TOTAL DEPTH: Same as above
16. CHECK APPROPRIATE BOX TO INDICATE NATURE OF NOTICE, REPORT, OR OTHER DATA

REQUEST FOR APPROVAL TO:

- TEST WATER SHUT-OFF ☐  
FRACTURE TREAT ☐  
SHOOT OR ACIDIZE ☐  
REPAIR WELL ☐  
PULL OR ALTER CASING ☐  
MULTIPLE COMPLETE ☐  
CHANGE ZONES ☐  
ABANDON\* ☐  
(other) ☐

SUBSEQUENT REPORT OF:



(NOTE: Report results of multiple completion or zone change on Form 9-330C)

JUL 2 1981  
OIL CON. COM.  
DIST. 3

17. DESCRIBE PROPOSED OR COMPLETED OPERATIONS (Clearly state all pertinent details, and give pertinent dates, including estimated date of starting any proposed work. If well is directionally drilled, give subsurface locations and measured and true vertical depths for all markers and zones pertinent to this work.)\*

6-5-81 MOL & RU. Spudded 12-1/4" surface hole @ 1500 hrs. Ran 5 jts (201') of 9-5/8", 36#, K-55, ST&C & set @ 215' KB. Woodco cmt'd w/ 140 sx Cl "B" w/ 1/4# Flo-cele/sx & 3% CaCl<sub>2</sub>. Circ 10 bbls of cmt. Plug down @ 2300 hrs.

6-6-81 to 6-7-81 Drlg ahead to a depth of 3750' with benex & wtr.

6-8-81 Ran 94 jts (3736') of 7", 20#, K-55, ST&C Armco & Pittsburgh seamless & set @ 3750' KB. Dowell cmt'd w/ 100 sx Cl "B" 65/35 poz w/ 12% gel. Tailed w/ 75 sx Cl "B" w/ 2% CaCl<sub>2</sub>. Displaced plug w/ 151.5 bbls wtr & down @ 2245 hrs. Did not circulate behind 7" csg. Calculated top of cmt at 2635'.

Subsurface Safety Valve: Manu. and Type \_\_\_\_\_ Set @ \_\_\_\_\_ Ft.

18. I hereby certify that the foregoing is true and correct

SIGNED Donna J. Brace TITLE Production Clerk DATE 6-24-81  
Donna J. Brace

(This space for Federal or State office use)

APPROVED BY \_\_\_\_\_ TITLE NMOCC DATE ACCEPTED FOR RECORD  
CONDITIONS OF APPROVAL, IF ANY:

djb/

\*See Instructions on Reverse Side

JUL 01 1981  
BY Donna J. Brace