

NO. OF COPIES RECEIVED	
DISTRIBUTION	
SANTA FE	
FILE	
U.S.G.S.	
LAND OFFICE	
OPERATOR	

# NEW MEXICO OIL CONSERVATION COMMISSION

30-039-22786

Form C-101  
Revised 1-1-65

5A. Indicate Type of Lease	
STATE <input type="checkbox"/>	FEE <input checked="" type="checkbox"/>
5. State Oil & Gas Lease No.	

## APPLICATION FOR PERMIT TO DRILL, DEEPEN, OR PLUG BACK

1a. Type of Work		7. Unit Agreement Name	
b. Type of Well OIL WELL <input type="checkbox"/> GAS WELL <input checked="" type="checkbox"/> OTHER <input type="checkbox"/>		8. Farm or Lease Name Bixler Ranch	
2. Name of Operator Southland Royalty Company		9. Well No. 1	
3. Address of Operator P. O. Drawer 570, Farmington, New Mexico 87401		10. Field and Pool, or Wildcat Blanco Pictured Cliffs Ext	
4. Location of Well UNIT LETTER E LOCATED 1790 FEET FROM THE North LINE AND 900 FEET FROM THE West LINE OF SEC. 26 TWP. 30N RGE. 4W NMPM		12. County Rio Arriba	
19. Proposed Depth 4310'		19A. Formation Pictured Cliffs	
20. Rotary or C.T. Rotary		21. Elevations (Show whether DF, RT, etc.) 7277' GL	
21A. Kind & Status Plug. Bond		21B. Drilling Contractor Four Corners Drilling	
22. Approx. Date Work will start August 21, 1981			

### PROPOSED CASING AND CEMENT PROGRAM

SIZE OF HOLE	SIZE OF CASING	WEIGHT PER FOOT	SETTING DEPTH	SACKS OF CEMENT	EST. TOP
12-1/4"	8-5/8"	24#	300'	248 cu.ft. (circ to surface)	
7-7/8"	4-1/2"	10.5#	4310'	348 cu.ft. (Lead)	
				59 cu.ft. (Tail - cover Ojo Alamo)	

Surface formation is San Jose.

Top of Ojo Alamo sand is at 3405'.

Top of Pictured Cliffs sand is at 3972'.

Fresh water mud will be used to drill from surface to total depth.

It is anticipated that an IES and GR-Density will be run from total depth to surface casing.

No abnormal pressures or poisonous gases are anticipated in this well.

It is expected that this well will be drilled before October 31, 1981.

This depends on time required for approvals, rig availability and the weather.

Gas is not dedicated.

APPROVAL VALID  
FOR 30 DAYS UNLESS  
DRILLING COMMENCED,

EXPIRES 2-5-82

IN ABOVE SPACE DESCRIBE PROPOSED PROGRAM: IF PROPOSAL IS TO DEEPEN OR PLUG BACK, GIVE DATA ON PRESENT PRODUCTIVE ZONE AND PROPOSED NEW PRODUCTIVE ZONE. GIVE BLOWOUT PREVENTER PROGRAM, IF ANY.

I hereby certify that the information above is true and complete to the best of my knowledge and belief.

Signed R. E. Fielder Title District Engineer

Date August 4, 1981

(This space for State Use)  
Frank T. Gray

SUPERVISOR DISTRICT # 3

APPROVED BY  
CONDITIONS OF APPROVAL, IF ANY:

DATE AUG 5 - 1981



## OIL CONSERVATION DIVISION

P. O. BOX 2088

Form C-102  
Revised 10-1-78STATE OF NEW MEXICO  
ENERGY AND MINERALS DEPARTMENT

SANTA FE, NEW MEXICO 87501

All distances must be from the outer boundaries of the Section.

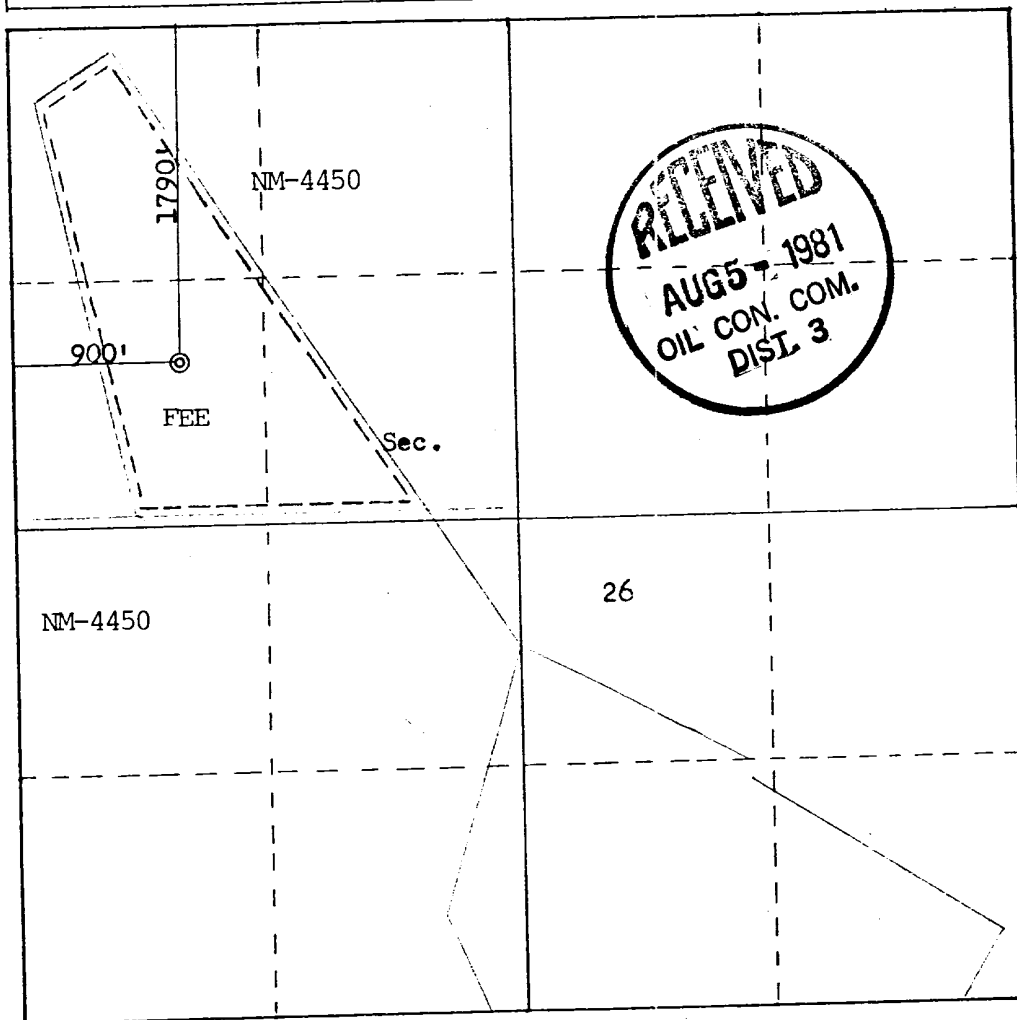
Operator <b>SOUTHLAND ROYALTY COMPANY</b>			Lease <b>BIXLER RANCH</b>		Well No. <b>1</b>
Unit Letter <b>E</b>	Section <b>26</b>	Township <b>30N</b>	Range <b>4W</b>	County <b>Rio Arriba</b>	
Actual Footage Location of Well: <b>1790</b> feet from the <b>North</b> line and <b>900</b> feet from the <b>West</b> line					
Ground Level Elev. <b>7277</b>	Producing Formation <b>Pictured Cliffs Ext.</b>		Pool <b>Blanco</b>	Dedicated Acreage: <b>160</b> Acres	

1. Outline the acreage dedicated to the subject well by colored pencil or hachure marks on the plat below.
2. If more than one lease is dedicated to the well, outline each and identify the ownership thereof (both as to working interest and royalty).
3. If more than one lease of different ownership is dedicated to the well, have the interests of all owners been consolidated by communitization, unitization, force-pooling, etc?

☒ Yes ☐ No If answer is "yes," type of consolidation Communitization

If answer is "no," list the owners and tract descriptions which have actually been consolidated. (Use reverse side of this form if necessary.) \_\_\_\_\_

No allowable will be assigned to the well until all interests have been consolidated (by communitization, unitization, forced-pooling, or otherwise) or until a non-standard unit, eliminating such interests, has been approved by the Commission.



Scale: 1"=1000'

## CERTIFICATION

I hereby certify that the information contained herein is true and complete to the best of my knowledge and belief.

*R. E. Fielder*  
Name

R. E. Fielder  
Position

District Engineer  
Company

Southland Royalty Company  
Date

7-15-81

I hereby certify that the well location shown on this plat was plotted from field notes of actual surveys made by me or under my supervision, and that the same is true and correct to the best of my knowledge and belief.

Date Surveyed  
May 28, 1981  
Registered Professional Engineer  
and Land Surveyor

*Fred B. Kerr Jr.*  
Fred B. Kerr Jr.

Certificate No. 3950  
KERR, JR.

SOUTHLAND ROYALTY COMPANY - DRILLING SCHEDULE

BIXLER RANCH #1

1790' FNL & 900' FWL  
Section 26, T30N, R4W  
Rio Arriba County, New Mexico

Field: Blanco Pictured Cliffs Extension

Elevation: 7277' GL

Geology:

Formation Tops:	Ojo Alamo	3405'
	Fruitland	3655'
	Pictured Cliffs	3972'
	Total Depth	4310'

Logging Program: IES and GR-Density from Total Depth to surface casing.

Drilling:

Contractor:

Tool Pusher:

SRC Representative:

SRC Answering Service: 325-1841  
Dispatch Number: 325-7391

Mud Program: Fresh water mud from surface to Total Depth.

Materials:

Casing Program:	<u>Hole Size</u>	<u>Depth Set</u>	<u>Casing Size</u>	<u>Weight &amp; Grade</u>
	12-1/4"	300'	8-5/8"	24# H-40
	7-7/8"	4310'	4-1/2"	10.5# K-55

Float Equipment:

8-5/8" Surface Casing: B&W FC01 Guide Shoe.

5-1/2" Production Casing: B&W FC01 Guide shoe, and self-fill float collar one joint up with 5 standard centralizers every other joint above shoe.

Wellhead Equipment: 8-5/8" X 10", 2000# casing head  
10", 2000# X 6", 2000# tubing head and tree.

Cement Program:

8-5/8" Surface Casing: 210 sacks (248 cu.ft.) of Class "B" with 1/4# gel flake per sack and 3% CaCl<sub>2</sub>. WOC 12 hours. Test to 600 psi prior to drilling out. (Cement volume is 100% excess to circulate.)

5-1/2" Production Casing: LEAD  
235 sacks (348 cu.ft.) of Class "B" 50/50 poz with 6% gel added.

TAIL  
50 sacks (59 cu.ft.) of Class "B" neat.  
(Volume is 70% excess to cover Ojo Alamo.)

Displace plug with 250 gals 7-1/2% acetic acid before flush.

---

L. O. Van Ryan  
District Production Manager

JWC/eg

Date: \_\_\_\_\_



**Southland Royalty Company**

August 4, 1981

Oil Conservation Division  
Mr. Frank Chavez  
1000 Rio Brazos Road  
Aztec, New Mexico 87410

RE: Blowout Preventer Plan

Dear Mr. Chavez:

All drilling and completion rigs will be equipped with 6" or larger double gate hydraulic blowout preventers and a hydraulic operated closing unit with steel lines.

The preventer is 3000# working pressure and 6000# test pressure.

All crews will be thoroughly trained in the operation of this preventer. The preventer will be tested frequently enough to ensure proper operation.

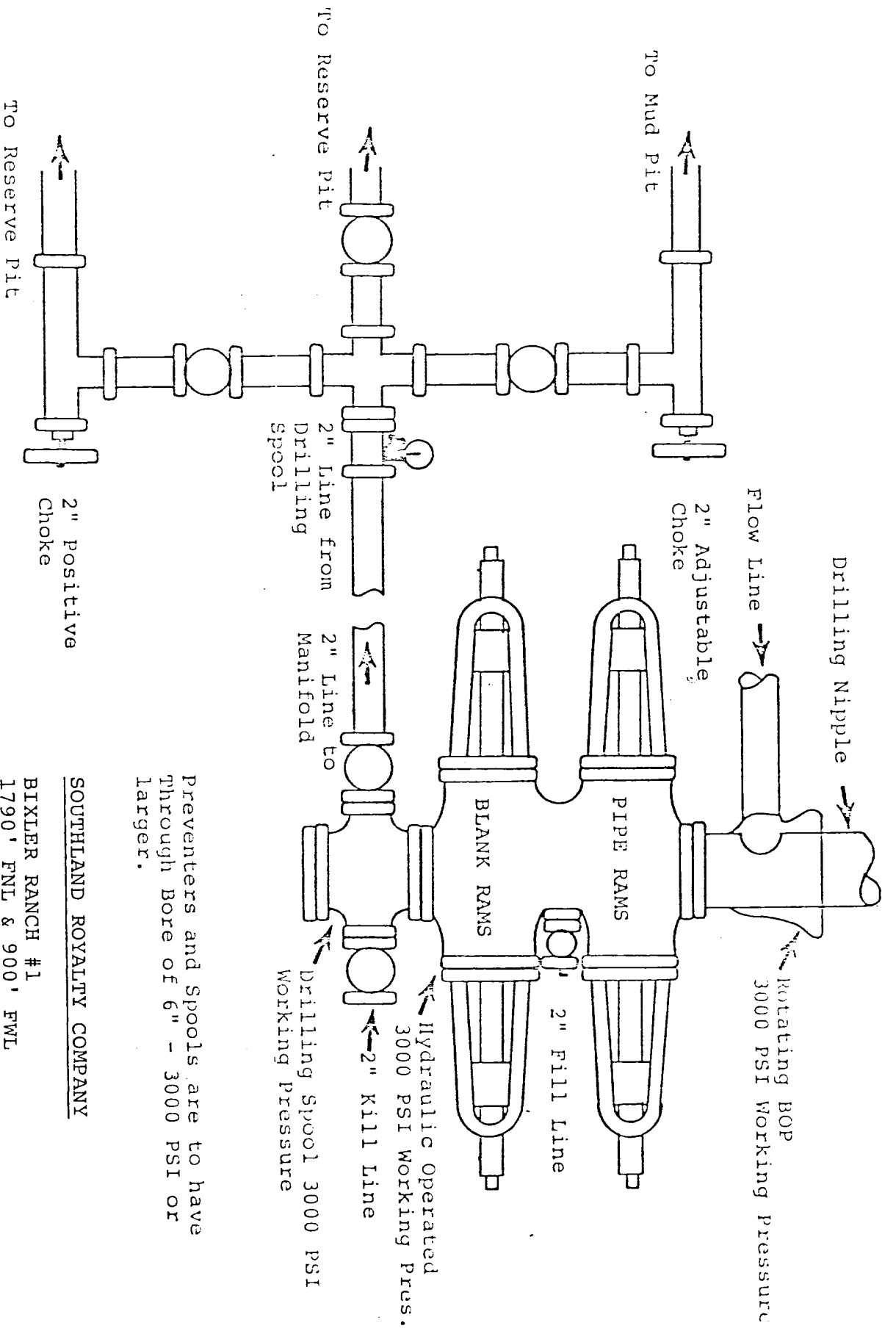
Sincerely,

SOUTHLAND ROYALTY COMPANY

A handwritten signature in cursive script, reading "R. E. Fielder".

R. E. Fielder  
District Engineer

REF/eg

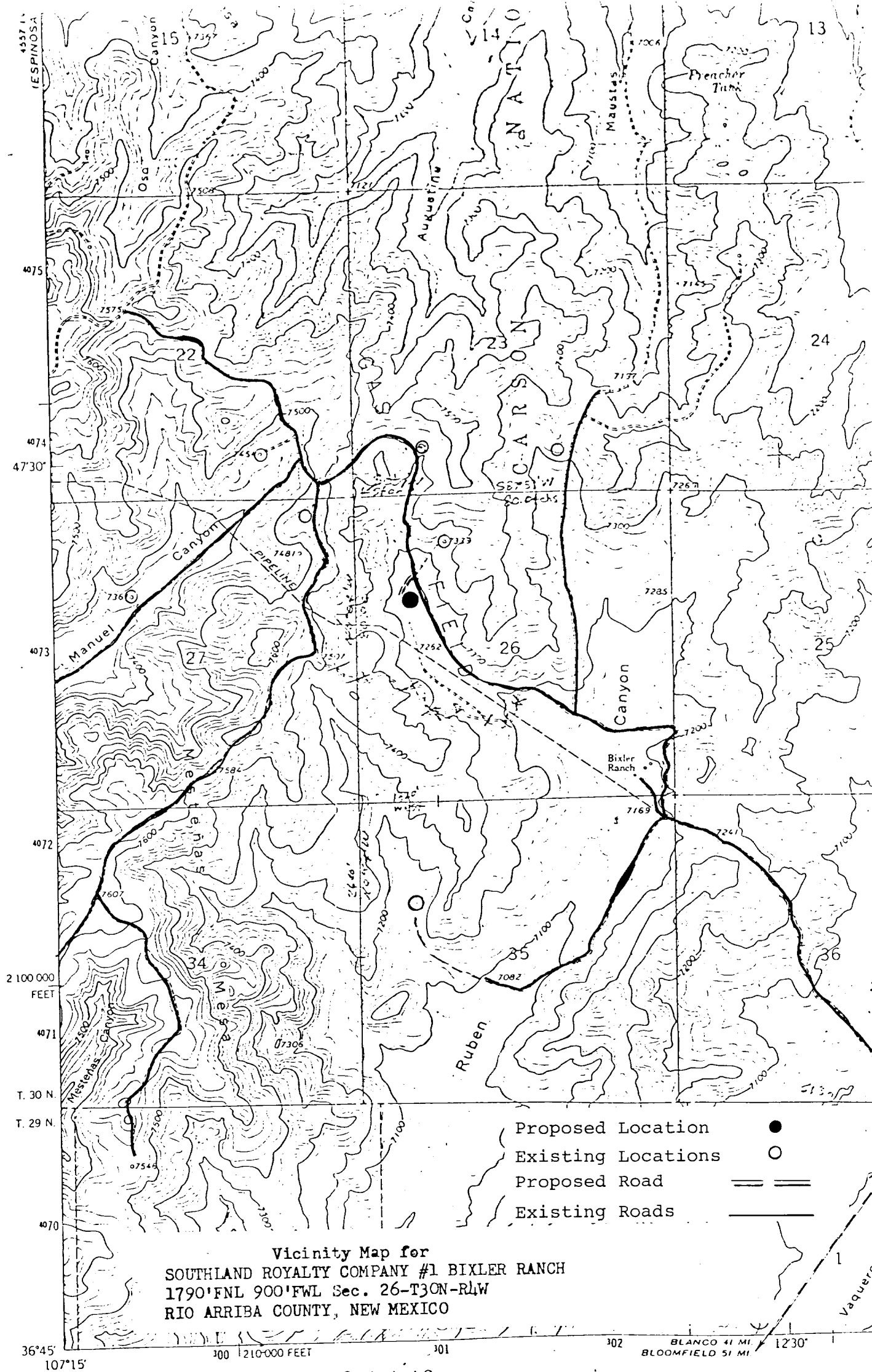


Preventers and Spools are to have Through Bore of 6" - 3000 PSI or larger.

SOUTHLAND ROYALTY COMPANY

BIXLER RANCH #1  
 1790' FNL & 900' FWL  
 Section 26, T30N, R4W  
 Rio Arriba County, New Mexico





Vicinity Map for  
 SOUTHLAND ROYALTY COMPANY #1 BIXLER RANCH  
 1790'FNL 900'FWL Sec. 26-T30N-R4W  
 RIO ARRIBA COUNTY, NEW MEXICO

- Proposed Location ●
- Existing Locations ○
- Proposed Road ==
- Existing Roads —

Mapped, edited, and published by the Geological Survey

Control by USGS and USC&GS

Topography by photogrammetric methods from aerial photographs taken 1958 and 1962. Field checked 1963

Polyconic projection. 1927 North American datum  
 10,000 foot grid based on New Mexico coordinate system, central zone  
 1000-meter Universal Transverse Mercator grid ticks,  
 zone 13, shown in blue

Fine red dashed lines indicate selected fence lines

