

UNITED STATES
DEPARTMENT OF THE INTERIOR
GEOLOGICAL SURVEY

30-039-23145

APPLICATION FOR PERMIT TO DRILL, DEEPEN, OR PLUG BACK

1a. TYPE OF WORK

DRILL ☒DEEPEN ☐PLUG BACK ☐

b. TYPE OF WELL

OIL
WELL ☐GAS
WELL ☒OTHER ☐SINGLE
ZONE ☒MULTIPLE
ZONE ☐

2. NAME OF OPERATOR

Northwest Pipeline Corporation

3. ADDRESS OF OPERATOR

P.O. Box 90, Farmington, New Mexico 87499

4. LOCATION OF WELL (Report location clearly and in accordance with any State requirements.)

At surface

1820 FSL & 1710 FWL NE/SW

At proposed prod. zone

1820 FSL & 1710 FWL

14. DISTANCE IN MILES AND DIRECTION FROM NEAREST TOWN OR POST OFFICE*

20 Miles East of Navajo Dam Post Office

15. DISTANCE FROM PROPOSED*

LOCATION TO NEAREST
PROPERTY OR LEASE LINE, FT.
(Also to nearest drilg. unit line, if any)

930

18. DISTANCE FROM PROPOSED LOCATION*

TO NEAREST WELL, DRILLING, COMPLETED,
OR APPLIED FOR, ON THIS LEASE, FT.

900

16. NO. OF ACRES IN LEASE

N/A

19. PROPOSED DEPTH

7950

17. NO. OF ACRES ASSIGNED

TO THIS WELL

S 320

20. ROTARY OR CABLE TOOLS

Rotary

21. ELEVATIONS (Show whether DF, RT, GR, etc.)

6569' GR

22. APPROX. DATE WORK WILL START*

December 1982

23.

PROPOSED CASING AND CEMENTING PROGRAM

SIZE OF HOLE	SIZE OF CASING	WEIGHT PER FOOT	SETTING DEPTH	QUANTITY OF CEMENT
12-1/4"	9-5/8"	32.3#	350'	220 cu.ft
8-3/4"	7"	20#	3655'	265 cu.ft
6-1/4"	4-1/2"	10.5# & 11.6#	7950'	675 cu.ft

Selectively perforate and stimulate the Dakota Formation. Completion plans will be determined at Total Depth.

A BOP will be installed after the surface casing is set and cemented. All subsequent work will be conducted through the BOP's.

The West half of Section 26 is dedicated to this well.

Gas is dedicated.

IN ABOVE SPACE DESCRIBE PROPOSED PROGRAM: If proposal is to deepen or plug back, give data on present productive zone and proposed new productive zone. If proposal is to drill or deepen directionally, give pertinent data on subsurface locations and measured and true vertical depths. Give blowout prevention program, if any.

24.

SIGNED

Paul C. Thompson
Paul C. Thompson

TITLE

Drilling Engineer

DATE

November 23, 1982

(This space for Federal or State office use)

PERMIT NO.

APPROVAL DATE

APPROVED BY

CONDITIONS OF APPROVAL, IF ANY:

TITLE

DRILLING OPERATIONS AUTHORIZED ARE
SUBJECT TO COMPLIANCE WITH ATTACHED

FORM 900, REV. 6-75

PCT:djb

This action is subject to administrative
appeal pursuant to 30 CFR 290.

*See Instructions On Reverse Side

NMOCC

APPROVED
AS AMENDED

JAN 29 1983

James F. Sims
JAMES F. SIMS
DISTRICT ENGINEER

OIL CONSERVATION DIVISION

P. O. BOX 2088
SANTA FE, NEW MEXICO 87501

All distances must be from the outer boundaries of the Section.

Operator NORTHWEST PIPELINE CORPORATION			Lease SAN JUAN 30-5 UNIT		Well No. 92
Unit Letter K	Section 26	Township 30N	Range 5W	County Rio Arriba	
Actual Footage Location of Well: 1820 feet from the South line and 1710 feet from the West line					
Ground Level Elev. 6569	Producing Formation Dakota		Pool Basin Dakota		Dedicated Acreage: 320 Acres

1. Outline the acreage dedicated to the subject well by colored pencil or hachure marks on the plat below.
2. If more than one lease is dedicated to the well, outline each and identify the ownership thereof (both as to working interest and royalty).
3. If more than one lease of different ownership is dedicated to the well, have the interests of all owners been consolidated by communitization, unitization, force-pooling, etc?

☒ Yes ☐ No If answer is "yes," type of consolidation Unitization

If answer is "no," list the owners and tract descriptions which have actually been consolidated. (Use reverse side of this form if necessary.)

No allowable will be assigned to the well until all interests have been consolidated (by communitization, unitization, forced-pooling, or otherwise) or until a non-standard unit, eliminating such interests, has been approved by the Commission.

		<p>RECEIVED</p> <p>OIL CONSERVATION DIV.</p> <p>DEC. 3</p>	
		<p>Sec.</p>	
<p>1710'</p>		<p>26</p>	
<p>1820'</p>			

CERTIFICATION

I hereby certify that the information contained herein is true and complete to the best of my knowledge and belief.

Paul C. Thompson

Name
Paul C. Thompson

Position
Drilling Engineer

Company
Northwest Pipeline Corp

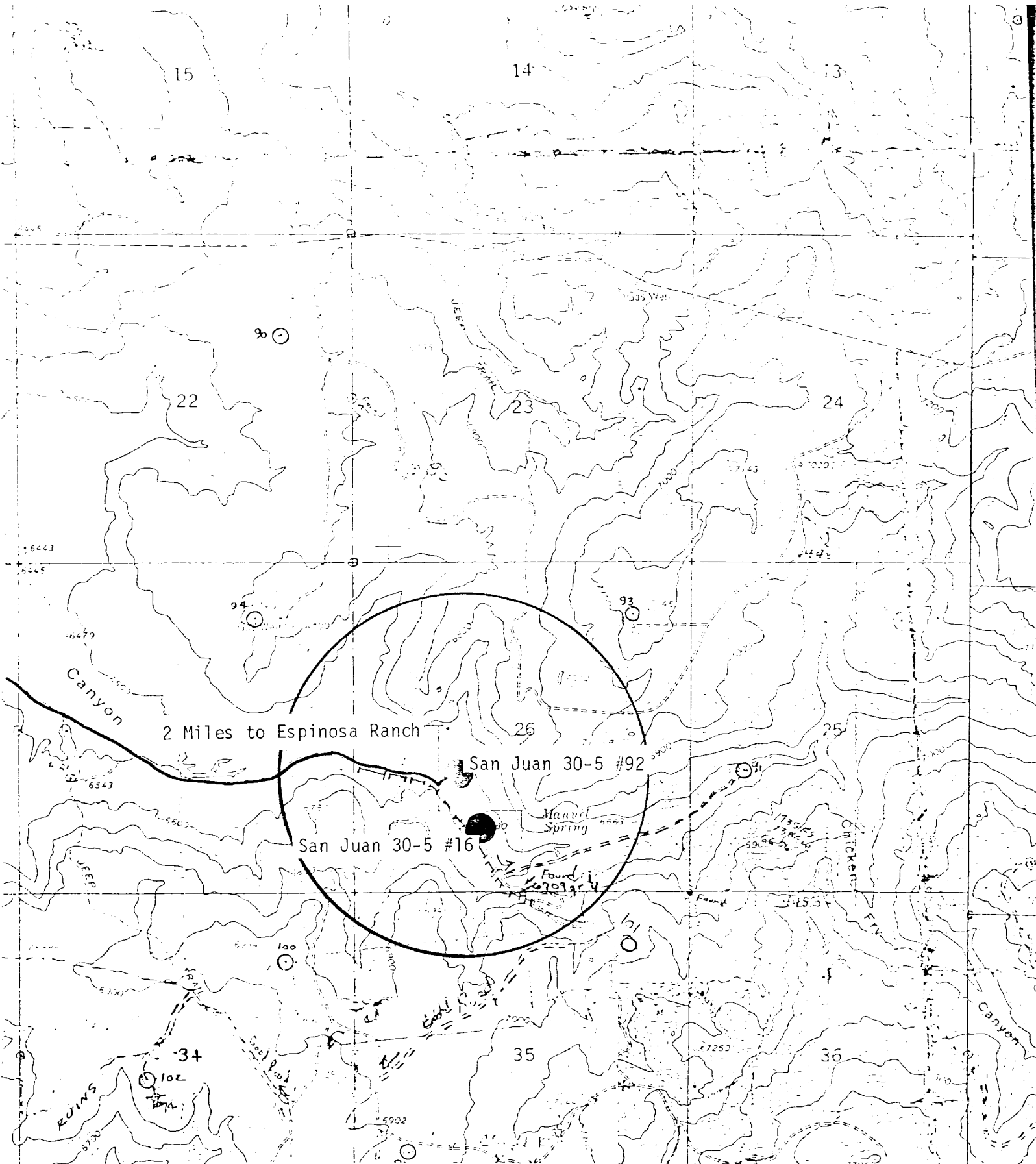
Date
November 1, 1982

I hereby certify that the well location shown on this plat was plotted from field notes of actual surveys made by me or under my supervision, and that the same is true and correct to the best of my knowledge and belief.

Date Surveyed
October 22, 1982

Registered Professional Engineer and Land Surveyor
Fred B. Kerr Jr.
Fred B. Kerr Jr.

Certificate No. **1000**



Vicinity Map for
NORTHWEST PIPELINE CORP. #92 SAN JUAN 30-5 UNIT
1820'FSL 1710'FWL Sec. 26-T30N-R5W
RIO ARriba COUNTY, NEW MEXICO