

UNITED STATES  
DEPARTMENT OF THE INTERIOR  
BUREAU OF LAND MANAGEMENT

SUBMIT IN TRIPLICATE\*  
(Other instructions on  
reverse side)

Form approved.  
Budget Bureau No. 1004-0136  
Expires August 31, 1985

APPLICATION FOR PERMIT TO DRILL, DEEPEN, OR PLUG BACK

1A. TYPE OF WORK

DRILL ☒

DEEPEN ☐

PLUG BACK ☐

B. TYPE OF WELL

OIL  
WELL ☐

GAS  
WELL ☒

OTHER

SINGLE  
ZONE ☐

MULTIPLE  
ZONE ☒

2. NAME OF OPERATOR

Robert L. Bayless

3. ADDRESS OF OPERATOR

P.O. Box 168, Farmington, NM 87499

4. LOCATION OF WELL (Report location clearly and in accordance with any State requirements.)

At surface

1665' FSL & 940' FEL

At proposed prod. zone

same

BUREAU OF LAND MANAGEMENT  
FARMINGTON RESOURCE AREA

14. DISTANCE IN MILES AND DIRECTION FROM NEAREST TOWN OR POST OFFICE\*

15. DISTANCE FROM PROPOSED\*

LOCATION TO NEAREST  
PROPERTY OR LEASE LINE, FT.  
(Also to nearest drlg. unit line, if any)

18. DISTANCE FROM PROPOSED LOCATION\*  
TO NEAREST WELL, DRILLING, COMPLETED,  
OR APPLIED FOR, ON THIS LEASE, FT.

21. ELEVATIONS (Show whether DF, RT, GR, etc.)

7098' RKB

7085' GL

DRILLING OPERATIONS AUTHORIZED ARE  
SUBJECT TO COMPLIANCE WITH ATTACHED

22. APPROX. DATE WORK WILL START\*

ASAP

23.

GENERAL REQUIREMENTS

SIZE OF HOLE	SIZE OF CASING	WEIGHT PER FOOT	SETTING DEPTH	QUANTITY OF CEMENT
9"	7"	23#/ft	125	30 ft <sup>3</sup> Class B
6 1/4"	4 1/2"	11.6#/ft	4060	206 ft <sup>3</sup> Class B w/2% econofil tailed by 89 ft# 50-50 pozmix

Will drill 9" hole to 125' and set 125 feet 23#/ft J55 casing cementing with 30 ft<sup>3</sup> Class B, circulated to surface. Will drill 6 1/4" hole to 4060' and run 4060' of 4 1/2" 11.6#/ft J55 casing and cement with 206 ft<sup>3</sup> Class B w/2% econofil tailed by 89 ft<sup>3</sup> 50-50 pozmix with 2% gel and 10% salt. Circulating medium will be clear water, natural mud and water loss control additives. No abnormal pressures or temperatures are anticipated.

Will run Induction and Density Logs. Blowout preventer schematic is attached. The gas from this formation is not dedicated to a gas contract.

ESTIMATED TOPS: Ojo Alamo - 3142'  
Kirtland - 3382'  
Fruitland - 3627'  
Pictured Cliffs - 3740'  
T.D. - 4060'

OCT 27 1986

OIL CON. DIV.,  
DIST. 3

IN ABOVE SPACE DESCRIBE PROPOSED PROGRAM: If proposal is to deepen or plug back, give data on present productive zone and proposed new productive zone. If proposal is to drill or deepen directionally, give pertinent data on subsurface locations and measured and true vertical depths. Give blowout preventer program if any.

24.

SIGNED

TITLE Operator

DATE 9/18/86

(This space for Federal or State office use)

APPROVED  
AS AMENDED

PERMIT NO.

APPROVAL DATE

APPROVED BY

TITLE

DATE OCT 22 1986

CONDITIONS OF APPROVAL, IF ANY:

NMOCC

\*See Instructions On Reverse Side

Mark Kelly  
AREA MANAGER

**NEW MEXICO OIL CONSERVATION COMMISSION  
WELL LOCATION AND ACREAGE DEDICATION PLAT**

Form C-102  
Supersedes C-128  
Effective 1-1-65

All distances must be from the outer boundaries of the Section.

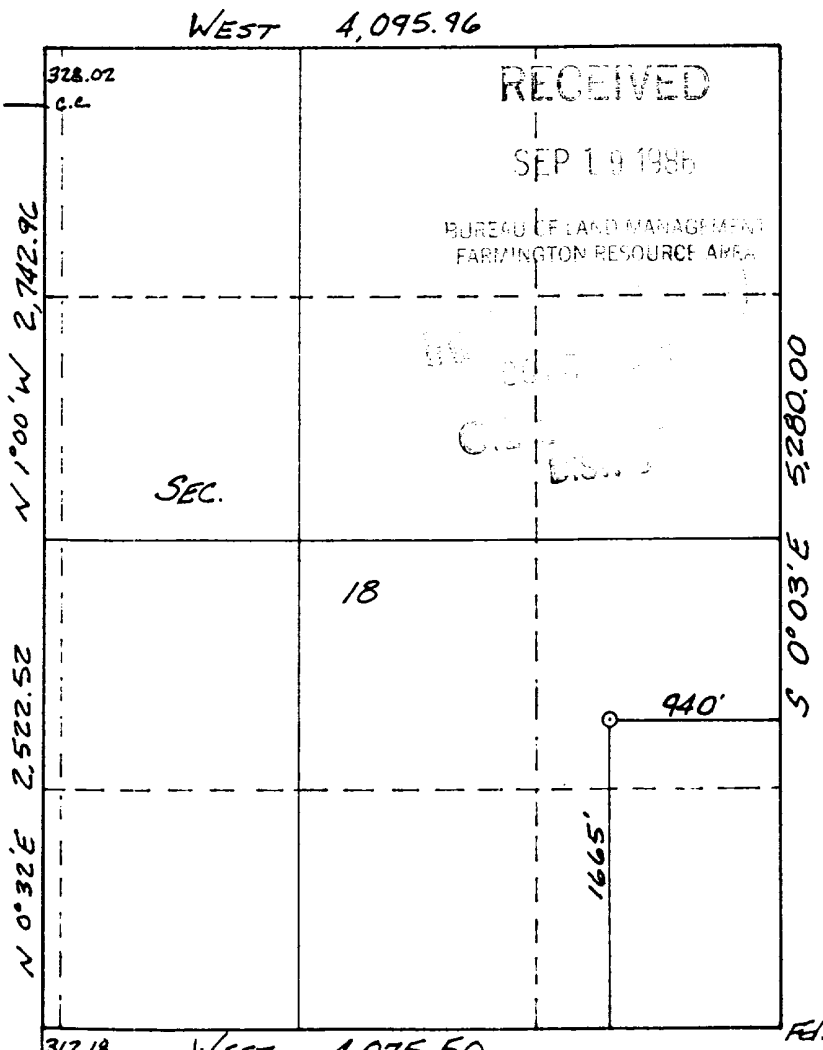
Operator <b>ROBERT L. BAYLESS</b>			Lease <b>JICARILLA 459</b>		Well No. <b>1</b>
Unit Letter <b>I</b>	Section <b>18</b>	Township <b>30N</b>	Range <b>3W</b>	County <b>Rio Arriba</b>	
Actual Footage Location of Well: <b>1665</b> feet from the <b>South</b> line and <b>940</b> feet from the <b>East</b> line					
Ground Level Elev. <b>7085</b>	Producing Formation <b>Fruitland/Pictured Cliff</b>	Pool <b>Wildcat</b>	Dedicated Acreage: <b>160</b> Acres		

1. Outline the acreage dedicated to the subject well by colored pencil or hachure marks on the plat below.
2. If more than one lease is dedicated to the well, outline each and identify the ownership thereof (both as to working interest and royalty).
3. If more than one lease of different ownership is dedicated to the well, have the interests of all owners been consolidated by communitization, unitization, force-pooling, etc?

☐ Yes ☐ No If answer is "yes," type of consolidation \_\_\_\_\_

If answer is "no," list the owners and tract descriptions which have actually been consolidated. (Use reverse side of this form if necessary.) \_\_\_\_\_

No allowable will be assigned to the well until all interests have been consolidated (by communitization, unitization, forced-pooling, or otherwise) or until a non-standard unit, eliminating such interests, has been approved by the Commission.



**CERTIFICATION**

I hereby certify that the information contained herein is true and complete to the best of my knowledge and belief.

Name  
**Robert L. Bayless**

Position  
**Operator**

Company  
**Robert L. Bayless**

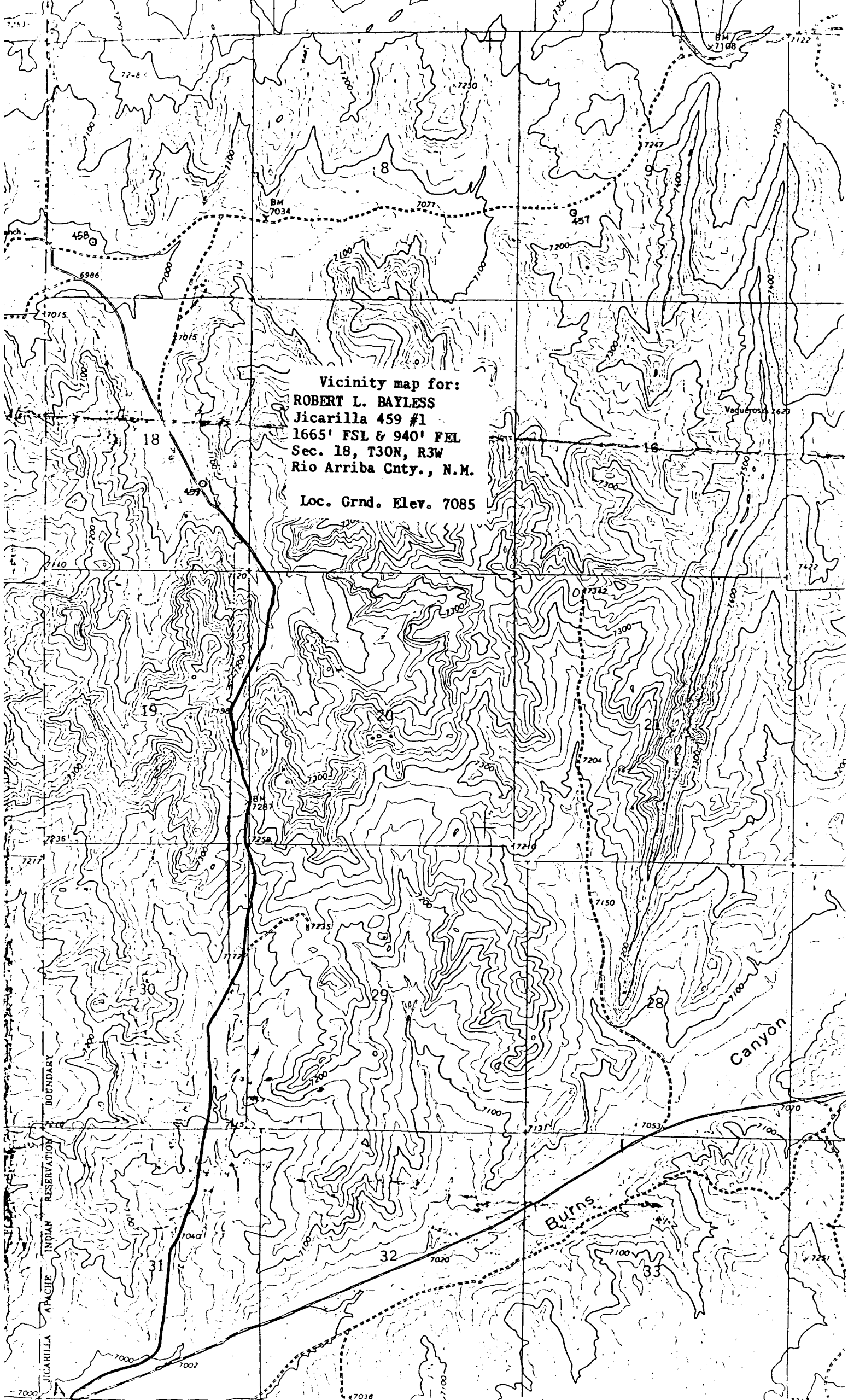
Date  
**September 18, 1986**

I hereby certify that the well location shown on this plat was plotted from field notes of actual surveys made by me or under my supervision, and that the same is true and correct to the best of my knowledge and belief.

Date Surveyed **8-14-86**  
**William E. Mahoney II**

Registered Professional Engineer  
and Land Surveyor  
**38466**

Certificate No. **8466**



Vicinity map for:  
ROBERT L. BAYLESS  
Jicarilla 459 #1  
1665' FSL & 940' FEL  
Sec. 18, T30N, R3W  
Rio Arriba Cnty., N.M.  
Loc. Grnd. Elev. 7085