

need DHC w/ PC

P. O. BOX 2088  
SANTA FE, NEW MEXICO 87501

Form C-102  
Revised 10-1-72

All distances must be from the outer boundaries of the Section

Operator <b>ROBERT L. BAYLESS</b>					Lease <b>JICARILLA 456</b>		Well No. <b>1</b>		
Unit Letter <b>N</b>		Section <b>11</b>		Township <b>30 North</b>		Range <b>3 West</b>		County <b>Rio Arriba</b>	
Actual Footage Location of well: (cardinal) <b>790</b> feet from the <b>South</b> line and <b>1850</b> feet from the <b>West</b> line									
Ground Level Elev. <b>7286</b>		Producing Formation <b>Fruitland Coal</b>			Pool <b>Basin-Fruitland Coal</b>			Dedicated Acreage: <b>320</b> Acres	

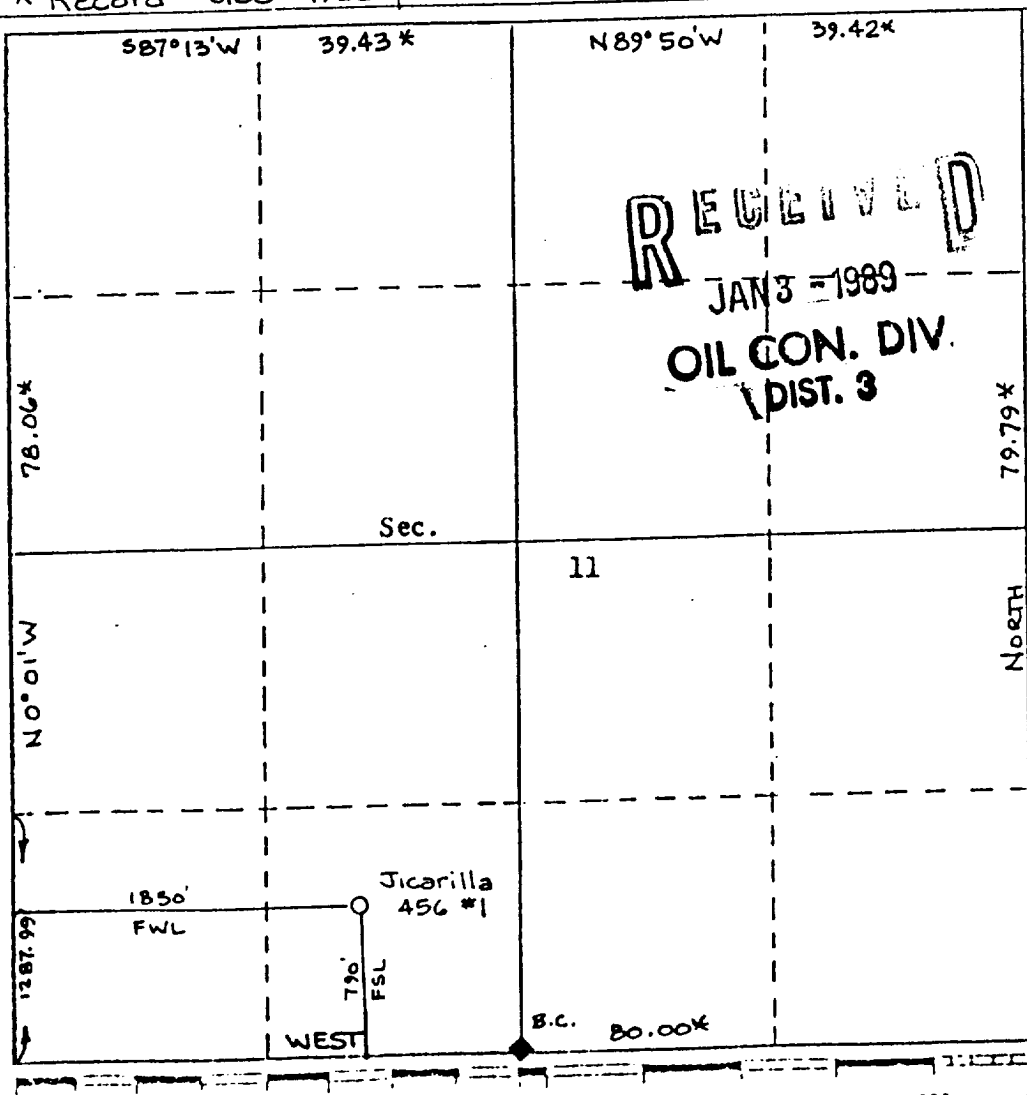
1. Outline the acreage dedicated to the subject well by colored pencil or hatchure marks on the plat below.
2. If more than one lease is dedicated to the well, outline each and identify the ownership thereof (both as to working interest and royalty).
3. If more than one lease of different ownership is dedicated to the well, have the interests of all owners been consolidated by communitization, unitization, force-pooling, etc?

☐ Yes   ☐ No   If answer is "yes," type of consolidation

If answer is "no," list the owners and tract descriptions which have actually been consolidated. (Use reverse side of this form if necessary.) \_\_\_\_\_

No allowable will be assigned to the well until all interests have been consolidated (by communitization, unitization, forced-pooling, or otherwise) or until a non-standard unit, eliminating such interests, has been approved by the Division.

\* Record GLO 1922 plot



### CERTIFICATION

I hereby certify that the information contained herein is true and complete to the best of my knowledge and belief.

Verin H. McLeod

Name Kevin H. McCord

Position  
Petroleum Engineer

Company  
Robert L. Bayless

Date 12/30/88

I hereby certify that the well location shown on this plat was plotted from field notes of actual surveys made by me or under my supervision, and that the same is true and correct to the best of my knowledge and belief.

Date Surveyed  
Aug. 28, 1986 8894

Registered Professional Engineer  
and/or Land Surveyor

Certificate No. 8894