

UNITED STATES
DEPARTMENT OF THE INTERIOR
BUREAU OF LAND MANAGEMENT

RECEIVED
BLM MAIL ROOM

APPLICATION FOR PERMIT TO DRILL, DEEPEN, OR PLUG BACK

1a. TYPE OF WORK

DRILL ☒

DEEPEN ☐

PLUG BACK ☐

b. TYPE OF WELL

OIL
WELL ☐

GAS ☒

OTHER ☐

2. NAME OF OPERATOR

El Paso Natural Gas Company *Mendoncel, Inc.*

3. ADDRESS OF OPERATOR

PO Box 4289, Farmington, NM 87499

4. LOCATION OF WELL (Report location clearly and in accordance with any State requirements.)

At SW 1/4 Sec. 35, T-30-N, R-7-W

At proposed prod. zone

14. DISTANCE IN MILES AND DIRECTION FROM NEAREST TOWN OR POST OFFICE*

4 miles East of Navajo City, NM

16. DISTANCE FROM PROPOSED*

LOCATION TO NEAREST
PROPERTY OR LEASE LINE, FT. 1780'
(Also to nearest drlg. unit line, if any)

17. NO. OF ACRES IN LEASE

Unit 2246

18. NO. OF ACRES ASSIGNED

TO THIS WELL 160.00

19. DISTANCE FROM PROPOSED LOCATION*

TO NEAREST WELL, DRILLING, COMPLETION
OR APPLIED FOR, ON THIS LEASE, FT. 1000'

20. PROPOSED DEPTH

3715'

21. ROTARY OR CABLE TOOLS

Rotary

22. ELEVATIONS (Show whether DF, RT, GR, etc.)

6847' GL

DRILLING OPERATIONS AUTHORIZED ARE
SUBJECT TO COMPLIANCE WITH ATTACHED
"GENERAL REQUIREMENTS"

23. APPROX. DATE WORK WILL START*

This action is subject to technical and
procedural review pursuant to 43 CFR 3165.3
and appeal pursuant to 43 CFR 3165.4.

24. PROPOSED CASING AND CEMENTING PROGRAM

SIZE OF HOLE	SIZE OF CASING	WEIGHT PER FOOT	SETTING DEPTH	QUANTITY OF CEMENT
12 1/4"	9 5/8"	32.3#	200'	154 cu.ft. circulate
8 3/4"	7"	20.0#	3590'	267 cu.ft.
6 1/4"	open hole	23.0#	3715'	do not cement

The Fruitland formation will be completed.

A 3000 psi WP and 6000 psi test double gate preventer equipped with
blind and pipe rams will be used for blow out prevention on this well.

This gas is dedicated.

The SW/4 of Section 35 is dedicated to this well.

RECEIVED
AUG 10 1987
OIL CON. DIV.
DIST. 3

IN ABOVE SPACE DESCRIBE PROPOSED PROGRAM: If proposal is to deepen or plug back, give data on present productive zone and proposed new productive zone. If proposal is to drill or deepen directionally, give pertinent data on subsurface locations and measured and true vertical depths. Give blowout preventer program, if any.

24.

SIGNED

Reggie Cook

TITLE

Drilling Clerk

DATE

07-29-87

(This space for Federal or State office use)

APPROVED
AS AMENDED

PERMIT NO.

APPROVAL DATE

APPROVED BY

TITLE

AUG 06 1987
18/ John B. McKee

CONDITIONS OF APPROVAL, IF ANY:

NMOCC

FOR

AREA MANAGER

*See Instructions On Reverse Side

Title 18 U.S.C. Section 1001, makes it a crime for any person knowingly and willfully to make to any department or agency of the United States any false, fictitious or fraudulent statements or representations as to any matter within its jurisdiction.

**NEW MEXICO OIL CONSERVATION COMMISSION
WELL LOCATION AND ACREAGE DEDICATION PLAT**

Form C-102
Supersedes C-120
Effective 1-1-63

All distances must be from the outer boundaries of the Section.

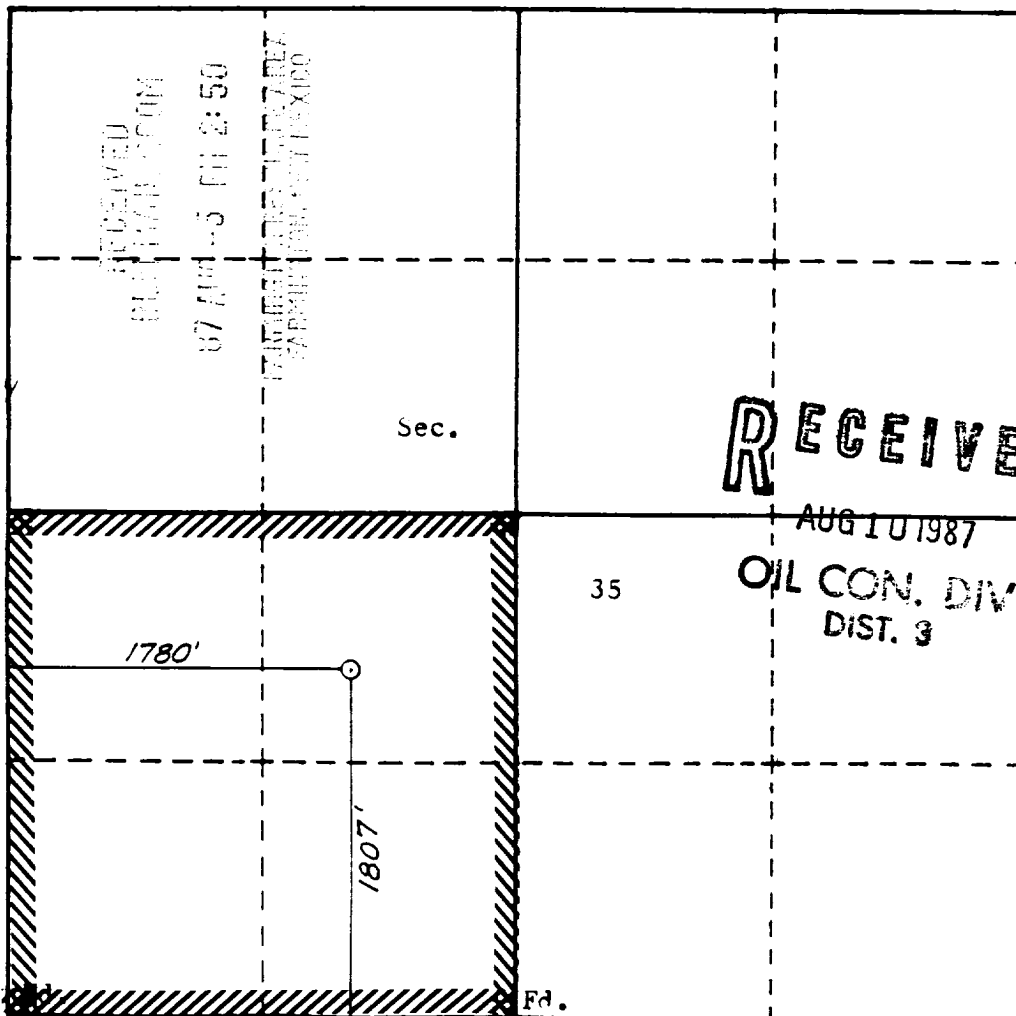
Operator EL PASO NATURAL GAS CO. <i>Mendon</i>			Lease SAN JUAN 30-6 UNIT (SF-079385)		Well No. 414
Unit Letter K	Section 35	Township 30 N	Range 7 W	County Rio Arriba	
Actual Footage Location of Well: 1807 feet from the South line and 1780 feet from the West line					
Ground Level Elev: 6847	Producing Formation Fruitland		Pool Undesignated		Dedicated Acreage 160 Acres

1. Outline the acreage dedicated to the subject well by colored pencil or hachure marks on the plat below.
2. If more than one lease is dedicated to the well, outline each and identify the ownership thereof (both as to working interest and royalty).
3. If more than one lease of different ownership is dedicated to the well, have the interests of all owners been consolidated by communitization, unitization, force-pooling, etc?

☒ Yes ☐ No If answer is "yes," type of consolidation Unitization

If answer is "no," list the owners and tract descriptions which have actually been consolidated. (Use reverse side of this form if necessary.) _____

No allowable will be assigned to the well until all interests have been consolidated (by communitization, unitization, forced-pooling, or otherwise) or until a non-standard unit, eliminating such interests, has been approved by the Commission.



CERTIFICATION

I hereby certify that the information contained herein is true and complete to the best of my knowledge and belief.

Name
El Paso Natural Gas Co

Position
Drilling Clerk

Company
El Paso Natural Gas Co

Date

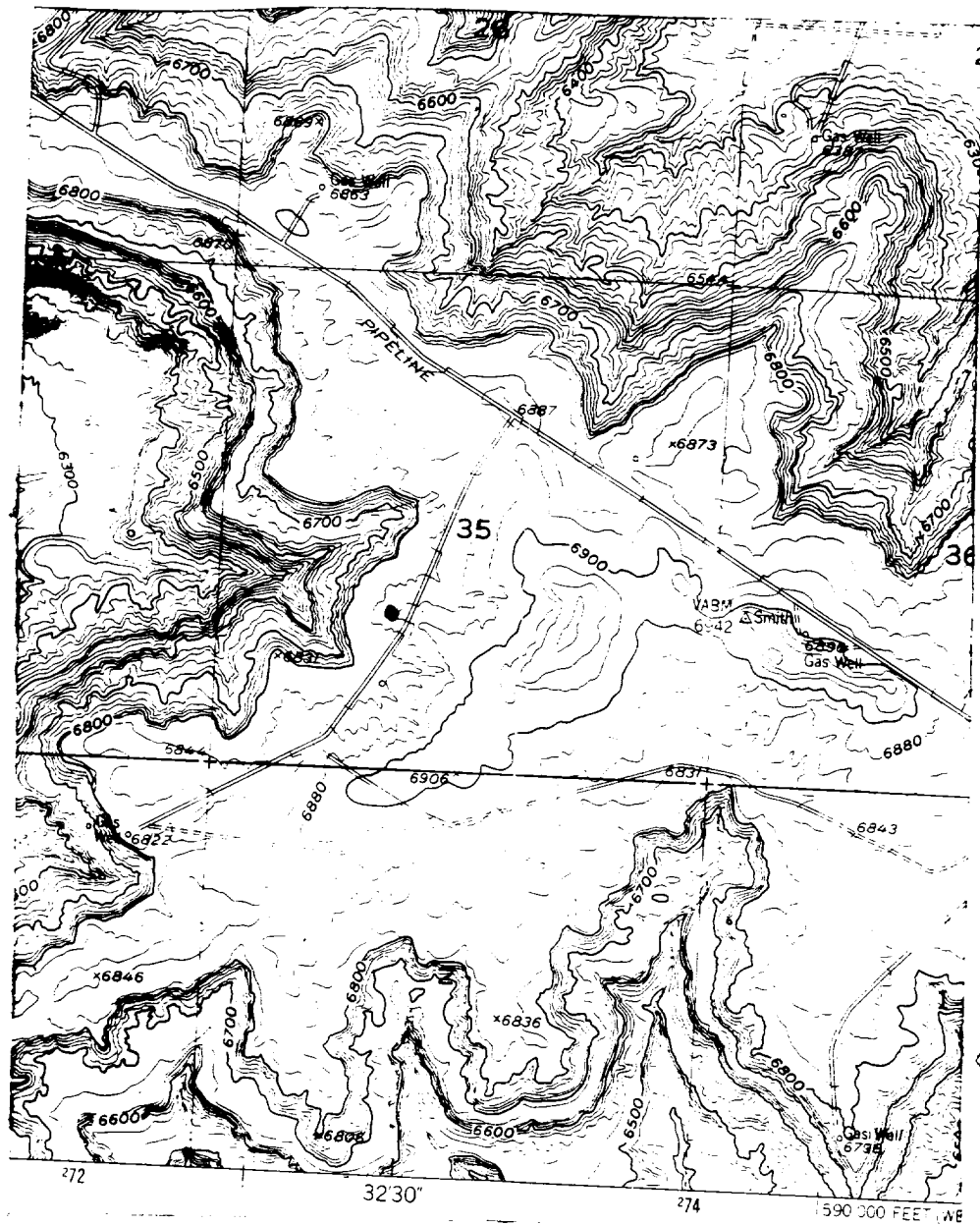
I hereby certify that the well location shown on this plat was plotted from field notes of actual surveys made by me or under my supervision, and that the same is true and correct to the best of my knowledge and belief.

Date Surveyed
6-10-87

Registered Professional Engineer and Land Surveyor
WILLIAM M. HANKE II
8466

Certificate No.
8466

SAN JUAN 30-6 Unit #414



Map #2

LEGEND OF RIGHT-OF-WAYS

EXISTING ROADS

EXISTING PIPELINES

EXISTING ROAD & PIPELINE

PROPOSED ROADS

PROPOSED PIPELINES

PROPOSED ROAD & PIPELINE

FICAT

NE

