

UNITED STATES  
DEPARTMENT OF THE INTERIOR  
BUREAU OF LAND MANAGEMENT

APPLICATION FOR PERMIT TO DRILL, DEEPEN, OR PLUG BACK

1a. TYPE OF WORK

DRILL ☒

DEEPEN ☐

PLUG BACK ☐

b. TYPE OF WELL

OIL  
WELL ☐

GAS  
WELL ☒

OTHER

SINGLE  
ZONE ☒

MULTIPLE  
ZONE ☐

2. NAME OF OPERATOR

Robert L. Bayless

3. ADDRESS OF OPERATOR

P.O. Box 168, Farmington, NM 87499

4. LOCATION OF WELL (Report location clearly and in accordance with any State requirements.)

At surface

790' FSL & 1675' FEL

At proposed prod. zone

14. DISTANCE IN MILES AND DIRECTION FROM NEAREST TOWN OR POST OFFICE\*

15. DISTANCE FROM PROPOSED\*

LOCATION TO NEAREST  
PROPERTY OR LEASE LINE, FT.  
(Also to nearest drig. unit line, if any)

18. DISTANCE FROM PROPOSED LOCATION\*

TO NEAREST WELL, DRILLING, COMPLETED,  
OR APPLIED FOR, ON THIS LEASE, FT.

16. NO. OF ACRES IN LEASE

2560

19. PROPOSED DEPTH

4250'

17. NO. OF ACRES ASSIGNED  
TO THIS WELL

160

20. ROTARY OR CABLE TOOLS

0'-TD

21. ELEVATIONS (Show whether DF, RT, GR, etc.)

7533' GL

7545' RKB

This action is subject to technical and  
procedural review pursuant to 43 CFR 3165.3

and appeal pursuant to 43 CFR 3165.4

PROPOSED CASING AND CEMENTING PROGRAM

22. APPROX. DATE WORK WILL START\*

23.

DRILLING OPERATIONS AUTHORIZED ARE  
SUBJECT TO COMPLIANCE WITH ATTACHED

SIZE OF HOLE	SIZE OF CASING	WEIGHT PER FOOT	SETTING DEPTH	GENERAL QUANTITY OF CEMENT
9-7/8"	7-5/8"	26.4#	125'	60 sx Class "B" - 72 ft <sup>3</sup>
6-3/4"	4-1/2"	11.6#	4250'	200 sx 50/50 pozmix - 252 ft <sup>3</sup>

Will drill hole to 125' and set 125 feet, 26.4#, J55 casing, cementing with 72 ft<sup>3</sup>, Class "B" cement, circulated to surface. Will drill 6-3/4" hole to 4250' and run 4250' of 4-1/2", 11.6#/ft., J55 casing and cement with 252 ft<sup>3</sup> 50/50 pozmix with 2% gel and 10% salt. Circulating medium will be clear water, natural mud and water loss control additives. No abnormal pressures or temperatures are anticipated. Will run Induction and Density Logs. Blowout preventer schematic is attached. The gas from this formation is not dedicated to a gas contract.

ESTIMATED TOPS: Ojo Alamo - 3383'  
Kirtland - 3609'  
Fruitland - 3670'  
Pictured Cliffs - 3870'  
T.D. - 4250'

RECEIVED  
AUG 26 1987  
OIL CON. DIV  
DIST. 3

IN ABOVE SPACE DESCRIBE PROPOSED PROGRAM: If proposal is to deepen or plug back, give data on present productive zone and proposed new productive zone. If proposal is to drill or deepen directionally, give pertinent data on subsurface locations and measured and true vertical depths. Give blowout preventer program, if any.

24.

SIGNED

Kevin H. McCord

TITLE Petroleum Engineer

DATE July 15, 1987

(This space for Federal or State office use)

PERMIT NO.

APPROVAL DATE

APPROVED BY

TITLE

DATE

CONDITIONS OF APPROVAL, IF ANY:

NMOCG

/s/ J. Stan McKee

\*See Instructions On Reverse Side

FOR

Title 18 U.S.C. Section 1001, makes it a crime for any person knowingly and willfully to make to any department or agency of the United States any false, fictitious or fraudulent statements or representations as to any matter within its jurisdiction.

**NEW MEXICO OIL CONSERVATION COMMISSION  
WELL LOCATION AND ACREAGE DEDICATION PLAT**

Form C-102  
Supersedes C-128  
Effective 1-1-83

All distances must be from the outer boundaries of the Section.

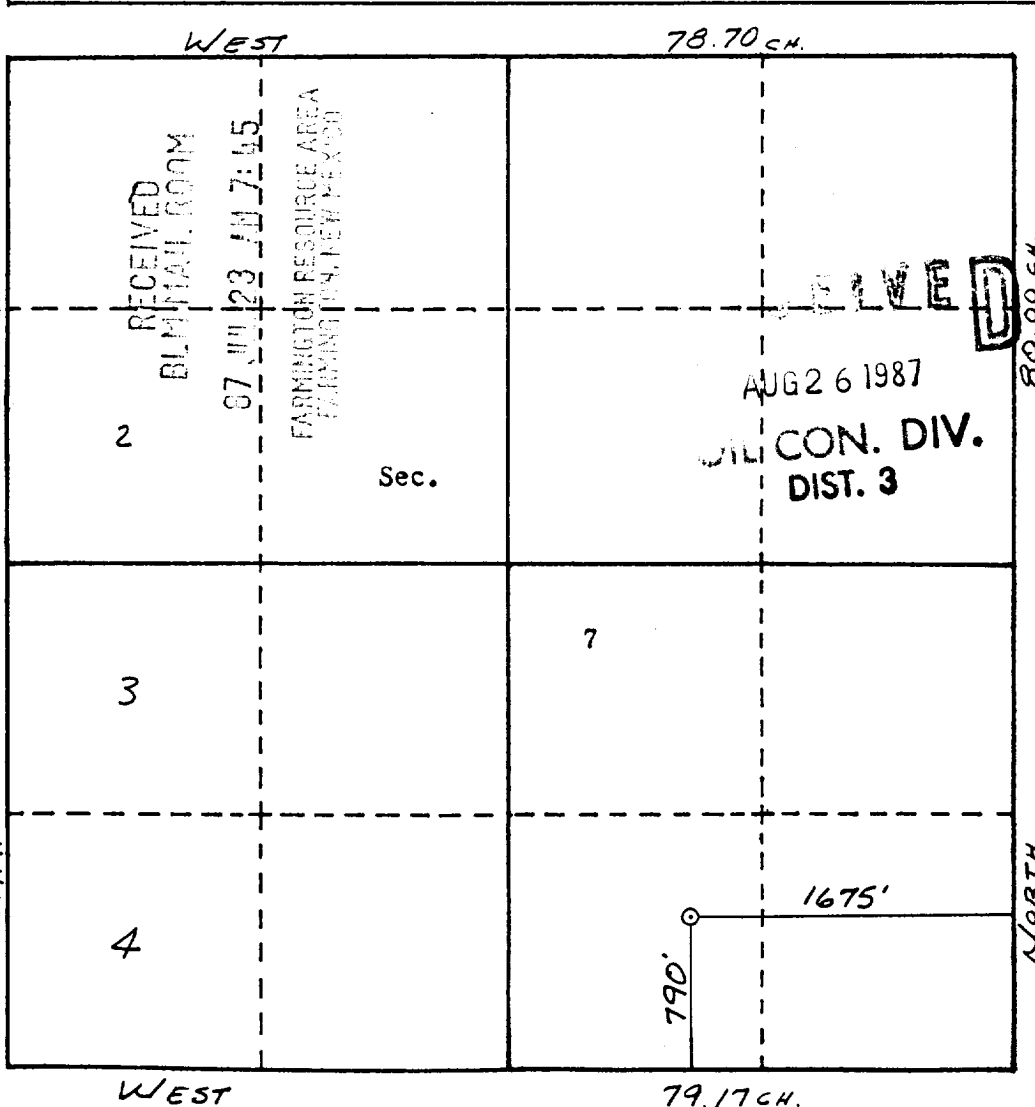
Operator <b>ROBERT L. BAYLESS</b>			Lease <b>JICARILLA 516</b>		Well No. <b>1</b>
Unit Letter <b>0</b>	Section <b>7</b>	Township <b>30 N</b>	Range <b>2 W</b>	County <b>Rio Arriba</b>	
Actual Footage Location of Well: <b>790</b> feet from the <b>South</b> line and <b>1675</b> feet from the <b>East</b> line					
Ground Level Elev: <b>7533</b>	Producing Formation <b>Pictured Cliffs</b>		Pool <b>Wildcat</b>	Dedicated Acreage: <b>160</b> Acres	

1. Outline the acreage dedicated to the subject well by colored pencil or hachure marks on the plat below.
2. If more than one lease is dedicated to the well, outline each and identify the ownership thereof (both as to working interest and royalty).
3. If more than one lease of different ownership is dedicated to the well, have the interests of all owners been consolidated by communitization, unitization, force-pooling, etc?

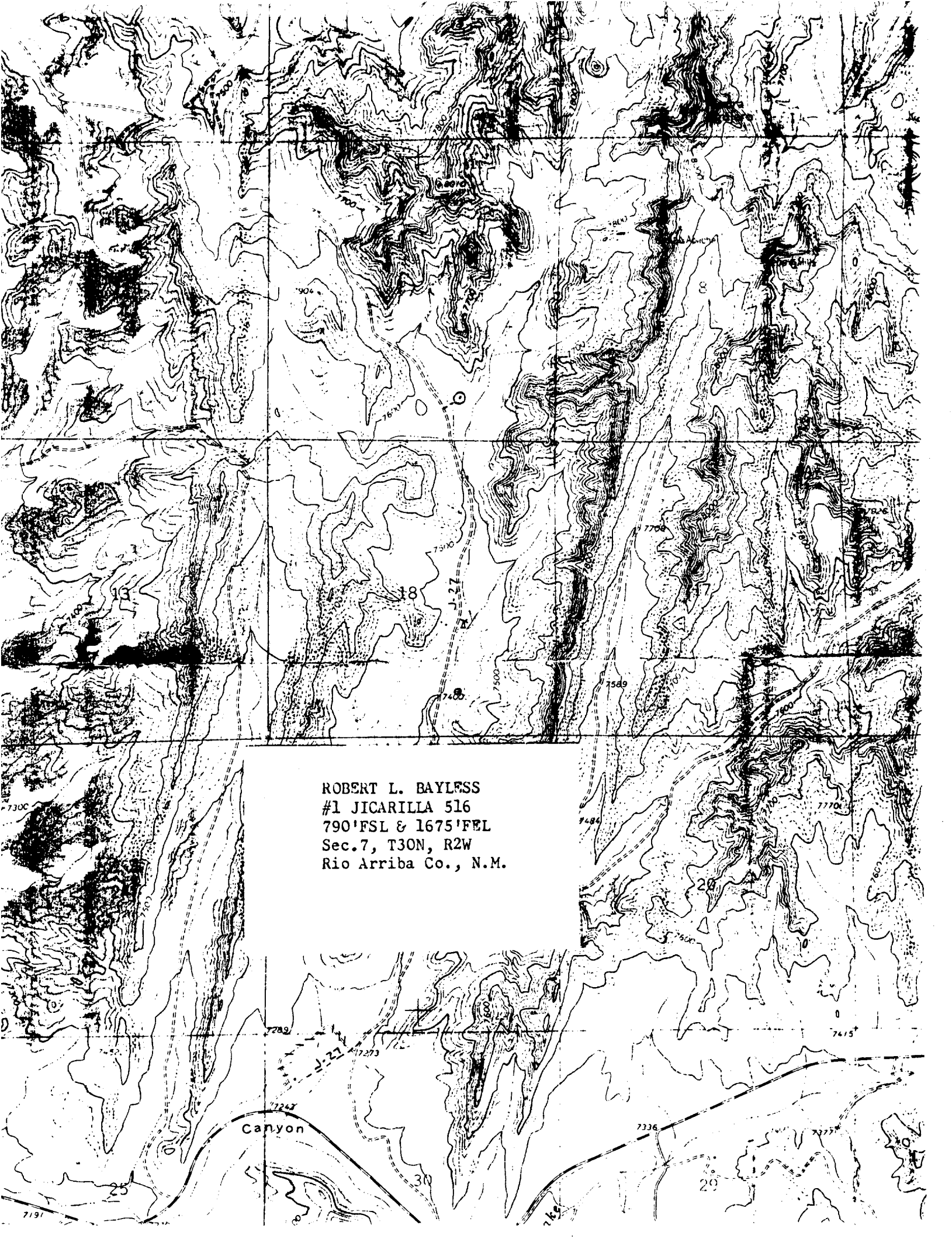
☐ Yes ☐ No If answer is "yes," type of consolidation \_\_\_\_\_

If answer is "no," list the owners and tract descriptions which have actually been consolidated. (Use reverse side of this form if necessary.) \_\_\_\_\_

No allowable will be assigned to the well until all interests have been consolidated (by communitization, unitization, forced-pooling, or otherwise) or until a non-standard unit, eliminating such interests, has been approved by the Commission.



<b>CERTIFICATION</b>	
I hereby certify that the information contained herein is true and complete to the best of my knowledge and belief.	
Name	<b>Kevin H. McCord</b>
Position	<b>Petroleum Engineer</b>
Company	<b>Robert L. Bayless Producer</b>
Date	<b>July 15, 1987</b>
I hereby certify that the well location shown on this plat was plotted from field notes of actual surveys made by me or under my supervision, and that the same is true and correct to the best of my knowledge and belief.	
Date Surveyed	<b>July 15, 1987</b>
Registered Professional Engineer and Land Surveyor	<b>William S. Linke II #8466</b>
Certificate No. <b>8466</b>	



ROBERT L. BAYLESS  
#1 JICARILLA 516  
790' FSL & 1675' FEL  
Sec. 7, T30N, R2W  
Rio Arriba Co., N.M.

The map is a detailed topographic representation of a rugged landscape. It features numerous contour lines indicating elevation changes, with labels such as 7300, 7400, 7500, 7600, 7700, and 7800. A grid system is overlaid on the map, with section numbers 13, 18, 20, and 25 visible. A dashed line labeled 'J-27' runs vertically through the center. At the bottom, a feature is labeled 'Canyon' with an elevation of 7247. Other numerical labels include 7191, 7282, 7273, 7336, 7375, 7415, 7486, 7500, 7549, 7580, 7600, 7615, 7626, 7640, 7650, 7660, 7670, 7680, 7690, 7700, 7710, 7720, 7730, 7740, 7750, 7760, 7770, 7780, 7790, 7800, 7810, 7820, 7830, 7840, 7850, 7860, 7870, 7880, 7890, 7900, 7910, 7920, 7930, 7940, 7950, 7960, 7970, 7980, 7990, 8000, 8010, 8020, 8030, 8040, 8050, 8060, 8070, 8080, 8090, 8100, 8110, 8120, 8130, 8140, 8150, 8160, 8170, 8180, 8190, 8200, 8210, 8220, 8230, 8240, 8250, 8260, 8270, 8280, 8290, 8300, 8310, 8320, 8330, 8340, 8350, 8360, 8370, 8380, 8390, 8400, 8410, 8420, 8430, 8440, 8450, 8460, 8470, 8480, 8490, 8500, 8510, 8520, 8530, 8540, 8550, 8560, 8570, 8580, 8590, 8600, 8610, 8620, 8630, 8640, 8650, 8660, 8670, 8680, 8690, 8700, 8710, 8720, 8730, 8740, 8750, 8760, 8770, 8780, 8790, 8800, 8810, 8820, 8830, 8840, 8850, 8860, 8870, 8880, 8890, 8900, 8910, 8920, 8930, 8940, 8950, 8960, 8970, 8980, 8990, 9000, 9010, 9020, 9030, 9040, 9050, 9060, 9070, 9080, 9090, 9100, 9110, 9120, 9130, 9140, 9150, 9160, 9170, 9180, 9190, 9200, 9210, 9220, 9230, 9240, 9250, 9260, 9270, 9280, 9290, 9300, 9310, 9320, 9330, 9340, 9350, 9360, 9370, 9380, 9390, 9400, 9410, 9420, 9430, 9440, 9450, 9460, 9470, 9480, 9490, 9500, 9510, 9520, 9530, 9540, 9550, 9560, 9570, 9580, 9590, 9600, 9610, 9620, 9630, 9640, 9650, 9660, 9670, 9680, 9690, 9700, 9710, 9720, 9730, 9740, 9750, 9760, 9770, 9780, 9790, 9800, 9810, 9820, 9830, 9840, 9850, 9860, 9870, 9880, 9890, 9900, 9910, 9920, 9930, 9940, 9950, 9960, 9970, 9980, 9990, 10000.