

UNITED STATES  
DEPARTMENT OF THE INTERIOR

BUREAU OF LAND MANAGEMENT

APPLICATION FOR PERMIT TO DRILL, DEEPEN, OR PLUG BACK

1a. TYPE OF WORK

DRILL ☒

DEEPEN ☒ JUL 30 PLUG BACK ☐

b. TYPE OF WELL

OIL  
WELL ☐

GAS  
WELL ☒

OTHER ☐

FARMINGTON ☒ MULTIPLE ☐  
FARMINGTON, NEW MEXICO

2. NAME OF OPERATOR

Robert L. Bayless

3. ADDRESS OF OPERATOR

P.O. Box 168, Farmington, NM 87499

4. LOCATION OF WELL (Report location clearly and in accordance with any State requirements.)\*

At surface

1815'FNL & 230'FEL

At proposed prod. zone

Same

14. DISTANCE IN MILES AND DIRECTION FROM NEAREST TOWN OR POST OFFICE\*

15. DISTANCE FROM PROPOSED\*

LOCATION TO NEAREST  
PROPERTY OR LEASE LINE, FT.  
(Also to nearest drlg. unit line, if any)

18. DISTANCE FROM PROPOSED LOCATION\*

TO NEAREST WELL, DRILLING, COMPLETED,  
OR APPLIED FOR, ON THIS LEASE, FT.

16. NO. OF ACRES IN LEASE

Approx. 2560

irregular sections

19. PROPOSED DEPTH

4080'

17. NO. OF ACRES ASSIGNED

TO THIS WELL

146.73 100

20. ROTARY OR CABLE TOOLS

0-T.D.

21. ELEVATIONS (Show whether DF, RT, GR, etc.) DRILLING OPERATIONS AUTHORIZED ARE

7089 GL 7101 RKB SUBJECT TO COMPLIANCE WITH ATTACHED

23. "GENERAL REQUIREMENTS" PROPOSED CEMENT AND CEMENTING PROGRAM

This action is subject to technical and  
procedural review pursuant to 43 CFR 3165.2  
and appeal pursuant to 43 CFR 3165.4.

SIZE OF HOLE	SIZE OF CASING	WEIGHT PER FOOT	SETTING DEPTH	QUANTITY OF CEMENT
9-7/8"	7-5/8"	26.4#	125'	60 sx Class "B" - 71 ft <sup>3</sup>
6-3/4"	4-1/2"	11.6#	4080'	200 sx 50/50 pozmix - 252 ft <sup>3</sup>

Will drill hole to 125' and set 125 feet, 7-5/8", 26.4#/ft, J55 casing, cementing with 71 ft<sup>3</sup>, Class "B" cement, circulated to surface. Will drill 6-3/4" hole to 4080' and run 4080' of 4-1/2", 11.6#/ft, J55 casing and cement with 252 ft<sup>3</sup> 50/50 pozmix with 2% gel and 10% salt. Circulating medium will be clear water, natural mud and water loss control additives. No abnormal pressures or temperatures are anticipated. Will run Induction and Density Logs. Blowout preventer schematic is attached. The gas from this formation is not dedicated to a gas contract.

ESTIMATED TOPS: Ojo Alamo - 3137'  
Kirtland - 3364'  
Fruitland - 3493'  
Pictured Cliffs - 3696'  
T.D. - 4080'

IN ABOVE SPACE DESCRIBE PROPOSED PROGRAM: If proposal is to deepen or plug back, give data on present productive zone and proposed new productive zone. If proposal is to drill or deepen directionally, give pertinent data on subsurface locations and measured and true vertical depths. Give blowout preventer program, if any.

24.

SIGNED

Kevin H. McCord

TITLE Petroleum Engineer

DATE July 29, 1987

(This space for Federal or State office use)

PERMIT NO.

APPROVAL DATE

APPROVED BY

TITLE

DATE

CONDITIONS OF APPROVAL, IF ANY:

NR000

\*See Instructions On Reverse Side

**NEW MEXICO OIL CONSERVATION COMMISSION  
WELL LOCATION AND ACREAGE DEDICATION PLAT**

Form C-102  
Supersedes C-128  
Effective 1-1-65

All distances must be from the outer boundaries of the Section.

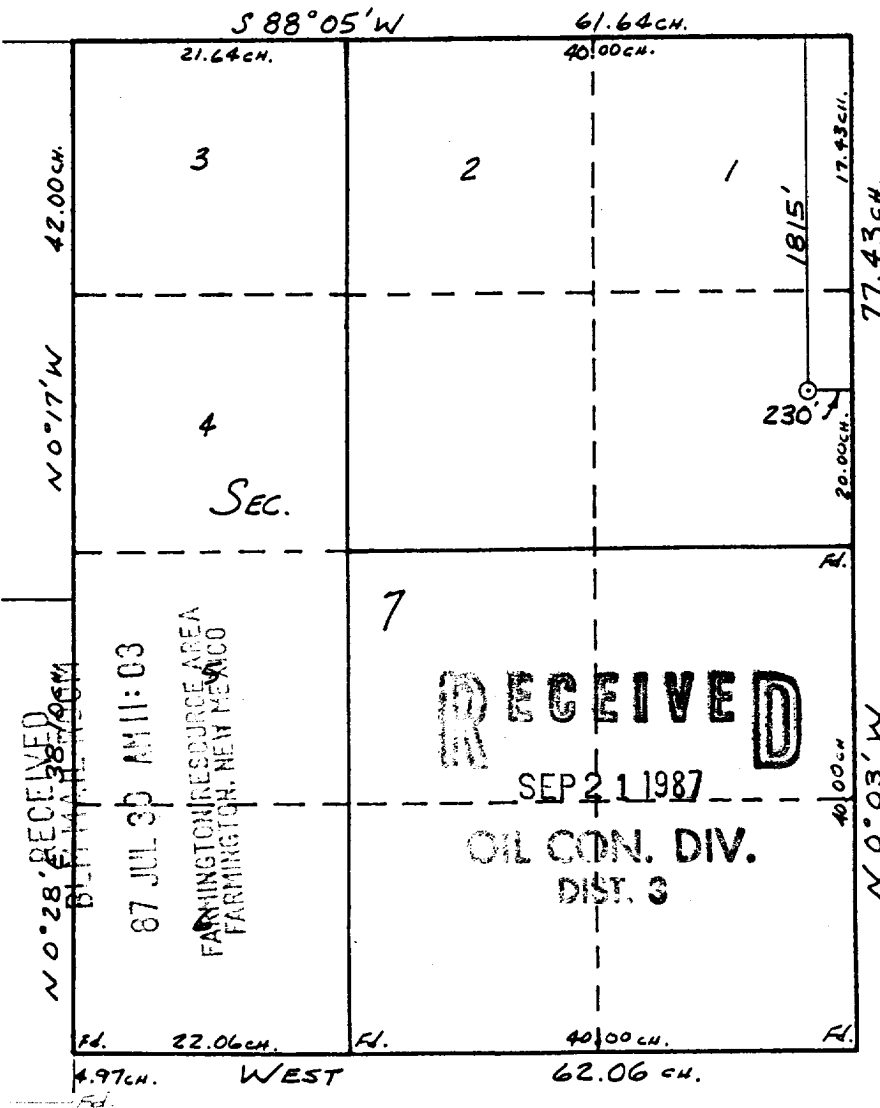
Operator <b>ROBERT L. BAYLESS</b>			Lease <b>JICARILLA 458</b>		Well No. <b>3</b>
Unit Letter <b>H</b>	Section <b>7</b>	Township <b>30 N</b>	Range <b>3 W</b>	County <b>Rio Arriba</b>	
Actual Footage Location of Well: <b>1815</b> feet from the <b>North</b> line and <b>230</b> feet from the <b>East</b> line					
Ground Level Elev. <b>7039</b>	Producing Formation <b>Pictured Cliffs</b>		Pool <b>Wildcat</b>	Dedicated Acreage <b>460.146.73</b> Acres	

1. Outline the acreage dedicated to the subject well by colored pencil or hachure marks on the plat below.
2. If more than one lease is dedicated to the well, outline each and identify the ownership thereof (both as to working interest and royalty).
3. If more than one lease of different ownership is dedicated to the well, have the interests of all owners been consolidated by communitization, unitization, force-pooling, etc?

☐ Yes ☐ No If answer is "yes," type of consolidation \_\_\_\_\_

If answer is "no," list the owners and tract descriptions which have actually been consolidated. (Use reverse side of this form if necessary.) \_\_\_\_\_

No allowable will be assigned to the well until all interests have been consolidated (by communitization, unitization, forced-pooling, or otherwise) or until a non-standard unit, eliminating such interests, has been approved by the Commission.



**CERTIFICATION**

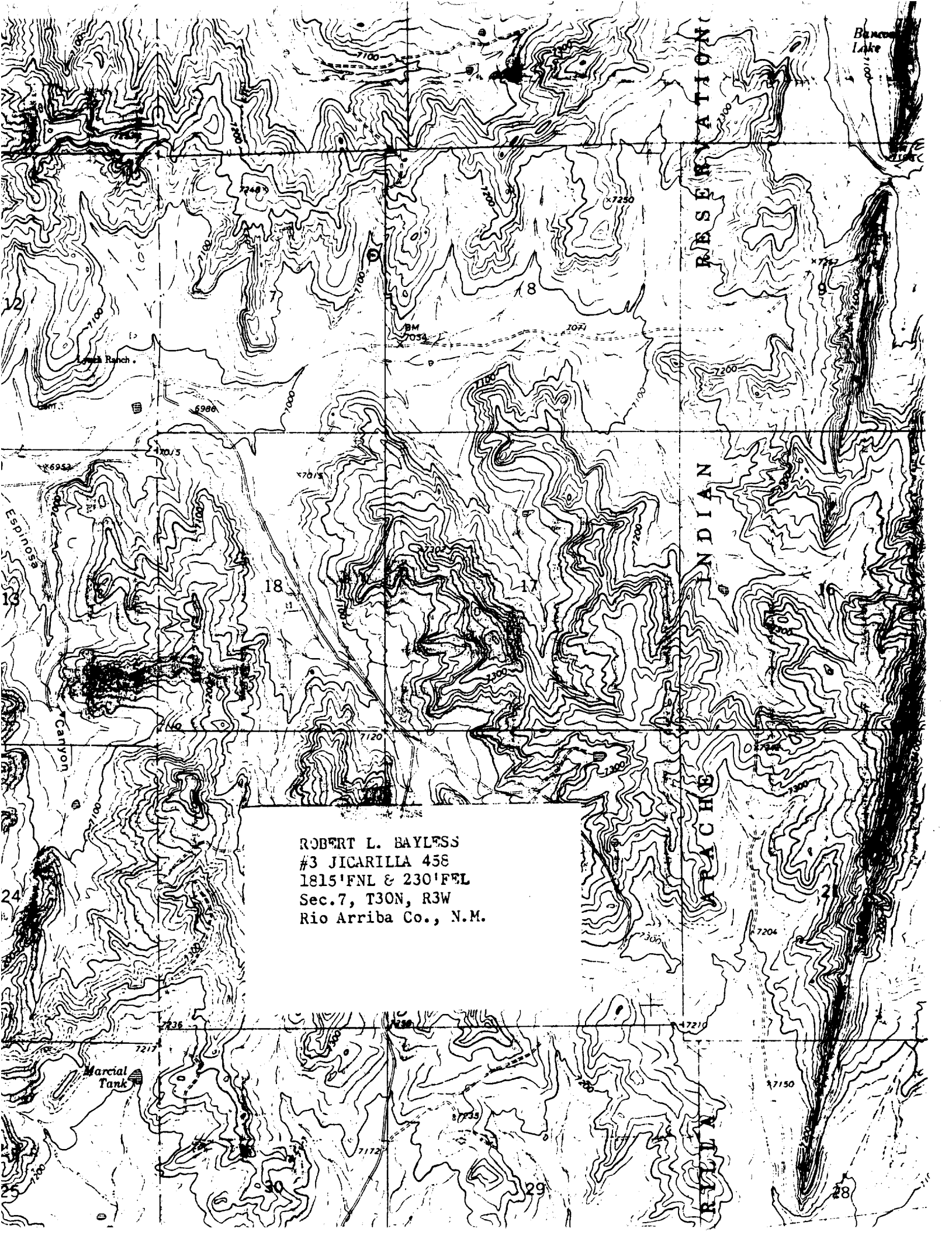
I hereby certify that the information contained herein is true and complete to the best of my knowledge and belief.

*Kevin H. McCord*

Name  
Kevin H. McCord  
Position  
Petroleum Engineer  
Company  
Robert L. Bayless, Producer  
Date  
July 29, 1987

I hereby certify that the well location shown on this plat was plotted from field notes of actual surveys made by me or under my supervision, and that the same is true and correct to the best of my knowledge and belief.

Date Surveyed  
Will  
Registered Professional Engineer and Land Surveyor  
Certificate No. 8466  
**WILLIAM E. MAHNKE**  
NEW MEXICO  
REGISTERED PROFESSIONAL LAND SURVEYOR  
8466



ROBERT L. BAYLESS  
#3 JICARILLA 458  
1815'FNL & 230'FEL  
Sec.7, T30N, R3W  
Rio Arriba Co., N.M.