

UNITED STATES
DEPARTMENT OF THE INTERIOR
BUREAU OF LAND MANAGEMENT

RECEIVED
B.L.M. MAIL ROOM

APPLICATION FOR PERMIT TO DRILL, DEEPEN, OR PLUG BACK

1A. TYPE OF WORK

DRILL ☒

DEEPEN ☐

PLUG BACK ☐

B. TYPE OF WELL

OIL
WELL ☐

GAS
WELL ☒

OTHER ☐

2. NAME OF OPERATOR

MERIDIAN OIL, INC.
El Paso Natural Gas Company

3. ADDRESS OF OPERATOR

PO Box 4289, Farmington, NM 87499

4. LOCATION OF WELL (Report location clearly and in accordance with any State requirements.)*

At surface
450'N, 1950'E

At proposed prod. zone

14. DISTANCE IN MILES AND DIRECTION FROM NEAREST TOWN OR POST OFFICE*

5 miles NE of Navajo City, NM

15. DISTANCE FROM PROPOSED*

LOCATION TO NEAREST
PROPERTY OR LEASE LINE, FT. 450'

(Also to nearest drig. unit line, if any)
15. DISTANCE FROM PROPOSED LOCATION*
TO NEAREST WELL, DRILLING, COMPLETED, 400
OR APPLIED FOR, ON THIS LEASE, FT.

16. NO. OF ACRES IN LEASE

Unit 2240

17. NO. OF ACRES ASSIGNED

TO THIS WELL 160.00

19. PROPOSED DEPTH

3125'

20. ROTARY OR CABLE TOOLS

Rotary

21. ELEVATIONS (Show whether DF, RT, GR, etc.)

6254' GL

22. APPROX. DATE WORK WILL START*

-

This action is subject to technical and
procedural review pursuant to 43 CFR 3165.2,
and appeal pursuant to 43 CFR 3165.4.

PROPOSED CASING AND CEMENTING PROGRAM

DRILLING OPERATIONS AUTHORIZED ARE
SUBJECT TO COMPLIANCE WITH ATTACHED
"GENERAL REQUIREMENTS"

SIZE OF CASING	WEIGHT PER FOOT	SETTING DEPTH	QUANTITY OF CEMENT
17 1/2"	13 3/8"	54.0#	200'
12 1/4"	9 5/8"	40.0#	3030'
8 3/4"	5 1/2" liner	23.0#	2880-3125'
			278 cf. circulated
			570 cf to cover Ojo Alamo
			do not cement

The Fruitland formation will be completed.

A 3000 psi WP and 6000 psi test double gate preventer equipped with
blind and pipe rams will be used for blow out prevention on this well.

This gas is dedicated.

The NE/4 of Section 26 is dedicated to this well.

IN ABOVE SPACE DESCRIBE PROPOSED PROGRAM: If proposal is to deepen or plug back, give data on present productive zone and proposed new productive zone. If proposal is to drill or deepen directionally, give pertinent data on subsurface locations and measured and true vertical depths. Give blowout preventer program, if any.

24.

SIGNED

[Signature]

TITLE

Drilling Clerk

DATE

10-13-87

(This space for Federal or State office use)

PERMIT NO.

APPROVAL DATE

APPROVED BY

TITLE

DATE

CONDITIONS OF APPROVAL, IF ANY:

Hold 104 for NST
OK EB
NST 2423

NMOCC

*See Instructions On Reverse Side

Title 18 U.S.C. Section 1001, makes it a crime for any person knowingly and willfully to make to any department or agency of the United States any false, fictitious or fraudulent statements or representations as to any matter within its jurisdiction.

RECEIVED
NOV 03 1987

[Signature]
Robert Moore

OIL CONSERVATION DIVISION

STATE OF NEW MEXICO
ENERGY AND MINERALS DEPARTMENTP. O. BOX 2088
SANTA FE, NEW MEXICO 87501Form C-102
Revised 10-1-78

All distances must be from the outer boundaries of the Section.

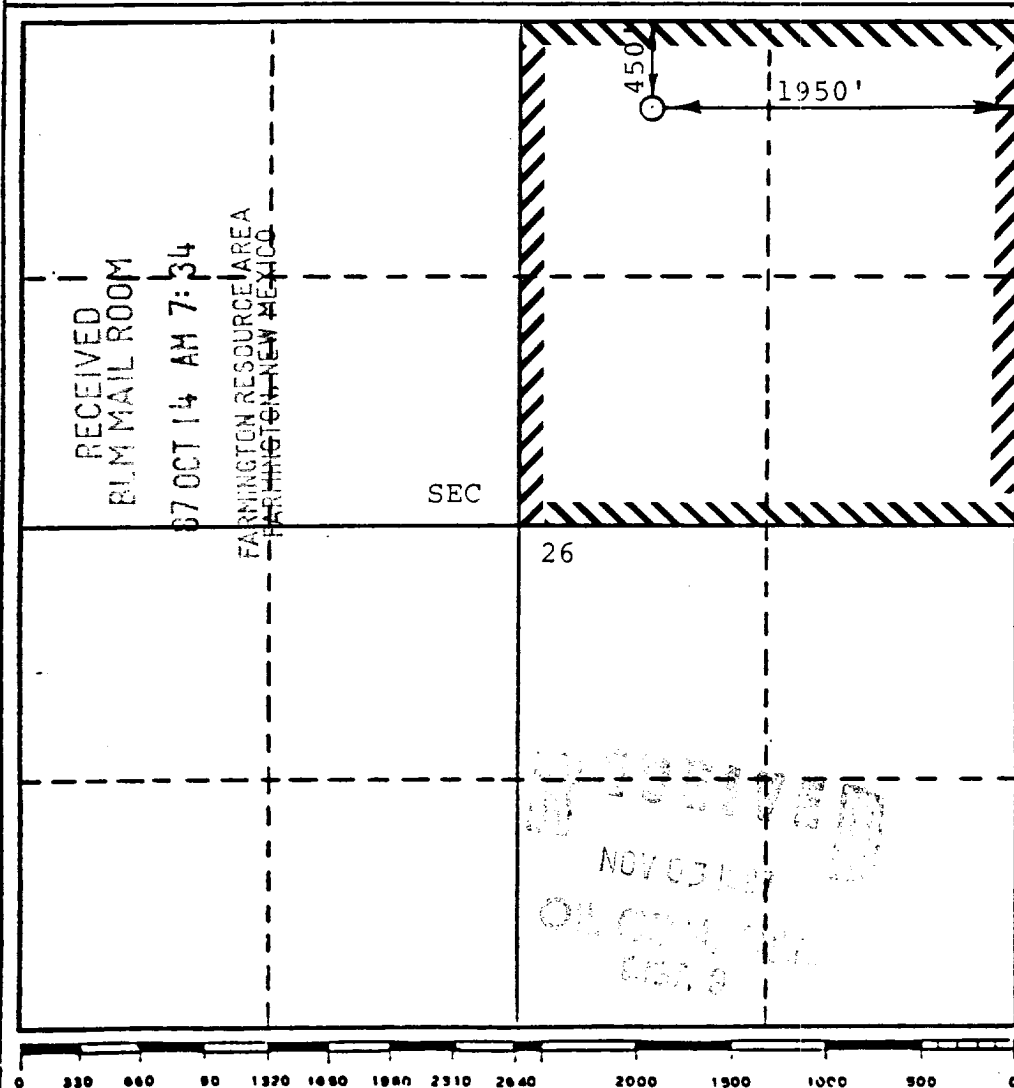
Operator MERIDIAN OIL INC. EL PASO NATURAL GAS COMPANY		Lease SAN JUAN 30-6 UNIT(SF 079383)		Well No. 418
Unit Letter B	Section 26	Township 30-N	Range 7-W	County RIO ARriba
Actual Footage Location of Well: 450 feet from the NORTH line and 1950 feet from the EAST line				
Ground Level Elev. 6254	Producing Formation Fruitland	Pool Undesignated	Dedicated Acreage: 160 Acres	

1. Outline the acreage dedicated to the subject well by colored pencil or hatchure marks on the plat below.
2. If more than one lease is dedicated to the well, outline each and identify the ownership thereof (both as to working interest and royalty).
3. If more than one lease of different ownership is dedicated to the well, have the interests of all owners been consolidated by communitization, unitization, force-pooling, etc?

☒ Yes ☐ No If answer is "yes," type of consolidation unitization

If answer is "no," list the owners and tract descriptions which have actually been consolidated. (Use reverse side of this form if necessary.) _____

No allowable will be assigned to the well until all interests have been consolidated (by communitization, unitization, forced-pooling, or otherwise) or until a non-standard unit, eliminating such interests, has been approved by the Division.



CERTIFICATION

I hereby certify that the information contained herein is true and complete to the best of my knowledge and belief.

Name
Drilling Clerk

Position
El Paso Natural Gas

Company
10-13-87

Date

I hereby certify that the well location shown on this plat was plotted from field notes of actual surveys made by me or under my supervision, and that the same is true and correct to the best of my knowledge and belief.

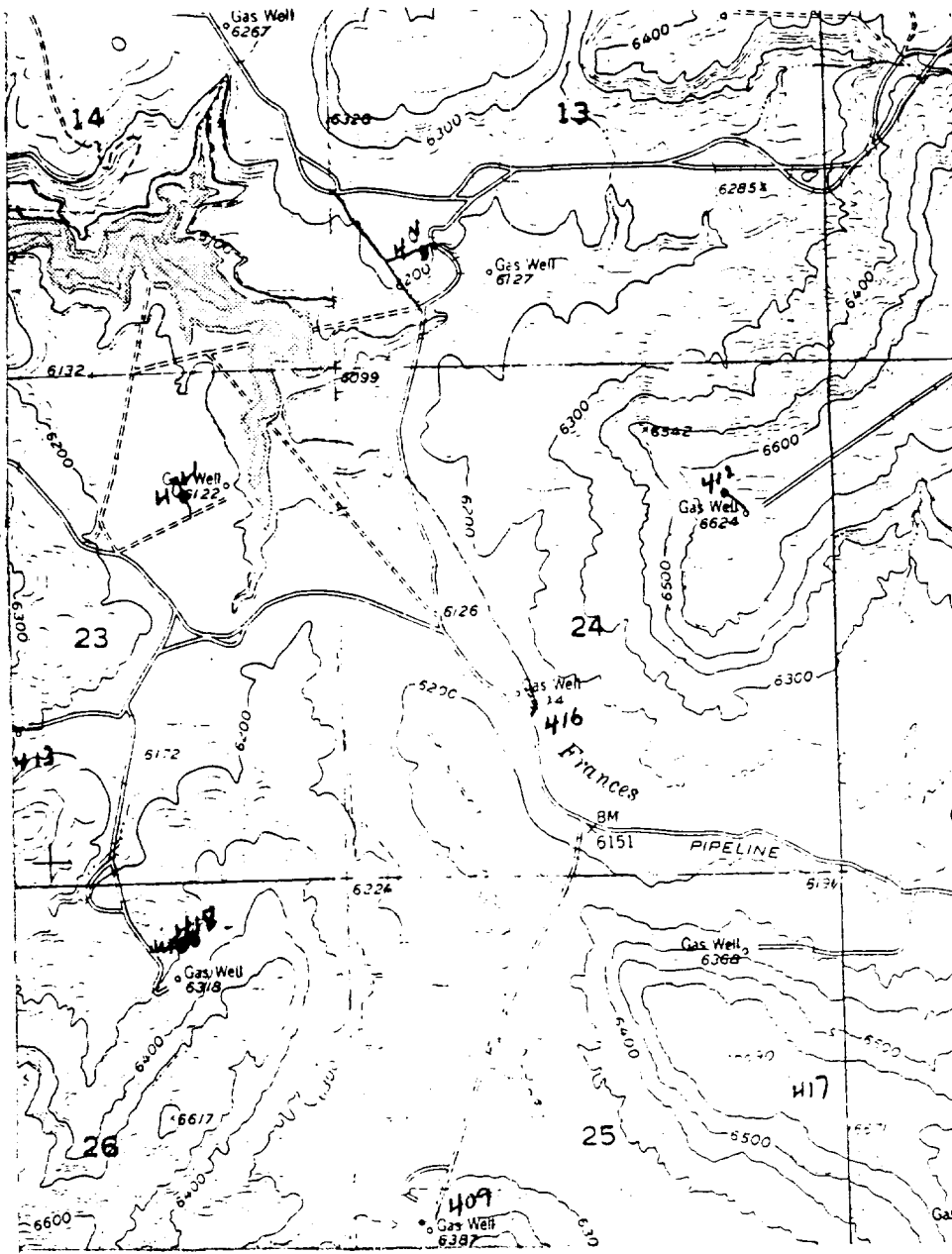
OCTOBER 6, 1987

Date Surveyed
DAVID M. KELSEY

Registered Professional Engineer
and/or Land Surveyor

Certificate No.
5855

San Juan 30-6 Unit 418
NE 26-30-7



Map #2

LEGEND OF RIGHT-OF-WAYS

- EXISTING ROADS
- EXISTING PIPELINES + + +
- EXISTING ROAD & PIPELINE ++++
- PROPOSED ROADS ~~----~~
- PROPOSED PIPELINES
- PROPOSED ROAD & PIPELINE

~~216/43~~

915-688-5286

Country	1950	1960	1970	1980	1990	2000	2010	2020	2030	2040	2050
Japan	7.0	7.5	8.0	9.0	10.0	11.0	12.0	13.0	14.0	15.0	16.0
Germany	10.0	10.5	11.0	12.0	13.0	14.0	15.0	16.0	17.0	18.0	19.0
France	11.0	11.5	12.0	13.0	14.0	15.0	16.0	17.0	18.0	19.0	20.0
Italy	12.0	12.5	13.0	14.0	15.0	16.0	17.0	18.0	19.0	20.0	21.0
Spain	13.0	13.5	14.0	15.0	16.0	17.0	18.0	19.0	20.0	21.0	22.0
Sweden	14.0	14.5	15.0	16.0	17.0	18.0	19.0	20.0	21.0	22.0	23.0
Belgium	15.0	15.5	16.0	17.0	18.0	19.0	20.0	21.0	22.0	23.0	24.0
United Kingdom	16.0	16.5	17.0	18.0	19.0	20.0	21.0	22.0	23.0	24.0	25.0
Canada	17.0	17.5	18.0	19.0	20.0	21.0	22.0	23.0	24.0	25.0	26.0
United States	18.0	18.5	19.0	20.0	21.0	22.0	23.0	24.0	25.0	26.0	27.0
China	19.0	19.5	20.0	21.0	22.0	23.0	24.0	25.0	26.0	27.0	28.0
India	20.0	20.5	21.0	22.0	23.0	24.0	25.0	26.0	27.0	28.0	29.0
South Africa	21.0	21.5	22.0	23.0	24.0	25.0	26.0	27.0	28.0	29.0	30.0
South Korea	22.0	22.5	23.0	24.0	25.0	26.0	27.0	28.0	29.0	30.0	31.0
Poland	23.0	23.5	24.0	25.0	26.0	27.0	28.0	29.0	30.0	31.0	32.0
U.S.S.R.	24.0	24.5	25.0	26.0	27.0	28.0	29.0	30.0	31.0	32.0	33.0
Uganda	25.0	25.5	26.0	27.0	28.0	29.0	30.0	31.0	32.0	33.0	34.0
Kenya	26.0	26.5	27.0	28.0	29.0	30.0	31.0	32.0	33.0	34.0	35.0
Malawi	27.0	27.5	28.0	29.0	30.0	31.0	32.0	33.0	34.0	35.0	36.0
Zambia	28.0	28.5	29.0	30.0	31.0	32.0	33.0	34.0	35.0	36.0	37.0
Sierra Leone	29.0	29.5	30.0	31.0	32.0	33.0	34.0	35.0	36.0	37.0	38.0
Senegal	30.0	30.5	31.0	32.0	33.0	34.0	35.0	36.0	37.0	38.0	39.0
Ghana	31.0	31.5	32.0	33.0	34.0	35.0	36.0	37.0	38.0	39.0	40.0
Guinea	32.0	32.5	33.0	34.0	35.0	36.0	37.0	38.0	39.0	40.0	41.0
Sierra Leone	33.0	33.5	34.0	35.0	36.0	37.0	38.0	39.0	40.0	41.0	42.0
Yemen	34.0	34.5	35.0	36.0	37.0	38.0	39.0	40.0	41.0	42.0	43.0
Yemen	35.0	35.5	36.0	37.0	38.0	39.0	40.0	41.0	42.0	43.0	44.0
Yemen	36.0	36.5	37.0	38.0	39.0	40.0	41.0	42.0	43.0	44.0	45.0
Yemen	37.0	37.5	38.0	39.0	40.0	41.0	42.0	43.0	44.0	45.0	46.0
Yemen	38.0	38.5	39.0	40.0	41.0	42.0	43.0	44.0	45.0	46.0	47.0
Yemen	39.0	39.5	40.0	41.0	42.0	43.0	44.0	45.0	46.0		