



**NEW MEXICO ENERGY, MINERALS  
& NATURAL RESOURCES DEPARTMENT**

OIL CONSERVATION DIVISION  
AZTEC DISTRICT OFFICE  
1000 RIO BRAZOS ROAD  
AZTEC NM 87410  
(505) 334-6178 FAX: (505) 334-6170  
[http://lanmnr.state.nm.us/ocd/District II/3distrct.htm](http://lanmnr.state.nm.us/ocd/District%20II/3distrct.htm)

**MECHANICAL INTEGRITY TEST REPORT**  
(TA or UIC)

Date of Test 5/24/02 Operator Devon Energy API # 30-039-24213

Property Name NEBU Well # 403 Location: Unit H Sec 9 Twn 30 Rge 7

Land Type:  
State   
Federal   
Private \_\_\_\_\_  
Indian \_\_\_\_\_

Well Type:  
Water Injection \_\_\_\_\_  
Salt Water Disposal \_\_\_\_\_  
Gas Injection \_\_\_\_\_  
Producing Oil/Gas \_\_\_\_\_  
Pressure observation

Temporarily Abandoned Well (Y/N): Yes TA Expires: \_\_\_\_\_

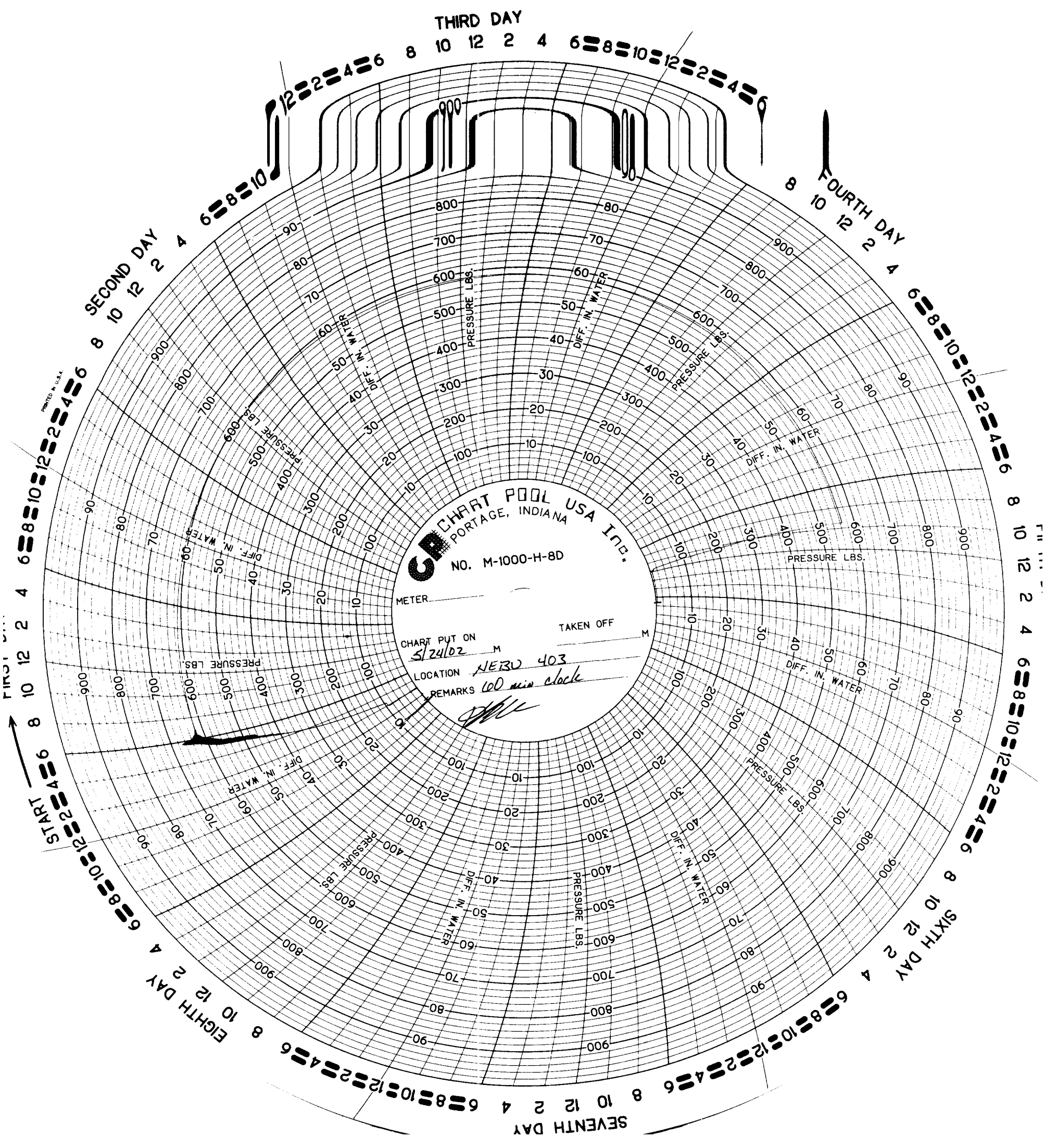
Casing Pres. 0 Tbg. SI Pres. \_\_\_\_\_ Max. Inj. Pres. \_\_\_\_\_  
Bradenhead Pres. 94 Tbg. Inj. Pres. \_\_\_\_\_  
Tubing Pres. 0  
Int. Casing Pres. \_\_\_\_\_

Pressured annulus up to 620 psi. for 30 mins. Test passed/failed

REMARKS:  
Pressured up to 620 psig and held for 30 mins. During this time the casing pressure bleed off to 564 psig.

By [Signature]  
(Operator Representative)  
Keith Administrator  
(Position)

Witness \_\_\_\_\_  
(NMOCD)



THIRD DAY

FOURTH DAY

SECOND DAY

CPC CHART POOL USA INC.  
PORTAGE, INDIANA  
NO. M-1000-H-8D

METER \_\_\_\_\_  
CHART PUT ON 5/24/02 M  
LOCATION NERU 403  
REMARKS 100 min clock  
*[Signature]*

TAKEN OFF \_\_\_\_\_ M

FIRST DAY

START

EIGHTH DAY

SEVENTH DAY

SIXTH DAY

PRINTED IN U.S.A.