

UNITED STATES
DEPARTMENT OF THE INTERIOR
BUREAU OF LAND MANAGEMENT

RECEIVED
MAIL ROOM

APPLICATION FOR PERMIT TO DRILL, DEEPEN, OR PLUG BACK

1A. TYPE OF WORK

DRILL ☒

DEEPEN ☐

PLUG BACK ☐

B. TYPE OF WELL

OIL
WELL ☐

GAS
WELL ☒

OTHER ☐

2. NAME OF OPERATOR NEERIDIAN OIL, INC.
El Paso Natural Gas Company

3. ADDRESS OF OPERATOR
PO Box 4289, Farmington, NM 87499

4. LOCATION OF WELL (Report location clearly and in accordance with any State requirements.)
At surface 1515'N, 960'E
At proposed prod. zone

14. DISTANCE IN MILES AND DIRECTION FROM NEAREST TOWN OR POST OFFICE*

8 miles from Navajo Dam

15. DISTANCE FROM PROPOSED*
LOCATION TO NEAREST
PROPERTY OR LEASE LINE, FT. 960'
(Also to nearest drig. unit line, if any)

16. NO. OF ACRES IN LEASE
Unit 800

17. NO. OF ACRES ASSIGNED
TO THIS WELL 160.00

18. DISTANCE FROM PROPOSED LOCATION*
TO NEAREST WELL, DRILLING, COMPLETED,
OR APPLIED FOR, ON THIS LEASE, FT. 400'

19. PROPOSED DEPTH
3135'

20. ROTARY OR CABLE TOOLS
Rotary

21. ELEVATIONS (Show whether DF, RT, GR, etc.)
6282'GL

22. APPROX. DATE WORK WILL START*

23. PROPOSED CASING AND CEMENTING PROGRAM

SIZE OF HOLE	SIZE OF CASING	WEIGHT PER FOOT	SETTING DEPTH	QUANTITY OF CEMENT
12 1/4"	9 5/8"	32.3#	200'	130 cf. circulated
8 3/4"	7"	20.0#	2970'	940 cf circ. surface
6 1/4"	5 1/2" liner	23.0#	3135'	do not cement

The Fruitland formation will be completed.

A 3000 psi WP and 6000 psi test double gate preventer equipped with blind and pipe rams will be used for blow out prevention on this well.

This gas is dedicated.

The NE/4 of Section 7 is dedicated to this well.

RECEIVED
JUN 4 1988
OIL CON. DIV.
DIST. 3

IN ABOVE SPACE DESCRIBE PROPOSED PROGRAM: If proposal is to deepen or plug back, give data on present productive zone and proposed new productive zone. If proposal is to drill or deepen directionally, give pertinent data on subsurface locations and measured and true vertical depths. Give blowout preventer program, if any.

24.

SIGNED [Signature] TITLE Drilling Clerk DATE 05-03-88

(This space for Federal or State office use)

PERMIT NO. _____ APPROVAL DATE _____

APPROVED BY _____ TITLE _____ DATE JUN 10 1988

CONDITIONS OF APPROVAL, IF ANY:

NMOCC

AREA MANAGER

*See Instructions On Reverse Side

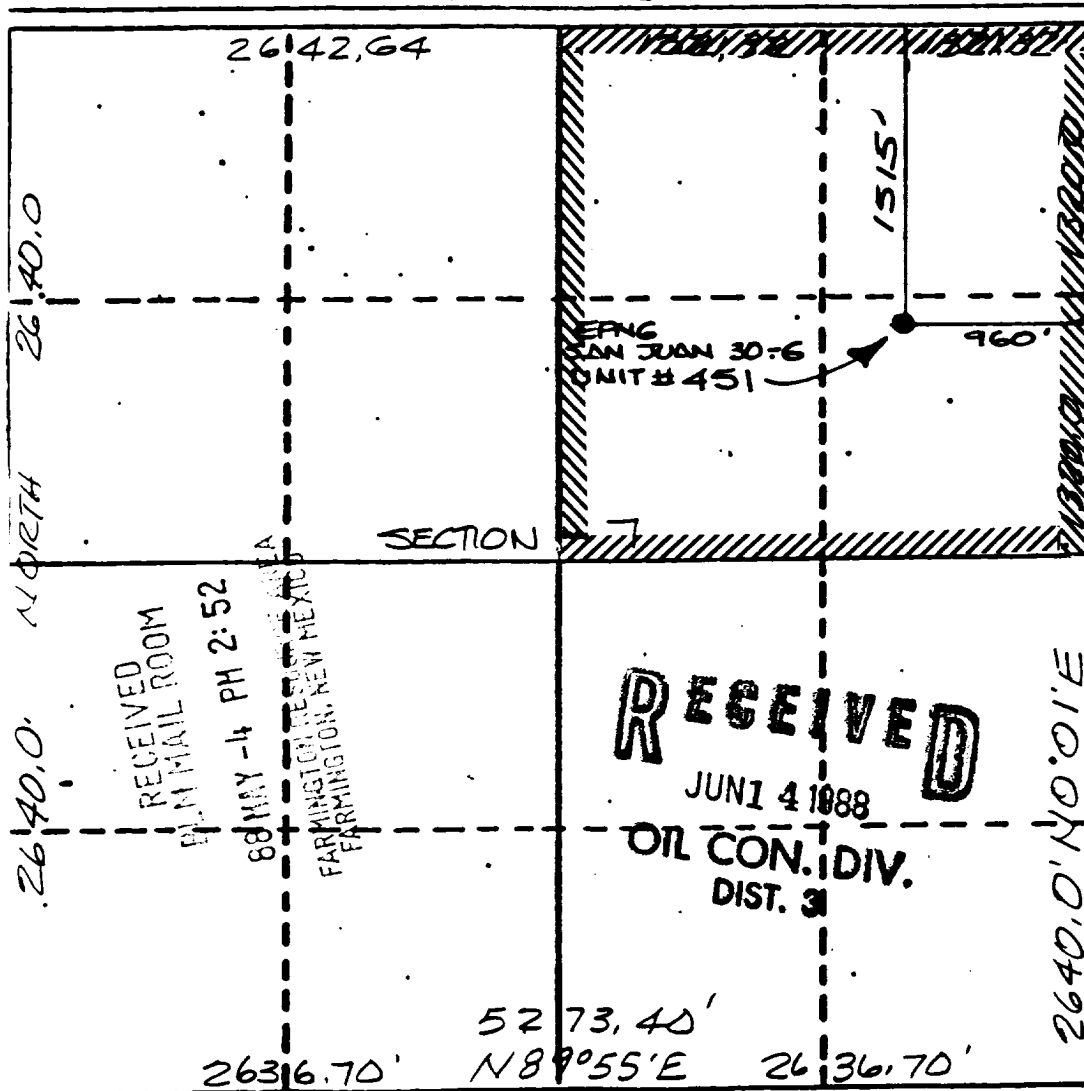
**Supersede C-120
Effective 1-4-68**

Operator El Paso Natural Gas Company <i>MONTICORN OIL, INC.</i>		Lease EPNG SAN JUAN 30-6 (SF-079002)		Well No. 451
Well Letter H	Section 7	Township 30 NORTH	Range 6 WEST	County RIO ARRIBA
Actual Footage Location of Well				
1515	feet from the	NORTH	line and	960
			feet from the	EAST
Ground Level Elev. 6282	Producing Formation Fruitland <i>COAL</i>		Pool Undesignated	Dedicated Acres 160
				Acres

- ☒ Yes ☐ No If answer is "yes," type of consolidation unitization

No allowable will be assigned to the well until all interests have been consolidated (by communitization, unitization, forced-pooling, or otherwise) or until a non-standard unit, eliminating such interests, has been approved by the Commission.

589° 58'E 5285 28'



I hereby certify that the information contained herein is true and complete to the best of my knowledge and belief.

Seamus L. Oak

1

- Drilling Clerk

Position

El Paso Natural Gas Co

Company

۵-۳-۸۸

De

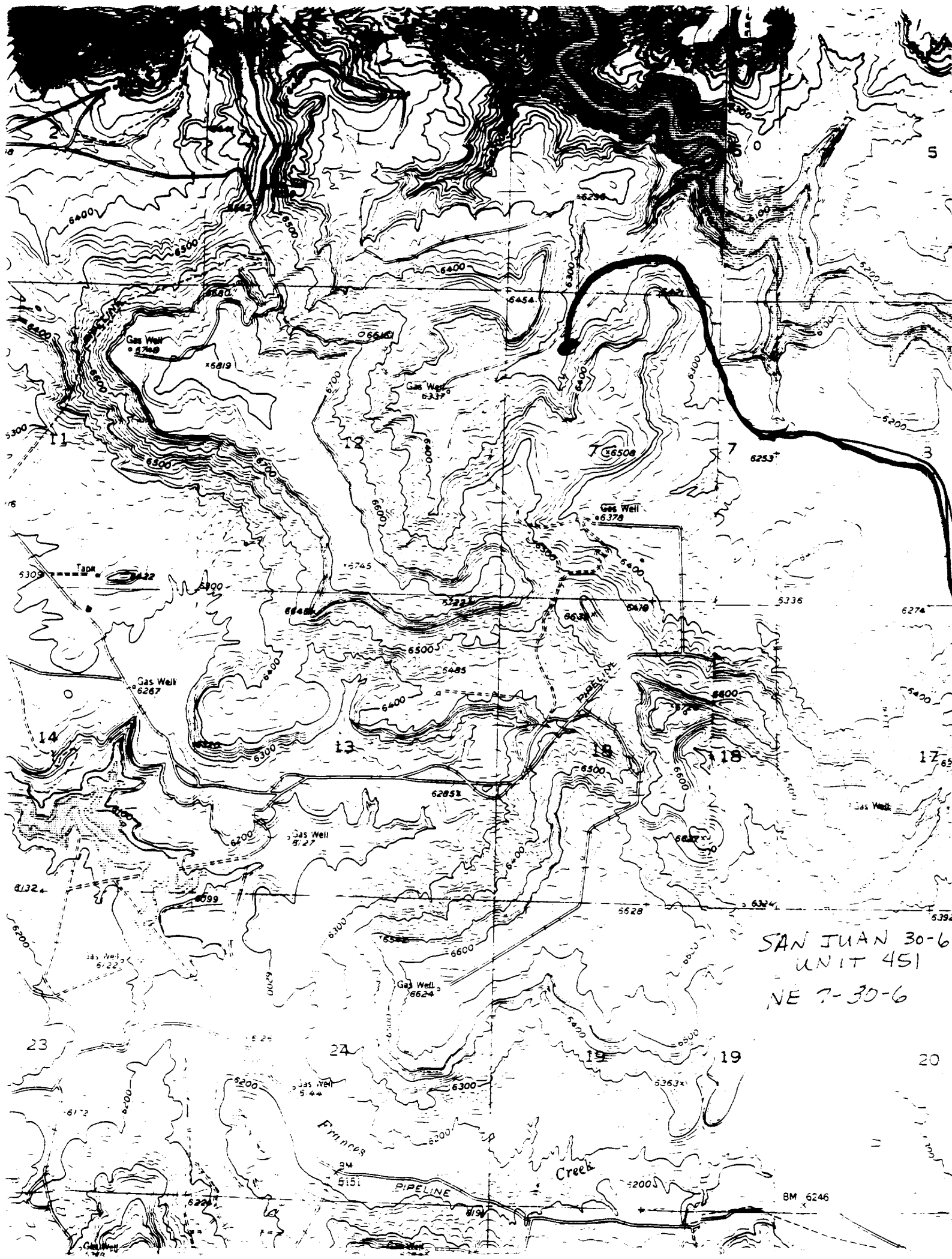
I hereby certify that the well location shown on this plot was plotted from field notes of actual surveys made by me or under my supervision and that the same is true and correct to the best of my knowledge.

15857
Date Returned
APR 24 1988

Registered Professional Engineer
and/or Land Surveyor

NEALE C. EDWARDS

Contract No.



SAN JUAN 30-6
UNIT 451
NE 7-30-6

BM 6246