

UNITED STATES
DEPARTMENT OF THE INTERIOR
BUREAU OF LAND MANAGEMENT

APPLICATION FOR PERMIT TO DRILL, DEEPEN, OR PLUG BACK

1a. TYPE OF WORK

DRILL ☒

DEEPEN ☐

PLUG BACK ☐

b. TYPE OF WELL

OIL
WELL ☐

GAS
WELL ☒

OTHER

2. NAME OF OPERATOR

NEW MEXICAN OIL, INC.
El Paso Natural Gas Company

3. ADDRESS OF OPERATOR

PO Box 4289, Farmington, NM 87499

4. LOCATION OF WELL (Report location clearly and in accordance with any State requirements.)*

At 1530'S, 1830'W

At proposed prod. zone

14. DISTANCE IN MILES AND DIRECTION FROM NEAREST TOWN OR POST OFFICE*

8 miles from Navajo Dam

15. DISTANCE FROM PROPOSED*

LOCATION TO NEAREST
PROPERTY OR LEASE LINE, FT. 1530'
(Also to nearest drig. unit line, if any)

18. DISTANCE FROM PROPOSED LOCATION*

TO NEAREST WELL, DRILLING, COMPLETED, 400'
OR APPLIED FOR, ON THIS LEASE, FT.

16. NO. OF ACRES IN LEASE

Unit 480

19. PROPOSED DEPTH

3233'

17. NO. OF ACRES ASSIGNED
TO THIS WELL

160.00

20. ROTARY OR CABLE TOOLS

Rotary

21. ELEVATIONS (Show whether DF, RT, GR, etc.)

6365' GL

22. APPROX. DATE WORK WILL START*

23. PROPOSED CASING AND CEMENTING PROGRAM

SIZE OF HOLE	SIZE OF CASING	WEIGHT PER FOOT	SETTING DEPTH	QUANTITY OF CEMENT
12 1/4"	9 5/8"	32.3#	200'	130 cf. circulated
8 3/4"	7"	20.0#	3090'	980 cf circ. surface
6 1/4"	5 1/2" liner	23.0#	3233'	do not cement

The Fruitland formation will be completed.

A 3000 psi WP and 6000 psi test double gate preventer equipped with blind and pipe rams will be used for blow out prevention on this well.

This gas is dedicated.

The NW 1/4 of Section 7 is dedicated to this well.

RECEIVED

JUN 06 1988

OIL CON. DIV.

IN ABOVE SPACE DESCRIBE PROPOSED PROGRAM: If proposal is to deepen or plug back, give data on present productive zone and proposed new productive zone. If proposal is to drill or deepen directionally, give pertinent data on subsurface locations and measured and true vertical depths. Give blowout preventer program, if any.

24. SIGNED [Signature] TITLE Drilling Clerk DATE 05-03-88

(This space for Federal or State office use)

PERMIT NO. _____ APPROVAL DATE _____

APPROVED BY _____ TITLE _____

CONDITIONS OF APPROVAL, IF ANY:

NMOCC

*See Instructions On Reverse Side

AREA MANAGER

Form C-104
Supersedes C-120
Effective 1-4-66

Operation MERIDIAN OIL INC. El Paso Natural Gas Company	Lease SAN JUAN 30-6 (NM-03403)	Well No. 450
---	-----------------------------------	-----------------

Actual Footage Location of Wells

1. Outline the acreage dedicated to the subject well by colored pencil or hatchure marks on the plat below.

- ☒ Yes ☐ No If answer is "yes," type of consolidation unitization .

No allowable will be assigned to the well until all interests have been consolidated (by communitization, unitization, forced-pooling, or otherwise) or until a non-standard unit, eliminating such interests, has been approved by the Commission.

CERTIFICATION

I hereby certify that the information contained herein is true and complete to the best of my knowledge and belief.

Seamus L. Leah

Drilling Clerk

Position	El Paso Natural Gas Co
-----------------	------------------------

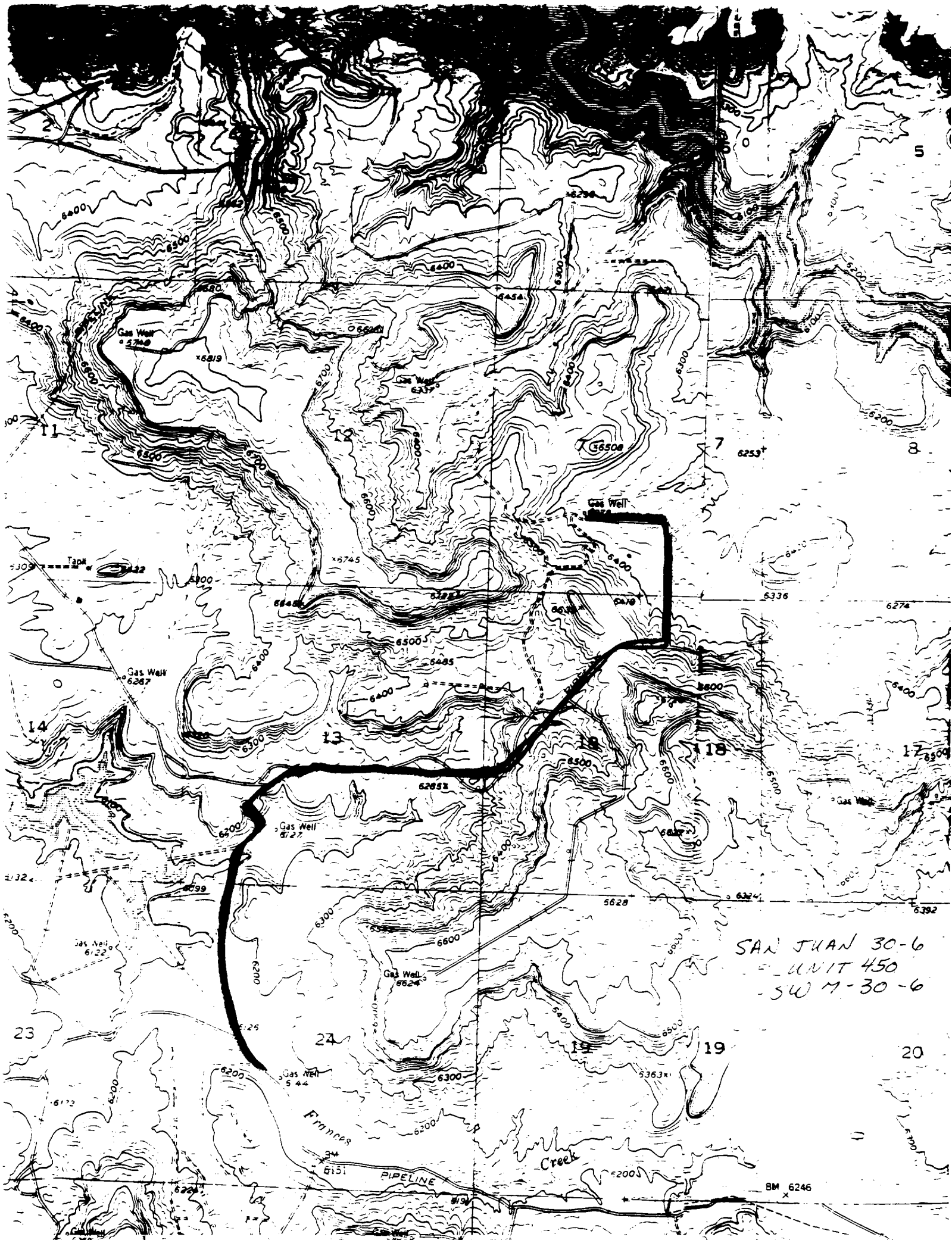
Company

1

I hereby certify that the well location shown on this plot was plotted from field notes of actual surveys made by me or under my supervision. **FORWARD** and the same is true and correct to the best of my knowledge and belief.

6857-0
Date Surveyed
APRIL 14, 1988
Registered Professional Engineer
and/or Land Surveyor

NEALE C. EDWARDS



10-10-30-6

M-7-30-2

J-7-25-7

M-18-3270

F-22-30-8