

UNITED STATES  
DEPARTMENT OF THE INTERIOR  
BUREAU OF LAND MANAGEMENT

RECEIVED  
MAIL ROOM

APPLICATION FOR PERMIT TO DRILL, DEEPEN, OR PLUG BACK

1a. TYPE OF WORK

DRILL ☒

DEEPEN ☐

PLUG BACK ☐

b. TYPE OF WELL

OIL  
WELL ☐

GAS  
WELL ☒

OTHER ☐

2. NAME OF OPERATOR

MERIDIAN OIL INC.  
El Paso Natural Gas Company

3. ADDRESS OF OPERATOR

PO Box 4289, Farmington, NM 87499

4. LOCATION OF WELL (Report location clearly and in accordance with any State requirements.)\*

At "H" 1455'S, 1455'W  
1450 1460  
At proposed prod. zone

14. DISTANCE IN MILES AND DIRECTION FROM NEAREST TOWN OR POST OFFICE\*

2 miles from Navajo City, NM

10. DISTANCE FROM PROPOSED\*

LOCATION TO NEAREST  
PROPERTY OR LEASE LINE, FT. 1455'  
(Also to nearest drig. unit line, if any)

16. NO. OF ACRES IN LEASE

Unit 640

17. NO. OF ACRES ASSIGNED

TO THIS WELL 160.00

13. DISTANCE FROM PROPOSED LOCATION\*

TO NEAREST WELL, DRILLING, COMPLETED, 500'  
OR APPLIED FOR, ON THIS LEASE, FT.

19. PROPOSED DEPTH

3164'

20. ROTARY OR CABLE TOOLS

Rotary

21. ELEVATIONS (Show whether DF, RT, GR, etc.)

6321' GL This action is subject to technical and  
procedural review pursuant to 43 CFR 3165.3  
and appeal pursuant to 43 CFR 3165.4

22. APPROX. DATE WORK WILL START\*

23. DRILLING AND CEMENTING PROGRAM

DRILLING OPERATIONS AUTHORIZED ARE  
SUBJECT TO COMPLIANCE WITH ATTACHED  
"GENERAL REQUIREMENTS"

SIZE OF HOLE	SIZE OF CASING	WEIGHT PER FOOT	SETTING DEPTH	QUANTITY OF CEMENT
12 1/4"	9 5/8"	32.3#	200'	130 cf. circulated
8 3/4"	7"	20.0#	3028'	960 cf circ. surface
6 1/4"	5 1/2" liner	23.0#	3164'	do not cement

The Fruitland formation will be completed.

A 3000 psi WP and 6000 psi test double gate preventer equipped with  
blind and pipe rams will be used for blow out prevention on this well.

This gas is dedicated.

The SW/4 of Section 33 is dedicated to this well.

RECEIVED  
JUL 05 1988  
OIL CON. DIV.  
DIST. 9

IN ABOVE SPACE DESCRIBE PROPOSED PROGRAM: If proposal is to deepen or plug back, give data on present productive zone. If proposal is to drill or deepen directionally, give pertinent data on subsurface locations and measured and true vertical depths. Give blowout preventer program, if any.

24.

SIGNED

*[Signature]*

TITLE

Drilling Clerk

DATE

05-03-88

(This space for Federal or State office use)

PERMIT NO.

APPROVAL DATE

APPROVED BY

TITLE

DATE

CONDITIONS OF APPROVAL, IF ANY:

WMOCC

\*See Instructions On Reverse Side

# WELL LOCATION AND ACREAGE DEDICATION PLAT

Supplement C-128  
Effective 1-1-88

All distances must be from the outer boundaries of the Section.

Operator <b>MERIDIAN OIL INC.</b>		Lessee <b>EPNG SAN JUAN 30-6 UNIT (NM-02151-B)</b>		Well No. <b>424</b>
Unit Letter <b>K</b>	Section <b>33</b>	Township <b>30 NORTH</b>	Range <b>7 WEST</b>	County <b>RIO ARriba</b>
Actual Footage Location of Wells				
<b>1450</b>	feet from the <b>SOUTH</b>	line and	<b>1460</b>	feet from the <b>WEST</b>
Ground Level Elev. <b>6301</b>	Producing Formation <b>Fruitland Coal</b>	Pool <b>Undesignated</b>	Dedicated Acreage <b>160</b> Acres	

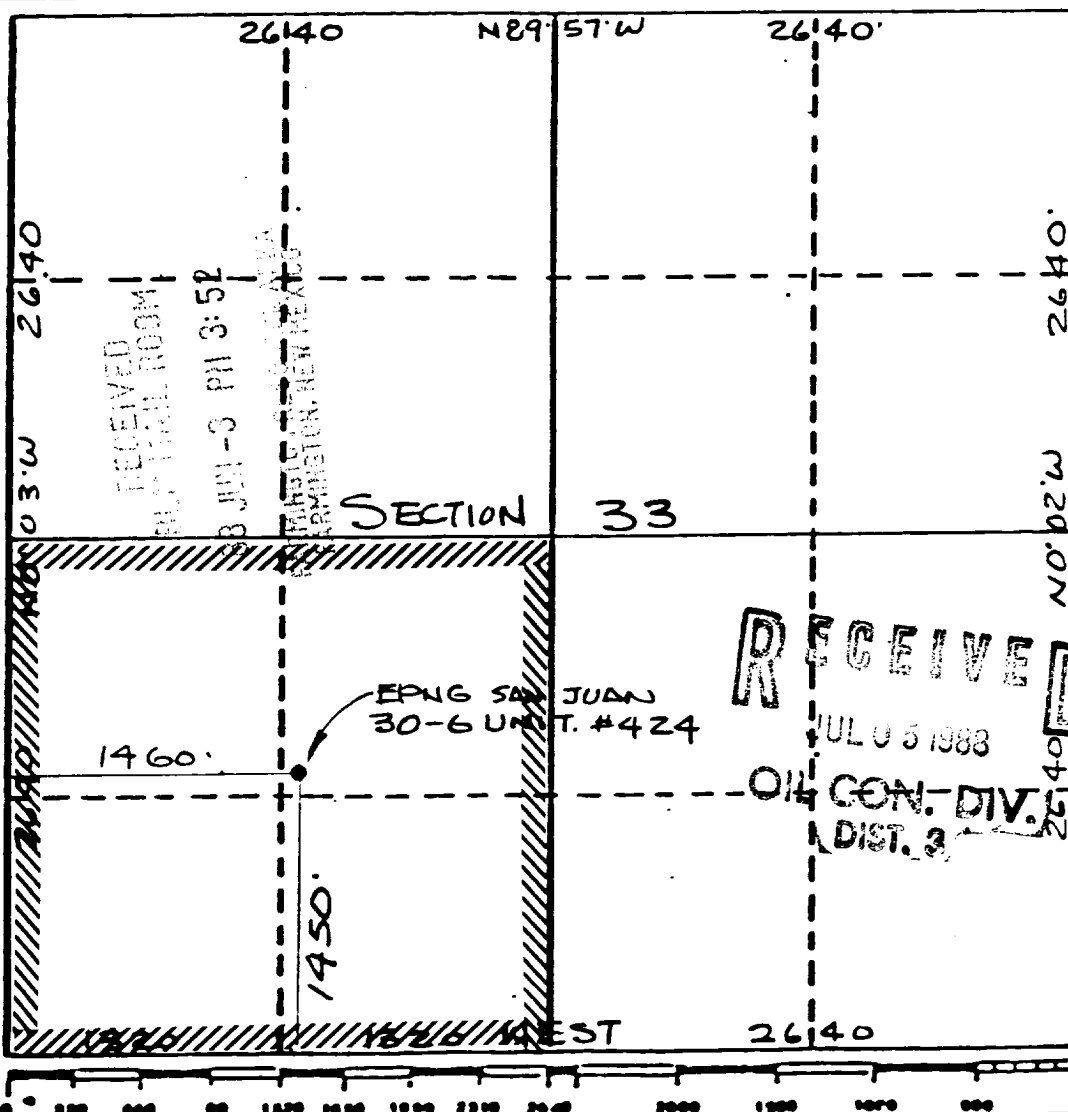
1. Outline the acreage dedicated to the subject well by colored pencil or hatchure marks on the plat below.
2. If more than one lease is dedicated to the well, outline each and identify the ownership thereof (both as to working interest and royalty).
3. If more than one lease of different ownership is dedicated to the well, have the interests of all owners been consolidated by communitization, unitization, force-pooling, etc?

☒ Yes ☐ No If answer is "yes," type of consolidation unitization

If answer is "no," list the owners and tract descriptions which have actually been consolidated. (Use reverse side of this form if necessary.)

No allowable will be assigned to the well until all interests have been consolidated (by communitization, unitization, forced-pooling, or otherwise) or until a non-standard unit, eliminating such interests, has been approved by the Commission.

Reissued to show moved location 5-16-88



## CERTIFICATION

I hereby certify that the information contained herein is true and complete to the best of my knowledge and belief.

Name Drilling Clerk  
Position El Paso Natural Gas Co  
Company EP  
Date

**NEALE C. EDWARDS**  
**REGISTERED PROFESSIONAL ENGINEER AND LAND SURVEYOR**  
**NEW MEXICO**  
**6857**

Date Surveyed **MAY 16, 1988**  
Registered Professional Engineer and/or Land Surveyor

**NEALE C. EDWARDS**

Certificate No. **6857**

