

UNITED STATES
DEPARTMENT OF THE INTERIOR
BUREAU OF LAND MANAGEMENT

APPLICATION FOR PERMIT TO DRILL, DEEPEN, OR PLUG BACK

1a. TYPE OF WORK

DRILL ☒

DEEPEN ☐

PLUG BACK ☐

b. TYPE OF WELL

OIL
WELL ☒

GAS
WELL ☐

OTHER

SINGLE
ZONE ☒

MULTIPLE
ZONE ☐

2. NAME OF OPERATOR

MERIDIAN OIL, INC.

El Paso Natural Gas Company

3. ADDRESS OF OPERATOR

PO Box 4289, Farmington, NM 87499

4. LOCATION OF WELL (Report location clearly and in accordance with any State requirements.)

At surface

1450'S, 1635'W

At proposed prod. zone

14. DISTANCE IN MILES AND DIRECTION FROM NEAREST TOWN OR POST OFFICE*

18 miles from Gobernador, NM

10. DISTANCE FROM PROPOSED*

LOCATION TO NEAREST
PROPERTY OR LEASE LINE, FT.
(Also to nearest drig. unit line, if any)

1450'

16. NO. OF ACRES IN LEASE

Unit 1200

17. NO. OF ACRES ASSIGNED
TO THIS WELL

160.00

18. DISTANCE FROM PROPOSED LOCATION*

TO NEAREST WELL, DRILLING, COMPLETED
OR APPLIED FOR, ON THIS LEASE, FT.

1200'

19. PROPOSED DEPTH

3601'

20. ROTARY OR CABLE TOOLS

Rotary

21. ELEVATIONS (Show whether DF, RT, GR, etc.)

6656' GL

SUBJECT TO EXAMINATION WITH ATTACHED

"GENERAL REQUIREMENTS"

22. APPROX. DATE WORK WILL START*

23.

PROPOSED CASING AND CEMENTING PROGRAM

proposed casing and cementing program and
and appeal pursuant to 43 CFR 3165.3
and appeal pursuant to 43 CFR 3165.4.

| SIZE OF HOLE | SIZE OF CASING | WEIGHT PER FOOT | SETTING DEPTH | QUANTITY OF CEMENT |
|--------------|----------------|-----------------|---------------|----------------------|
| 12 1/4" | 9 5/8" | 32.3# | 200' | 30 cf. circulated |
| 8 3/4" | 7" | 20.0# | 3418' | 080 cf circ. surface |
| 6 1/4" | 5 1/2" liner | 23.0# | 3601' | do not cement |

The Fruitland coal formation will be completed.

A 3000 psi WP and 6000 psi test double gate preventer equipped with
blind and pipe rams will be used for blow out prevention on this well.

This gas is dedicated.

The SW/4 of Section 17 is dedicated to this well.

RECEIVED
JUL 11 1988
OIL CON. DIV.
DIST. 3

IN ABOVE SPACE DESCRIBE PROPOSED PROGRAM: If proposal is to deepen or plug back, give data on present productive zone and proposed new productive zone. If proposal is to drill or deepen directionally, give pertinent data on subsurface locations and measured and true vertical depths. Give blowout preventer program, if any.

24.

SIGNED

[Signature]

TITLE

Drilling Clerk

DATE

05-23-88

(This space for Federal or State office use)

PERMIT NO.

APPROVAL DATE

APPROVED BY

TITLE

DATE

CONDITIONS OF APPROVAL, IF ANY:

*See Instructions On Reverse Side

**NEW MEXICO OIL CONSERVATION COMMISSION
WELL LOCATION AND ACREAGE DEDICATION PLAT**

Form C-122
Supersedes C-120
Effective 1-1-66

All distances must be from the outer boundaries of the Section.

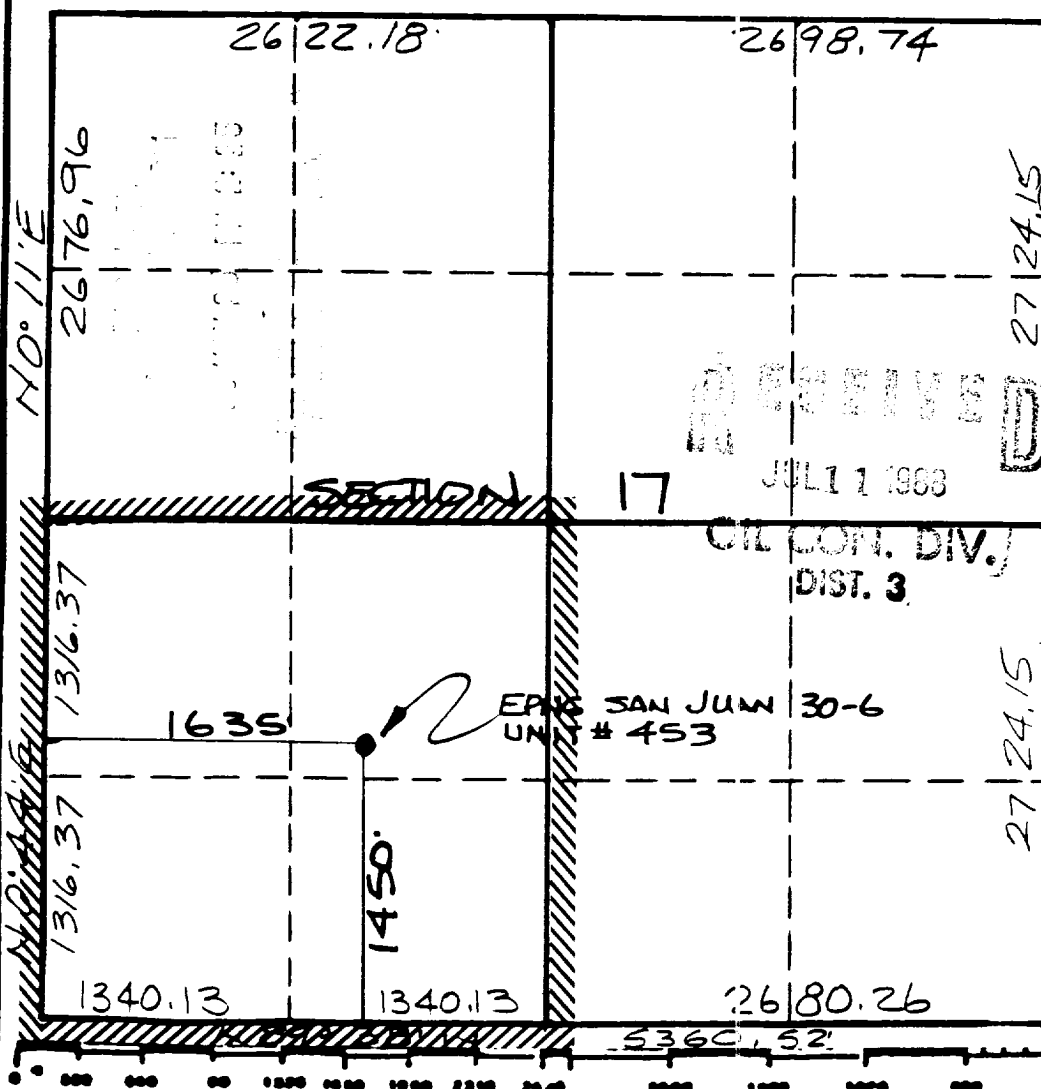
| | | | | | |
|---|--|--------------------------------|---|---------------------------------------|---------------------|
| Operator <u>MERIDIAN OIL INC.</u> El Paso Natural Gas Company | | | Lease <u>SAN JUAN 30-6 Unit(NM-03385)</u> | | Well No. <u>453</u> |
| Unit Letter K | Section 17 | Township 30 NORTH | Range 6 WEST | County RIO ARriba | |
| Actual Footage Location of Well | | | | | |
| 1450 feet from the SOUTH | | 1635 feet from the WEST | | | |
| Ground Level Elev. 6656 | Producing Formation Fruitland Coal | Pool Undesignated | | Dedicated Acreage 160 Acres | |

1. Outline the acreage dedicated to the subject well by colored pencil or hatchure marks on the plat below.
2. If more than one lease is dedicated to the well, outline each and identify the ownership thereof (both as to working interest and royalty).
3. If more than one lease of different ownership is dedicated to the well, have the interests of all owners been consolidated by communization, unitization, force-pooling, etc?

☒ Yes ☐ No If answer is "yes," type of consolidation unitization

If answer is "no," list the owners and tract descriptions which have actually been consolidated. (Use reverse side of this form if necessary.)

No allowable will be assigned to the well until all interests have been consolidated (by communization, unitization, forced-pooling, or otherwise) or until a non-standard unit, eliminating such interests, has been approved by the Commission. S89°46' W S83°06' W



CERTIFICATION

I hereby certify that the information contained herein is true and complete to the best of my knowledge and belief.

[Signature]

Drilling Clerk

Position
El Paso Natural Gas Co.

Company
5-23-88

Date

I hereby certify that the location shown on this plat was determined from field notes of actual survey made by me or under my supervision and that the same is a true and correct statement of my knowledge and belief.



Date Surveyed
APRIL 26, 1988

Registered Professional Engineer
and/or Land Surveyor

NEALE C. EDWARDS

Certificate No.
6857

