

UNITED STATES  
DEPARTMENT OF THE INTERIOR  
BUREAU OF LAND MANAGEMENT

APPLICATION FOR PERMIT TO DRILL, DEEPEN, OR PLUG BACK

1a. TYPE OF WORK

DRILL ☒

DEEPEN ☐

PLUG BACK ☐

b. TYPE OF WELL

OIL  
WELL ☐

GAS  
WELL ☒

OTHER ☐

2. NAME OF OPERATOR

MERIDIAN OIL INC.  
El Paso Natural Gas Company

3. ADDRESS OF OPERATOR

PO Box 4289, Farmington, NM 87499

4. LOCATION OF WELL (Report location clearly and in accordance with any State requirements.)\*

At surface  
900'S, 790'W

At proposed prod. zone

14. DISTANCE IN MILES AND DIRECTION FROM NEAREST TOWN OR POST OFFICE\*

25 miles north of Gobernador, NM

16. DISTANCE FROM PROPOSED\*

LOCATION TO NEAREST  
PROPERTY OR LEASE LINE, FT.  
(Also to nearest drig. unit line, if any) 790'

18. NO. OF ACRES IN LEASE

Unit 9/2.88

17. NO. OF ACRES ASSIGNED

TO THIS WELL 160.00

18. DISTANCE FROM PROPOSED LOCATION\*

TO NEAREST WELL, DRILLING, COMPLETED  
OR APPLIED FOR, ON THIS LEASE, FT. 400'

19. PROPOSED DEPTH

3006'

20. ROTARY OR CABLE TOOLS

Rotary

21. ELEVATIONS (Show whether OF, BT, GR, etc.)

6200' GL

DRILLING OPERATIONS AUTHORIZED ARE  
SUBJECT TO COMPLIANCE WITH ATTACHED

22. APPROX. DATE WORK WILL START\*

This action is subject to technical and  
procedural review pursuant to 43 CFR 3165.3  
and appeal pursuant to 43 CFR 3165.4.

23.

"GENERAL REQUIREMENTS"

SIZE OF HOLE	SIZE OF CASING	WEIGHT PER FOOT	SETTING DEPTH	QUANTITY OF CEMENT
12 1/4"	9 5/8"	32.3#	200'	125 cf. circulated
8 3/4"	7"	20.0#	2859'	209 cf to cover Ojo Alamo
6 1/4"	5 1/2" liner	23.0#	3006'	do not cement

The Fruitland formation will be completed.

A 3000 psi WP and 6000 psi test double gate preventer equipped with  
blind and pipe rams will be used for blow out prevention on this well.

This gas is dedicated.

The SW/4 of Section 12 is dedicated to this well.

RECEIVED  
JUL 14 1988  
OIL CON. DIV.  
DIST 3

IN ABOVE SPACE DESCRIBE PROPOSED PROGRAM: If proposal is to deepen or plug back, give data on present productive zone and proposed new productive zone. If proposal is to drill or deepen directionally, give pertinent data on subsurface locations and measured and true vertical depths. Give blowout preventer program, if any.

24. SIGNED [Signature] TITLE Drilling Clerk DATE 04-16-88

(This space for Federal or State office use)

PERMIT NO. \_\_\_\_\_ APPROVAL DATE \_\_\_\_\_ APPROVED

APPROVED BY \_\_\_\_\_ TITLE \_\_\_\_\_ AS AMENDED

CONDITIONS OF APPROVAL, IF ANY:

DATE JUL 08 1988

NMOCC

\*See Instructions On Reverse Side

AREA MANAGER

# WELL LOCATION AND ACREAGE DEDICATION PLAT

Supersedes C-128  
Effective 1-4-88

All distances must be from the outer boundaries of the Section.

Operator <b>MERIDIAN OIL INC</b> <b>El Paso Natural Gas Company</b>		Lease <b>SAN JUAN 30-6 (SF-080713)</b>		Well No. <b>434</b>
Unit Letter <b>M</b>	Section <b>12 (LOT 5)</b>	Township <b>30 NORTH</b>	Range <b>6 WEST</b>	County <b>RIO ARriba</b>
Actual Footage Location of Well				
900	feet from the	<b>SOUTH</b>	line and	790
				feet from the
				<b>WEST</b>
Ground Level Elev. <b>6200</b>	Producing Formation <b>Fruitland COAL</b>		Pool <b>Undesignated</b>	Dedicated Acreage <b>160</b> <del>177.64</del> Acres

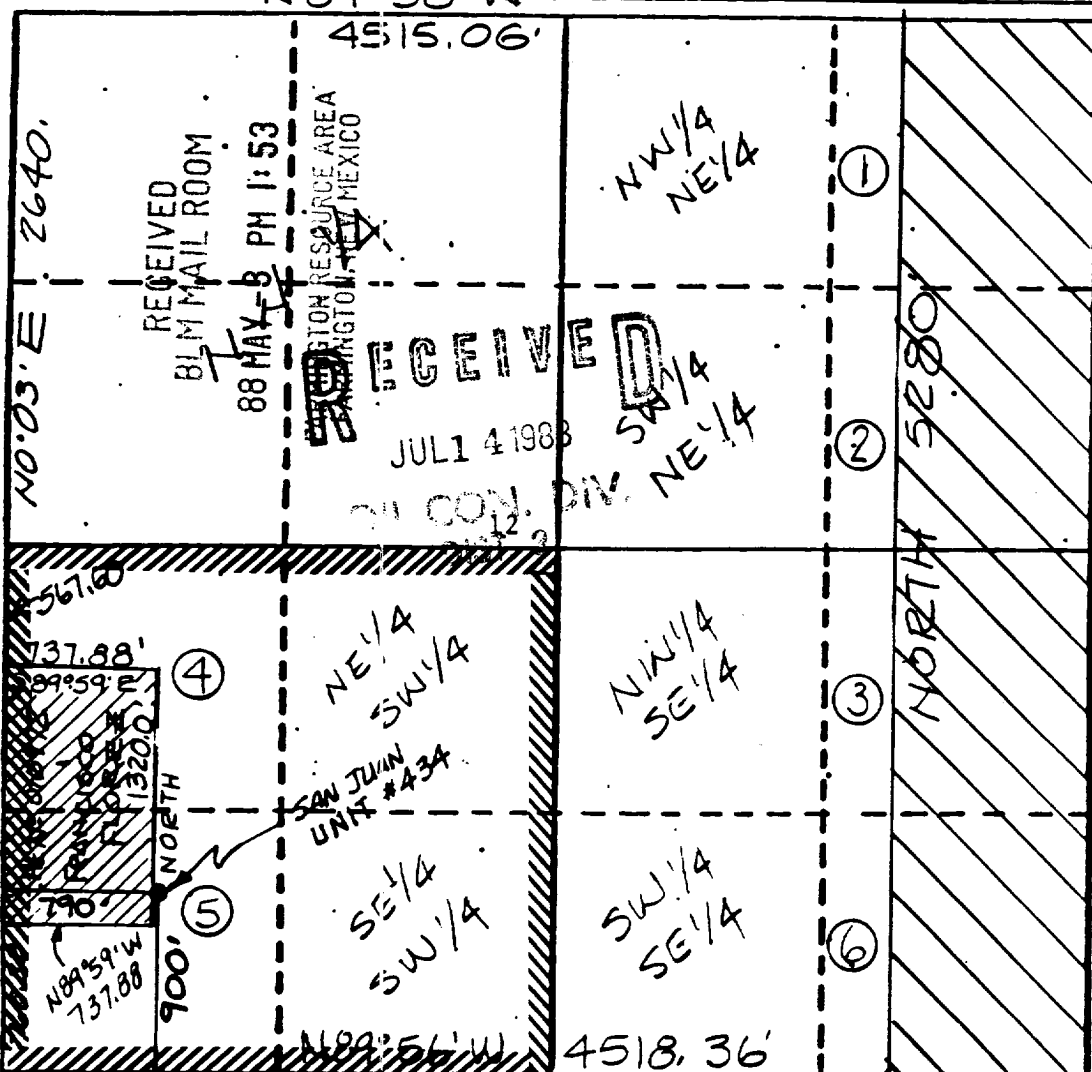
1. Outline the acreage dedicated to the subject well by colored pencil or hachure marks on the plat below.
2. If more than one lease is dedicated to the well, outline each and identify the ownership thereof (both as to working interest and royalty).
3. If more than one lease of different ownership is dedicated to the well, have the interests of all owners been consolidated by communization, unitization, force-pooling, etc?

☒ Yes ☐ No If answer is "yes," type of consolidation unitization

If answer is "no," list the owners and tract descriptions which have actually been consolidated. (Use reverse side of this form if necessary.)

No allowable will be assigned to the well until all interests have been consolidated (by communization, unitization, forced-pooling, or otherwise) or until a non-standard unit, eliminating such interests, has been approved by the Commission.

N 89° 58' W



## CERTIFICATION

I hereby certify that the information contained herein is true and complete to the best of my knowledge and belief.

*[Signature]*

Name  
Drilling Clerk

Position  
El Paso Natural Gas

Company  
5388

Date

I hereby certify that the location shown on this plat was shown from field notes of actual survey made by me or under my supervision, and that the same is true and correct to the best of my knowledge and belief.

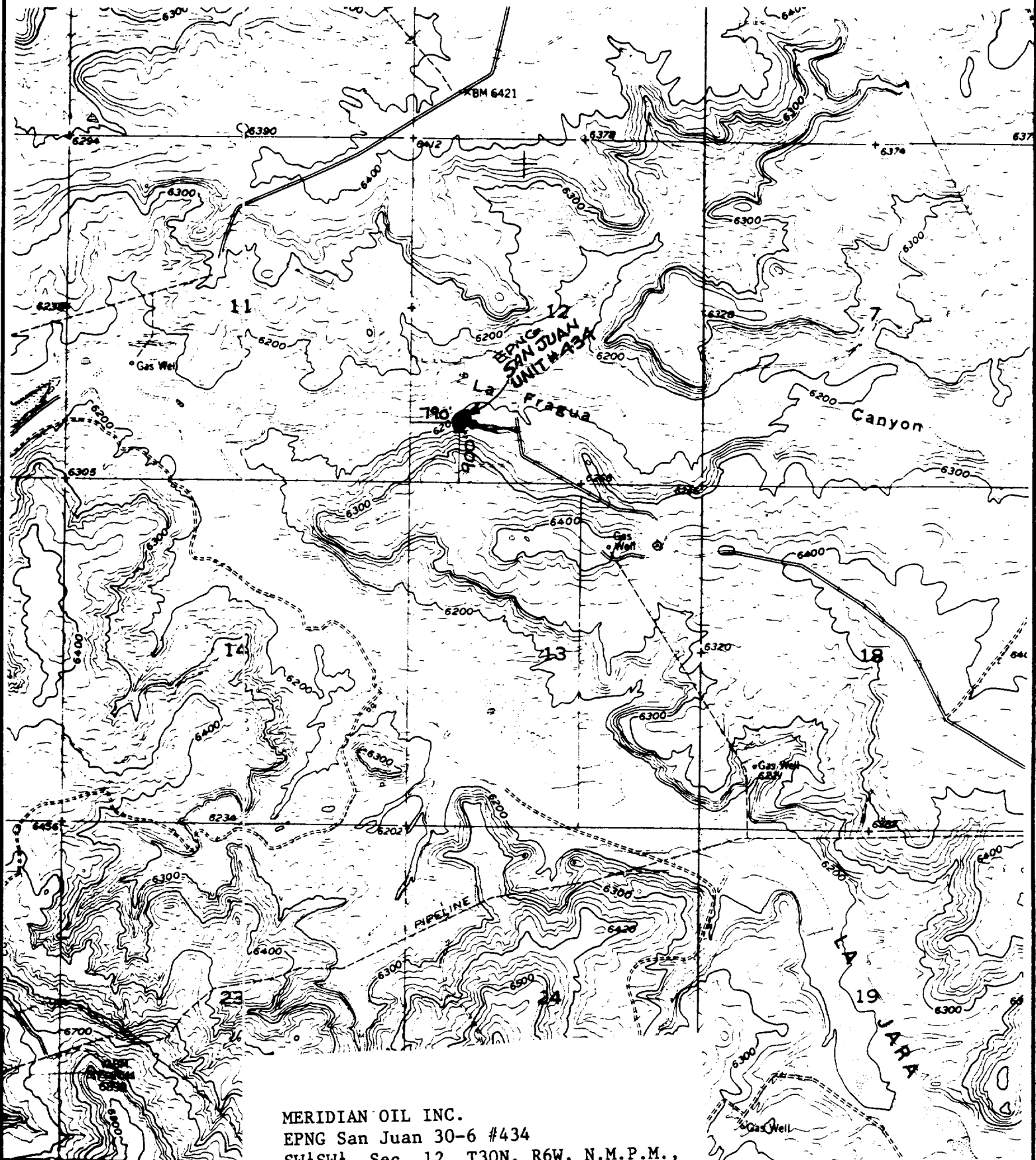
*[Signature]*

Date Surveyed  
APRIL 5, 1988

Registered Professional Engineer  
and/or Land Surveyor

NEALE C. EDWARDS

Certificate No.  
6857



MERIDIAN OIL INC.  
 EPNG San Juan 30-6 #434  
 SW $\frac{1}{4}$ SW $\frac{1}{4}$ , Sec. 12, T30N, R6W, N.M.P.M.,  
 Rio Arriba County, New Mexico