

NEW MEXICO OIL CONSERVATION COMMISSION
WELL LOCATION AND ACREAGE DEDICATION PLAT

Form C-102
Supersedes C-128
Effective 1-1-65

All distances must be from the outer boundaries of the Section.

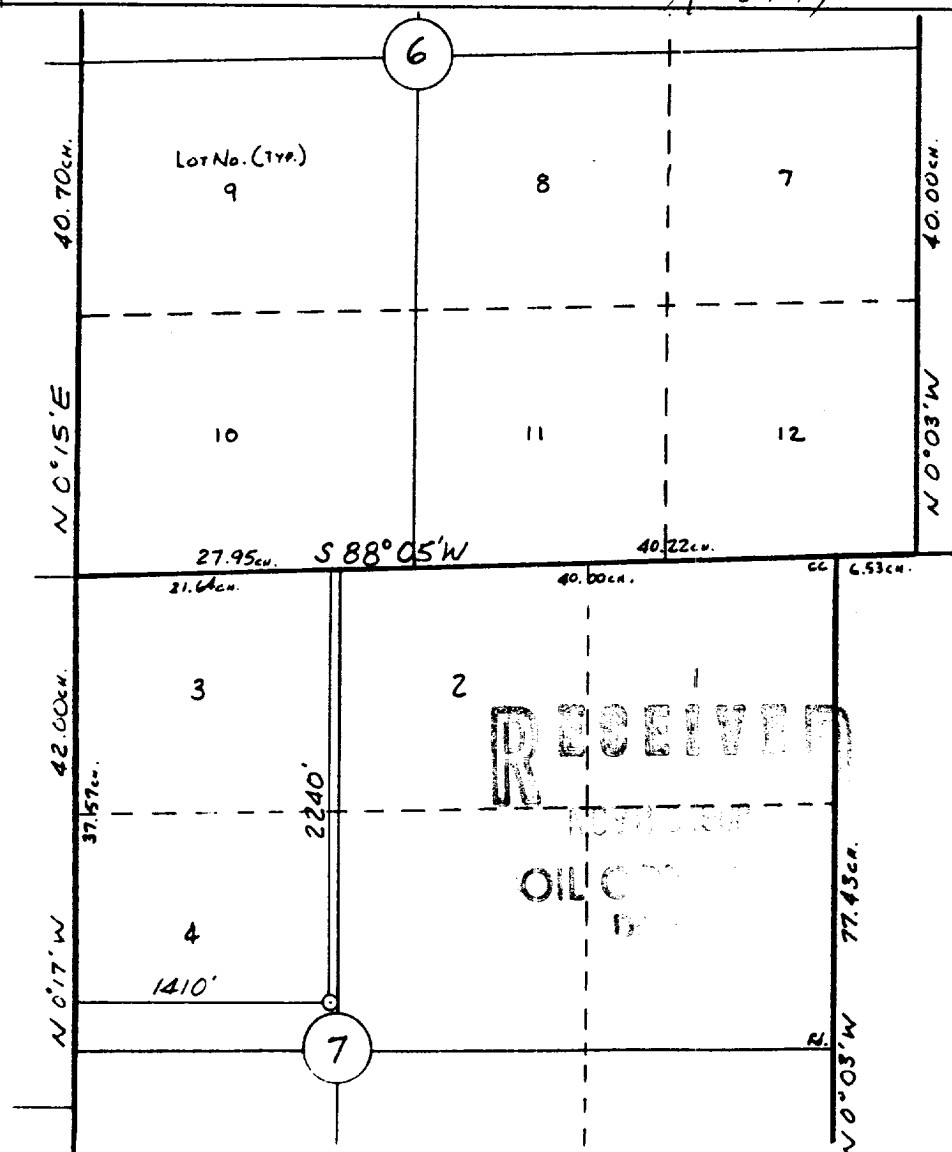
Operator ROBERT L. BAYLESS			Lease JICARILLA 45²		Well No. 8
Unit Letter F	Section 7	Township 30 N	Range 3 W	County RIO ARRIBA	
Actual Footage Location of Well: 2240 feet from the North line and 1410 feet from the West line					
Ground Level Elev. 7074	Producing Formation Pictured Cliffs		Pool East Blanco Pictured Cliffs		Dedicated Acreage: 133.39 Acres

1. Outline the acreage dedicated to the subject well by colored pencil or hachure marks on the plat below.
2. If more than one lease is dedicated to the well, outline each and identify the ownership thereof (both as to working interest and royalty).
3. If more than one lease of different ownership is dedicated to the well, have the interests of all owners been consolidated by communitization, unitization, force-pooling, etc?

☐ Yes ☐ No If answer is "yes," type of consolidation _____

If answer is "no," list the owners and tract descriptions which have actually been consolidated. (Use reverse side of this form if necessary.) _____

No allowable will be assigned to the well until all interests have been consolidated (by communitization, unitization, forced-pooling, or otherwise) or until a non-standard unit, eliminating such interests, has been approved by the Commission.



CERTIFICATION

I hereby certify that the information contained herein is true and complete to the best of my knowledge and belief.

Kevin H. McCord

Name

Kevin H. McCord

Position

Petroleum Engineer

Company

Robert L. Bayless

Date

4/28/88

I hereby certify that the well location shown on this plat was plotted from field notes of actual surveys made by me or under my supervision, and that the same is true and correct to the best of my knowledge and belief.

4-7-88

Date Surveyed

William E. Mahanke II

Registered Professional Engineer and Land Surveyor

#8468

Certificate No.

8468