

UNITED STATES  
DEPARTMENT OF THE INTERIOR  
BUREAU OF LAND MANAGEMENT

RECEIVED

MAIL ROOM

APPLICATION FOR PERMIT TO DRILL, DEEPEN, OR PLUG BACK

1A. TYPE OF WORK

DRILL ☒

DEEPEN ☐

PLUG BACK ☐

B. TYPE OF WELL

OIL  
WELL ☐

GAS  
WELL ☒

OTHER ☐

2. NAME OF OPERATOR

*Meridian Oil Inc.*  
~~El Paso Natural Gas Company~~

3. ADDRESS OF OPERATOR

PO Box 4289, Farmington, NM 87499

4. LOCATION OF WELL (Report location clearly and in accordance with any State requirements.)\*

At ~~mu-sca~~ 1670' N, 845' E

At proposed prod. zone

14. DISTANCE IN MILES AND DIRECTION FROM NEAREST TOWN OR POST OFFICE\*

25 miles from Gobernador, NM

15. DISTANCE FROM PROPOSED\*

LOCATION TO NEAREST  
PROPERTY OR LEASE LINE, FT.  
(Also to nearest drlg. unit line, if any)

845

16. NO. OF ACRES IN LEASE

17. NO. OF ACRES ASSIGNED

TO THIS WELL

160.00

18. DISTANCE FROM PROPOSED LOCATION\*

TO NEAREST WELL, DRILLING, COMPLETED,  
OR APPLIED FOR, ON THIS LEASE, FT.

300'

19. PROPOSED DEPTH

3120'

20. ROTARY OR CABLE TOOLS

Rotary

21. ELEVATIONS (Show whether DF, RT, GR, etc.)

6304' GL

DRILLING OPERATIONS AUTHORIZED ARE  
SUBJECT TO COMPLIANCE WITH ATTACHED  
"GENERAL REQUIREMENTS"

22. APPROX. DATE WORK WILL START\*

23.

PROPOSED CASING AND CEMENTING PROGRAM  
This action is subject to technical and  
procedural review pursuant to 43 CFR 3165.3  
and appeal pursuant to 43 CFR 3165.4.

SIZE OF HOLE	SIZE OF CASING	WEIGHT PER FOOT	SETTING DEPTH	QUANTITY OF CEMENT
12 1/4"	9 5/8"	32.3#	200'	130 cf. circulated
8 3/4"	7"	20.0#	2970'	940 cf circ. surface
6 1/4"	5 1/2" liner	23.0#	3120'	do not cement

The Fruitland coal formation will be completed.

A 3000 psi WP and 6000 psi test double gate preventer equipped with  
blind and pipe rams will be used for blow out prevention on this well.

This gas is dedicated.

The NE/4 of Section 11 is dedicated to this well.

RECEIVED

AUG 15 1988

CON. DIV.

DIST. 3

IN ABOVE SPACE DESCRIBE PROPOSED PROGRAM: If proposal is to deepen or plug back, give data on present productive zone and proposed new productive zone. If proposal is to drill or deepen directionally, give pertinent data on subsurface locations and measured and true vertical depths. Give blowout preventer program, if any.

24.

SIGNED

*[Signature]*

TITLE

Regulatory Affairs

DATE

08-05-88

(This space for Federal or State office use)

PERMIT NO.

APPROVAL DATE

APPROVED BY

TITLE

DATE

CONDITIONS OF APPROVAL, IF ANY:

\*See Instructions On Reverse Side

Title 18 U.S.C. Section 1001, makes it a crime for any person knowingly and willfully to make to any department or agency of the United States any false, fictitious or fraudulent statements or representations as to any matter within its jurisdiction.

# WELL LOCATION AND ACREAGE DEDICATION PLAT

Form 6-108  
Supersedes C-12  
Effective 1-4-88

All distances must be from the outer boundaries of the Section.

Operator <i>El Paso Natural Gas</i>		Lease SAN JUAN 30-6 UNIT(SF-080714)		Well No. 437
Unit Letter H	Section 11	Township 30 NORTH	Range 6 WEST	County RIO ARRIBA
Actual Footage Location of Well				
1670	feet from the NORTH	line and	845	feet from the EAST
Ground Level Elev. 6304	Producing Formation Fruitland Coal	Pool Undesignated	Dedicated Acreage 160	

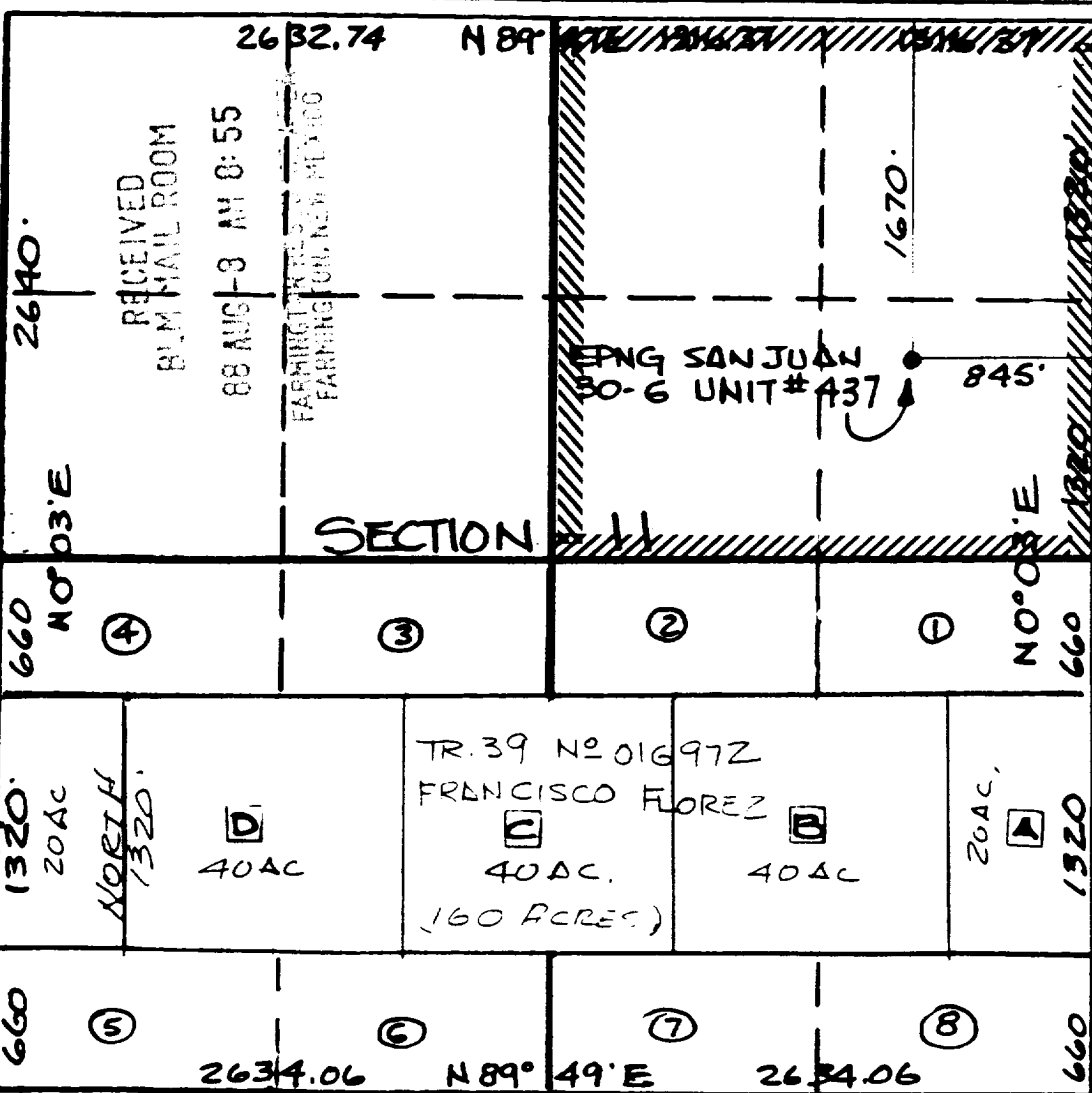
1. Outline the acreage dedicated to the subject well by colored pencil or hatchure marks on the plat below.
2. If more than one lease is dedicated to the well, outline each and identify the ownership thereof (both as to working interest and royalty).
3. If more than one lease of different ownership is dedicated to the well, have the interests of all owners been consolidated by communitization, unitization, force-pooling, etc?

**RECEIVED**  
AUG 5 1988

☒ Yes ☐ No If answer is "yes," type of consolidation unitization **OIL CON. DIV**

If answer is "no," list the owners and tract descriptions which have actually been consolidated. (Use reverse side of this form if necessary.)

No allowable will be assigned to the well until all interests have been consolidated (by communitization, unitization, forced-pooling, or otherwise) or until a non-standard unit, eliminating such interests, has been approved by the Commission.



## CERTIFICATION

I hereby certify that the information contained herein is true and complete to the best of my knowledge and belief.

*[Signature]*  
Name

Drilling Clerk

Position

El Paso Natural Gas Company

Company

*8-8-88*

Date

I hereby certify that the well location shown on this plat was located from field notes of actual survey made by me or under my supervision, and that the same is true and correct to the best of my knowledge and belief.



Date Surveyed

MAY 25, 1988

Registered Professional Engineer and/or Land Surveyor

NEALE C. EDWARDS

Certificate No.

