

UNITED STATES
DEPARTMENT OF THE INTERIOR
BUREAU OF LAND MANAGEMENT

APPLICATION FOR PERMIT TO DRILL, DEEPEN, OR PLUG BACK

1a. TYPE OF WORK
DRILL ☒ DEEPEN ☐ PLUG BACK ☐
b. TYPE OF WELL
OIL WELL ☐ GAS WELL ☒ OTHER ☐
2. NAME OF OPERATOR
El Paso Natural Gas Company
3. ADDRESS OF OPERATOR
PO Box 4289, Farmington, NM 87499
4. LOCATION OF WELL (Report location clearly and in accordance with any State requirements.)
At surface 1190' N, 845' E
At proposed prod. zone 1470' N, 840' E
14. DISTANCE IN MILES AND DIRECTION FROM NEAREST TOWN OR POST OFFICE*
20 miles from Gobernador, NM
15. DISTANCE FROM PROPOSED*
LOCATION TO NEAREST
PROPERTY OR LEASE LINE, FT.
(Also to nearest drig. unit line, if any) 845'
16. NO. OF ACRES IN LEASE
Unit 912.88
17. NO. OF ACRES ASSIGNED
TO THIS WELL E/227.76
18. DISTANCE FROM PROPOSED LOCATION*
TO NEAREST WELL, DRILLING, COMPLETED,
OR APPLIED FOR, ON THIS LEASE, FT. 800'
19. PROPOSED DEPTH 3205'
20. ROTARY OR CABLE TOOLS
Rotary
21. ELEVATIONS (Show whether DF, RT, GR, etc.)
6344' GL
22. APPROX. DATE WORK WILL START*

PROPOSED CASING AND CEMENTING PROGRAM				
SIZE OF HOLE	SIZE OF CASING	WEIGHT PER FOOT	SETTING DEPTH	QUANTITY OF CEMENT
12 1/4"	9 5/8"	32.3#	200'	130 cf. circulated
8 3/4"	7"	20.0#	3050'	960 cf. circ. surface
6 1/4"	5 1/2" liner	23.0#	3205'	do not cement

The Fruitland formation will be completed.

A 3000 psi WP and 6000 psi test double gate preventer equipped with blind and pipe rams will be used for blow out prevention on this well.

This gas is dedicated.

Lots 1,2,3,4 and the W/2 of the E/2 of Section 13 are dedicated to this well.

IN ABOVE SPACE DESCRIBE PROPOSED PROGRAM: If proposal is to deepen or plug back, give data on present productive zone and proposed new productive zone. If proposal is to drill or deepen directionally, give pertinent data on subsurface locations and measured and true vertical depths. Give blowout preventer program, if any.

24. SIGNED [Signature] TITLE Drilling Clerk DATE 05-02-88

(This space for Federal or State office use)

PERMIT NO. _____ APPROVAL DATE _____

APPROVED BY _____ TITLE _____ DATE _____
CONDITIONS OF APPROVAL, IF ANY:

*See Instructions On Reverse Side

All distances must be from the outer boundaries of the Section.

Operator El Paso Natural Gas		Lease San Juan 30-6 Unit(SF-080713435)		Well No. 13435
Unit Letter G	Section 13	Township 30 North	Range 6 West	County Rio Arriba
Actual Postage Location of Wells 1490 feet from the North line and 790 feet from the East line				
Ground Level Elev. 6340'	Producing Formation Fruitland Coal	Pool Undesignated	Dedicated Acreage: 160 217.76 Acres	

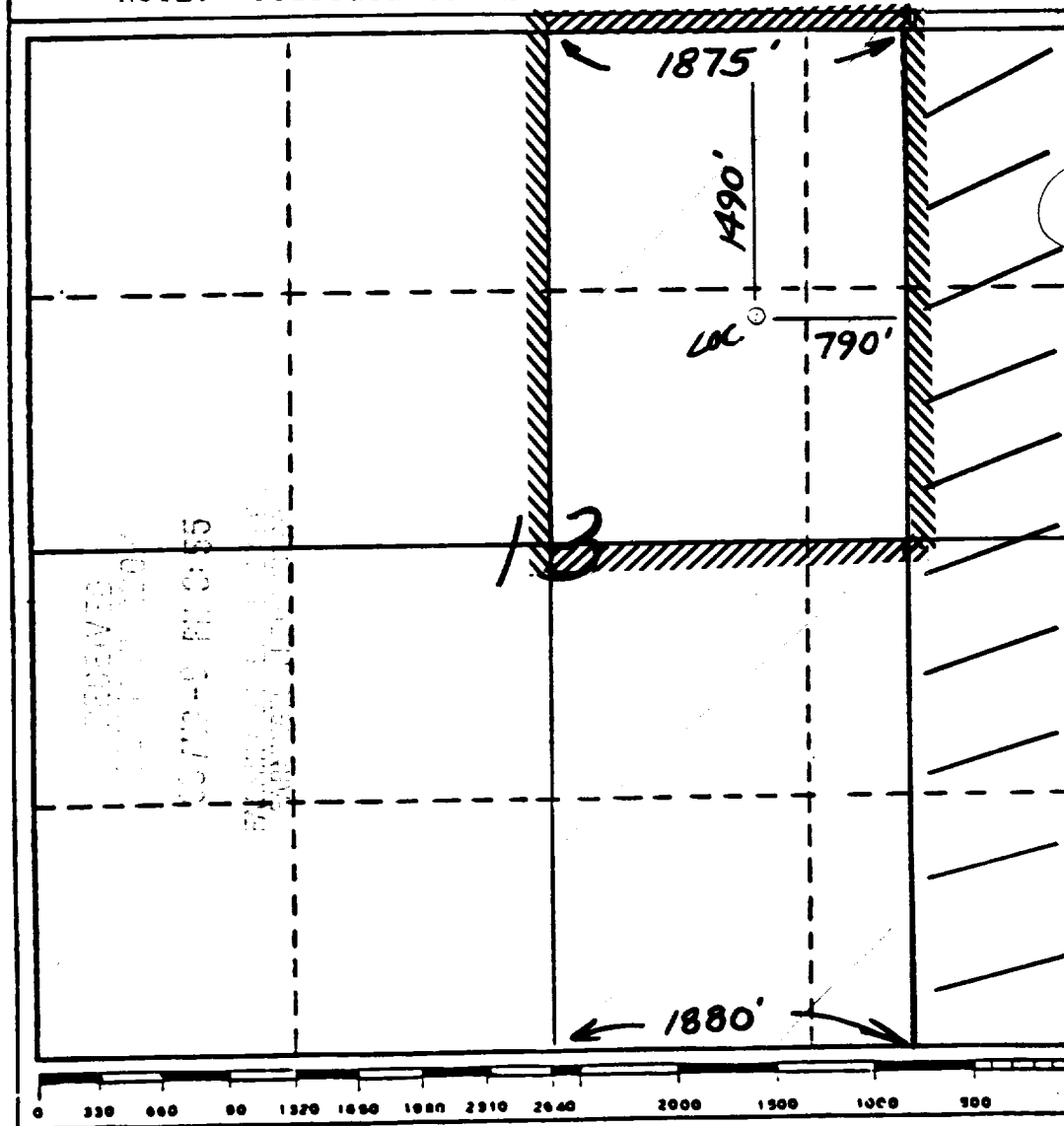
1. Outline the acreage dedicated to the subject well by colored pencil or hachure marks on the plat below.
2. If more than one lease is dedicated to the well, outline each and identify the ownership thereof (both as to working interest and royalty).
3. If more than one lease of different ownership is dedicated to the well, have the interests of all owners been consolidated by communitization, unitization, force-pooling, etc?

☒ Yes ☐ No If answer is "yes," type of consolidation unitization

If answer is "no," list the owners and tract descriptions which have actually been consolidated. (Use reverse side of this form if necessary.)

No allowable will be assigned to the well until all interests have been consolidated (by communitization, unitization, forced-pooling, or otherwise) or until a non-standard unit, eliminating such interests, has been approved by the Division

NOTE: reissued to show moved location.



CERTIFICATION

I hereby certify that the information contained herein is true and complete to the best of my knowledge and belief.

Neale C. Edwards

Name
Regulatory Affairs

Position
El Paso Natural Gas

Company
El Paso

Date
8-8-88

I hereby certify that the location shown on this plat is plotted from field notes of actual surveys made by me or under my supervision, and the same is true and correct to the best of my knowledge and belief.

Neale C. Edwards

Date Surveyed
7-19-88

Registered Professional Engineer and/or Land Surveyor

Neale C. Edwards

Certificate No.
6857