

STATE OF NEW MEXICO  
ENERGY AND MINERALS DEPARTMENT

OIL CONSERVATION DIVISION

P. O. BOX 2088

SANTA FE, NEW MEXICO 87501

Form C-101  
Revised 10-1-70

|                        |  |
|------------------------|--|
| NO. OF COPIES RECEIVED |  |
| DISTRIBUTION           |  |
| SANTA FE               |  |
| FILE                   |  |
| U.S.O.S.               |  |
| LAND OFFICE            |  |
| OPERATOR               |  |

5A. Indicate Type of Lease  
STATE ☐ REC ☒

5. State Oil & Gas Lease No.

APPLICATION FOR PERMIT TO DRILL, DEEPEN, OR PLUG BACK

|                                                                                                                                                                                                         |  |                                                                                                                                                                                                      |                                     |
|---------------------------------------------------------------------------------------------------------------------------------------------------------------------------------------------------------|--|------------------------------------------------------------------------------------------------------------------------------------------------------------------------------------------------------|-------------------------------------|
| 1a. Type of Work                                                                                                                                                                                        |  | DRILL <input checked="" type="checkbox"/> DEEPEN <input type="checkbox"/> PLUG BACK <input type="checkbox"/>                                                                                         |                                     |
| b. Type of Well                                                                                                                                                                                         |  | OIL WELL <input type="checkbox"/> GAS WELL <input checked="" type="checkbox"/> OTHER <input type="checkbox"/> SINGLE ZONE <input checked="" type="checkbox"/> MULTIPLE ZONE <input type="checkbox"/> |                                     |
| 2. Name of Operator<br>Blackwood & Nichols Co., Ltd. 2505                                                                                                                                               |  |                                                                                                                                                                                                      |                                     |
| 3. Address of Operator<br>P. O. Box 1237, Durango, CO 81302-1237                                                                                                                                        |  |                                                                                                                                                                                                      |                                     |
| 4. Location of Well<br>UNIT LETTER <u>K</u> LOCATED <u>1380</u> FEET FROM THE <u>South</u> LINE<br>AND <u>1850</u> FEET FROM THE <u>West</u> LINE OF SEC. <u>8</u> TWP. <u>30N</u> RGE. <u>7W</u> NEBUE |  |                                                                                                                                                                                                      |                                     |
| 11. Elevation (Show whether D.F., R.I., etc.)<br>6130' U.G.                                                                                                                                             |  | 21A. Kind & Status Plug. Bond                                                                                                                                                                        | 21B. Drilling Contractor<br>Unknown |
| 19. Proposed Depth<br>3040'                                                                                                                                                                             |  | 19A. Formation<br>Fruitland Coal                                                                                                                                                                     | 20. Rotary or C.T.<br>Rotary        |
| 22. Approx. Date Work will start<br>November 15, 1988                                                                                                                                                   |  |                                                                                                                                                                                                      |                                     |

23.

PROPOSED CASING AND CEMENT PROGRAM

| SIZE OF HOLE | SIZE OF CASING | WEIGHT PER FOOT | SETTING DEPTH | SACKS OF CEMENT | EST. TOP  |
|--------------|----------------|-----------------|---------------|-----------------|-----------|
| 12 1/4"      | 9 5/8"         | 36.0# K-55      | 300'          | 200 sxs.        | Circulate |
| 8 3/4"       | 7"             | 23.0# K-55      | 2930 - 2830   | (A)             | Circulate |
| 6 1/4"       | 5 1/2" liner   | 17.0# N-80      | 2830 - 3040'  | None            |           |

(A) 450 sacks Howco lite plus  
100 sacks Neat

Blackwood & Nichols proposes to drill a Fruitland Coal well to further develop the Northeast Blanco Unit. Seven inch casing will be top set above the coal zones using a low solids mud with sufficient weight for well control. Then an uncemented 5 1/2" liner will be set through the Fruitland Coal zones. Well control will be a 10" series 900 BOP, rotating head, and sufficient kill and bleed liner.

Attached you will find:

1. C-102
2. Proposed Access Map
3. Drilling Pad Layout
4. Map of Area Wells

Surface Ownership: Bureau of Reclamation

IN ABOVE SPACE DESCRIBE PROPOSED PROGRAM: IF PROPOSAL IS TO DEEPEN OR PLUG BACK, GIVE DATA ON PRESENT PRODUCTIVE ZONE AND PROPOSED NEW PRODUCTIVE ZONE. GIVE SLOWDOWN PREVENTER PROGRAM, IF ANY.

I hereby certify that the information above is true and complete to the best of my knowledge and belief.

Signed William F. Clark Title Operations Manager Date October 14, 1988  
(This space for State Use)

APPROVED BY [Signature] TITLE  DATE   
CONDITIONS OF APPROVAL, IF ANY:

**RECEIVED**  
OCT 14 1988  
OIL CONSERVATION DIVISION  
DIST. 3

**NEW MEXICO OIL CONSERVATION COMMISSION  
WELL LOCATION AND ACREAGE DEDICATION PLAT**

Form C-102  
Supersedes C-128  
Effective 1-1-65

All distances must be from the outer boundaries of the Section.

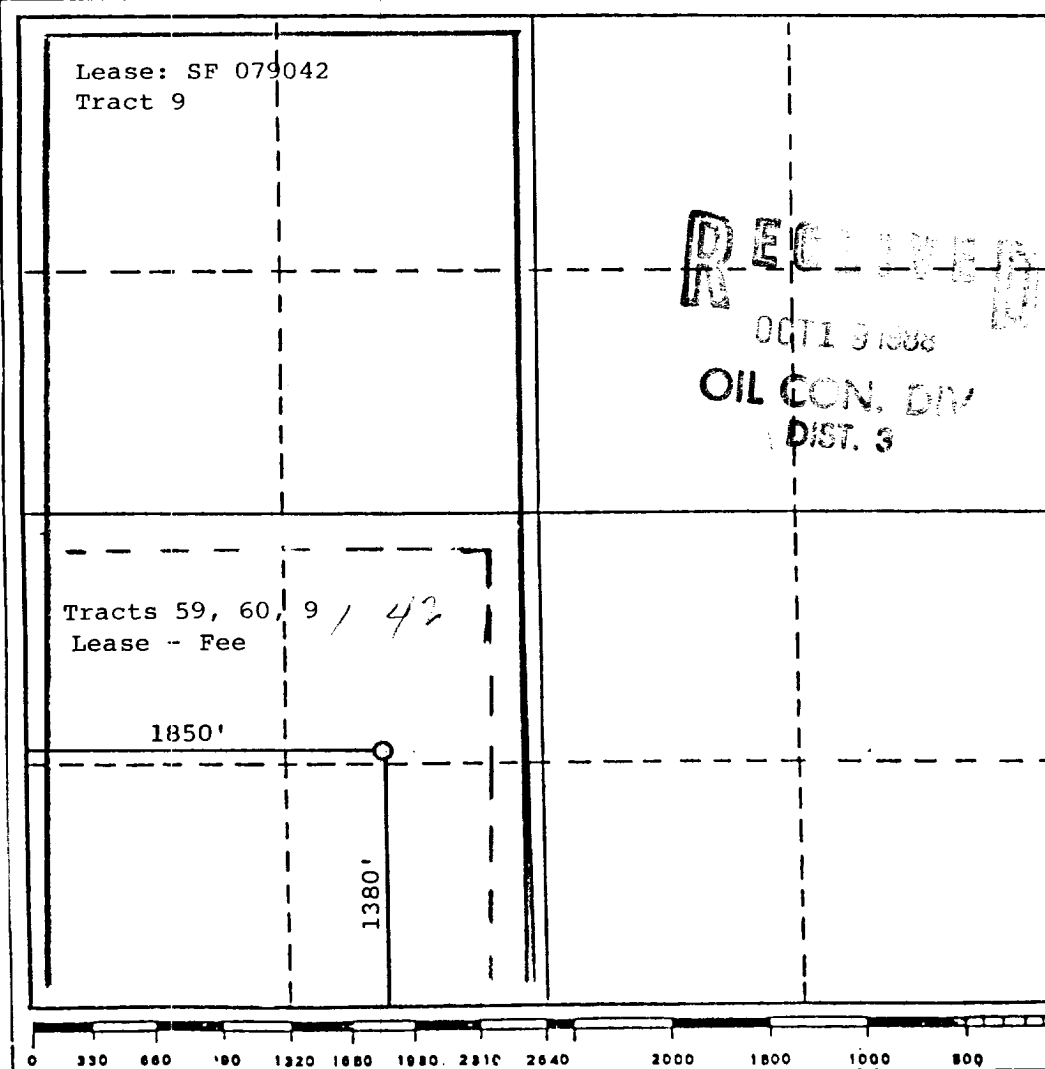
|                                                      |                                              |                                                    |                                       |                                             |                        |
|------------------------------------------------------|----------------------------------------------|----------------------------------------------------|---------------------------------------|---------------------------------------------|------------------------|
| Operator<br><b>BLACKWOOD &amp; NICHOLS CO., LTD.</b> |                                              |                                                    | Lease<br><b>NORTHEAST BLANCO UNIT</b> |                                             | Well No.<br><b>425</b> |
| Unit Letter<br><b>K</b>                              | Section<br><b>8</b>                          | Township<br><b>30 North</b>                        | Range<br><b>7W., N.M.P.M.</b>         | County<br><b>Rio Arriba</b>                 |                        |
| Actual Footage Location of Well:                     |                                              |                                                    |                                       |                                             |                        |
| <b>1380</b> feet from the <b>south</b> line and      |                                              | <b>1850</b> feet from the <b>west</b> line         |                                       |                                             |                        |
| Ground Level Elev:<br><b>6130 (U.G.)</b>             | Producing Formation<br><b>Fruitland Coal</b> | Pool<br><b>San Juan Basin<br/>Undeg. Fruitland</b> |                                       | Dedicated Acreage:<br><b>160- 320</b> Acres |                        |

1. Outline the acreage dedicated to the subject well by colored pencil or hachure marks on the plat below.
2. If more than one lease is dedicated to the well, outline each and identify the ownership thereof (both as to working interest and royalty).
3. If more than one lease of different ownership is dedicated to the well, have the interests of all owners been consolidated by communitization, unitization, force-pooling, etc?

☒ Yes    ☐ No    If answer is "yes," type of consolidation Unitization

If answer is "no," list the owners and tract descriptions which have actually been consolidated. (Use reverse side of this form if necessary.) \_\_\_\_\_

No allowable will be assigned to the well until all interests have been consolidated (by communitization, unitization, forced-pooling, or otherwise) or until a non-standard unit, eliminating such interests, has been approved by the Commission.



**CERTIFICATION**

I hereby certify that the information contained herein is true and complete to the best of my knowledge and belief.

*William F. Clark*  
Name

William F. Clark

Position

Operations Manager

Company

Blackwood & Nichols Co.

Date

October 12, 1988

Revised 10/19/88

I hereby certify that the well location shown on this plat was plotted from field notes of actual surveys made by me or under my supervision, and that the same is true and correct to the best of my knowledge and belief.

Date Surveyed

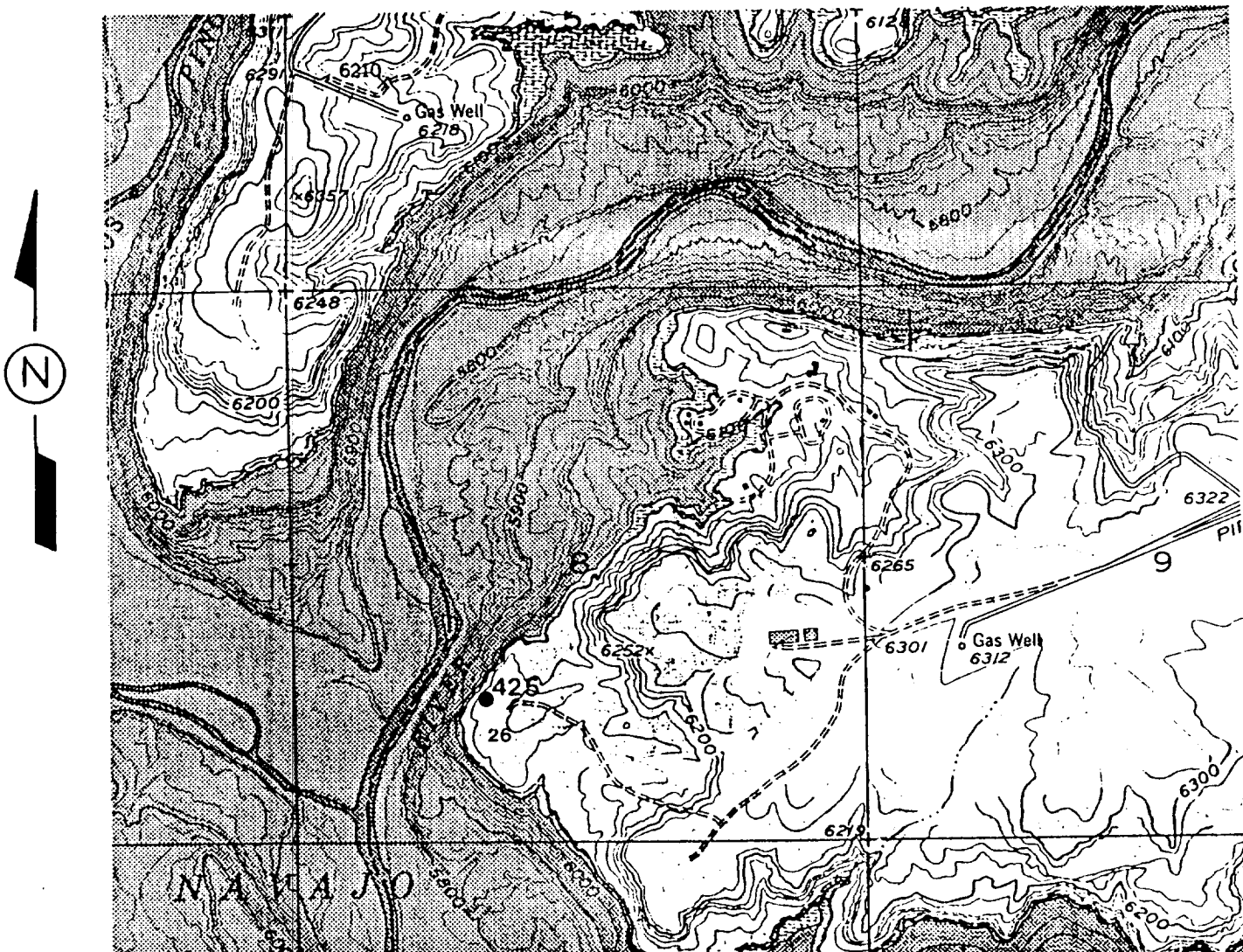
October 4, 1988

Registered Professional Engineer and/or Land Surveyor

*Allison L. Kröeger*  
Allison L. Kröeger, PLS

Certificate No.

7922



T. 30 N., R. 7 W., N.M.P.M.

Note: Realign existing road around south end of pad.

# **BLACKWOOD & NICHOLS CO., LTD.**

V I C I N I T Y   M A P  
for  
NORTHEAST BLANCO UNIT No. 425

Date: October, 1988

Scale: 1"=1562'

KROEGER & ASSOC.  
DURANGO, COLO.