

UNITED STATES
DEPARTMENT OF THE INTERIOR
GEOLOGICAL SURVEY

APPLICATION FOR PERMIT TO DRILL, DEEPEN, OR PLUG BACK

1a. TYPE OF WORK

DRILL ☒DEEPEN ☐PLUG BACK ☐

b. TYPE OF WELL

OIL
WELL ☐GAS
WELL ☒

OTHER

SINGLE
ZONE ☐MULTIPLE
ZONE ☐

2. NAME OF OPERATOR

Blackwood & Nichols Co., LEO

3. ADDRESS OF OPERATOR

P.O. Box 1237, Durango, Colorado 81302- 1237

4. LOCATION OF WELL (Report location clearly and in accordance with any State requirements.)
At surface

160' FNL - 1555' FEL

At proposed prod. zone

Same

14. DISTANCE IN MILES AND DIRECTION FROM NEAREST TOWN OR POST OFFICE*

15 miles NE of Blanco, New Mexico

10. DISTANCE FROM PROPOSED*

LOCATION TO NEAREST
PROPERTY OR LEASE LINE, FT.
(Also to nearest drlg. unit line, if any) 160'18. DISTANCE FROM PROPOSED LOCATION*
TO NEAREST WELL, DRILLING, COMPLETED,
OR APPLIED FOR, ON THIS LEASE, FT. 400'

21. ELEVATIONS (Show whether DF, RT, GR, etc.)

6257' GL

16. NO. OF ACRES IN LEASE

103.60

19. PROPOSED DEPTH

3190'

17. NO. OF ACRES ASSIGNED
TO THIS WELL.

1/320

20. ROTARY OR CABLE TOOLS

Rotary

22. APPROX. DATE WORK WILL START*

November 15, 1988

23.

PROPOSED CASING AND CEMENTING PROGRAM

This action is subject to technical and
procedural review pursuant to 43 CFR 3165.3
and appeal pursuant to 43 CFR 3165.4.

SIZE OF HOLE	SIZE OF CASING	WEIGHT PER FOOT	SETTING DEPTH	QUANTITY OF CEMENT
12 1/4"	9 5/8"	36#	300'	207 cuft to circulate
8 3/4"	7"	23#	2980'	781 cuft to circulate
6 1/4"	5 1/2"	17#	2880'-3190'	39 cuft to circulate

Propose to spud in San Jose formation. Will drill 12 1/4" surface hole to a TD of 300: Surface casing will be run and cemented with cement returns to surface. WOC 12 hours. Test to 600 psi. Drill 8 3/4" hole with fresh water mud to intermediate TD. No abnormal pressures or poisonous gases are anticipated. Casing will be run and cemented with cement returns to surface. WOC 12 hours. Test to 1500 psi. Drill 6 1/4" hole through Fruitland Coals with water. A liner may be run if hole conditions dictate. The liner may or may not be cemented, depending on the wells natural producing ability.

Surface: Bot Ree.

IN ABOVE SPACE DESCRIBE PROPOSED PROGRAM: If proposal is to deepen or plug back, give data on present productive zone and proposed new productive zone. If proposal is to drill or deepen directionally, give pertinent data on subsurface locations and measured and true vertical depths. Give blowout preventer program, if any.

24.

SIGNED

William F. Clark

TITLE Operations Manager

DATE

Oct 18, 1988

(This space for Federal or State office use)

PERMIT NO.

APPROVAL DATE

RECEIVED

APPROVED

DEC 15 1988

AS AMENDED

APPROVED BY

TITLE

OIL CON. DIV. DEC 15 1988

JAMES E. EDWARDS
AREA MANAGER

CONDITIONS OF APPROVAL, IF ANY:

NSL-2601

*See Instructions On Reverse Side

MMS-20

All distances must be from the outer boundaries of the Section.

Operator Blackwood & Nichols Co., LTD.			Lease Northeast Blanco Unit		Well No. 429
Unit Letter B	Section 17	Township 30 North	Range 7 West	County Rio Arriba	
Actual Footage Location of Wells 160 feet from the North line and 1555 feet from the East line					
Ground Level Elev. 6257*	Producing Formation Fruitland Coal		Pool Basin Fruitland Coal		Dedicated Acreage 320 Acres

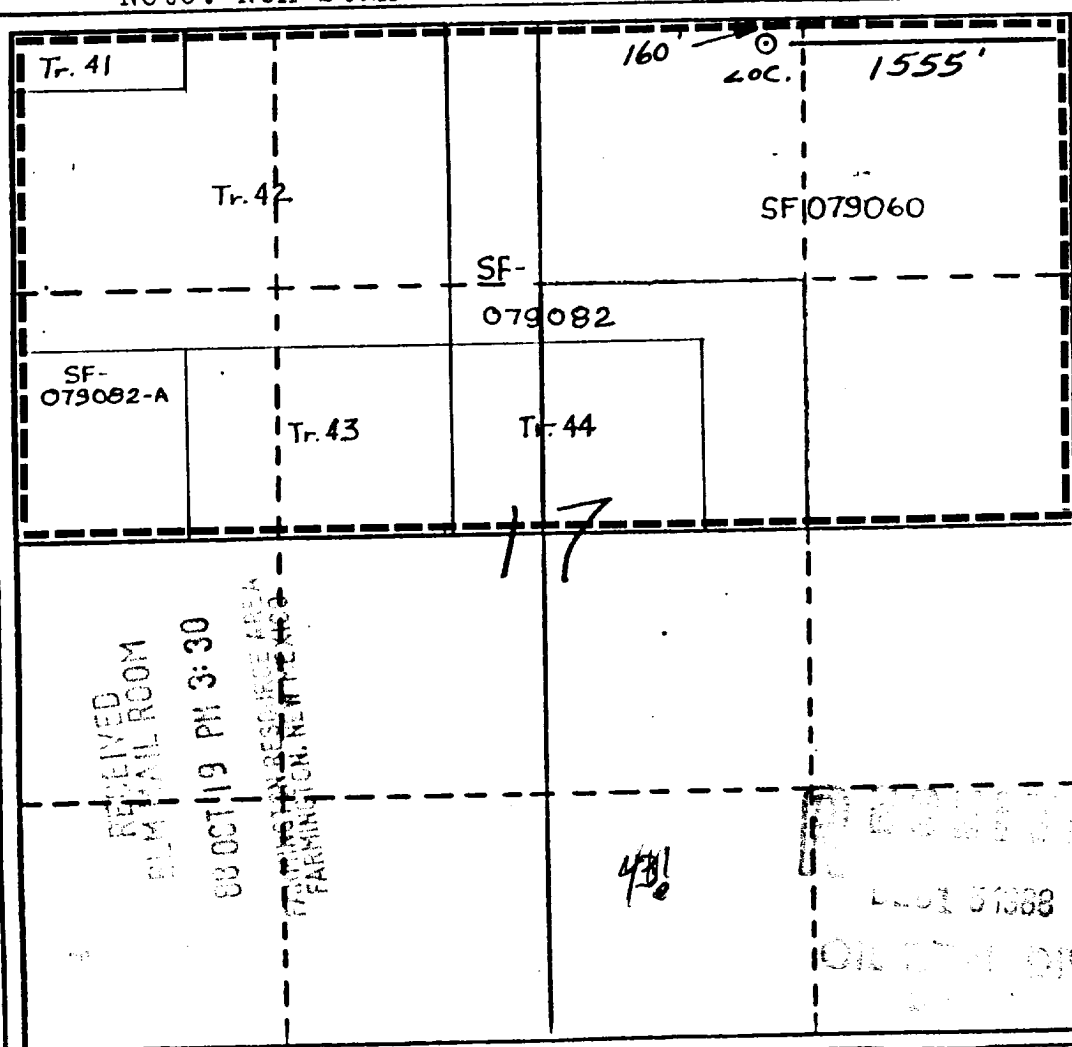
1. Outline the acreage dedicated to the subject well by colored pencil or hachure marks on the plat below.
2. If more than one lease is dedicated to the well, outline each and identify the ownership thereof (both as to working interest and royalty).
3. If more than one lease of different ownership is dedicated to the well, have the interests of all owners been consolidated by communitization, unitization, force-pooling, etc?

☒ Yes ☐ No If answer is "yes," type of consolidation Unitization

If answer is "no," list the owners and tract descriptions which have actually been consolidated. (Use reverse side of this form if necessary.)

No allowable will be assigned to the well until all interests have been consolidated (by communitization, unitization, forced-pooling, or otherwise) or until a non-standard unit, eliminating such interests, has been approved by the Division

* Note: Non-standard due to terrain.



CERTIFICATION

I hereby certify that the information contained herein is true and complete to the best of my knowledge and belief.

William F. Clark
Name

Position
Operations Manager

Company
Blackwood & Nichols Co., Ltd.

Date
Oct 18, 1988

I hereby certify that the location shown on this plat was plotted from field notes of actual survey made by me or under my supervision, and that the same is true and correct to the best of my knowledge and belief.

Neale C. Edwards
Date Surveyed

9-11-88

Registered Professional Engineer and/or Land Surveyor

Neale C. Edwards

Certificate No.

6857

Vicinity Map
Blackwood & Nichols Co., Ltd.
Northeast Blanco Unit No. 429
160' FNL - 1555' FEL
Section 17, T30N, R7W, NMPM
Rio Arriba Co., New Mexico

