

30-039-24398

Submit to Appropriate
District Office
State Lease - 6 copies
Fee Lease - 5 copies

State of New Mexico
Energy, Minerals and Natural Resources Department

Form C-101
Revised 1-1-89

OIL CONSERVATION DIVISION

DISTRICT I
P.O. Box 1980, Hobbs, NM 88240

P.O. Box 2088

Santa Fe, New Mexico 87504-2088

DISTRICT II
P.O. Drawer DD, Artesia, NM 88210

DISTRICT III
1000 Rio Brazos Rd., Aztec, NM 87410

API NO. (assigned by OCD on New Wells)

5. Indicate Type of Lease

STATE ☐

FEE ☒

6. State Oil & Gas Lease No.

Fee

7. Lease Name or Unit Agreement Name

Simms Com.

8. Well No.

5

9. Pool name or Wildcat

Basin Fruitland Coal

APPLICATION FOR PERMIT TO DRILL, DEEPEN, OR PLUG BACK

1a. Type of Work:

DRILL ☒

RE-ENTER ☐

DEEPEN ☐

PLUG BACK ☐

b. Type of Well:

OIL
WELL ☐

GAS
WELL ☒

OTHER

SINGLE
ZONE ☒

MULTIPLE
ZONE ☐

2. Name of Operator

Robert L. Bayless

3. Address of Operator

P.O. Box 168, Farmington, NM 87499

4. Well Location

Unit Letter B : 1190 Feet From The North Line and 1850 Feet From The East Line

Section 36

Township 30N

Range 4W

NMPM

Rio Arriba

County

10. Proposed Depth

4125'

11. Formation

Fruitland Coal

12. Rotary or C.T.

Rotary

13. Elevations (Show whether DF, RT, GR, etc.)

7065' GL; 7077' RKB

14. Kind & Status Plug. Bond

15. Drilling Contractor

Bayless Drilling

16. Approx. Date Work will start

ASAP

17.

PROPOSED CASING AND CEMENT PROGRAM

SIZE OF HOLE	SIZE OF CASING	WEIGHT PER FOOT	SETTING DEPTH	SACKS OF CEMENT	EST. TOP
12 1/4"	8 5/8"	24.0#	125'	120/142 ft ³	surface
7 7/8"	4 1/2"	10.5#	4125'	250/315 ft ³	3000' RKB
			(filler cement)	150/309 ft ³	2000' RKB

Will drill 12-1/4" hole to 125' and set 125' of 8-5/8" 24.0#/ft J-55 casing, cementing with 142 ft³ Class B cement, circulated to surface. Will drill 7-7/8" hole to 4125' and run Induction and Density logs to evaluate the Fruitland Coal in this well. If Fruitland appears productive, will run 4125' of 4-1/2" 10.5#/ft J-55 casing and cement with 309 ft³ of Class B cement w/2% Econolite, tailed by 315 ft³ 50/50 pozmix w/2% gel and 10% salt. If Fruitland does not appear productive, will evaluate Pictured Cliffs formation. Circulating medium will be clear water, natural mud and water loss control additives. No abnormal pressures or temperatures are anticipated. Blowout preventer schematic is attached. The gas from this formation is not dedicated to a gas contract.

ESTIMATED TOPS: Ojo Alamo - 3205'

Pictured Cliffs - 3728'

Kirtland - 3405'

Lower P.C. - 3951'

Fruitland - 3605'

Total Depth - 4125'

IN ABOVE SPACE DESCRIBE PROPOSED PROGRAM: IF PROPOSAL IS TO DEEPEN OR PLUG BACK, GIVE DATA ON PRESENT PRODUCTIVE ZONE AND RECORD NEW PRODUCTIVE ZONE. GIVE BLOWOUT PREVENTER PROGRAM, IF ANY.

I hereby certify that the information above is true and complete to the best of my knowledge and belief.

SIGNATURE

Kevin H. McCord

TITLE

Petroleum Engineer

DATE

4/27/89

TYPE OR PRINT NAME

Kevin H. McCord

TELEPHONE NO. 505/326-2659

(This space for State Use)

APPROVED BY

Sam B. Burch

DEPUTY OIL & GAS INSPECTOR, DIST. #3

TITLE

DATE

MAY 01 1989

CONDITIONS OF APPROVAL, IF ANY:

APPROVAL EXPIRES 11-1-89
UNLESS DRILLING IS COMMENCED.
SPUD NOTICE MUST BE SUBMITTED
WITHIN 10 DAYS.

Submit to Appropriate
District Office
State Lease - 4 copies
Fee Lease - 3 copies

State of New Mexico
Energy, Minerals and Natural Resources Department

Form C-102
Revised 1-1-89

OIL CONSERVATION DIVISION

P.O. Box 2088
Santa Fe, New Mexico 87504-2088

DISTRICT I
P.O. Box 1980, Hobbs, NM 88240

DISTRICT II
P.O. Drawer DD, Artesia, NM 88210

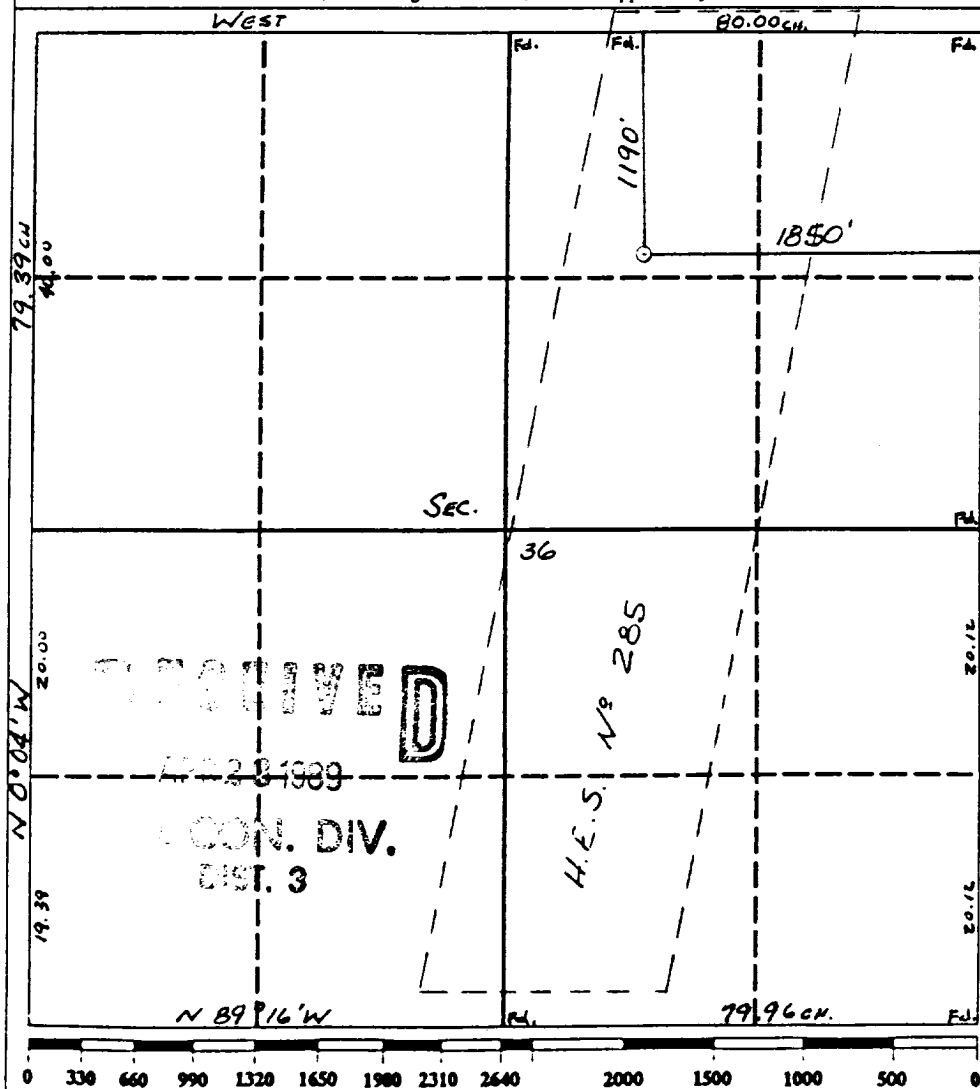
DISTRICT III
1000 Rio Brazos Rd., Aztec, NM 87410

WELL LOCATION AND ACREAGE DEDICATION PLAT

All Distances must be from the outer boundaries of the section

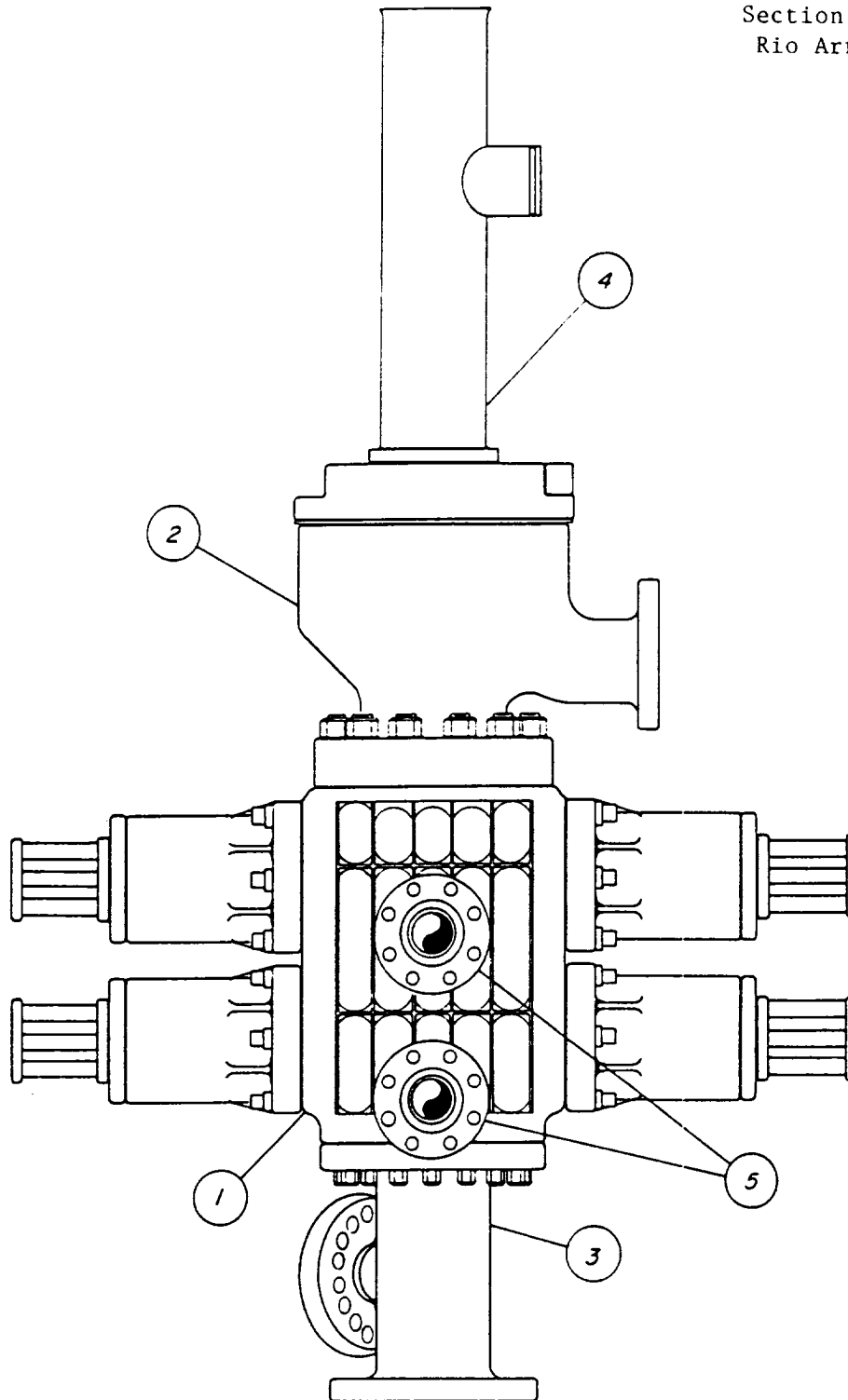
Operator ROBERT L. BAYLESS			Lease SIMMS		Well No. 5
Unit Letter B	Section 36	Township 30 N	Range 4 W	County Rio Arriba	
Actual Footage Location of Well: 1190 feet from the North line and 1850 feet from the East line					
Ground level Elev. 7065	Producing Formation Fruitland Coal		Pool Basin Fruitland Coal	Dedicated Acreage 320 Acres	

- Outline the acreage dedicated to the subject well by colored pencil or hatchure marks on the plat below.
- If more than one lease is dedicated to the well, outline each and identify the ownership thereof (both as to working interest and royalty).
- If more than one lease of different ownership is dedicated to the well, have the interest of all owners been consolidated by communitization, unitization, force-pooling, etc?
☐ Yes ☐ No If answer is "yes" type of consolidation _____
If answer is "no" list the owners and tract descriptions which have actually been consolidated. (Use reverse side of this form if necessary.) _____
No allowable will be assigned to the well until all interests have been consolidated (by communitization, unitization, forced-pooling, or otherwise) or until a non-standard unit, eliminating such interest, has been approved by the Division.



OPERATOR CERTIFICATION I hereby certify that the information contained herein is true and complete to the best of my knowledge and belief.	
Signature	<i>Kevin H. McCord</i>
Printed Name	Kevin H. McCord
Position	Petroleum Engineer
Company	Robert L. Bayless
Date	4/27/89
SURVEYOR CERTIFICATION I hereby certify that the well location shown on this plat was plotted from field notes of actual surveys made by me or under my supervision, and that the same is true and correct to the best of my knowledge and belief.	
Date Surveyed	4-14-89
Signature	<i>William F. Mahoney II</i>
Professional Surveyor	William F. Mahoney II
Certificate No. 8466	

ROBERT L. BAYLESS
SIMMS 5
1190' FNL & 1850' FEL
Section 36, T30N, R4W
Rio Arriba Co., NM



- ① SHAFFER 11" 3000 LB MODEL LWS MANUAL LOCK RAM BLOWOUT PREVENTER
- ② GRANT 11" 3000 LB ROTATING DRILL HEAD
- ③ 11" SPOOL
- ④ 11" FLOW NIPPLE
- ⑤ 4" 3000 LB. NOZZLE

ROBERT L. BAYLESS
SIMMS 5
1190'FNL & 1850'FEL
Sec.36, T30N, R4W
Rio Arriba Co., N.M.

