

UNITED STATES
DEPARTMENT OF THE INTERIOR
BUREAU OF LAND MANAGEMENT

RECEIVED
MAIL ROOM

APPLICATION FOR PERMIT TO DRILL, DEEPEN, OR PLUG BACK

1a. TYPE OF WORK DRILL	5. LEASE NUMBER NM-012735
1b. TYPE OF WELL GAS	6. IF INDIAN, ALL. OR TRIBE NAME
2. OPERATOR MERIDIAN OIL INC. OK	7. UNIT AGREEMENT NAME SAN JUAN 31-6 UNIT
3. ADDRESS & PHONE NO. OF OPERATOR P O BOX 4289 FARMINGTON, NM 87499	8. FARM OR LEASE NAME SAN JUAN 31-6 UNIT
4. LOCATION OF WELL 1765'S 1485'W	9. WELL NO. 208
14. DISTANCE IN MILES FROM NEAREST TOWN 18 MILES FROM GOVERNADOR	10. FIELD, POOL, OR WILDCAT BASIN FRUITLAND COAL
15. DISTANCE FROM PROPOSED LOCATION 1485' TO NEAREST PROPERTY OR LEASE LINE.	11. SEC. T. R. M OR BLK. K SEC. 6 T30N R06W NMPM
16. ACRES IN LEASE 639.40	12. COUNTY RIO ARRIBA
17. ACRES ASSIGNED TO WELL 319.85	13. STATE NM
18. DISTANCE FROM PROPOSED LOCATION TO NEAREST WELL DR. 30' COMPL., OR APPLIED FOR ON THIS LEASE.	20. ROTARY OR CABLE TOOLS ROTARY
21. ELEVATIONS (DF, FT, GR, ETC.) 6304'GL	22. APPROX. DATE WORK WILL START
23. PROPOSED CASING AND CEMENTING PROGRAM	

*SEE OPERATIONS PLAN

This action is subject to technical and
procedural review pursuant to 43 CFR 3165.3
and appeal pursuant to 43 CFR 3165.4.

24. AUTHORIZED BY: *[Signature]*
REGULATORY AFFAIRS

5-2-89
DATE

PERMIT NO. _____ APPROVAL DATE _____

APPROVED BY _____ TITLE _____ DATE _____

APPROVED *[Signature]*
AS AMENDED

NOTE: THIS FORMAT IS ISSUED IN LIEU OF US BLM FORM 3160-3.

MAY 11 1989
[Signature]
AREA MANAGER

Well Name: 208 SAN JUAN 31-6 UNIT
 Sec. 6 T30N R06W
 BASIN FRUITLAND COAL

1765'S 1485'W
 RIO ARRIBA NEW MEXICO
 Elevation 6304'GL

Formation tops: Surface- SAN JOSE
 Ojo Alamo- 2185
 Kirtland- 2370
 Fruitland- 2955
 Fruitland Coal Top- 2985
 Fruitland Coal Base- 3110
 Intermediate TD- 2965
 Total Depth- 3110
 Pictured Cliffs- 3120

Logging Program: Mud logs from intermediate to total depth.

Mud Program:	Interval	Type	Weight	Visc.	Fl. Loss
	0 - 200	Spud	8.4 - 8.9	40-50	no control
	200 - 2965	Non-dispersed	8.4 - 9.1	30-60	no control
	2965 - 3110	Formation Water	8.4		no control

Casing Program:	Hole Size	Depth Interval	Csg. Size	Weight	Grade
	12 1/4"	0 - 200	9 5/8"	32.3#	H-40
	8 3/4"	0 - 2965	7"	20.0#	K-55
	6 1/4"	2915 - 3110	5 1/2"	15.5#	K-55
Tubing Program:		0 - 3110	2 7/8"	6.5#	J-55

Float Equipment: 9 5/8" surface casing - saw tooth guide shoe.

7" intermediate casing - guide shoe and self-fill insert float valve. Three centralizers run every other joint above shoe. Run insert float one joint above the guide shoe.

5 1/2" production casing - float shoe on bottom and a pre-drilled liner run to the 7" casing with a minimum 50' overlap. Liner hanger is a double slip grip type.

Wellhead Equipment: 9 5/8" x 7" x 2 7/8" x 11" 3000 psi xmas tree assembly.

Cementing:

9 5/8" surface casing - cement with 106 sacks of class "B" cement with 1/4# flocele/sack and 3% calcium chloride (125 cu ft. of slurry, 100% excess to circulate to surface). WOC 12 hours. Test casing to 600 psi for 30 minutes.

7" intermediate casing - lead with 60 sacks of 65/35 class "B" poz with 6% gel, 2% calcium chloride and 1/2 cu.ft. Perlite/sack (10.3 gallons of water/sack) tail with 100 sacks of class "B" with 2% calcium chloride. 234 lu ft. of slurry, 100% excess to cover the Ojo Alamo. Run temperature survey at 8 hours. WOC 12 hours. Test casing to 1500 psi for 30 minutes.

5 1/2" liner - do not cement.

OIL CONSERVATION DIVISION

STATE OF NEW MEXICO
ENERGY AND MINERALS DEPARTMENTP. O. BOX 2088
SANTA FE, NEW MEXICO 87501Form C-102
Revised 10-1

All distances must be from the outer boundaries of the Section.

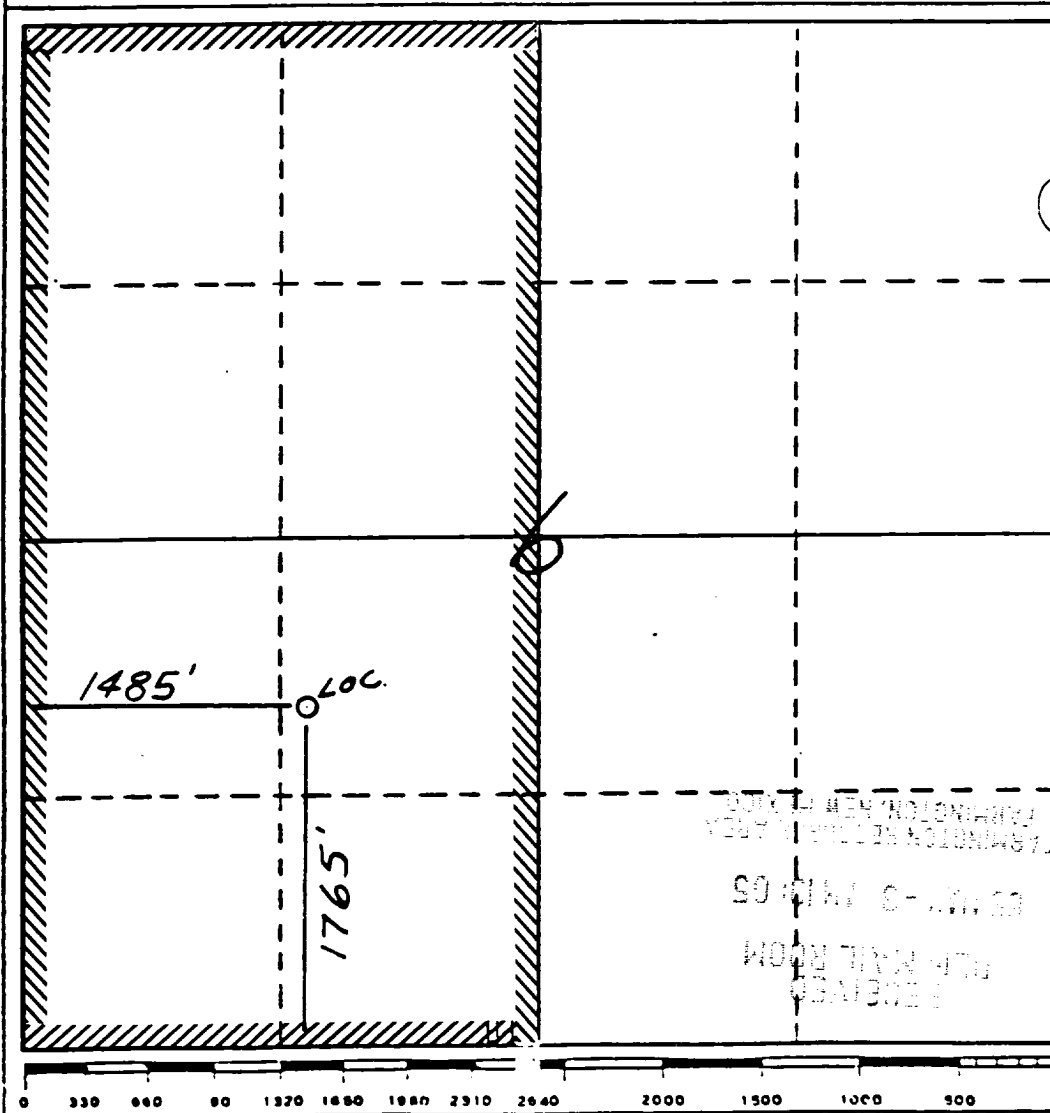
Operator Meridian Oil Inc.			Lease San Juan 31-6 Unit (NM-012735)		Well No. 208
Unit Letter K	Section 6	Township 30 North	Range 6 West	County Rio Arriba	
Actual Footage Location of Wells 1765 feet from the South line and 1485 feet from the West line					
Ground Level Elev. 6304	Producing Formation Fruitland Coal		Pool Basin		Dedicated Acreage: 319.85 Ac

1. Outline the acreage dedicated to the subject well by colored pencil or hachure marks on the plat below.
2. If more than one lease is dedicated to the well, outline each and identify the ownership thereof (both as to work interest and royalty).
3. If more than one lease of different ownership is dedicated to the well, have the interests of all owners been consolidated by communitization, unitization, force-pooling, etc?

☒ Yes ☐ No If answer is "yes," type of consolidation Unitization

If answer is "no," list the owners and tract descriptions which have actually been consolidated. (Use reverse side this form if necessary.)

No allowable will be assigned to the well until all interests have been consolidated (by communitization, unitization, forced-pooling, or otherwise) or until a non-standard unit, eliminating such interests, has been approved by the Division.



CERTIFICATION

I hereby certify that the information contained herein is true and complete to best of my knowledge and belief.

Neale C. Edwards
Name
Regulatory Affairs

Position
Meridian Oil Inc.

Company
5-2-89

Date

I hereby certify that the location shown on this plat was plotted from the notes of actual surveys made by me under supervision, and that the same is true and correct to the best of my knowledge.

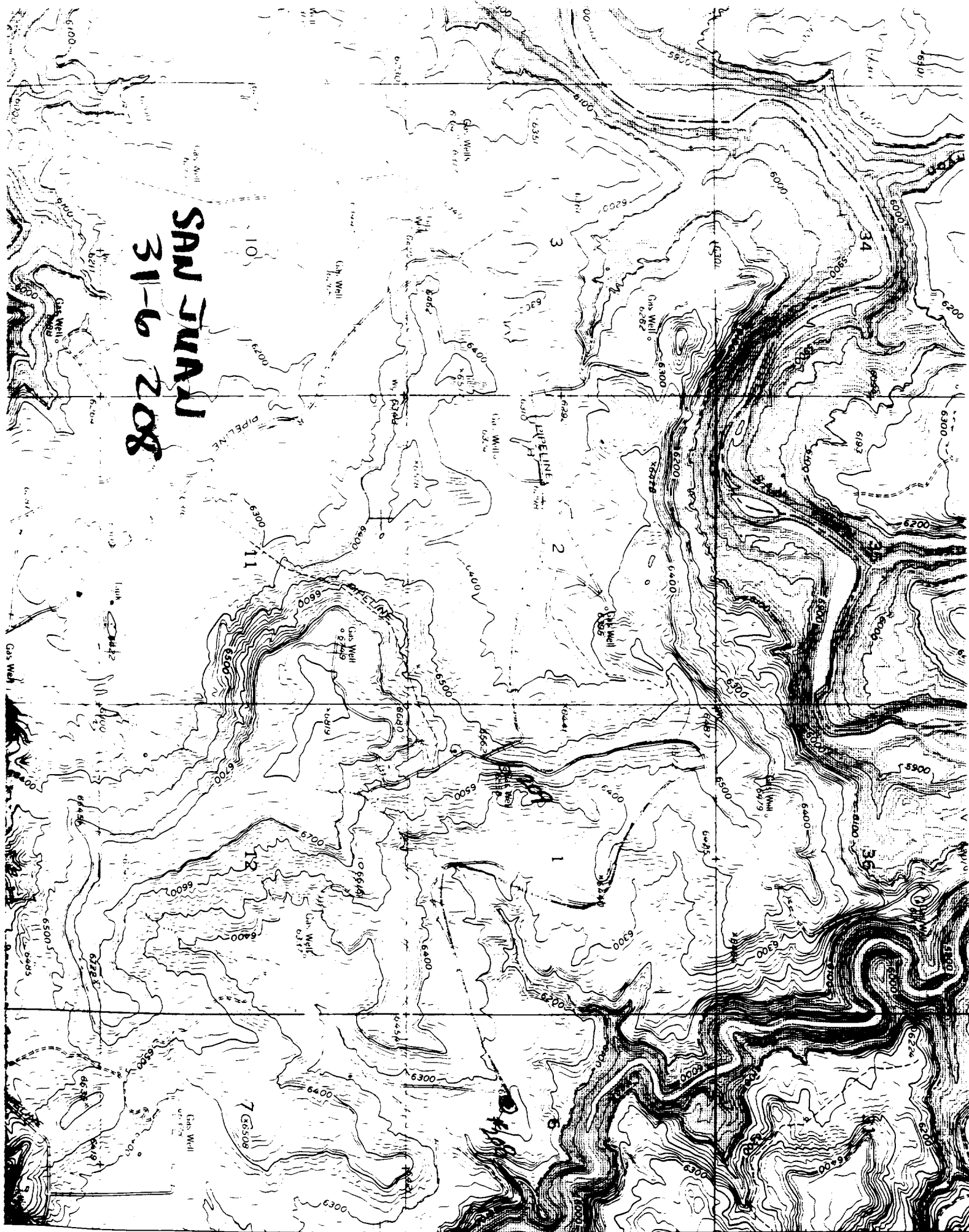
Neale C. Edwards
Date Surveyed
11-23-88

Registered Professional Engineer
and/or Land Surveyor

Neale C. Edwards

Certificate No.
6857

SAN JUAN
31-6 208



4078

4079

50

11

4080

(CONT)

21301

1 30

1 31 P

4081

4082

UNITED STATES
DEPARTMENT OF THE INTERIOR
BUREAU OF LAND MANAGEMENT

SUNDRY NOTICES AND REPORTS ON WELLS

1. TYPE OF WELL GAS	5. LEASE NUMBER NM-012735
2. OPERATOR MERIDIAN OIL INC.	6. IF INDIAN, ALL. OR TRIBE NAME
3. ADDRESS & PHONE NO. OF OPERATOR P O BOX 4289 FARMINGTON, NM 87499	7. UNIT AGREEMENT NAME SAN JUAN 31-6 UNIT
4. LOCATION OF WELL 1765'S 1485'W	8. FARM OR LEASE NAME SAN JUAN 31-6 UNIT
	9. WELL NO. 208
14. PERMIT NO.	15. ELEVATIONS 6304'GL
	10. FIELD, POOL, OR WILDCAT BASIN FRUITLAND COAL
	11. SEC. T. R. M OR BLK. SEC. 6 T30N R06W NMPM
	12. COUNTY RIO ARRIBA
	13. STATE NM

16. SUBSEQUENT REPORT OF: SPUD

17. Describe proposed or completed operations

SPUD DATE: 051789 SPUD TIME: 1415

TD 420' Ran 9 jts of 9 5/8" 36.0# K-55 casing, 400' set @ 412'
Cemented with 300 sacks of Class B cement with 1/4#
Flocele/sack and 3% calcium chloride, (354 cu ft.).
Circulated 40 bbl to surface. WOC 12 hours.
Pressure tested to 600 psi for 30 minutes. Held OK.

18. AUTHORIZED BY:

[Signature]
REGULATORY AFFAIRS

RECEIVED
MAY 20 1989

OIL CON. DIV

5-22-89
DATE

NOTE: THIS FORMAT IS ISSUED IN LIEU OF US BLM FORM 3160-5.

===== ACCEPTED FOR RECORD =====
(This space for Federal or State office use)

APPROVED BY _____
CONDITION OF APPROVAL, IF ANY:

TITLE _____

DATE

MAY 25 1989
FARMINGTON RESOURCE AREA

BY *[Signature]*

NMOCD